



# ANNUAL COMMUNITY CONSULTATION REPORT

for

EXPLORATION LICENCE NO. 9399 (*Mining Act, 1992*)

<b>Project Name</b>	<b>Wilpinjong Coal Mine</b>
<b>Location</b>	<b>1434 Ulan – Wollar Road, Wilpinjong NSW 2850</b>
<b>Operator</b>	<b>Wilpinjong Coal Propriety Limited</b>
<b>EL Grant Date</b>	<b>3 May 2022</b>
<b>EL Expiry Date</b>	<b>3 May 2028</b>
<b>Reporting Period</b>	<b>3 May 2023 - 2 May 2024</b>

**Compiled by: Kieren Bennetts**

*Environment & Community Manager - Wilpinjong Coal Mine*

Phone: +61(0)488 103 807

Email: [kbennetts@peabodyenergy.com](mailto:kbennetts@peabodyenergy.com)

1 July 2024

## LIST OF CONTENTS

---

1.0	INTRODUCTION .....	4
2.0	CONSULTATION UNDERTAKEN .....	6
2.1	Agency Consultation.....	6
2.1.1	NSW Resources Regulator .....	6
2.2	Community Consultation Committee (CCC).....	8
2.3	Mid-Western Regional Council .....	11
2.4	Registered Aboriginal Parties Consultative Committee.....	11
2.5	Cultural Heritage Liaison Sub-Committee .....	11
2.6	Landholder Communication .....	12
2.7	'Have a Chat' - informal meetings.....	12
3.0	OUTCOMES OF CONSULTATION .....	14
3.1	Proposed Future Consultation .....	15
4.0	ENQUIRIES & COMPLAINTS .....	16

## LIST OF TABLES

---

Table 1:	Exploration Information provided to WCPL CCC.....	9
Table 2 -	Exploration specific consultation .....	12

## LIST OF FIGURES

---

Figure 1 :	EL 9399 boundaries and land ownership.....	5
Figure 2 :	WCPL EL 9399 proposed exploration activities.....	7

## EXECUTIVE SUMMARY

---

The Wilpinjong Coal Mine (the Mine) is owned by Wilpinjong Coal Pty Limited (WCPL), a wholly-owned subsidiary of Peabody Energy Australia Pty Ltd (Peabody). The Mine is located approximately 40 kilometres north-east of Mudgee, near the Village of Wollar, within the Mid-Western Regional Local Government Area, in central New South Wales.

Exploration Licence (EL) 9399 was originally granted on 3 May 2022 for a term of six years expiring on 3 May 2028

As per the Community Consultation Condition of the licence, an annual report detailing consultation undertaken during the reporting period is made publicly available within 2 calendar months of the anniversary of the grant of the prospecting title by publishing it online on the titleholder's online platform or providing a copy on request within 14 days after the request is made.

This report provides a summary of the community consultation undertaken as per WCPL's Community Consultation Strategy for EL 9399 and in line with the *Guideline for Exploration code of practice: Community Consultation Version 2.1 (May 2023)*, for the reporting period 3 May 2023 to 2 May 2024. Key consultation undertaken during the reporting period includes:

- Face to face meeting with the Senior Inspector Environment & Inspector Environment NSW Resources Regulator, Wilpinjong NSW, 4 August 2023.
- Wilpinjong Coal Mine Community Consultative Committee (CCC) meeting updates relating to the current and future drilling program.
- Aboriginal consultation via the Registered Aboriginal Parties Consultation Committee (RAPCC) and Cultural Heritage Liaison Sub-Committee (CHLSC).
- Monthly informal 'Have a Chat' community consultation (face to face 'drop-in' sessions).

During the reporting period, key stakeholders and the broader community were informed about current and future exploration activities, including:

- Exploration Applications
- Approval status
- Planned drilling program
- Location of drill rigs
- Timing of works,
- COVID and weather-related impacts
- Rehabilitation works

No issues of concern or complaints relating to exploration and/or drilling activities were received by the Wilpinjong Coal Environment and Community department during the reporting period.

## 1.0 INTRODUCTION

---

The Wilpinjong Coal Mine (the Mine) is owned by Wilpinjong Coal Pty Limited (WCPL), a wholly-owned subsidiary of Peabody Energy Australia Pty Ltd (Peabody). The Mine is an existing open cut coal mine situated approximately 40 kilometres north-east of Mudgee, near the Village of Wollar, within the Mid-Western Regional Local Government Area, in central New South Wales. The mine produces thermal coal products which are transported by rail to domestic customers for use in electricity generation and to the Port of Newcastle for export. Open cut mining operations and associated mobile equipment movements are undertaken 24 hours per day, seven days a week.

Project Approval (05-0021) was granted by then Minister for Planning under Part 3A of the *NSW Environmental Planning and Assessment Act, 1979* on 1 February 2006, following submission of the Wilpinjong Coal Project Environmental Impact Statement in May 2005. Since the original approval was granted, this Project Approval has been modified six times. Mining Lease (ML) 1573 was subsequently granted by the Minister for Primary Industries, on 8 February 2006.

The then Minister for Mineral for Regional New South Wales granted Exploration Licence (EL) 9399 to WCPL under the NSW Mining Act, on 3 May 2022, with an initial expiry date of 3 May 2028.

On 8 January 2016, Wilpinjong Coal submitted an Environmental Impact Statement (EIS) for the Wilpinjong Extension Project (WEP) to the NSW DPE. The EIS was prepared to accompany a Development Application made for the WEP as a State Significant Development (SSD), in accordance with Part 4 of the *NSW Environmental Planning and Assessment Act, 1979*. On 24 April 2017, the NSW Planning Assessment Commission, granted approval, subject to the conditions of consent to SSD 6764. PA (05-0021) is currently in the process of being surrendered. WCPL is therefore operating in accordance with SSD 6764. Mining Lease (ML) 1779 was granted by the Minister for Resources, on 20 December 2018 and Mining Lease (ML) 1795 was granted by the Minister Administering the Mining Act 1992, on 27 September 2019. ML 1846 was granted by the Minister for Regional NSW, on 28 February 2023. Please refer to **Figure 1** for further detail.

Condition 3 of EL 9399 states – *‘The licence holder must carry out community consultation in relation to the planning and conduct of activities under this licence in accordance with the Exploration Code of Practice: Community Consultation (March 2016).’* As per the Code of Practice, *an annual report on Community Consultation must be made publicly available within 2 calendar months of the anniversary of the grant of the prospecting title by publishing it online on the titleholder’s online platform or providing a copy on request within 14 days after the request is made.* Therefore, this report details the relevant community consultation undertaken from 3 May 2023 to 2 May 2024.

**Figure 1** illustrates the areas subject to the relevant mining leases, together with land ownership details. More detailed information regarding land ownership in the Village of Wollar is available upon request. Since its acquisition of the Wilpinjong Coal Mine in 2006, Peabody Energy has also acquired a range of adjacent rural properties and lands to the east and south-east of the mine. As shown, the major landowner of the areas subject to this EL is Peabody Energy.

# WILPINJONG COAL MINE COMMUNITY CONSULTATION REPORT

EL 9399: 3 May 2023 - 2 May 2024

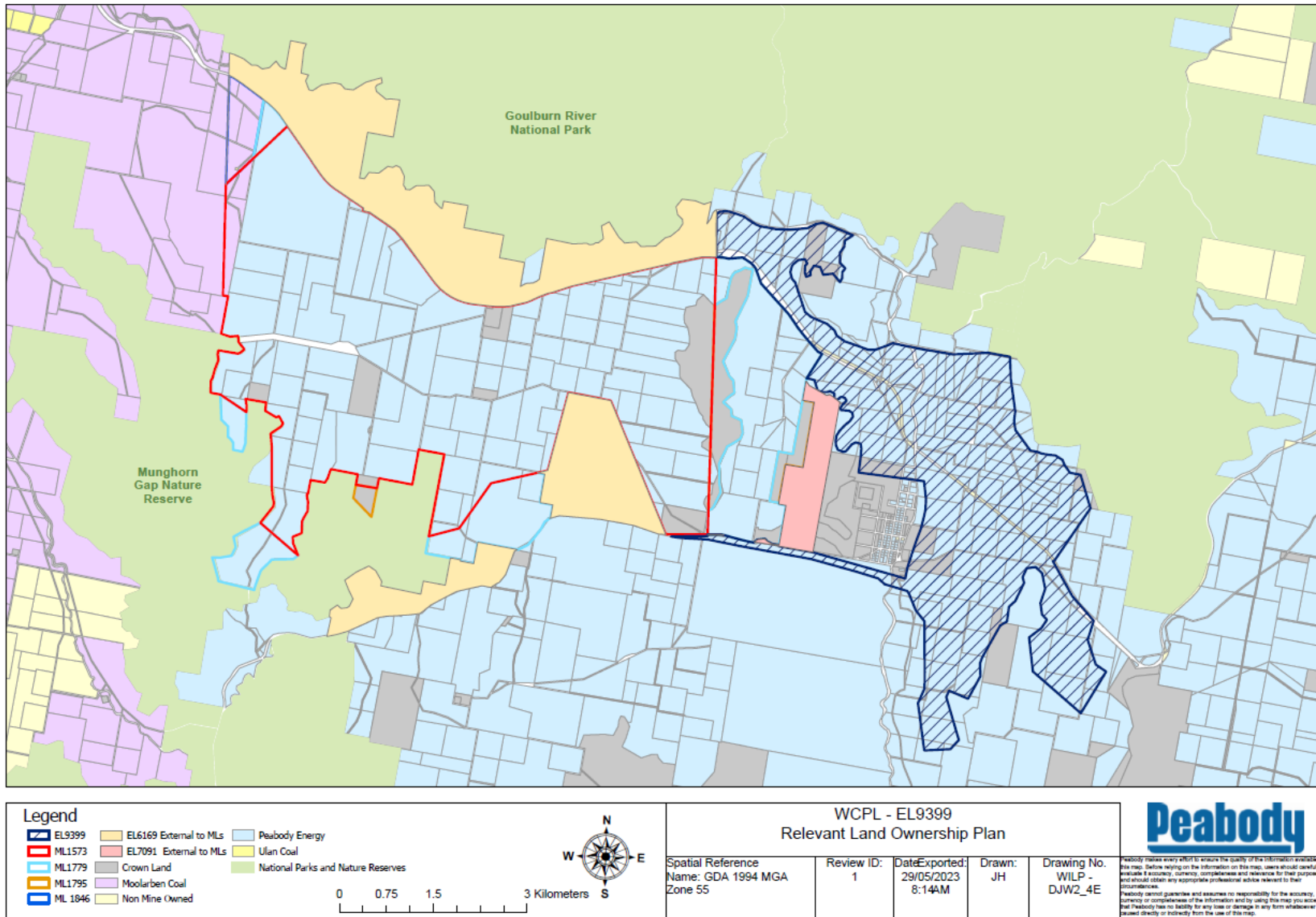


Figure 1 : EL 9399 boundaries and land ownership

## 2.0 CONSULTATION UNDERTAKEN

---

WCPL continues to undertake a targeted approach to stakeholder engagement relating to exploration and operational matters – including exploration activities associated with EL 9399. In general accordance with the WCPL's *Community Consultation Plan for EL 9399*, the following consultation was undertaken with key landholders and community representatives during the reporting period.

### 2.1 Agency Consultation

#### 2.1.1 NSW Resources Regulator

Consultation was undertaken with the Senior Inspector Environment and Inspector Environment NSW Resource Regulator, Wilpinjong NSW, 4 August 2023 including:

- Assessable Prospecting Operations (APO) for first stage (89 drilling locations) approved 2 August 2022
- Assessable Prospecting Operations (APO) for second stage (170 drilling locations) approved 1 May 2023
- 97 holes complete to 18 July 2023
- Focus areas for upcoming drilling
- Preliminary observations from drilling including interception of igneous intrusions.
- Updates on status of Site Verification Certificate (SVC) & Biophysical Strategic Agricultural Land (BSAL)
- Updates on Works Programs & Renewal Justification Statements for EL 7091 & EL 6169

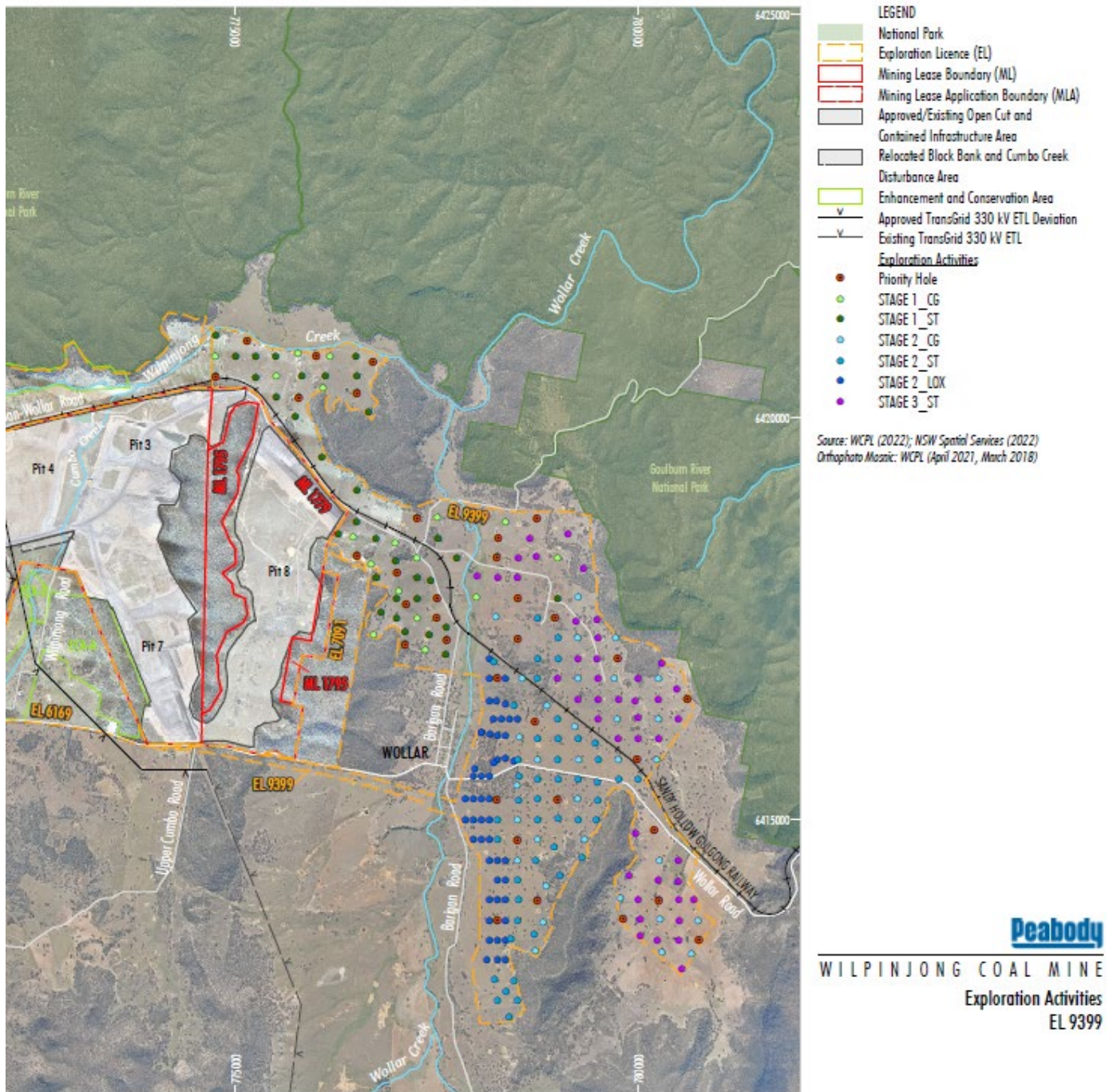


Figure 2 : WCPL EL 9399 proposed exploration activities

## 2.2 Community Consultation Committee (CCC)

In accordance with Condition 7, Schedule 5 of Development Consent SSD-6764, WCPL established a Community Consultation Committee (CCC) to the satisfaction of the Director-General in 2006. The CCC continues to operate as per the SSD and the recently released Community Consultative Committee Guidelines – State Significant Projects (NSW Department of Planning, November 2016). The WCPL CCC comprises an independent chairperson, representatives of the Mid-Western Regional Council (MWRC) and members of the local community.

Current community representatives are:

- Chair approved by Director General of DPHI, funded by Peabody Australia;
- Community member (resident);
- Community member (former resident);
- Community member (lessee of Peabody pastoral land and former resident);
- Community member and lessee of Wollar General Store;
- NSW National Parks & Wildlife;
- Community member
- Community member (resident); and
- MWRC Councillor

WCPL representatives are:

- Environment & Community Manager;
- Manager Project Development and Approvals;
- Compliance Manager,
- Senior Environmental Advisor;
- Environmental Advisor; and
- Environmental Coordinator.

As indicated above, the WCPL CCC consists of a cross-section of the local community.

This committee is the primary mechanism by which exploration information is provided to the local community for awareness, updating and discussion.

The following table provides a summary of information provided to CCC members regarding exploration activities during meetings held throughout the reporting period.

It should be noted that information provided to CCC members during these meetings was related to the entire exploration drilling program across the Mining Leases, EL 6169, EL 7091 and EL 9399, and not specifically to EL 9399.



**Table 1: Exploration Information provided to WCPL CCC**

CCC Meeting Date	Exploration Summary
5 June 2023	<ul style="list-style-type: none"> <li>• <b>EL 9399 Drill Program Overview:</b> <ul style="list-style-type: none"> <li>• Entire planned program consists of 259 holes.</li> <li>• Stage 2 APO approved on May 1 for 170 holes, entire program now approved.</li> </ul> </li> <li>• <b>Drilling Progress:</b> <ul style="list-style-type: none"> <li>• Two rigs in operation, completed 57 holes as of 16 May.</li> <li>• Currently processing 2 GHG holes.</li> </ul> </li> <li>• <b>Program Timeline:</b> <ul style="list-style-type: none"> <li>• Plan to complete all holes by the end of June for full EL area coverage.</li> </ul> </li> <li>• <b>Current Program Plan:</b> <ul style="list-style-type: none"> <li>• <b>Area 1 (north of pit 3):</b> <ul style="list-style-type: none"> <li>• Complete drilling by end of July; only core holes remain.</li> </ul> </li> <li>• <b>Area 2 (east of pit 8):</b> <ul style="list-style-type: none"> <li>• Complete drilling by June.</li> </ul> </li> <li>• <b>Tralee:</b> <ul style="list-style-type: none"> <li>• Commence drilling in June; complete by end of November (map of initial holes below).</li> </ul> </li> </ul> </li> </ul> <p><b>Ongoing Tasks and Studies:</b></p> <ul style="list-style-type: none"> <li>• Rehab tasks initiated in Area 1 and 2.</li> <li>• Baseline studies in progress.</li> <li>• BSAL initial soil testing completed.</li> <li>• Aquatic ecology conducted.</li> <li>• Biodiversity assessments ongoing.</li> <li>• Historic Heritage and Land contamination assessment completed.</li> </ul> <p>Commissioning of remaining studies continues.</p>
4 September 2023	<p><b>EL 9399 Drill Program Progress (as of 29 Aug):</b></p> <ul style="list-style-type: none"> <li>• 121 holes completed.</li> <li>• Results align with expectations.</li> <li>• Additional 2 GHG holes finished, covering the entire EL area.</li> </ul> <p><b>Rehabilitation and Grouting:</b></p> <ul style="list-style-type: none"> <li>• Ongoing rehabilitation and grouting activities.</li> <li>• 35 sites rehabilitated to date; 1 site remains in the area east of pit 8.</li> <li>• 60 holes have been grouted.</li> </ul>

CCC Meeting Date	Exploration Summary
	<p><b>Upcoming Activities:</b></p> <ul style="list-style-type: none"> <li>• A 3rd rig is set to commence on Sept 7.</li> <li>• The 3rd rig will initially target remaining holes in the Tralee area.</li> </ul> <p><b>Baseline Studies and Notifications:</b></p> <ul style="list-style-type: none"> <li>• Baseline studies ongoing.</li> <li>• SVC advertisement and application, along with ACHA notification in progress.</li> </ul>
27 November 2023	<ul style="list-style-type: none"> <li>• 183 holes complete to 21 November</li> <li>• Approx 83 holes remain</li> <li>• Results continue as expected               <ul style="list-style-type: none"> <li>○ Next swing 30 Nov – 13 Dec (3 rigs), then break from 14 Dec to 10 Jan. Returning 11 Jan 2024</li> </ul> </li> </ul> <p>Drilling likely to be completed in Feb 2024</p>
4 March 2024	<p><b>EL 9399</b></p> <ul style="list-style-type: none"> <li>• 262 holes complete to 25 Feb 2024</li> <li>• All exploration holes complete as of 25 Feb 2024</li> <li>• Results continue as expected</li> <li>• Grouting continues, 155 holes to grout - rehabilitation to follow</li> <li>• Pit 10 holes - grouting and rehab completed</li> <li>• 4 large diameter holes to drill, likely to be completed by end of March 2024</li> </ul>

## 2.3 Mid-Western Regional Council

Information relating to exploration drilling was provided to the Mid-Western Regional Council during the CCC meetings (See **Table 1**).

## 2.4 Registered Aboriginal Parties Consultative Committee

In accordance with the project approved Aboriginal Cultural Heritage Management Plan, and site Aboriginal Consultation protocol WCPL continues to hold a Registered Aboriginal Parties Consultation Committee (RAPCC) meeting every six months (or more frequently if necessary). The purpose of the RAPCC meetings is to discuss operational Cultural Heritage issues at WCPL over the preceding year and proposed works that will have cultural heritage implications for the Mine for the upcoming year.

This committee is comprised of one representative from each of the Registered Aboriginal Parties (RAPs) WCPL Environment and Community Manager and the Project Approval Manager. In addition, a WCPL provides administrative support for the purpose of keeping the minutes of the meetings.

RAPCC meetings during the reporting period were held on:

- 19 June 2023
- 8 September 2023
- 1 December 2023.
- 8 March 2024

Information relating to exploration provided to RAPCC was identical to the information provided to CCC members. No additional issues of concern relating to exploration activities were raised by members during these meetings.

Representatives from the RAPCC were invited to participate in the Due Diligence surveys (October 2022 & January 2023) associated with EL 9399 Stage 1 & 2 APO's.

## 2.5 Cultural Heritage Liaison Sub-Committee

The Cultural Heritage Liaison Sub Committee (CHLSC) was formed as a means by which WCPL could consult with members of the Aboriginal community who are party to the existing Ancillary Agreement. The CHLSC will continue to operate in order to deal with cultural heritage matters as specified in the terms of the Ancillary Agreement. In accordance with the "Ancillary Agreement", all matters associated with the implementation of the Agreement will remain confidential between the parties to the Ancillary Agreement. The CHLSC will convene in accordance with the Ancillary Agreement to discuss cultural heritage issues at the Mine over the preceding year, and proposed works that will have cultural heritage implications for the Mine for the upcoming year.

CHLSC meetings during the reporting period were held on:

- 20 June 2023
- 11 September 2023
- 4 December 2023
- 11 March 2024

Information relating to exploration provided to CHLSC was identical to the information provided to CCC members. No additional issues of concern relating to exploration activities were raised by members during these meetings.

## 2.6 Landholder Communication

During the reporting period, landholder consultation was undertaken with following lease holders:

- Leasee 1- 19<sup>th</sup> & 25<sup>th</sup> May, 28<sup>th</sup> June and 24<sup>th</sup> July 2023; and
- Leasee 2 - 25<sup>th</sup> May and 7<sup>th</sup> September 2023.

Both lease holders were provided with information regarding:

- Exploration program commencement;
- Site location, access and preparation activities;
- Type of exploration activities;
- Number of drill rigs and operational times; and
- Duration of program

An example of the communication to the lease holder has been provided in Appendix 1.

## 2.7 'Have a Chat' - informal meetings

WCPL provides the local community with an opportunity to discuss operational and exploration (all mining) activities on a monthly basis. These 'Have a Chat' sessions are held on a one-on-one basis at the local Wollar General Store. The community is advised about 'Have a Chat' sessions via the WCPL website, during CCC meetings, and via posters at the Wollar General Store. Details of exploration specific consultation are captured in Table 2 below.

**Table 2 - Exploration specific consultation**

Have a Chat	Attendees	Exploration related discussion points
4 May 2023	Five Community Members and Lease holder	Future project and modification areas in relation to current exploration program Exploration and Rehabilitation status update Lease specific Exploration and Rehabilitation update
7 September 2023	Lease holder	Exploration and Rehabilitation status update

Have a Chat	Attendees	Exploration related discussion points
2 November 2023	Two Lease holders	EL9399 exploration drilling status update and access requirements
7 December 2023	Two contactors, six Lease holders and a community member	EL9399 update on exploration program inclusive of rehabilitation process and fire controls
4 January 2024	Lease Holder	EL9399 update on commencement of drilling program following Christmas break
1 February 2024	Two Lease holders	Update on EL9399 drilling program

## 3.0 OUTCOMES OF CONSULTATION

---

During the reporting period, stakeholders were consulted about current and future exploration activities in EL9399 and included:

- Program status – location & timing
- Types of drill holes;
- Preparation works;
- Weather & equipment-related impacts;
- Rehabilitation works; and
- Upcoming exploration applications.

Questions raised by community members during Exploration consultation related to:

- Drill rig locations;
- Assessment process for each drill location;
- Converting drill holes to water monitoring locations;
- Program delays & weather considerations;
- Potential Project approval pathways;
- Infrastructure relocation/realignment requirements; and
- Site rehabilitation status/timing.

No issues of concern or complaints relating to exploration activities were received by WCPL.

During the reporting period no issues of concern or feedback regarding the exploration activities relating to EL9399 were raised by members of the public or Government Departments.

During community consultation WCPL requested feedback from both community groups and Government Regulators regarding the method of consultation for exploration activities. Neither party had any issues with the current consultation format.

### 3.1 Proposed Future Consultation

WCPL proposes to continue to inform the local community and landholders/lessees about exploration and operational matters via the current avenues, namely, quarterly CCC meetings, WCPL website and targeted stakeholder communication. Community members are also able to communicate issues or concerns to WCPL staff during the monthly Wollar 'Have a Chat' sessions or via the 1300 community enquiries line at any time.

WCPL proposes to continue providing updated exploration activities on the company website. (<http://www.peabodyenergy.com/content/427/Australia-Mining/New-South-Wales/Wilpinjong-Mine/>)

Regarding government agency consultation, WCPL will continue to prepare and submit all appropriate documentation to the relevant agencies for approval. This includes the appropriate Activity Approvals for Exploration and notice of intent to undertake exploration drilling.

WCPL will continue to review and update the Community Consultation Strategy and Plan as required during 2024.

## 4.0 ENQUIRIES & COMPLAINTS

---

A protocol for the management and reporting of complaints has been developed as a component of the Mine Environmental Management System (EMS). In accordance with Condition M6.1 of Environmental Protection Licence (EPL 12425), a dedicated telephone number for the provision of comments or complaints is maintained by WCPL. This number is 1300 606 625.

In accordance with Condition M6.2 of the WCPL's EPL (12425), this telephone number is advertised in local newspapers quarterly, via the Wilpinjong community newsletter and on the Peabody website.

WCPL has developed a Complaint Response Protocol to ensure community concerns – including concerns regarding exploration – are appropriately managed and addressed. The response protocol is outlined below:

1. Accurately recording all relevant details regarding the complaint in a Complaints Register, including:
  - The date and time of the complaint;
  - The method by which the complaint was made; (e.g. phone, email);
  - Any personal details provided by the complainant (e.g. name and address) or, if no such details were provided, a note to that effect;
  - The nature of the complaint;
  - The action taken by the WCPL in relation to the complaint, including any follow-up contact with the complainant; (See *also*, steps 2-4) and
  - If no action was taken by the licensee, the reasons why no action was taken.
2. Undertaking investigations into the likely cause of the complaint using relevant information including meteorological conditions, activities occurring related to exploration and the time of the complaint;
3. Assessing and implementing additional control measures, if required; and
4. Monitoring and assessing the effectiveness of the additional controls.

WCPL records and responds to all complaints and maintains a complaints register on its website. The complaints are managed in accordance with the WCPL Complaints Management Protocol.

During the reporting period, no complaints or enquires relating to exploration activities relating to EL9399 were received by WCPL.



## Appendix 1 – Leaseholder communication.

[REDACTED]

---

**From:** [REDACTED]  
**Sent:** Wednesday, 28 June 2023 2:09 PM  
**To:** [REDACTED]  
**Subject:** Drillholes south of rail line  
**Attachments:** Pit 9 & Pit 10, DH\_230626.pdf

[REDACTED]

Please see attached map of initial exploration holes planned to be drilled in your lease area south of the rail way line. Drilling of these holes will commence from 6 July 2023 and will initially include each of the holes shown on the map. On completion of these holes further holes will be drilled in the same area but to a higher density

Thanks

[REDACTED]

The Peabody logo is displayed in a bold, blue, sans-serif font. The word "Peabody" is written in a single line, with a horizontal line underneath the letters "o" and "d".



[REDACTED]

---

**From:** [REDACTED]  
**Sent:** Thursday, 25 May 2023 8:40 AM  
**To:** [REDACTED]  
**Cc:** [REDACTED]  
**Subject:** Start of Drilling - Tralee North  
**Attachments:** Tralee North Planned Drilling.pdf  
**Importance:** High

[REDACTED]

Please see the attached map of the next area that is planned to be drilled. It is planned for one drill rig (MD72) to be in the area at the start of June.

Only the green dots will be drilled the reds will be drilled later (TBA).

The pink dots are where a fence will be cut and a cocky's gate will be installed. These areas will be fixed as soon as the drill site has been rehab.

[REDACTED] – I have included you to keep you up to date with progress.

Any questions please let me know

Regards

[REDACTED]

**Peabody**

WILPINJONG COAL MINE COMMUNITY CONSULTATION REPORT  
 EL 9399: 3 May 2023 - 2 May 2024

