

# **WILPINJONG COAL HISTORIC HERITAGE MANAGEMENT PLAN**

WI-ENV-MNP-0044

September 2024

Document Owner				Document Approver	
Environmental Advisor				Environment and Community Manager	
Version		Approval Date		Approver Name	
7	Sept 2024		Kieren Bennetts		
General Description of Changes from Previous Version					
Document No.	Version	Date	Prepared/Reviewed By	Distribution	Description of Change
WI-ENV-MNP-0044	1	August 2017	WCPL, Niche	DP&E, OEH	SSD-6764
WI-ENV-MNP-0044	2	December 2017	WCPL	DP&E	Append ARD
WI-ENV-MNP-0044	3	September 2019	WCPL	DPIE	Updated to include revised disturbance footprint boundary in Pit 8
WI-ENV-MNP-0044	4	August 2020	WCPL	DPIE	Updated to include results of completed ARD, archival recording of the Historic Shale Oil Mine Complex and include ML1795 and update figures accordingly
WI-ENV-MNP-0044	5.1	June 2021	WCPL	DPIE	Updated included Section 4.7 Archival Reports for Wollar Churches and Wollar Buildings, record of buildings demolished in Wollar during 2020 and revised disturbance footprint boundary in Pit 6.
WI-ENV-MNP-0044	6	June 2022	WCPL	DPIE	Updated included record of WCPL owned dilapidated buildings demolished in Wollar during 2021.
WI-ENV-MNP-0044	7	Sept 2024	WCPL	DPHI	Revision of HHMP was in consideration of MOD2, MOD4 and to update all applicable figures displaying recently granted ML1846 and EL9399. Updated included record of WCPL owned dilapidated buildings demolished in Wollar during 2022, 2023 and proposed for 2024.

## CONTENTS

<b>1</b>	<b>Introduction</b>	<b>1</b>
1.1	Purpose	1
1.2	Consultation	1
1.3	Suitably Qualified and Experienced Persons	4
1.4	Staged Submission of HHMP	4
<b>2</b>	<b>Statutory Requirements</b>	<b>5</b>
2.1	Development Consent (SSD-6764) Requirements	5
2.2	General Management Plan Requirements	6
2.3	Other Relevant Legislation	6
2.3.1	Environmental Planning & Assessment Act, 1979	6
2.3.2	Heritage Act, 1977	6
<b>3</b>	<b>Historic Heritage</b>	<b>8</b>
3.1	Previous Assessments and Investigations	8
3.2	Historic Heritage Items	9
3.3	Historic Heritage Values	12
<b>4</b>	<b>Management Measures</b>	<b>13</b>
4.1	Specific Management Measures	13
4.1.1	Historic Shale Oil Mine Complex, Slate Gully (Site 1)	13
4.1.2	Road Embankment (Site 4)	15
4.1.3	Pine Park (Site 5)	16
4.1.4	William Carr's Hut (Site 11)	17
4.2	Annual Monitoring	18
4.3	New Site Recording Protocol	18
4.4	Protocol for the Management of Human Remains	18
4.5	Ground Disturbance Permits	19
4.6	Historic Heritage Component of Site Induction	19
4.7	Management of Historic Heritage Items in Wollar and Wider Surrounds	19
4.7.1	Wollar Churches Archival Recording	20
4.7.2	Wollar Buildings Archival Recording	20
4.7.2.1	Demolition of Wollar Buildings	21
4.8	Storage of Heritage Items Salvaged	27
<b>5</b>	<b>Measurement and Evaluation</b>	<b>28</b>
5.1	Performance Indicators	28
5.2	Contingency Plan for Unpredicted Impacts	28
<b>6</b>	<b>Complaints Response Protocol</b>	<b>29</b>
<b>7</b>	<b>Reporting</b>	<b>30</b>
7.1	Incident and Non-Compliance Reporting	30
7.2	Annual Review	30
7.3	Independent Environmental Audit	31
7.4	Access to Information	32
<b>8</b>	<b>Review and Improvement</b>	<b>33</b>
8.1	Updating Plans	33

<b>9</b>	<b>Responsibilities</b>	<b>34</b>
<b>10</b>	<b>References</b>	<b>35</b>

## **TABLES**

Table 2-1 WCPL's Statutory Approvals .....	5
Table 2-3 Development Consent (SSD-6764) Requirements .....	5
Table 2-4 General Management Plan Requirements.....	6
Table 3-1: Known Historic Heritage Items.....	10
Table 3-2 Heritage Values of Known Historic Heritage Items .....	12
Table 4-1 Record of Buildings Demolished in Wollar 2020.....	21
Table 4-2 Record of Buildings Demolished in Wollar 2021 .....	22
Table 4-3 Record of Buildings Demolished in Wollar 2022.....	23
Table 4-4 Record of Buildings Demolished in March 2024 .....	24
Table 4-5 Record of Buildings Proposed for Demolition in 2024 .....	25
Table 5-1 Historic Heritage Performance Indicator .....	28
Table 9-1 Historic Heritage Management Plan Responsibilities .....	34

## **FIGURES**

Figure 1-1Regional Location .....	3
Figure 3-1 Relevant Historic Heritage Items .....	11
Figure 4-1 Historic Heritage Buildings of Wollar.....	26

## **PLATES**

Plate 1: Historical Shale Oil Mine Adit (Niche, 2015) .....	13
Plate 2: Road Embankment (Niche, 2015).....	15
Plate 3: Pine Park Grain Silo and Shed (Niche, 2015).....	16
Plate 4: William Carr's Hut (Niche, 2015).....	17

## **APPENDICES**

Appendix 1	Wilpinjong Caretakers Cottage Archaeological Excavation Report
Appendix 2	Historic Heritage Items in Wollar and Surrounds
Appendix 3	Management Plan Consultation
Appendix 4	Wilpinjong Shale Oil Mining Complex Slate Valley Photographic Archival Recording
Appendix 5	Wollar Churches Archival Recording
Appendix 6	Wollar Buildings Archival Recording

# 1 Introduction

The Wilpinjong Coal Mine (the Mine) is owned and operated by Wilpinjong Coal Pty Limited (WCPL), a wholly owned subsidiary of Peabody Energy Australia Pty Ltd (Peabody).

The Mine is an existing open cut coal mining operation situated approximately 40 kilometres north-east of Mudgee, near the Village of Wollar, within the Mid-Western Regional Local Government Area, in central New South Wales (NSW) (Error! Reference source not found.-1).

The Mine produces thermal coal products which are transported by rail to domestic customers for use in electricity generation and to port for export. Open cut mining operations are undertaken 24 hours per day, seven days per week. The Mine originally operated under Project Approval (PA 05-0021) that was granted by the Minister for Planning under Part 3A of the NSW *Environmental Planning and Assessment Act, 1979* (EP&A Act) on 1 February 2006.

On 24 April 2017, WCPL was granted Development Consent (SSD-6764) for the Wilpinjong Extension Project (WEP) that provides for the continued operation of the Mine at rates of up to 16 million tonnes per annum of run-of-mine coal, until 2033, and access to approximately 800 hectares of open cut extensions. The Development Consent (SSD-6764) has superseded PA 05-0021. This Historic Heritage Management Plan (HHMP) has been prepared to satisfy the relevant conditions in Development Consent (SSD-6764).

## 1.1 Purpose

The HHMP has been prepared to address the conditions relating to historic heritage management contained within WCPL's relevant approvals. Consistent with Condition 49, Schedule 3 of Development Consent (SSD-6764) as modified, the HHMP includes a program and description of the measures/procedures that would be implemented for historic heritage management at the Wilpinjong Coal Mine.

## 1.2 Consultation

Consultation was undertaken with a variety of regulators throughout the assessment and approval of the WEP including with the former NSW Office of Environment and Heritage (OEH). The HHMP has been prepared in consultation with Heritage NSW (HNSW), formally the OEH – Heritage Division, the Mid-Western Regional Council (MWRC) and relevant landholders<sup>1</sup>, as required by Condition 49(b), Schedule 3 of Development Consent (SSD-6764).

On the 8 August 2019, WCPL commenced consultation with the former Department of Planning and Environment (DPE), now Department of Planning, Housing and Infrastructure (DPHI), to request a minor variation to increase the disturbance footprint and open cut boundary to Pit 8, arising from refinement to the Pit 8 detailed design. On the 23 August 2019, WCPL received approval from the DPHI that the proposed minor changes to the footprint area of Pit 8 are generally in accordance with the WEP and project approval. Accordingly, WCPL have updated all relevant management plans required by SSD-6764 to reflect this change, as discussed with the DPHI.

During May 2021, WCPL sought consultation with the DPHI to request a minor variation to increase the disturbance footprint and open cut boundary of Pit 6, arising from refinement to the detailed design allowing access to additional coal reserves at the south-western boundary of Pit 6 (**Figure 2-1**). On the 7<sup>th</sup> June 2021, WCPL received approval from the DPHI regarding the minor variation to the disturbance footprint area of Pit 6 being deemed generally in accordance with the WEP and project approval. Noting that minor changes to the disturbance footprint were contemplated following detailed design.

---

<sup>1</sup> WCPL is the landholder of all items the subject of management measures described in this HHMP and therefore no additional landholders require consultation.

Accordingly, WCPL have updated all relevant management plans required by SSD-6764 to reflect this change, as required by the DPHI.

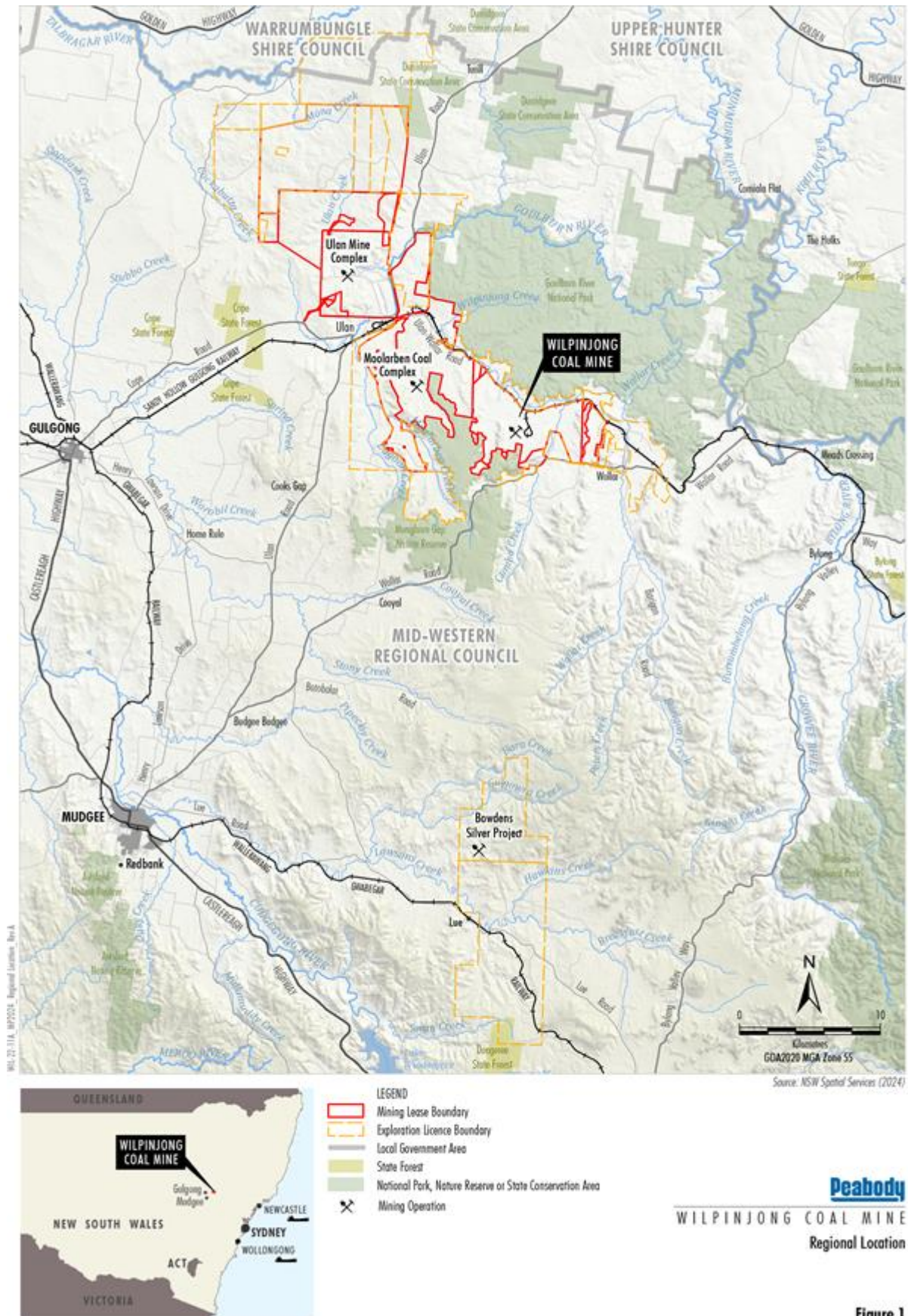
WCPL were granted approval to modify Development Consent (SSD-6764) to incorporate a temporary on-site accommodation facility and excise four parcels of Crown land from the Development Application area (Modification 2). Modification 2 (MOD 2) was approved by DPHI on the 3 July 2024.

Modification 4 (MOD 4) of SSD-6764 was sought by WCPL to facilitate the changes required for the Central-West Orana Renewable Energy Zone Transmission Project (SSI-48323210) (the CWO transmission line) (**Figure 3-1**), which was approved on the 26 June 2024 by the Minister of Planning. MOD 4 was approved on the 16 September 2024.

Consultation during the review of the HHMP (Version 7) with Mid-Western Regional Council (MWRC) and the Heritage Council of NSW was completed during October 2024. Both the MWRC and Heritage Council had no further comments to address within the HHMP (**Appendix 3**).



Figure 1-1 Regional Location



### 1.3 Suitably Qualified and Experienced Persons

The Secretary of DPHI approved Mr Jamie Reeves and Fiona Leslie of Niche Environment and Heritage Pty Ltd (Niche) for the preparation/review of the HHMP on 24 May 2017. Previous versions of this HHMP was prepared in consultation with Jamie Reeves and Fiona Leslie.

### 1.4 Staged Submission of HHMP

The initial HHMP did not include the Archaeological Research Design (ARD) for the test and salvage excavation required at the potential caretaker's cottage site in Pit 8.

During preparation of the initial draft HHMP, Niche identified some further research requirements in relation to the potential caretaker's cottage site (Site 1G), that were subsequently actioned prior to development of an ARD.

As agreed with DPHI, following the completion of the required research, WCPL provided the ARD to the relevant consultees for review and comment. Following finalisation (including addressing any comments) the ARD was provided to the DPE for subsequent separate approval by the Secretary in accordance with Condition 6, Schedule 5 of Development Consent (SSD-6764).

As required by the ARD, the test and salvage excavation (archaeological) for the potential caretakers cottage was completed by Niche in November 2019 (March, 2020) (**Section 4.1.1** and **Appendix 1**).



## 2 Statutory Requirements

This HHMP has been prepared to fulfil the requirements of the Development Consent (SSD-6764), recommendations documented in relevant studies, assessments and investigations, and relevant legislation, standards and guidelines.

Error! Reference source not found. summarises WCPL's main statutory approvals, relevant to the HHMP.

**Table 2-1 WCPL's Statutory Approvals**

Approval/Licence No.	Description	Date of Approval	Agency
<b>SSD-6764</b>	Project Approval	24 April 2017	DPHI
<b>EPL 12425</b>	EPL	01 March 2023*	EPA

Notes:\* Date of last EPL Variation

### 2.1 Development Consent (SSD-6764) Requirements

This HHMP has been prepared in accordance with Condition 49, Schedule 3 of Development Consent (SSD-6764). **Table 2-2-3** presents these requirements and indicates where they are addressed within this HHMP.

**Table 2-2 Development Consent (SSD-6764) Requirements**

Development Consent (SSD-6764) Condition	HHMP Section
<b>Historic Heritage Management Plan</b>	
49. Prior to carrying out any development under this consent, unless the Secretary agrees otherwise, the Applicant must prepare an Historic Heritage Management Plan for the development to the satisfaction of the Secretary. The plan must:	
(a) be prepared by suitably qualified and experienced persons whose appointment has been endorsed by the Secretary;	<b>Section 1</b>
(b) be prepared in consultation with the Heritage NSW, Council and relevant landowners; and	<b>Section 1.2</b>
(c) include the following for the management of historic heritage:	<b>Section 4.7</b>
<ul style="list-style-type: none"> <li>ensure any workers on site receive suitable heritage inductions prior to carrying out any project on site, and that suitable records are kept of these inductions;</li> <li>a program and description of the measures/procedures that would be implemented for: <ul style="list-style-type: none"> <li>photographic and archival recording of any impacted heritage items;</li> <li>where reasonable and feasible, designing, constructing and operating ancillary infrastructure to avoid direct impacts on historic heritage items;</li> <li>undertaking test and salvage excavation at the Potential Caretakers Cottage Site (Site 1G);</li> <li>monitoring and managing the effects of blasting on potentially affected heritage items;</li> <li>managing the discovery of any new historic heritage items during the development; and</li> <li>additional archaeological excavation and/or recording of any significant heritage items requiring demolition; and</li> </ul> </li> <li>a strategy for the storage of heritage items salvaged on site, both during the development and in the long term.</li> </ul>	<b>Section 4.1 &amp; 4.7</b> <b>Section 4.1</b> <b>Section 4.1.1 and Appendix 1</b> <b>Section 4.2 and Blast Management Plan</b> <b>Section 4.3</b> <b>Section 4.1 &amp; 4.7</b> <b>Section 4.8</b>

## 2.2 General Management Plan Requirements

Condition 3, Schedule 5 of Development Consent (SSD-6764) outlines general management plan requirements that are applicable to the preparation of the HHMP. **Table 2-3** presents these requirements and indicates where they are addressed within this HHMP.

**Table 2-3 General Management Plan Requirements**

Development Consent (SSD-6764) Condition	HHMP Section
<b>Management Plan Requirements</b>	
3. <i>The Applicant must ensure that the management plans required under this consent are prepared in accordance with any relevant guidelines, and include:</i>	
(a) <i>detailed baseline data;</i>	Section 3
(b) <i>a description of:</i>	
• <i>the relevant statutory requirements (including any relevant approval, licence or lease conditions);</i>	Section 2
• <i>any relevant limits or performance measures/criteria;</i>	Sections 4 and 5
• <i>the specific performance indicators that are proposed to be used to judge the performance of, or guide the implementation of, the development or any management measures;</i>	Section 5
(c) <i>a description of the measures that would be implemented to comply with the relevant statutory requirements, limits, or performance measures/criteria;</i>	Section 4
(d) <i>a program to monitor and report on the:</i>	Sections 4 and 7
• <i>impacts and environmental performance of the development;</i>	
• <i>effectiveness of any management measures (see c above);</i>	
(e) <i>a contingency plan to manage any unpredicted impacts and their consequences;</i>	Section 4
(f) <i>a program to investigate and implement ways to improve the environmental performance of the development over time;</i>	Section 8
(g) <i>a protocol for managing and reporting any:</i>	Section 7
• <i>incidents</i>	
• <i>complaints</i>	
• <i>non-compliances with statutory requirements; and</i>	
• <i>exceedances of the criteria and/or performance criteria; and</i>	
(h) <i>a protocol for periodic review of the plan.</i>	Section 8

## 2.3 Other Relevant Legislation

### 2.3.1 Environmental Planning & Assessment Act, 1979

The EP&A Act requires that consideration be given to environmental impacts as part of the land use planning process. In NSW, environmental impacts are interpreted as including historic or non-indigenous heritage impacts.

Development Consent (SDD-6764) for the WEP was sought, and granted, under the State Significant Development provisions (Division 4.1) under Part 4 of the EP&A Act. The Wilpinjong Coal Mine is therefore classified as a 'State Significant Development' under Part 4 of the EP&A Act.

### 2.3.2 Heritage Act, 1977

The NSW *Heritage Act, 1977* was enacted to conserve the environmental heritage of NSW. Under section 32, places, buildings, works, relics, moveable objects or precincts of heritage significance are protected by means of either Interim Heritage Orders (IHO) or by listing on the State Heritage Register (SHR). Items that are assessed as having State heritage significance can be listed on the SHR by the Minister on the recommendation of the Heritage Council.

Archaeological relics are protected by the provisions of section 139 of the *Heritage Act, 1977*. Under this section it is illegal to disturb or excavate any land knowing or suspecting that the disturbance or excavation will, or is likely to, result in a relic being discovered, exposed, moved, damaged or destroyed. In such cases, an excavation permit under section 140 of the *Heritage Act, 1977* is required.

Note that no formal listing is required for archaeological relics; they are automatically protected if they are of local significance or higher. Note that excavation permits under section 139 of the *Heritage Act, 1977* are not required for a State Significant Development approved under Part 4 of the EP&A Act.

Proposals to alter, damage, move or destroy places, buildings, works, relics, moveable objects or precincts protected by an IHO or listed on the SHR require an approval under section 60 of the *Heritage Act, 1977*.

Demolition of whole buildings will not normally be approved except under certain conditions (section 63 of the *Heritage Act, 1977*). Some of the items listed on the SHR or on Local Environmental Plans (LEPs) may either be 'relics' or have relics associated with them. In such cases, a section 60 approval is also required for any disturbance to relics associated with a listed item.

### 3 Historic Heritage

#### 3.1 Previous Assessments and Investigations

Heritage Management Consultants (2004) conducted a historic heritage assessment for the original Wilpinjong Coal Project. The assessment identified nine items of local heritage significance in the vicinity of the Mine. No items of regional or state significance were identified (Heritage Management Consultants, 2004).

Archaeological investigations have also been undertaken for the Moolarben Coal Complex, located adjacent to the Mine. These include studies undertaken by Veritas Archaeology and History Service (2005), Heritas Architecture (2008) and EMGA Mitchell McLennan (2013).

A Historical Heritage Assessment for the WEP was undertaken by Niche (2015). The assessment was prepared in consideration of the relevant principles and articles contained in the *Burra Charter* (Australia ICOMOS, 2013), the *NSW Heritage Manual* (NSW Heritage Office and NSW Department of Urban Affairs and Planning, 1996) and *Statements of Heritage Impact* (OEH, 1996). The assessment included the following (Niche, 2015):

- Searches of the following online databases were undertaken for historic heritage items within the proposed development area:
  - The Australian Heritage Database – a combined search of the Commonwealth Heritage List, National Heritage List and Register of the National Estate archive. No registered items were located within, or adjacent to, the WEP.
  - The NSW State Heritage Register and State Heritage Inventory. No registered items of state significance were listed within, or adjacent to, the WEP.
  - The *Mid-Western Regional Council Local Environmental Plan 2012*. Two landscape areas and four historical heritage items located in the Village of Wollar were identified (three of which were also listed in the National Trust Register). All items were located outside of the WEP open cut extension and infrastructure areas.
  - A search of the National Trust Register (a non-statutory register). Four registered items were identified within the Village of Wollar.
- Historical research was undertaken to provide a contextual history of the WEP area and to determine specific histories for heritage items identified. The following repositories and online sources were utilized:
  - The National Library of Australia's TROVE online discovery service.
  - The State Library of NSW, Mitchell Library.
  - NSW Department of Finance, Lands and Property Information (LPI).
  - The NSW Heritage Branch report library.
- Additional historical information was also sourced from the following:
  - Lynne Robinson and John Broadley from the Mudgee Historical Society.
  - The Mid-Western Regional Council Library.
  - Interviews with Gai and Brian McDermott (local residents).

- A field survey was undertaken by Lydia Sivaraman and Balazs Hansel (Niche), on 1 and 2 July 2014.
- Assessment of significance of any potential historic heritage items identified.
- Preparation of an impact assessment for the potential historic heritage items identified.
- Provision of recommendations for the management and mitigation of potential impacts on identified historic heritage items.

### 3.2 Historic Heritage Items

The historic heritage assessment conducted for the Wilpinjong Coal Project (Heritage Management Consultants, 2004) identified nine items of local heritage significance in the vicinity of the Wilpinjong Coal Mine. Archival recording was undertaken for the following items of local heritage significance (Niche, 2015):

- *Cumbo Creek* (stone cottage);
- *Hillside* (property with multiple buildings);
- *Keylah* (slab building);
- *Warrawong* (slab cottage);
- *Atcheson's Cottage* (Wyangle Portion 19, Parish of Wilpinjong);
- *Loy's Cottage*;
- *Pine Park Woolshed*;
- *Post and Rail Fence* (Portion 106, Parish of Cumbo); and
- *Road Embankment* (Portion 26, Parish of Cumbo).

As a result of the site investigation conducted by Niche (2015), a total of 24 items were documented in the vicinity of the Mine, including 21 items of local historical heritage significance and three items with no historical heritage significance.

Of the identified 21 items of local heritage significance, four have the potential to be impacted by the Mine. These items are listed in **Table 3-1**.

One site, namely the Historic Shale Oil Mine Complex (Site 1) is located in Slate Gully, partially within the approved open cut (Pit 8) boundary. The Historic Shale Oil Mine Complex (Site 1) is comprised of multiple items. Two items associated with the Historic Shale Oil Mine Complex (Site 1) are located within the open cut extension areas (the Retort [Item 1B] and the Potential Caretakers Cottage Site [Item 1G]), and are likely to experience direct impacts. A number of other items that are a part of the Historic Shale Oil Mine Complex (Site 1) are also potentially within ancillary development areas and may potentially experience direct or indirect impacts associated with the Project (Appendix H).

The Road Embankment (Site 4) is located within the construction area for the realignment of the TransGrid Wollar to Wellington 330 kilovolt (kV) electricity transmission line (ETL).

A further two items (Pine Park [Site 5] and William Carr's Hut [Site 11]) are located in relatively close proximity to the Wilpinjong Coal Mine (**Table 3-1**). The locations of these four items are shown on **Figure 3-1**.

The remaining 17 identified items are located away from the Mine, within the Village of Wollar and the broader surrounds.

**Table 3-1: Known Historic Heritage Items**

Site Number <sup>1</sup>	Historic Heritage Item	Description <sup>2</sup>	Easting (Zone 56 GDA)	Northing (Zone 56 GDA)
1	<b>Historic Shale Oil Mine Complex</b>		-	-
	1A – Adit	Abandoned historical shale oil mine adit, reinforced with timber beams.	774898	6418956
	1B – Retort	Large concrete blocks lying next to a concrete slab.	775029	6418871
	1C – Ramp leading to Retort	Gravelled ramp extending partway between the adit and ramp.	774973	6418877
	1D – Post and Rail Fence Remains	Collapsed timber post and rail fence.	774994	6418838
	1E – Glass Bottles	Three discarded glass bottles, located near the post and rail fence.	774978	6418848
	1F – Ventilation Shaft	Vertical shaft, much smaller than the mine adit, most likely used for ventilation.	774826	6418654
	1G – Possible Location of Caretaker's Cottage	Level area of land with brick fragments.	775088	6418963
	1H – Fireplace Remains	Cement and stone fireplace. The only obvious remains of the potential Caretaker's Cottage.	775009	6419003
	1I – Cut Timber Stockpile	A cut hardwood timber stockpile near the entrance to the mine adit.	774962	6418968
4	Road Embankment	The downslope retaining wall of the road, built with un-coursed stone to create an embankment.	772555	6416975
5	Pine Park	Comprised of a homemade grain silo, a large open pole shed and a woolshed.	772883	6416919
11	William Carr's Hut	A c1883 hut with multiple extensions.	766167	6423798

Source: after Niche (2015).

<sup>1</sup> The item number correlates with the numbers presented on Figure 2.

<sup>2</sup> A detailed description of each item is provided in Niche (2015).



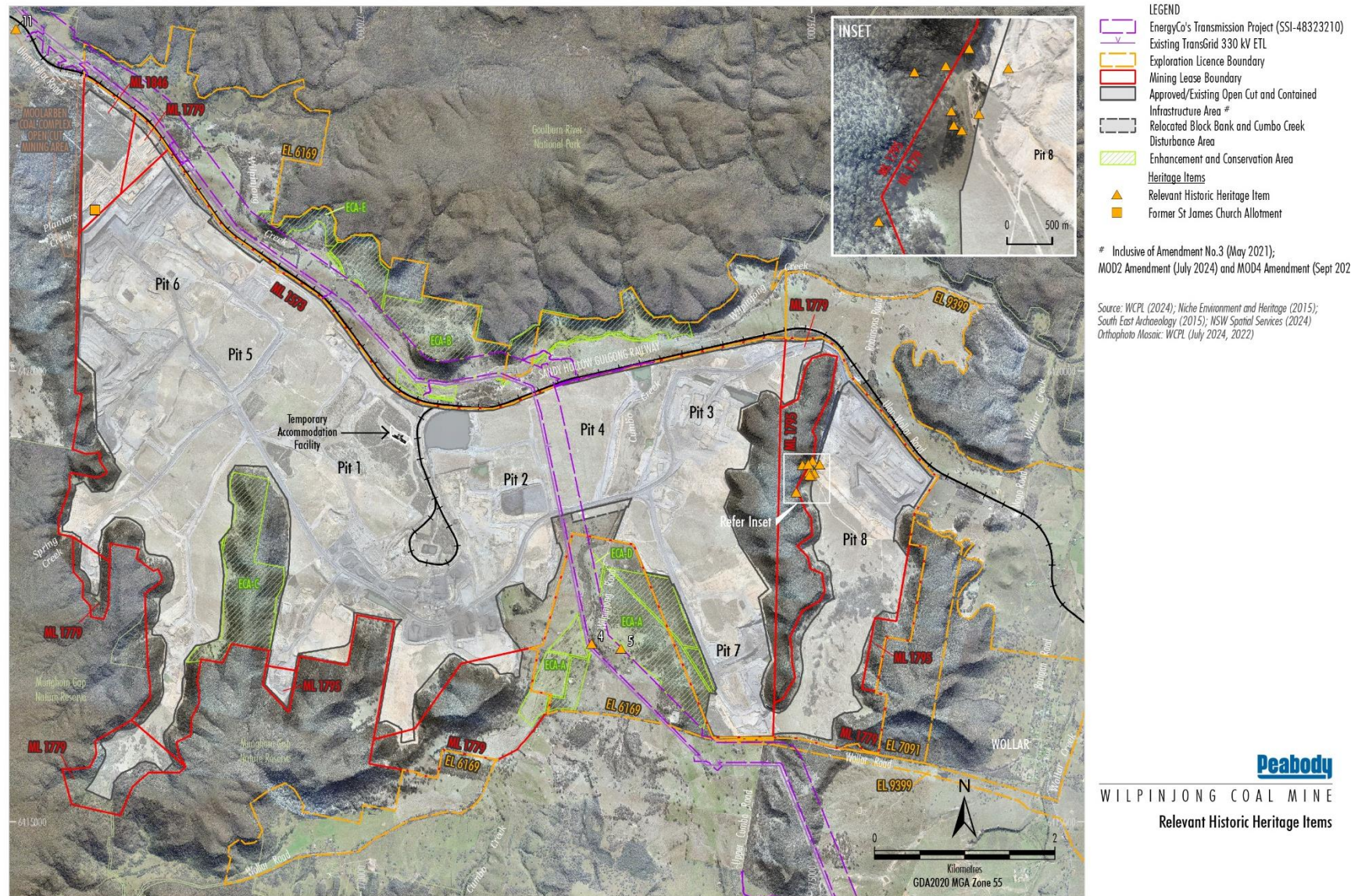


Figure 3-1 Relevant Historic Heritage Items



### 3.3 Historic Heritage Values

All previously identified historic heritage items were assessed to be of local heritage significance (Heritage Management Consultants, 2004; Niche, 2015). A description of the heritage values for each of the identified historic heritage items that may be subject to impact are summarised in **Table 3-2**.

**Table 3-2 Heritage Values of Known Historic Heritage Items**

Historic Heritage Item	Relevant Values/Characteristics
<p>Historical Shale Oil Mine Complex</p> <p><b>(local significance)</b></p>	<p><i>"The shale oil mining industry was important in the course of NSW as a way of obtaining crude oil for fuel. The Shale Oil Mine at Wollar reflected this industry, and contributed to the growth of the Wollar Village where many of the miners lived" (Niche, 2015).</i></p> <p><i>"The Shale Oil Mine has strong associations with the renowned prospector Mancq who worked on many oil mine sites internationally, and in the local area with associations to the Mudgee Imperial Shale Oil Company that ran the operations of the Wollar mine and the operations of other shale mines in the region. The Shale Oil Mine contributed significantly to the shale oil industry in the local area and the long continued history of mining in the wider area" (Niche, 2015).</i></p> <p><i>"The construction of the mine adit, vent shaft and the retort and oil refinery equipment were instrumental in the daily operations of the Shale Oil Mine. The refinery machinery at Wollar was part of a new Australian-made process that extracted greater quantities of oil. The engineering demonstrates a high degree of technical achievement of oil extraction during the early 1930s" (Niche, 2015).</i></p> <p><i>"Archaeological investigation of the Caretaker's cottage could potentially reveal some information which could contribute to the understanding of the caretaker's role in operations of the mine, and of the daily life of the caretaker and his family that lived at the mine site" (Niche, 2015).</i></p> <p><i>"Shale mines were not particularly rare or uncommon in the area during the early 1930s. An earlier and larger shale mine operated at nearby Barrigan. However, the status of the former Barrigan mine is uncertain and there are no shale mines listed on the Mid Western Regional LEP. As shale is rarely mined these days, physical evidence of this once common activity is becoming increasingly rare" (Niche, 2015).</i></p> <p><i>"The mine adit, ventilation shaft, the remains of the retort and evidence of the Caretaker's cottage demonstrate the principle characteristics of shale mine sites in the early 1930s" (Niche, 2015).</i></p>
<p>Road Embankment</p> <p><b>(local significance)</b></p>	<p><i>"The Road Embankment is one of the few nineteenth century (approximate) notable civil works in the area. It demonstrates changes to the local road network as a result of patterns of European settlement of the Wilpinjong area, whereby locals required decent access through the area and to their properties" (Niche, 2015).</i></p>
<p>Pine Park</p> <p><b>(local significance)</b></p>	<p><i>"The woolshed demonstrates settlement patterns of the Wilpinjong area. It is the best preserved older shed in the Project area and is representative of shearing (as being the main industry in the Project area) and the nature of small-farm shearers" (Niche, 2015).</i></p> <p><i>"The woolshed and Pine Park, in general, is typical of shearing sheds of small-holdings, and is a good example of its type" (Niche, 2015).</i></p>
<p>William Carr's Hut</p> <p><b>(local significance)</b></p>	<p><i>"The slab cottage was built in the 1880s during a period of population decline after a surge in the late 1870s. It reflects the economic hardship in the area and the shortage of affordable access to building materials. It represents a period in the Wilpinjong area when slab constructed housing was a common form of housing vernacular" (Niche, 2015).</i></p> <p><i>"Archaeological excavation of artefact deposits at the site would contribute to the understanding of daily life of early settlers in the area, such as the Carr family. Such deposits may be found in places such as a well, a privy or a rubbish dump which would have been associated with the hut" (Niche, 2015).</i></p>

Source: Niche (2015).

## 4 Management Measures

### 4.1 Specific Management Measures

The Historic Heritage Assessment (Niche, 2015) prepared for the WEP provided management recommendations for the identified historic heritage items. These recommendations have been incorporated into this HHMP in the subsections below.

In addition to the measures outlined below, it is noted that ancillary development at the Mine is subject to final design, and where practicable, infrastructure would be located to avoid direct impacts to historic heritage items.

#### 4.1.1 Historic Shale Oil Mine Complex, Slate Gully (Site 1)

WCPL have engaged a suitably qualified heritage consultant to conduct and complete both the test excavation for the potential caretakers cottage and the archival recording<sup>2</sup> of all the features of the Historic Shale Oil Mine Complex (**Figure 3-1** and **Table 3-1**) prior to the commencement of any mining works associated with the open cut in Pit 8 (**Appendix 1**).



**Plate 1 Historical Shale Oil Mine Adit (Niche, 2015)<sup>3</sup>**

<sup>2</sup> The OEH Heritage Branch (2006) stated guidelines in the 'Photographic Recording of Heritage Items Using Film or Digital Capture'. The record would include, as a minimum, a photographic record with notes and cross-referencing to base plans.

<sup>3</sup> A pipe culvert was inserted in front of the adit with a diameter of 900mm suitable to allow bats free access in 2019 as required by the BMP. In 2023 upgrades to the bat adit culvert were undertaken. The much larger 1200mm wide new culvert was designed and installed in consultation with UCMPL's microbat specialists and is considered above the requirement for bats to maximise their ability to leave and return to the Adit. For more information refer to Section 7.5 of the Biodiversity Management Plan (BMP).

The test and salvage excavation (archaeological) for the potential caretakers cottage (Site 1G) was completed by Niche in November 2019 (March, 2020) (**Appendix 1**) in accordance with the Archaeological Research Design (ARD) <sup>4</sup>, prior to surface disturbance activities at the inferred location of the cottage.

A summary of the excavation results by Niche in the *Wilpinjong Caretakers Cottage Archaeological Excavation Report (Niche, March 2020)* concluded:

*The excavation carried out on 26/11/2019 by Joshua Madden (Historic Heritage Team Leader, Niche) proceeded according to the archaeological methodology found in Appendix E, and in response to the possible location of the caretaker's cottage identified in the previous heritage survey undertaken by Niche (Niche 2015).*

*In both trenches, several natural layers were identified, and the remains of what was identified to be a felled tree was noted. No introduced material was discovered, nor any artefacts uncovered. There were therefore no archaeological remains identified in either trench, or nothing to warrant an increase of scope for this excavation. The excavation did confirm that clearing of natural vegetation had been conducted in this area.*

*It can be understood from these results that this location was either not the location of the caretaker's cottage, or that this structure was built of insubstantial materials which have left no archaeological remains.*

In previous versions of this HHMP to satisfy Condition 49(c), Schedule 3 of the Development Consent (SSD-6764), a detailed test and salvage excavation program<sup>4</sup> for the Potential Caretakers Cottage Site (Site 1G) was provided in **Appendix 1**. This salvage program has now been superseded with the completion of the *Wilpinjong Caretakers Cottage Archaeological Excavation Report (Niche, March 2020)* and fulfils the requirements of the ARD.

WCPL commissioned Niche in 2020 to undertake and complete a photographic archival recording of the Wilpinjong Shale Oil Mining Complex Slate Valley (Niche, May 2020) (**Appendix 4**). This photographic recording was undertaken to provide a record of existing structure and surrounds of the built heritage.

A copy of the *Wilpinjong Caretakers Cottage Archaeological Excavation Report (Niche, March 2020)* (**Appendix 1**) and a copy of *Wilpinjong Shale Oil Mining Complex Slate Valley Photographic Archival Recording – (Niche, May 2020)* (**Appendix 4**) will be provided to the Mudgee Historical Society, Mudgee Library and the NSW Heritage Branch Library to fulfil the requirement for archival recording in accordance with Condition 49(c) of Development Consent (SSD-6764).

---

<sup>4</sup> The initial HHMP did not include the Archaeological Research Design (ARD) for the test and salvage excavation required at the potential caretaker's cottage site in Pit 8.



## 4.1.2 Road Embankment (Site 4)

Avoidance of the Road Embankment (**Plate 2**) was considered during detailed design of the TransGrid Wollar to Wellington 330 kV ETL realignment. The section for realignment of the 330kV ETL was completed by in September 2018. There were no recorded impacts to the Road Embankment during the realignment project as a result of WCPL's avoidance management measures.

No further historic heritage assessment is required as a photographic recording of the item has already been completed and provided to the Mudgee Historical Society. WCPL would notify the Mid-Western Regional Council (MWRC) of any unavoidable impacts, prior to impacts occurring.



**Plate 2 Road Embankment (Niche, 2015)**

## 4.1.3 Pine Park (Site 5)

The item (**Plate 3**) is located approximately 1 km outside the Wilpinjong Coal Mine boundary and may experience continued indirect impacts from blasting as a result of the Mine's activities, however no further historical heritage assessment is required as a photographic record has already been produced and provided to the Mudgee Historical Society.



**Plate 3 Pine Park Grain Silo and Shed (Niche, 2015)**



#### 4.1.4 William Carr's Hut (Site 11)

Moolarben Coal Operations Pty Ltd (MCO) has advised WCPL that archival recording of William Carr's Hut (**Plate 4**) has already been undertaken in accordance with MCO's Project Approval (08\_0135). No further management measures are required.



**Plate 4 William Carr's Hut (Niche, 2015)**

## 4.2 Annual Monitoring

Condition 14, Schedule 3 of Development Consent (SSD-6764) requires that the Blast Management Plan “*evaluates and reports on blast vibration and overpressure at the Shale Oil Mine Adit...*”. Monitoring of the Shale Oil Mine Adit site in relation to blasting (i.e. impacts from ground vibration) is outlined in the WCPL Blast Management Plan.

The blast monitoring results for the Shale Oil Mine Adit will be reported by WCPL in the Annual Review.

## 4.3 New Site Recording Protocol

In the event that a previously unidentified historical heritage items (including relics) are discovered during the life of the Mine, the following procedure is to be adopted:

- All works must cease immediately in the area to prevent any further impacts to the site/relics.
- Notify the Environment and Community Manager (ECM) (or relevant equivalent) immediately. The Environment and Community Manager (or relevant equivalent) will determine whether works can continue in the area with safeguards in place.
- Engage a suitably qualified heritage specialist to determine the nature, extent and likely significance of the site/relics.
- Based on the advice of the heritage specialist regarding heritage significance and impact assessment, determine and implement appropriate mitigation measures (e.g. further assessment, excavation, archival recording etc.).
- Depending on the findings of the heritage specialist, notify DPHI and the Environment and Heritage Group of the discovery in accordance with section 146 of the *Heritage Act 1977*.
- Update the Wilpinjong Coal Mine Historic Heritage Site Database (maintained by WCPL) with the relevant information.
- Revise and update the HHMP (if necessary) in accordance with the protocols outlined in **Section 8**. This revision would incorporate any newly identified items and their management, but it is not required to occur prior to the implementation of the agreed management approach.

## 4.4 Protocol for the Management of Human Remains

In the event that operations reveal possible human skeletal remains, the following procedure is to be followed:

- When suspected human remains are exposed, all work is to cease immediately in the near vicinity of the find location.
- The Environment and Community Manager (or relevant equivalent) is to be notified immediately.
- The Environment and Community Manager (or relevant equivalent) will contact the police immediately.
- The Environment and Community Manager (or relevant equivalent) is to contact the Environment and Heritage Group’s Environment line to identify that possible skeletal remains have been discovered and that the police have been notified. Environment and Heritage Group will provide details on the current processes involved in best dealing with archaeological skeletal remains.
- Under the instructions of the Police, the immediate area (approximately 50 metre radius) will be cordoned off by barricading around the exposed human remains site – work can continue outside of this area as long as there is no risk of interference to the human remains or the assessment of human remains.

- A physical or forensic anthropologist would be commissioned by WCPL to inspect the remains in situ (unless otherwise directed by the Police) and make a determination of ancestry (Aboriginal or non- Aboriginal) and antiquity (pre-contact, historic or modern):
  - If the remains are identified as modern, liaise with the Police and/or the Coroner's Office and/or NSW Health with respect to the exhumation of the remains.
  - If the remains are identified as Aboriginal, liaise with Environment and Heritage Group and Aboriginal stakeholders as per the Aboriginal Cultural Heritage Management Plan.
  - If the remains are identified as non-Aboriginal (historic) remains, liaise with Environment and Heritage Group.
  - If the remains are identified as not being human, then work can recommence without delay.

In particular, in the unlikely event that grave cuts, or unusual features including human remains, are identified during excavation in the area of the former St James Church allotment (no historic heritage significance) (**Figure 3-1**) site work will stop immediately in the vicinity and the procedure described above would be implemented.

#### 4.5 Ground Disturbance Permits

A Ground Disturbance Permit (GDP) is required to be completed prior to the commencement of new projects or activities requiring ground disturbance at the Mine. The GDP must be approved by the Environment and Community Manager (or relevant equivalent) prior to works commencing. Ground disturbing activities are not authorised to proceed without an approved GDP. Pre-clearance surveys will be undertaken as required, in accordance with WCPL's Pre-clearance Protocol.

WCPL will not undertake any ground disturbance activities except in accordance with the terms of this HHMP and following the issuing of an internal GDP. Archaeological investigations will only be undertaken by archaeologists qualified and experienced in historic heritage and will occur prior to any development impacts occurring to a specific area or site of identified heritage significance.

Regular inspections will be undertaken by respective project managers and environmental representatives to ensure adequate controls are implemented and maintained during the disturbance activity. Inspection frequency will be determined based on the scale of the disturbance and with consideration to the environmental risks.

Controls may need to be amended to accommodate changes in construction activities, disturbance areas, drainage paths and other conditions. Such changes are to be approved by the Environment and Community Manager (or relevant equivalent).

#### 4.6 Historic Heritage Component of Site Induction

As part of all full site inductions, a historic heritage component will be included. This will outline current protocols and responsibilities with respect to conducting works in the vicinity of and the management of historic heritage items. It will also provide an overview of the historic heritage items present and procedures for reporting the previously unidentified historic heritage items. A register of all persons having completed inductions will be maintained.

WCPL will maintain an accurate record of all employee and contractor inductions in accordance with Condition 49(c), Schedule 3 of Development Consent (SSD-6764).

#### 4.7 Management of Historic Heritage Items in Wollar and Wider Surrounds

In addition to the historic heritage items described elsewhere in this HHMP, it is noted that a number of items of local heritage significance were identified in the Village of Wollar and the broader surrounds. A summary of these items is provided in **Appendix 2**. There would be no impacts caused by the Mine (in particular blasting) to these historic heritage items. However, items that are located on Peabody-owned

land may be subject to demolition in accordance with relevant MWRC approvals (e.g. for workplace health and safety reasons).

In the event that any of these items are proposed to be demolished, WCPL will engage a suitably qualified heritage consultant to conduct an archival recording prior to any disturbance and assess whether further archaeological investigation is warranted. Further, WCPL would seek to offer any salvageable materials from the historic heritage items to the Mudgee Historical Society during the demolition process.

#### **4.7.1 Wollar Churches Archival Recording**

##### **St Luke's Anglican Church Building**

Niche Environment and Heritage Pty Ltd were commissioned by WCPL to undertake a Photographic Historical Archival Recording of St Luke's Anglican Church Building and associated cemetery in January 2020 (**Appendix 5**).

The Church building is no longer consecrated and is currently owned by Peabody. Although no immediate impacts to the church building and cemetery are planned, WCPL completed archival recording of the church building to provide a record of the structure and surrounds of built heritage prior to the commencement of maintenance and restoration works as required by Condition 49(c), Schedule 3 of SSD-6764. The location of the St Luke's Anglican Church is projected on **Figure 4-1**

##### **St Laurence O'Toole Catholic Church Building**

Niche Environment and Heritage Pty Ltd were commissioned by WCPL to undertake a Photographic Historical Archival Recording of St Laurence O'Toole Catholic Church Building and associated cemetery in March 2020 (**Appendix 5**).

The Church building is no longer consecrated and is currently owned by Peabody. Although no immediate impacts to the church building and cemetery are planned, WCPL completed archival recording of the church building to provide a record of the structure and surrounds of built heritage prior to the commencement of maintenance and restoration works as required by Condition 49(c), Schedule 3 of SSD-6764. The location of the St Laurence O'Toole Catholic Church is projected on **Figure 4-1**

Copies of the archival recordings of both the churches have been submitted to the Mudgee Historical Society, Mudgee Library and the NSW Heritage Branch Library.

#### **4.7.2 Wollar Buildings Archival Recording**

Niche Environment and Heritage Pty Ltd were commissioned by WCPL to undertake a Photographic Archival Recording of Historical Items located within the Wollar Township and region in July 2020 (**Appendix 6**).

The sites recorded are owned by Peabody. In accordance with the **Section 4.7** of the HHMP, those buildings identified for demolition are required to be archivally recorded. A photographic recording was undertaken to provide a record of each structure and surrounds of built heritage prior to the commencement of maintenance, demolition and restoration works as required by Condition 49(c), Schedule 3 of SSD-6764. The locations of the historic heritage buildings of Wollar are projected on **Figure 4-1**, identifiers for each building are detailed in **Appendix 2**

Copies of the archival recordings of the buildings archivally recorded have been submitted to the Mudgee Historical Society, Mudgee Library and the NSW Heritage Branch Library.



## 4.7.2.1 Demolition of Wollar Buildings

In consultation with WCPL's Community Consultative Committee (CCC), a program to demolish five dilapidated buildings in Wollar began in 2020, with the commencement of asbestos removal by a licensed specialist from several of the buildings prior to demolition. **Table 4-1** provides a record of buildings demolished in the Wollar Village during December 2020, heritage buildings demolished are identified on **Figure 4-1** with building description documented in **Appendix 2**.




**Table 4-1 Record of Buildings Demolished in Wollar 2020**

Buildings Demolished in Wollar During 2020	
 <p>#18 King House</p>	 <p>#19 Kirkland's Hut</p>
 <p>26 Barigan Street, Wollar Non-Heritage Listed Building</p>	 <p>9 Barnett Street, Wollar Non-Heritage Listed Building</p>
 <p>#21 Slab Hut<sup>1</sup></p>	

**Notes<sup>1</sup>:** Building material items were recycled by a local community member during the removal of the Slab Hut.

During 2021 a further six WCPL owned dilapidated properties were demolished (**Table 4-2**). Updates of the building demolition program of WCPL owned properties in Wollar was provided to the CCC on the 27 October 2021.







**Table 4-2 Record of Buildings Demolished in Wollar 2021**

Buildings Demolished in Wollar During 2021	
 <p>#6 Fitzgerald Street</p>	 <p>#8 Fitzgerald Street</p>
 <p>#26 Barnett Street</p>	 <p>#24 Barnett Street</p>
 <p>#47-49 Barnett Street</p>	 <p>#51-57 Barnett Street</p>



During 2022 a further five WCPL owned dilapidated properties were demolished (**Table 4-3**). Updates of the building demolition program of WCPL owned properties in Wollar was provided to the CCC on the 28 November 2022.

**Table 4-3 Record of Buildings Demolished in Wollar 2022**

Buildings Demolished in Wollar During 2022	
 <p>#2 Bedes Lane</p>	 <p>#3 Fitzgerald Street</p>
 <p>#9 Price Street</p>	 <p>#17 Barigan Street</p>
 <p>#19 Barigan Street</p>	 <p>#19 Barigan Street</p>



During March 2024 a further five WCPL owned dilapidated properties were demolished (**Table 4-4**). Updates of the building demolition program of WCPL owned properties in Wollar was provided to the CCC on the 27 November 2023. A further five WCPL owned dilapidated properties are proposed for demolition in 2024 (**Table 4-5**).

**Table 4-4 Record of Buildings Demolished in March 2024**

Buildings Demolished in Wollar March 2024	
 <p>#1 Bedes Lane</p>	 <p>#4 Maitland Street</p>
 <p>#5 Maitland Street</p>	 <p>#5 Maitland Street</p>
 <p>#7 Parish Lane</p>	

**Table 4-5 Record of Buildings Proposed for Demolition in 2024**






Buildings Proposed for Demolition in 2024	
 <p>#1 5 Barnett Street</p>	 <p>#7 Maitland Street</p>
 <p>#609 Barigan Road</p>	 <p>#1066 Barigan Road (Lot 31)</p>
 <p>#1066 Barigan Road (Lot 9)</p>	





Figure 4-1 Historic Heritage Buildings of Wollar

#### 4.8 Storage of Heritage Items Salvaged

Condition 49(c), Scheduled 3 of Development Consent (SSD-6764) requires a strategy for the storage of heritage items salvaged on site, both during the development and in the long term.

WCPL does not anticipate that the storage of any heritage items will be required at the Mine, however in the event that a previously unidentified historical heritage items (including relics<sup>5</sup>) are discovered during the life of the Mine (**Section 4.3**), they would be offered to the local historic society and/or managed in accordance with recommendations made by a suitably qualified archaeologist at the time of the salvage.

---

<sup>5</sup> If relics are located, their discovery will be reported in accordance with Section 146 of the *Heritage Act, 1977*.

## 5 Measurement and Evaluation

### 5.1 Performance Indicators

In accordance with Condition 3(b), Schedule 5 of Development Consent (SSD-6764), WCPL has proposed a performance indicator to judge the performance of, and guide the implementation of, the management measures discussed within this HHMP. The proposed performance indicator is detailed in **Table 5-1**.

**Table 5-1 Historic Heritage Performance Indicator**

Aspect	Indicator
Incidents and Non-compliances	<ul style="list-style-type: none"> <li>No incidents or non-compliances recorded regarding historic heritage at the Wilpinjong Coal Mine.</li> </ul>

### 5.2 Contingency Plan for Unpredicted Impacts

WCPL has a good understanding of historic heritage surrounding the Mine and has established a comprehensive system to monitor and respond to heritage management issues. In the event that unpredicted impacts occur to non-Aboriginal heritage as a result of mining activities at the Wilpinjong Coal Mine, WCPL will:

- Review the current HHMP (controls and monitoring), to ensure it is effective and criteria is being met;
- Develop and implement additional management or mitigation measures;
- Undertake follow-up inspections to assess the effectiveness of the additional measures; and
- Report any exceedances and non-compliances in accordance with **Section 7.1**.



## 6 Complaints Response Protocol

WCPL operates a Community hotline (**1300 606 625**) for the purpose of receiving complaints from members of the public in relation to mining activities at the Mine. The hotline number is advertised on the WCPL Website.

WCPL has developed a Complaint Response Protocol to reply to community concerns that relate to noise and other matters.

Response to a noise complaint will include:

- Accurately recording all relevant details regarding the complaint in a Complaints Register, including:
  - The date and time of the complaint;
  - The method by which the complaint was made;
  - Any personal details of the complainant which were provided by the complainant or, if no such details were provided, a note to that effect;
  - The nature of the complaint;
  - The action taken by the licensee in relation to the complaint, including any follow-up contact with the complainant; and;
  - If no action was taken by the licensee, the reasons why no action was taken;
- Undertaking investigations into the likely cause of the complaint using relevant information at the time of the complaint;
- Assessing and implementing additional control measures, if required; and
- Monitoring and assessing the effectiveness of the additional controls.

Records of all complaints will be kept for at least four years after the complaint was made. Records will be produced to any authorised officer who asks to see them.

The Complaints Register will be uploaded to the WCPL website and updated monthly.

## 7 Reporting

The following external reporting will be undertaken by WCPL in accordance with the conditions of the Development Consent (SSD-6764), Environmental Protection Licence (EPL) and Mining Leases:

- Incident and Non-Compliance Report;
- Annual Review;
- Independent Environmental Audit;
- EPL Annual Return;
- Access to Information; and
- Website updates.

A copy of this HHMP will be made available to the WCPL Community Consultative Committee (CCC) and MWRC. In addition, a copy will be made available for viewing to members of the public at the Mine and on the WCPL website.

### 7.1 Incident and Non-Compliance Reporting

As defined by SSD-6764 an incident is a set of circumstances that:

- Causes or threatens to cause material harm to the environment; and/or
- Breaches or exceeds the limits or performance measures/criteria in SSD-6764.

WCPL will immediately notify the DPHI and any other relevant agencies of any incident that has caused, or threatens to cause, material harm to the environment, in accordance with the Pollution Incident Response Management Plan (PIRMP).

All other non-compliances will be reported to DPE and any other relevant agencies as soon as practicable. Within seven days of the date of an incident, WCPL will provide a detailed report to the DPE that:

- Describes the date, time, and nature of the incident;
- Identifies the cause (or likely cause) of the incident;
- Describes what action has been taken to date; and
- Describes the proposed measures to address the incident.

### 7.2 Annual Review

At the end of March each year, WCPL will review the cultural heritage performance as part of the environmental performance of the Mine and submit an Annual Review report to the DPHI. This report will:

- a) Describe the development (including any rehabilitation) that was carried out in the past year, and the development that is proposed to be carried out over the next year;
- b) Include a comprehensive review of the rock art monitoring results and cultural heritage complaints records of the Mine over the past year, which includes a comparison of these results against the:
  - Relevant statutory requirements, limits or performance measures/criteria;
  - Monitoring results of previous years; and
  - Relevant predictions in the EIS.

- c) Identify any non-compliance over the last year, and describe what actions were (or are being) taken to ensure compliance;
- d) Identify any trends in the rock art monitoring data over the life of the Mine;
- e) Identify any discrepancies between the predicted and actual impacts of the Mine, and analyse the potential cause of any significant discrepancies; and
- f) Describe what measures will be implemented over the next year to improve the environmental performance of the Mine.

*Note: The "Post Approval Requirements for State Significant Developments - Annual Review Guideline 2015, NSW Government, October 2015" (or its latest version) provides a reporting framework to integrate the reporting requirements of the Annual Review required by the Department under the development consent and the Annual Environment Management Report (AEMR) required under the Mining Lease.*

A copy of the Annual Review will be made publicly available on the WCPL website and provided to DPHI, in accordance with relevant Mining Leases (ML) conditions.

### **7.3 Independent Environmental Audit**

Within a year of commencing development under the Development Consent (SSD-6764), and every three years thereafter, unless the Secretary directs otherwise, WCPL will commission an Independent Environmental Audit (IEA) of the Mine. This audit will:

- a) Be conducted by a suitably qualified lead auditor and suitably qualified, experienced and independent team of experts in any field specified by the Secretary, whose appointment has been endorsed by the secretary;
- b) Include consultation with the relevant agencies;
- c) Assess the environmental performance of the development and assess whether it is complying with the requirements in the Development Consent and any relevant EPL or ML (including any assessment, plan or program required under these approvals);
- d) Review the adequacy of strategies, plans or programs required under the abovementioned approvals;
- e) Recommend appropriate measures or actions to improve the environmental performance of the development, and/or any strategy, plan or program required under the abovementioned approvals; and
- f) Be conducted and reported the satisfaction of the Secretary.

*Note: The "Post Approval Requirements for State Significant Developments - Independent Audit Guideline, NSW Government, October 2015" (or its latest version) provides an audit and reporting framework for the independent audit that will guide compliance with this condition.*

Within three months of commissioning this audit, or as otherwise agreed by the Secretary, WCPL will submit a copy of the audit report to the Secretary, together with its response to any recommendation contained in the audit report, and a timetable for the implementation of these recommendations as required. WCPL will implement these recommendations, to the satisfaction of the Secretary.

A copy of the audit report (and WCPL's response to any recommendations) will be made publicly available on the WCPL website.

## 7.4 Access to Information

A comprehensive summary of historic heritage monitoring results will be made publicly available at the Mine and on its website and will be updated every three months.

WCPL will also ensure that any information relevant to historic heritage management is uploaded to the website (and kept up to date). This includes:

(a) Make copies of the following information publicly available on its website:

- the EIS (*Environmental Impact Statement titled Wilpinjong Extension Project*);
- current statutory approvals for the development;
- approved strategies, plans or programs required under the conditions of this consent;
- a comprehensive summary of the monitoring results of the development, reported in accordance with the specifications in any conditions of this consent, or any approved plans
  - and programs;
- a complaints register, which is to be updated monthly;
- minutes of CCC meetings;
- the last five annual reviews;
- any independent environmental audit, and the Applicant's response to the recommendations in any audit;
- any other matter required by the Secretary;

(b) keep this information up to date

WCPL must provide regular reporting on the environmental performance of the development on its website, in accordance with the reporting arrangements in any plans or programs approved under the conditions of SSD-6764. Results of WCPL's blast monitoring program will be provided to WCPL's Community Consultation Committee (CCC) during each meeting.

## 8 Review and Improvement

WCPL, through the ECM (or delegate) will review and, if necessary, revise this ACHMP within three months of the submission of:

- The Annual Review;
- An incident report;
- An Independent Environmental Audit; and
- Any modification to Development Consent (SSD-6764),

WCPL will review, and if necessary revise, this HHMP (and its appendices).

WCPL will also review, and if necessary revise, this HHMP in response to a relevant and material change in technology, legislation, or operations.

WCPL will comply with any reasonable requirement/s of the Secretary arising from the Department's assessment of:

- Any reports, strategies, plans, programs, reviews, audits or correspondence that are submitted in accordance with Development Consent (SSD-6764); and
- The implementation of any actions or measures contained in these documents.

Where amendments to this HHMP are made as a result of the review process, WCPL will submit the revised HHMP to the DPHI for approval within four weeks.

### 8.1 Updating Plans

To ensure the strategies, plans and programs are updated on a regular basis, and incorporate any recommended measures to improve the environmental performance of the development, WCPL may submit revised strategies, plans or programs required under SSD-6764 at any time. With the agreement of the Secretary, WCPL may also submit any strategy, plan or program required by SSD-6764 on a staged basis. The Secretary may approve a revised strategy, plan or program required under SSD-6764, or the staged submission of any of these documents, at any time. With the agreement of the Secretary, WCPL may prepare the revised or staged strategy, plan or program without undertaking consultation with all parties nominated under the applicable condition in SSD-6764.

**Notes:** While any strategy, plan or program may be submitted on a progressive basis, WCPL will need to ensure that the existing operations on site are covered by suitable strategies, plans or programs at all times. If the submission of any strategy, plan or program is to be staged, then the relevant strategy, plan or program must clearly describe the specific stage to which the strategy, plan or program applies, the relationship of this stage to any future stages, and the trigger for updating the strategy, plan or program. For the avoidance of doubt, existing approved management plans, strategies or monitoring programs for the Wilpinjong Coal Project will continue to apply until the approval of a similar plan, strategy or program under SSD-6764 (see condition 9 of schedule 2).

## 9 Responsibilities

Responsibilities in relation to the HHMP are provided in **Table 9-1**.

**Table 9-1 Historic Heritage Management Plan Responsibilities**

Responsibility	Task	Timing
<b>General/ Mine Manager</b>	Ensure that adequate resources are available to effectively implement requirements of this HHMP	Ongoing and during budget planning
<b>Environment and Community Manager</b>	Engage suitably qualified experts to prepare and review this HHMP	As required
	Undertake stakeholder consultation for this HHMP	As required
	Notify DPHI and Environment and Heritage Group of any historic heritage related incidents	Immediately (for incidents that have caused or threaten to cause material harm to the environment) or as soon as practicable (for any other non-compliance)
	Ensure that all historic heritage related complaints are responded to in accordance with the Complaints Response Protocol	Following a complaint
	Ensure that all auditing and regulatory reporting is undertaken in relation to this HHMP	As required
	Coordinate relevant reviews of this HHMP	As required
	Ensure that all employees and contractors are given adequate training in environmental awareness, legal responsibilities, and historic heritage-related control methods	Within 3 months of approval of this HHMP, and as required
	Liaise with the environmental management teams at the Moolarben and Ulan Coal mines to minimise cumulative impacts of the Wilpinjong Coal Mine on the surrounding area	On-going
<b>Environmental Representative</b>	Prepare all statutory reports relating to this HHMP	As required
	Report on Continuous Improvement opportunities in the Annual Review when identified	Annually (Annual Review)
	Update the WCPL website	As required
<b>Maintenance Manager</b>	Maintain all machinery and plant used on site in a proper and efficient condition	As required
<b>All employees and contractors</b>	Operate all machinery and plant used on site in a proper and efficient manner	As required

## 10 References

Australian International Council on Monuments and Sites (2013) *Burra Charter*.

EMGA Mitchell McLennan (2013) *Historic heritage Impact Assessment Moolarben Coal Project Stage 1. Optimisation Modification*. Report for Moolarben Coal Project.

Heritage Management Consultants (2004) *Wilpinjong Coal Project – Non-Aboriginal Heritage Impact Assessment*. Prepared for Wilpinjong Coal Project.

Heritas Architecture (2008) *Stage 2 Moolarben Coal Project, Ulan, NSW. European Heritage Assessment*. Report for Moolarben Coal Project.

Niche Environment and Heritage (2015) *Wilpinjong Extension Project Historical Heritage Assessment*.

NSW Heritage Office and NSW Department of Urban Affairs and Planning (1996) *NSW Heritage Manual*.

Office of Environment and Heritage (1996) *Statement of Heritage Impact*.

Office of Environment and Heritage – Heritage Branch (2006) *Photographic Recording of Heritage Items Using Film or Digital Capture*.

Veritas Archaeology and History Service (2005) *Moolarben Coal Project Non-Aboriginal Heritage Assessment*. Prepared for Moolarben Coal Project.

Niche Environment and Heritage (March 2020) *Wilpinjong Caretakers Cottage Archaeological Excavation Report*

Niche Environment and Heritage (May 2020) *Wilpinjong Shale Oil Mining Complex Slate Valley Photographic Archival Recording*

WCPL 2023 *Wilpinjong Coal Mine – Onsite Accommodation Facility and Development Application Area Modification (Modification 2) Modification Report*

WCPL 2024 *WILPINJONG COAL MINE (SSD-6764) – CENTRAL-WEST ORANA RENEWABLE ENERGY ZONE TRANSMISSION PROJECT MODIFICATION (MOD 4) – MODIFICATION REPORT*



## **APPENDIX 1**

### **WILPINJONG CARETAKERS COTTAGE ARCHAEOLOGICAL EXCAVATION REPORT**

## **APPENDIX 2**

### **HISTORIC HERITAGE ITEMS IN WOLLAR AND SURROUNDS**

### Historic Heritage Items in Wollar and Surrounds

Site Number <sup>1</sup>	Historic Heritage Site	Description <sup>2</sup>	Easting (Zone 56 GDA)	Northing (Zone 56 GDA)
2	Archer's Cottage Ruins (Plate A2-1)	The site is comprised of an orchard, a stockyard and the ruins of a cottage.	768791	6422807
6	Mara Cottage Ruin, Castle View (Plate A2-2)	There is no structural evidence of the house, but fragments of brick and stone are scattered across the site.	772009	6416085
7	Barton's Cottage Ruin, Binngarra (Plate A2-3)	The main feature is an in situ sandstone fireplace and chimney.	769543	6414369
8	Hillview (Plate A2-4)	The sandstone shed is constructed of stone and mortar with a corrugated iron gabled roof. All that remains of the house is the concrete floor and remnant brick rendered walls.	769588	6414747
10	Wandoona, Wollar (Plate A2-5)	The sandstone Wandoona Homestead is situated on the top of a rise with commanding views. Constructed in three stages, the Homestead consists of a Victorian Georgian style main house, a separate sandstone kitchen and a Queen Anne style gabled roof room, built between the two earlier buildings linking them together.	777390	6414447
12	St Laurence O'Toole Catholic Church, Wollar (Plate A2-6)	Gothic style sandstone church.	777323	6415739
13	Former Mason's Store (Plate A2-7)	Originally used as a store. Timber building with a corrugated iron roof.	777547	6415655
14	St Luke's Anglican Church and Cemetery, Wollar (Plate A2-8)	1914 sandstone church with Romanesque influence, cemetery is located behind the church with sandstone headstones.	777652	6415377
15	Wollar Cemetery (Plate A2-9)	Situated to the north-west of Wollar, there are 250 known graves at this cemetery.	777212	6416587
16	Former Butcher and Garage, Wollar (Plate A2-10)	Two semi-detached cottages constructed of weatherboard each with a corrugated iron roof. Formerly a butcher and garage.	777506	6415668
17	Lynch's House, Wollar (Plate A2-11)	Federation timber bungalow with a corrugated iron gable roof, c1890-1915.	777446	6415673
18	King's House, Wollar (Plate A2-12)	Victorian Georgian timber cottage with a corrugated iron hipped roof, c1890.	777555	6415890
19	Kirkland's Hut, Wollar (Plate A2-13)	Originally of slab construction, c1880-1890, clad with fibro c1960s.	777573	6415914
20	Old General Store, Wollar (Plate A2-14)	The Old General Store comprises of two semi-detached buildings originally constructed of timber, with corrugated iron gabled roof and skillion veranda awning.	777630	6415772
21	Slab Hut, Wollar (Plate A2-15)	Timber slab constructed hut with a corrugated iron pyramidal roof.	777583	6416116
22	Wollar School, Wollar (Plate A2-16)	Weatherboard building with a corrugated iron gable roof.	777557	6416181
23	Former Police Station, Wollar (Plate A2-17)	The Former Police Station is a 1936 inter-war Georgian Revival weatherboard building with a corrugated iron hipped roof.	777679	6416052

Source: after Niche (2015).

<sup>1</sup> The site number correlates with the numbers presented in Niche (2015).

<sup>2</sup> A detailed description of each site is provided in Niche (2015).



**Plate A2-1 Archer's Cottage Ruins (Niche, 2015)**



**Plate A2-4 Hillview (Niche, 2015)**



**Plate A2-2 Mara Cottage Ruin, Castle View (Niche, 2015)**



**Plate A2-5 Wandoona, Wollar (Niche, 2015)**



**Plate A2-3 Barton's Cottage Ruin, Binngarra (Niche, 2015)**



**Plate A2-6 St Laurence O'Toole Catholic Church, Wollar (Niche, 2015)**





**Plate A2-7 Former Mason's Store (Niche, 2015)**



**Plate A2-10 Former Butcher and Garage, Wollar (Niche, 2015)**



**Plate A2-8 St Luke's Anglican Church and Cemetery (Niche, 2015)**



**Plate A2-11 Lynch's House, Wollar (Niche, 2015)**



**Plate A2-9 Wollar Cemetery (Niche, 2015)**



**Plate A2-12 King's House, Wollar (Niche, 2015)**





**Plate A2-13 Kirkland's Hut, Wollar (Niche, 2015)**



**Plate A2-16 Wollar School, Wollar (Niche, 2015)**



**Plate A2-14 Old General Store, Wollar (Niche, 2015)**



**Plate A2-17 Former Police Station, Wollar (Niche, 2015)**



**Plate A2-15 Slab Hut, Wollar (Niche, 2015)**

**APPENDIX 3**

**MANAGEMENT PLAN CONSULTATION**

Kieren Bennetts  
Manager Environment & Community  
Wilpinjong Coal Pty Ltd  
1434 Ulan-Wollar Road  
Wilpinjong, NSW, 2850

29/01/2025

---

Subject: Wilpinjong Extension Project (SSD-6764) - Historic Heritage Management Plan

Dear Mr Bennetts

I refer to your request for review and approval of the revised Historic Heritage Management Plan for the Wilpinjong Extension Project (SSD-6764).

The Department has carefully reviewed the document and is satisfied that it meets the requirements of the relevant conditions of consent.

Accordingly, as nominee of the Planning Secretary, I approve the Historic Heritage Management Plan (Version 7, dated September 2024) under Schedule 3, Condition 49.

Please ensure you make the document publicly available on the project website at the earliest convenience.

If you wish to discuss the matter further, please contact Vince Di Bono on 02 8217 2089.

Yours sincerely



Gen Lucas  
Team Leader  
Resource Assessments

As nominee of the Planning Secretary



Department of Climate Change, Energy, the Environment and Water

Our ref: HMS ID 7385

Kieren Bennetts  
Peabody Energy  
[kbennetts@peabodyenergy.com](mailto:kbennetts@peabodyenergy.com)

Letter uploaded to the Major Projects Planning Portal

---

**Advice on Environmental Impact Statement – Wilpinjong Coal 2 – SSD-6764-PA-109**

Dear Mr Bennetts,

Thank you for your referral dated 30/09/2024 inviting comments from the Heritage Council of NSW on the above State Significant Development (SSD – 6764-PA-109) proposal.

The subject site is not listed on the State Heritage Register (SHR), nor is it in the immediate vicinity of any SHR items. Further, the site does not contain any known historical archaeological relics. Therefore, no heritage comments are required. The Department does not need to refer subsequent stages of this proposal to the Heritage Council of NSW.

If you have any questions about this correspondence, please contact Kelly Pleasance, Senior Customer Service Officer at Heritage NSW on (02) 9873 8500 or [heritagemailbox@environment.nsw.gov.au](mailto:heritagemailbox@environment.nsw.gov.au).

Yours sincerely

*Nicole Davis*

Nicole Davis

Strategic Manager – Major Projects

Heritage NSW

Department of Climate Change, Energy, the Environment and Water

As Delegate of the Heritage Council of NSW

1 October 2024



**MID-WESTERN REGIONAL COUNCIL**

PO Box 156, MUDGEE NSW 2850  
86 Market Street, Mudgee | 109 Herbert Street, Gulgong | 77 Louee Street, Rylstone  
T 1300 765 002 or 02 6378 2850 | F 02 6378 2815  
E [council@midwestern.nsw.gov.au](mailto:council@midwestern.nsw.gov.au)

15 October 2024

Kieren Bennetts  
Peabody Energy  
[kbennetts@peabodyenergy.com](mailto:kbennetts@peabodyenergy.com)

Dear Kieren.

**SUBJECT: Wilpinjong Coal Mine Extension WCPL EMP's - Historic Heritage Management Plan - PAE-76392208**

Thank you for providing Mid-Western Regional Council with the opportunity to review Version 7 of the Historic Heritage Management Plan documents associated with the Wilpinjong Coal Mine extension.

Council has reviewed the associated report and would like to advise that it has no formal submission or comments to note.

Yours faithfully,

A handwritten signature in black ink, appearing to read 'Lindsay Dunstan', written over a faint, light-colored background.

LINDSAY DUNSTAN  
MANAGER STATUTORY PLANNING  
MID-WESTERN REGIONAL COUNCIL

Department of Planning and Environment



Our ref: SSD-6467-PA-65

Mr Ian Flood  
Manager Project Development and Approvals  
Wilpinjong Coal Pty Ltd

By email: [iflood@peabodyenergy.com](mailto:iflood@peabodyenergy.com)

06/02/2023

---

**Subject: Wilpinjong Coal Extension Project (SSD 6467) - Approval of Historic Heritage Management Plan**

Dear Mr Flood

I refer to the Historic Heritage Management Plan submitted in accordance with Condition 49 of Schedule 3 of the above development consent.

I understand this plan has been updated to include record of the demolition of six Wilpinjong Coal-owned dilapidated buildings in Wollar.

The Department has carefully reviewed the document and is satisfied that it meets the requirements of the relevant conditions in consent. Accordingly, the Secretary, has approved the plan (version 6, dated June 2022).

You are reminded that if there are any inconsistencies between the plan and the conditions of consent, the conditions prevail.

Please ensure you make the document publicly available on the project website at the earliest convenience.

If you wish to discuss the matter further, please contact Gen Lucas on (02) 9274 6489 or [gen.lucas@planning.nsw.gov.au](mailto:gen.lucas@planning.nsw.gov.au).

Yours sincerely

Stephen O'Donoghue  
Director  
Resource Assessments  
As nominee of the Planning Secretary



Our ref: DOC21/530682

Kieren Bennetts  
Peabody Energy Australia Pty Ltd  
Email: [kbennetts@peabodyenergy.com](mailto:kbennetts@peabodyenergy.com)

Dear Mr Bennetts

**Post Approval Submission for comment for Wilpinjong Coal Mine (SSD 6764)**

Thank you for your referral received on 30<sup>th</sup> June 2021 inviting comments from the Heritage Council of NSW on the above State Significant Development (SSD) application to address Condition 49b, Schedule 3 in accordance with Condition 5(a), Schedule 5 of the SSD consent.

Heritage NSW has reviewed the documents supporting the referral, and as delegate of the Heritage Council of NSW I am satisfied that they meet the requirements of Condition 49b, Schedule 3 of SSD 6764.

If you have any questions regarding the above matter please contact Dr Hana Lewis, Senior Historical Archaeology Officer, at Heritage NSW on (02) 9585 6323 or by email at [hana.lewis@environment.nsw.gov.au](mailto:hana.lewis@environment.nsw.gov.au).

Yours sincerely

*F. Barry*

**Felicity Barry**  
A/Senior Team Leader, Specialist Services  
Heritage NSW  
Department of Premier and Cabinet  
**As Delegate of the Heritage Council of NSW**  
16 September 2021





Mr Ian Flood  
Manager – Project Development and Approvals  
Peabody Australia  
1434 Ulan-Wollar Road  
WILPINJONG NSW 2850

Via email: [iflood@peabodyenergy.com](mailto:iflood@peabodyenergy.com)

Dear Mr Flood

**Wilpinjong Coal Mine (SSD-6764)  
Management Plan Review**

I refer to your emails dated 27 September 2019 and 17 April 2020 submitting revised management plans for the Wilpinjong Coal Mine (SSD-6764), including the:

- Aboriginal and Cultural Heritage Management Plan (condition 47 of Schedule 3, version 6 dated September 2019);
- Air Quality Management Plan (condition 20 of Schedule 3, version 5 dated September 2019);
- Biodiversity Management Plan (condition 42 of Schedule 3, version 6 dated September 2019);
- Blast Management Plan (condition 14 of Schedule 3, version 6 dated September 2019);
- Environmental Management Strategy (condition 1 of Schedule 5, version 6 dated September 2019);
- Historical Heritage Management Plan (condition 49 of Schedule 3, version 3 dated September 2019); and
- Noise Management Plan (condition 5 of Schedule 3, version 4 dated September 2019).

The Department has reviewed the above plans and is satisfied that they meet the requirements of the relevant conditions of consent. Accordingly, the Secretary has approved these plans.

I also refer to the revised Water Management Plan which was submitted on 17 April 2020. The Department notes that substantial changes have been made to the site water balance component of this plan.

As such, the Department requests that this plan be submitted through the Major Projects portal for review by the Department and relevant agencies.

If you have any questions, please contact Jack Turner on 02 9995 5387 or [Jack.Turner@planning.nsw.gov.au](mailto:Jack.Turner@planning.nsw.gov.au)

Yours sincerely

A handwritten signature in black ink, appearing to be 'SOD'.

19/6/20

Stephen O'Donoghue  
**Director**  
**Resource Assessments**  
as nominee of the Secretary



## Planning & Environment

### Resource and Energy Assessments

Contact: Stephen Shoesmith  
Phone: (02) 9274 6164  
Email: [stephen.shoesmith@planning.nsw.gov.au](mailto:stephen.shoesmith@planning.nsw.gov.au)

Mr Ian Flood  
Manager, Project Development and Approvals  
Wilpinjong Coal Mine

Via Email to: [iflood@peabodyenergy.com](mailto:iflood@peabodyenergy.com)

Dear Mr Flood

**Wilpinjong Coal Mine (SSD\_6764)  
Approval – Historic Heritage Management Plan**


I refer to your email dated 20 December 2017, seeking the Secretary's review and approval of the Historic Heritage Management Plan (HHMP) for the Wilpinjong Coal Mine (SSD\_6764).

The Department has reviewed the HHMP, dated December 2017, and is satisfied that it addresses the requirements of Condition 49, Schedule 3 of the Wilpinjong Development Consent (SSD\_6764.)

Accordingly, the Secretary approves the revised Historic Heritage Management Plan. Please ensure that a copy of the approved plan is placed on your website as soon as possible.

If you require further information, please contact Stephen Shoesmith on (02) 9274 6164 or by email to [stephen.shoesmith@planning.nsw.gov.au](mailto:stephen.shoesmith@planning.nsw.gov.au).

Yours sincerely



12/7/18

Steve O'Donoghue  
**A/Director**  
**Resource and Energy Assessments**  
as nominee of the Secretary

**Department of Planning & Environment**

Level 22, 320 Pitt Street Sydney NSW 2000 | GPO Box 39 Sydney NSW 2001 | [www.planning.nsw.gov.au](http://www.planning.nsw.gov.au)



**Resource Assessments**

Contact: Stephen Shoesmith  
Phone: 9274 6164  
Email: [stephen.shoesmith@planning.nsw.gov.au](mailto:stephen.shoesmith@planning.nsw.gov.au)

Mr Ian Flood  
Manager Project Development & Approvals –  
Peabody Energy  
Wilpinjong Extension Project

By email to: [IFlood@peabodyenergy.com](mailto:IFlood@peabodyenergy.com)

Dear Mr Flood

**Wilpinjong Extension Project (SSD-6764)  
Approval of Environmental Management Plans**

I refer to the management plans submitted to the Department, seeking the Secretary's review and approval for the Wilpinjong Extension Project (WEP).

The Department has completed a detailed review of the management plans, which were subsequently revised to address the Department's comments including the:

- Noise Management Plan (Version 3, dated August 2017);
- Air Quality Management Plan (Version 3, dated August 2017);
- Blast Management Plan (Version 3, dated August 2017);
- Historic Heritage Management Plan (Version 3, dated August 2017);
- Aboriginal Cultural Heritage Management Plan (Version 3, dated August 2017);
- Biodiversity Management Plan (Version 3, dated August 2017); and
- Environmental Management Strategy (Version 3, dated August 2017).

As part of its review, the Department also considered Peabody's request to submit the Historic Heritage Management Plan on a staged basis in accordance with Condition 6, Schedule 5 of the WEP Development Consent (SSD-9794).

The Department is satisfied that the proposed staging of the Historic Heritage Management Plan, as described in Section 1.4 of the HHMP, is reasonable and that the plans have been prepared in consultation with the relevant agencies and address the requirements of Conditions 5, 14, 20, 42, 47 and 49, in Schedule 2 and Condition 1, in Schedule 5 of SSD-9794. Accordingly, the Secretary approves the revised management plans.

Please ensure that all new monitoring sites proposed for the WEP, where establishment dates have not been nominated with the respective management plan are established within 60 days of the date of this letter and that a copy of the approved plans is placed on your website as soon as possible following the commencement of the WEP.

If you require further information, please contact Stephen Shoesmith on 9274 6164

Yours sincerely

Steve O'Donoghue  
**A/Director**  
**Resource and Energy Assessments**  
As nominee of the Secretary

**Department of Planning & Environment**

Level 22, 320 Pitt Street Sydney NSW 2000 | GPO Box 39 Sydney NSW 2001 | [www.planning.nsw.gov.au](http://www.planning.nsw.gov.au)

## **APPENDIX 4**

### **WILPINJONG SHALE OIL MINING COMPLEX SLATE VALLEY PHOTOGRAPHIC ARCHIVAL RECORDING**



**APPENDIX 5**  
**WOLLAR CHURCHES ARCHIVAL RECORDING**

**APPENDIX 6**  
**WOLLAR BUILDINGS ARCHIVAL RECORDING**