

**APPENDIX 3**  
**WILPINJONG COAL**  
**SPONTANEOUS COMBUSTION MANAGEMENT PLAN**

WI-ENV-MNP-0010

June 2022

Document Owner		Document Approver			
Environmental Representative		Environment and Community Manager			
Version	Approval Date	Approver Name			
8.1	June 2022	Kieren Bennetts			
General Description of Changes from Previous Version					
Document No.	Version	Date	Prepared/Reviewed By	Distribution	Description of Change
WI-ENV-MNP-0010	1	December 2014	Palaris, WCPL	DP&E	New management plan to meet Condition 57A, Schedule 3 of Project Approval 05-0021 (Mod 6)
WI-ENV-MNP-0010	2	May 2015	WCPL	DP&E	Amended to address DP&E comments
WI-ENV-MNP-0010	3	October 2016	WCPL	DP&E	MOD 7
WI-ENV-MNP-0010	4	June 2017	WCPL	DP&E	Revision of AQMP to align with SSD-6764 as a result of the WEP.
WI-ENV-MNP-0010	5	September 2019	WCPL	DP&E	Revision of AQMP as required by IEA and AR and revised disturbance footprint boundary in Pit 8
WI-ENV-MNP-0010	6	August 2020	WCPL	DPIE	Revision of Figure 3
WI-ENV-MNP-0010	7.1	June 2021	WCPL	DPIE	Revision included revised disturbance footprint boundary in Pit 6
WI-ENV-MNP-0010	8.1	June 2021	WCPL	DPE	Revision included recommendations from 2021 IEA to add corrective actions to inspection program and review the frequency of the aerial thermal imagery inspection program. Updated Figure 3 regarding areas of risk. Address DPE responses post consultation.

## Contents

<b>1</b>	<b>Introduction</b> .....	<b>1</b>
1.1	Definitions .....	1
1.2	Purpose .....	2
1.3	Scope.....	3
1.4	Consultation.....	3
<b>2</b>	<b>Statutory Requirements</b> .....	<b>4</b>
2.1	Development Consent (SSD-6764) Requirements for SCMP .....	4
<b>3</b>	<b>Baseline Data and Background Information</b> .....	<b>5</b>
3.1	Spontaneous Combustion Mechanism.....	5
3.2	Material Prone to Spontaneous Combustion.....	6
3.3	Material Classifications .....	6
3.4	Benchmarking Study .....	8
<b>4</b>	<b>Risk Assessment</b> .....	<b>9</b>
4.1	Areas at Risk of Spontaneous Combustion.....	9
<b>5</b>	<b>Performance Indicators</b> .....	<b>11</b>
<b>6</b>	<b>Preventative Management and Control Measures</b> .....	<b>12</b>
6.1	Mine Planning.....	12
6.2	Spontaneous Combustion Propensity Testing .....	13
6.3	Risk Identification and Assessment.....	13
6.4	Identification of Potential Hot Spots .....	13
6.5	Air Quality Management Plan.....	14
6.6	Stakeholder Engagement .....	14
6.7	Training and Education.....	14
<b>7</b>	<b>Inspections and Monitoring</b> .....	<b>15</b>
7.1	Spontaneous Combustion Inspection Program.....	15
7.2	Weekly Stockpile Plan .....	16
7.3	Rehabilitation Monitoring .....	17
<b>8</b>	<b>Response to Spontaneous Combustion Events</b> .....	<b>18</b>
8.1	Hazard/Incident Response .....	18
8.2	Corrective Actions .....	20
<b>9</b>	<b>Contingency Plan to Manage Unpredicted Impacts</b> .....	<b>21</b>
<b>10</b>	<b>Complaints Response Protocol</b> .....	<b>21</b>
<b>11</b>	<b>Reporting</b> .....	<b>21</b>
11.1	Incident and Non-Compliance Reporting .....	21
11.2	Annual Review.....	21
11.3	Independent Environmental Audit .....	21
11.4	EPL Reporting .....	22
11.5	Website Updates .....	22

<b>12</b>	<b>Review .....</b>	<b>22</b>
<b>13</b>	<b>Responsibilities .....</b>	<b>22</b>
<b>14</b>	<b>References .....</b>	<b>24</b>
<b>15</b>	<b>Appendices .....</b>	<b>25</b>
15.1	Appendix 1: Spontaneous Combustion Management Plan Requirements .....	25
15.2	Appendix 2: DPE Approval Pit 6 Development Footprint .....	27
15.3	Appendix 3: Correspondence .....	30
15.4	Appendix 4: Propensity for Spontaneous Combustion (Lab Results) .....	37
15.5	Appendix 5: Risk Assessment Outcomes .....	40
15.6	Appendix 6: Air Assessment Criteria .....	46

**Tables**

Table 1	Explanation of Acronyms and Terms.....	1
Table 2	WCPL’s Statutory Approvals .....	4
Table 3	Summary of Spontaneous Combustion Assessments – Wilpinjong.....	7

**Figures**

Figure 1	Fire Triangle (Coaltech, undated).....	5
Figure 2	Stratigraphy of Wilpinjong Coal Mine .....	7
Figure 3	Areas at Risk of Spontaneous Combustion.....	10
Figure 4	Exert from Weekly Stockpile Plan .....	17
Figure 5	WCPL Response to Spontaneous Combustion Events .....	19

# 1 Introduction

This Spontaneous Combustion Management Plan (SCMP) has been prepared to satisfy the relevant conditions in Development Consent (SSD-6764) as they relate to the management of spontaneous combustion. The SCMP now forms Appendix 3 of the Air Quality Management Plan (AQMP) and therefore must be read in conjunction with the AQMP.

Where relevant, this SCMP builds on the relevant components of the existing/approved SCMP (**Appendix 3**), including previous feedback from relevant government stakeholders. This SCMP was also reviewed by Torodoski Air Sciences.

## 1.1 Definitions

**Table 1** provides a list of definitions for particular terms and acronyms used throughout this Management Plan.

**Table 1 Explanation of Acronyms and Terms**

Acronym / Phrase	Explanation
<b>AQMP/S</b>	Air Quality Management Plan/System
<b>Carbonaceous material</b>	Means rock material with a carbon content sufficient to colour the rock dark grey to black and where a risk of self heating may be present
<b>CCC</b>	Community Consultative Committee
<b>CHPP</b>	Coal Handling and Preparation Plant
<b>Development Consent (SSD-6764)</b>	Number SSD-6764 granted by the Minister for Planning under Part 4 of the EP&A Act on 24 April 2017
<b>DPE</b>	NSW Department of Planning and Environment
<b>DPIE</b>	Department of Planning, Industry and Environment (now DPE)
<b>DRE</b>	Division of Resources and Energy within the Department of Trade and Investment, Regional Infrastructure and Services
<b>ECM</b>	WCPL Environment and Community Manager
<b>EPA</b>	NSW Environment Protection Authority
<b>EPL</b>	Environment Protection Licence 12425 granted by the EPA under the <i>Protection of the Environment Operations Act 1997</i> (POEO Act).
<b>ER</b>	Environmental Representative
<b>FSL</b>	Final Surface Level
<b>H<sub>2</sub>S</b>	Hydrogen Sulfide
<b>IEA</b>	Independent Environmental Audit
<b>Inert material</b>	Mineral material free of carbonaceous content and low geochemical reactivity. Generally highly weathered materials such as clays.
<b>LOM</b>	Life of Mine
<b>Management Plan</b>	This Spontaneous Combustion Management Plan prepared by WCPL and as amended from time to time.
<b>Mod</b>	Modification to Project Approval 05_0021
<b>MOP</b>	WCPL Mining Operations Plan (current approved version)
<b>POEO(G) Regulation</b>	means the <i>Protection of the Environment Operations (General) Regulation 2009</i>
<b>Pollution</b>	As defined by the POEO Act, means water pollution or air pollution or noise pollution or land pollution.
<b>Pollution Incident</b>	As defined by the POEO Act, means an incident or set of circumstances during or as a consequence of which there is or is likely to be a leak, spill or other escape or deposit of a substance, as a result of which pollution has occurred, is occurring or is likely to occur. It includes an incident or set of circumstances in which a substance has been placed or disposed of on premises, but it does not include an incident or set of circumstances involving only the emission of any noise.
<b>PIRMP</b>	Pollution Incident Response Management Plan
<b>NOx</b>	Oxides of Nitrogen

Acronym / Phrase	Explanation
<b>OCE</b>	Open Cut Examiner
<b>OOPD</b>	Out of Pit Dump
<b>PAHs</b>	Polycyclic Aromatic Hydrocarbons
<b>Project Approval</b>	Project Approval (05-0021) granted by the Minister for Planning under Part 3A of the EP&A Act on 1 February 2006 (as amended).
<b>Reject disposal area</b>	Means coal waste material from the CHPP including coarse reject and belt filter press wastes. This material is to be managed in accordance with the Waste Management Plan.
<b>ROM</b>	Run of Mine
<b>SLT</b>	Senior Leadership Team
<b>SO<sub>2</sub></b>	Sulfur Dioxide
<b>Spontaneous Combustion</b>	The process by which carbonaceous material such as coal or coal rich rock ignites without an external heat source.
<b>Spontaneous Combustion event</b>	Refers to a single episode of spontaneous combustion in a specific area e.g. on the product stockpile. Events can be minor (less than 50m <sup>2</sup> affected, small amounts of smoke, mild sulphurous odour (onsite), no flames and possible safety hazard) or significant (greater than 50m <sup>2</sup> affected, large amounts of smoke and/or steam, strong sulphurous odour (onsite & offsite), may be open flames, PIRMP initiated, safety hazard)
<b>Spontaneous Combustion Hazard</b>	Refers to a spontaneous combustion event that is minor in nature (i.e. may be less than 50m <sup>2</sup> affected and/or, small amounts of smoke may be present, and/or mild sulphurous odour (onsite), no flames present and possible safety hazard and can be addressed through corrective action (<5 days). A hazard report must be filled out by the OCE or CHPP Shift Supervisor for these events.
<b>Spontaneous Combustion Incident</b>	Refers to a spontaneous combustion event that is significant in nature (may be greater than 50m <sup>2</sup> affected, and/or large amounts of smoke and/or steam present, and/or strong sulphurous odour (onsite/offsite), may be open flames), PIRMP initiated and/or, safety hazard or corrective actions works take >5days. An incident report must be filled out by the OCE or CHPP Shift Supervisor for these events and the Environment and Community Manager must be notified of the event immediately.
<b>SCMP</b>	Spontaneous Combustion Management Plan
<b>Tailings emplacement area</b>	Means emplacement areas currently approved under s100 of Coal Mine Health and Safety Act 2002.
<b>TARP</b>	Trigger Action Response Plan
<b>VOCs</b>	Volatile Organic Compounds
<b>WCPL</b>	Wilpinjong Coal Pty Limited

## 1.2 Purpose

The purpose of this Spontaneous Combustion Management Plan (this SCMP) is to ensure that spontaneous combustion at the Mine is minimised and effectively managed. This SCMP was developed to:

- Address the relevant requirements of Development Consent (SSD-6764) and Environment Protection Licence (EPL) 12425 (**Appendix 1**);
- Identify and characterise all plies, seams and interburden which carry a risk of generating spontaneous combustion;
- Identify all areas (including stockpiles and waste emplacement) at risk of spontaneous combustion events;
- Outline protocols for the ongoing monitoring and management of areas at risk of spontaneous combustion events;
- Outline protocols for the management of on-site heating and spontaneous combustion events;
- Outline protocols for any spontaneous combustion related non-compliance or complaints;
- Describe and assign responsibilities relating to spontaneous combustion management at the Mine; and
- Describe how this SCMP will be reviewed and updated.

### 1.3 Scope

This SCMP has been prepared in accordance with Condition 20(g), Schedule 3 of Development Consent (SSD-6764), Environmental Protection Licence 12425 (EPL 12425) and WCPL's Mining Operations Plan (MOP), to manage spontaneous combustion at the Mine.

### 1.4 Consultation

This SCMP was submitted to the DP&E for approval on 31 December 2014 (**Appendix 3**). Comments were received from DP&E on 26 February 2015 of which this plan further addressed.

Further consultation with DP&E and EPA was undertaken during the development of the Keylah Dump Removal Management Plan. The removal of Keylah Dump was completed during 2017 and is no longer a consideration for this SCMP.

On the 8 August 2019, WCPL commenced consultation with the DPE to request a minor variation to increase the disturbance footprint and open cut boundary to Pit 8, arising from refinement to the Pit 8 detailed design. On the 23 August 2019, WCPL received approval from the DPE that the proposed minor changes to the footprint area of Pit 8 are generally in accordance with the WEP and project approval. Accordingly, WCPL have updated all relevant management plans required by SSD-6764 to reflect this change, as discussed with the DPIE.

During May 2021, WCPL sought consultation with the DPE to request a minor variation to increase the disturbance footprint and open cut boundary of Pit 6, arising from refinement to the detailed design allowing access to additional coal reserves at the south-western boundary of Pit 6. On the 07 June 2021, WCPL received approval from the DPE the proposed minor changes to the footprint area of Pit 6 is generally in general accordance with the WEP and project approval (**Appendix 2**). Noting that minor changes to the disturbance footprint were contemplated following detailed design. Accordingly, WCPL have updated all relevant management plans required by SSD-6764 to reflect this change, as required by the DPE.

## 2 Statutory Requirements

This SCMP has been prepared to fulfil the requirements of the Development Consent (SSD-6764), EPL 12425 and MOP (**Appendix 1**). WCPL will implement all reasonable and feasible measures to prevent and/or minimise any material harm to the environment that may result from the construction, operation, or rehabilitation of the project.

### 2.1 Development Consent (SSD-6764) Requirements for SCMP

**Table 2** summarises WCPL’s main statutory requirement for developing a spontaneous combustion management plan. For more details on WCPL’s statutory requirements refer to **Section 2.0** of the AQMP.

**Table 2 WCPL’s Statutory Approvals**

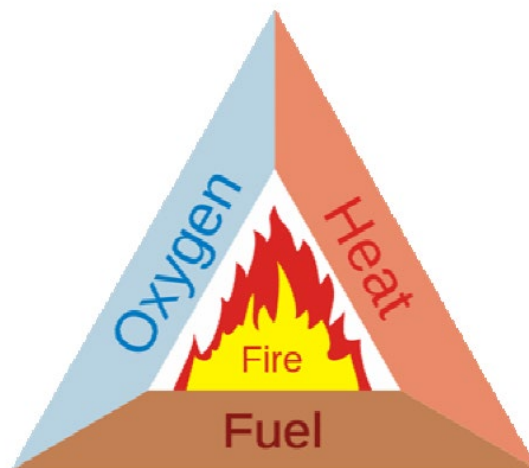
Development Consent (SSD-6764) Condition	SCMP Section
<p><b>Air Quality Management Plan</b>            20. Prior to carrying out any development under this consent, unless the Secretary agrees otherwise, the Applicant must prepare an Air Quality Management Plan for the development to the satisfaction of the Secretary. This plan must:</p>	<p>The AQMP</p>
<p>(a) Be prepared in consultation with the EPA;            (b) Describe the measures that would be implemented to ensure compliance with the relevant air quality criteria and operating conditions of this consent;            (c) Describe the air quality management system in detail;            (d) Include a protocol for notifying NSW Health and any affected residents of any exceedence of the air quality criteria;            (e) Include a review of all air quality management measures against best practice guidelines;            (f) Include an air quality monitoring program that:</p> <ul style="list-style-type: none"> <li>• Adequately supports the air quality management system;</li> <li>• Includes PM<sub>2.5</sub> monitoring in Wollar Village;</li> <li>• Evaluates and reports on the:               <ul style="list-style-type: none"> <li>- The effectiveness of the air quality management system;</li> <li>- Compliance with the air quality criteria;</li> <li>- Compliance with the air quality operating conditions;</li> <li>- Defines what constitutes an air quality incident, and includes a protocol for identifying and notifying the Department and relevant stakeholders of any air quality incidents;</li> </ul> </li> <li>and</li> </ul> <p>(g) Include a Spontaneous Combustion Management Plan that:</p> <ul style="list-style-type: none"> <li>• Identifies all areas (including stockpiles, waste emplacement, plies, seams and interburden) at risk of spontaneous combustion events;</li> <li>• Includes a protocol for ongoing monitoring and management of areas at risk of spontaneous combustions events; and</li> <li>• Includes a protocol for the management of on-site heating and spontaneous combustion events.</li> </ul>	<p>Section 3.0 &amp; Section 4.0             Section 7.0             Section 8.0</p>



### 3 Baseline Data and Background Information

#### 3.1 Spontaneous Combustion Mechanism

MDG 1006 *Spontaneous Combustion Management - Technical Reference* (I&I NSW, 2011) has described spontaneous combustion as the process of self-heating of coal by oxidation. After exposure to oxygen, coal undergoes a continuous exothermic oxidation reaction. Coal fires require three basic elements to exist as shown **Figure 1**.



**Figure 1 Fire Triangle (Coaltech, undated)**

Spontaneous combustion of coal occurs by the following steps (I&I NSW, 2011):

- Oxygen (from airflow and ventilation) reacts with coal. This is called oxidation.
- Oxidation produces heat. This is called an exothermic reaction.
- If this heat is lost to the surroundings (mine environment), then the coal mass will cool. However, if the mine environment favours the heat being retained, the coal mass will increase in temperature and the oxidation rate will increase leading to spontaneous combustion. Significant amounts of heat can also be generated when the coal absorbs moisture.

On exposure to air (i.e. oxygen), and in the presence of water to aid the exothermic reaction, coal undergoes a continuous oxidising reaction. The hazard of spontaneous combustion exists when the rate of heat production exceeds the rate of cooling. The coal can then increase in temperature until combustion takes place.

The mining process begins the cycle by disturbing the coal (carbonaceous material). On exposure to air the coal commences oxidation. The oxidation reaction produces heat which can then potentially cause spontaneous combustion if the self heating continues undisturbed.

The actual spontaneous combustion process is complex. In open pit mining, the major factors affecting the propensity of coal to spontaneously combust are intrinsic factors, (coal characteristics) and extrinsic factors, atmospheric, geological and mining conditions).

The nature of intrinsic factors can be both chemical and physical including but not restricted to (Guney, 1968):

- Coal composition, rank and petrographic constituents;
- Coal friability, particle size and surface area;
- Coal moisture content;
- Presence of pyrite in coal (in certain forms); and
- Other mineral matter in coal (silicates, carbonates and sulphates).

The extrinsic factors are those that have an impact on the coal from the environment, such as (DERM, 1995; Guney, 1968, Coaltech, undated):

- Climatic condition (temperature, relative humidity, barometric pressure and oxygen concentration);
- Dump consolidation, influenced by height, method of formation and equipment used;
- Seam thickness;
- Excavation stability and maintenance (for highwall faces);
- Presence of bacteria;
- Coal stockpile management (compaction, height and method of coal stockpiling);
- Geological disturbances (faults and dykes); and
- Oxygen concentration.

Mining and coal handling can have a significant effect on the propensity of coal to spontaneously combust. Unshaped spoil dumps appear more susceptible to spontaneous combustion, since the batters have not been reshaped. Based on spontaneous combustion occurring at other mines it has been found that reshaping batters allows the movement of air over the surface rather than penetrating through the unshaped steep batters into rock voids, and lowers the likelihood of spontaneous combustion outbreaks.

Additionally, based on previous spontaneous combustion at other coal mines it has been found that areas that have undergone higher compaction (such as roads) exhibit less spontaneous combustion than batter areas. This indicates that compaction is a method of controlling and managing spontaneous combustion.

## 3.2 Material Prone to Spontaneous Combustion

Spontaneous combustion events at the Mine have historically been associated with both ROM coal stockpiles and carbonaceous material located in out of pit waste rock emplacements. Spontaneous combustion events have occurred in out of pit waste rock emplacements due to construction at the commencement of the Mine, before the higher spontaneous combustion propensity of some carbonaceous waste materials was identified. While these events have been managed in accordance with the Spontaneous Combustion Management Plan, they have at times resulted in reported odour and/or associated environmental complaints from nearby private receivers and/or users of Ulan-Wollar Road.

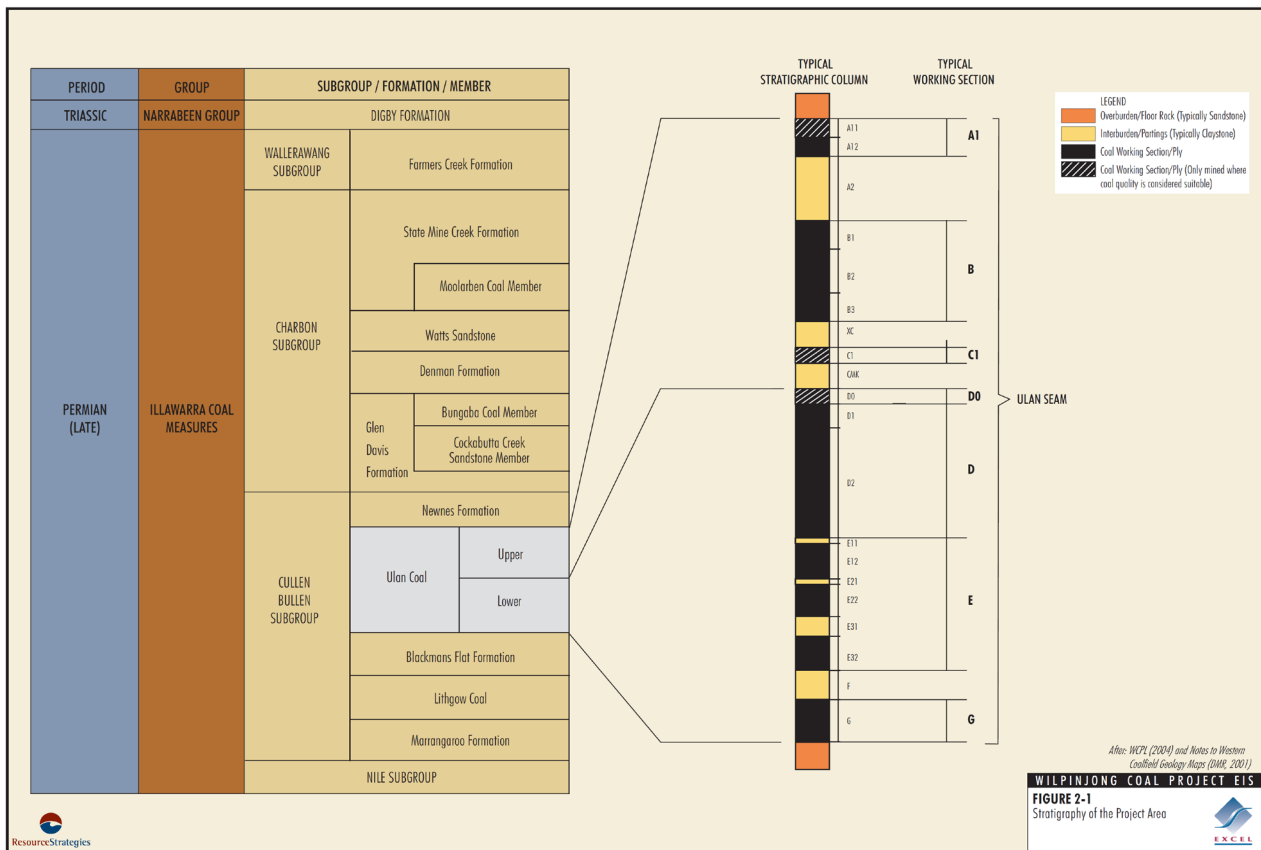
The coal stockpile spontaneous combustion events experienced at the Mine have arose due to stockpiling of ROM coal for an extended period. WCPL has put in place a risk identification system, whereby coal stockpiles that have a higher propensity to spontaneously combust are closely monitored (including physical inspections at eight hour intervals and/or use of thermal guns to identify areas of heating). In addition, after select ROM coal types have been stockpiled on-site for a designated period, they are prioritised for washing in the CHPP, to reduce the risk of spontaneous combustion events occurring in ROM coal. Management strategies for material prone to spontaneous combustion are detailed in **Section 6.0**.

## 3.3 Material Classifications

### 3.3.1 Geology

As outlined within the EIS 2005, the Wilpinjong resource is contained in the Ulan Coal which occurs in the lower part of the Late Permian Illawarra Coal Measures (**Figure 2**). These coal measures are overlain by the Triassic Narrabeen Group (locally known as the Wollar Sandstone) and comprise mainly conglomerate and sandstone. The Ulan Coal is divided into two sections (upper and lower) and is separated by the C-marker, CMK (**Figure 2**). The combined sections of the Ulan Coal are commonly named and herein referred to as the Ulan Seam. The Ulan Seam is approximately 15 metres (m) thick and comprises of plies of good to fair quality coal, plies of poorer quality (i.e. high ash) stony coal and partings of carbonaceous claystone, claystone, tuffs and other non-coal lithologies.

**Figure 2 Stratigraphy of Wilpinjong Coal Mine**



### 3.3.2 Spontaneous Combustion Propensity

Assessments of the propensity of the coal and carbonaceous partings to spontaneous combust identified the majority of the coal and waste material in the coal stratigraphy had a low propensity for spontaneous combustion. **Table 3** provides details on Summary of Spontaneous Combustion Assessment at the Mine.

**Table 3 Summary of Spontaneous Combustion Assessments – Wilpinjong**

Report Details	Results
Adiabatic Self-Heating Test ( $R_{70}$ ), Rail Loop Adjacent to chainage 2085 in layout option 7c Floor RL396. Undated (prior to 2006)	The results showed the average rate of self-heating from 40°C to 70°C ( $R_{70}$ ) was 0°C/hr. This result indicates that spontaneous of the carbonaceous material is unlikely. The laboratory results are included in <b>Appendix 4</b> .
Spontaneous Combustion Assessment of a Parting Lump Sample from Wilpinjong Colliery, Dr Basil Beamish – 01 May 2012	<p>The <math>R_{70}</math> self-heating rate value recorded for the parting sample from Wilpinjong Colliery is 1.88°C/h. This rates the sample as having a low-medium intrinsic spontaneous combustion reactivity based on New South Wales conditions. This value is consistent with the rank and type of coal.</p> <p>The relative ignition temperature (RIT) of the Wilpinjong Colliery sample is 150 °C, which is again consistent with the rank and type of coal. Calculated spontaneous combustion index parameters for minimum self-heating temperature and crossing point temperature indicate the Wilpinjong Colliery sample has a medium spontaneous combustion propensity rating.</p> <p>A moist adiabatic benchmark test of the parting sample from Wilpinjong Colliery indicates that self-heating is significantly controlled by the moisture in the sample. In practical terms this coal would not reach thermal runaway in under 6 to 9 months in a loose pile situation.</p>

Site experience however has shown that parting material in the lowest section of the coal stratigraphy poses a risk for spontaneous combustion. Parting material associated with the lowest coal plies (E & G Seams) presents the highest risk for spontaneous combustion when exposed to atmospheric conditions.

To further understand propensity of carbonaceous material at the Mine, WCPL is currently undertaken a series of Adiabatic Oven R<sub>70</sub> tests of all coal and carbonaceous partings and is further discussed in **Section 6.0**.

### 3.4 Benchmarking Study

In September 2014 Palaris was engaged by WCPL to complete a spontaneous combustion management benchmarking study, to identify current operational control strategies and monitoring systems for spontaneous combustion at open cut mines. The study examined industry guidelines, research papers and current spontaneous combustion management plans and procedures of operations in Australia and around the world.

The information presented in the benchmarking study was used during the Spontaneous Combustion Risk Assessment (**Section 4**) in the development of this Management Plan. A summary of the recommended control strategies and monitoring systems identified from the benchmarking study is provided in **Table 4**. Control strategies and monitoring systems to be implemented by WCPL are detailed in **Section 6.0** and **Section 7.0**

**Table 4: Benchmarking Study Summary**

Area	Control Strategies and Monitoring Systems	
	Minimum	Additional
<b>General</b>	<ul style="list-style-type: none"> <li>Risk identification using MDG1010 and ISO31000.</li> <li>Develop a Trigger Action Response Plan.</li> <li>Good communications between Mining Manager, CHPP Manager and Environment and Community Manager about carbonaceous material and high risk coal.</li> <li>Determine predominant wind direction.</li> <li>Lower slopes and higher compaction on windward side.</li> <li>Lift heights as low as practicable to minimise segregation.</li> <li>Limit total spoil pile to 10-12 m or as determined by WCPL.</li> <li>Monitor in several locations.</li> </ul>	<ul style="list-style-type: none"> <li>Visual monitoring aided by hand held infrared thermometer.</li> <li>Monitoring of unmanned aircraft systems with thermal camera.</li> </ul>
<b>ROM stockpiles/pro duct stockpiles</b>	<ul style="list-style-type: none"> <li>Determine incipient heating time for coal.</li> <li>Load coal in sequential order (first-in-first-out).</li> <li>Maximum stockpiling time without controls: 2 months.</li> <li>Monitoring and prioritising rotating of stockpiles.</li> <li>Daily visual monitoring with increased frequency after incipient heating time has passed or temperature increased.</li> </ul>	<ul style="list-style-type: none"> <li>Wind anemometer controlled dust suppresser in combination with monitoring coal moisture.</li> </ul>
<b>Out of pit spoil stockpiles</b>	<ul style="list-style-type: none"> <li>Forward planning waste material budget.</li> <li>Place carbonaceous material in deeper depths.</li> <li>Encapsulate carbonaceous material in inert material.</li> <li>Early identification of material for cover construction, GPS location of material, document volume and particle size distribution.</li> <li>Visual monitoring between daily-monthly.</li> </ul>	<ul style="list-style-type: none"> <li>Place compacted inert layer between layers of carbonaceous material.</li> <li>Compact with rollers instead of dozers.</li> <li>Before burying, mix carbonaceous material with inert material to decrease pore space.</li> </ul>
<b>Rehabilitation areas</b>	<ul style="list-style-type: none"> <li>Construct cover system.</li> <li>Indicative cover thickness: <ul style="list-style-type: none"> <li>Clay rich material: 1-2 m</li> <li>Sandstone material: 5-10 m</li> </ul> </li> <li>For final landform, plan surface water management to avoid erosion.</li> <li>Monthly visual monitoring.</li> </ul>	<ul style="list-style-type: none"> <li>Determine site specific cover thickness.</li> <li>Run cover trials.</li> </ul>

## 4 Risk Assessment

On 19 September 2014, WCPL undertook a detailed risk assessment to assess the environmental, community and regulatory risks associated with spontaneous combustion onsite (in general) as well as the removal and disposal of Keylah Dump material. The risk assessment sought to identify the key risks, existing control measures and any additional controls that could be implemented to reduce impacts during operations.

The risk assessment was undertaken in accordance with WCPL's Risk Management Plan (WI-SAH-MNP-0007). The following WCPL personnel participated in the risk assessment:

- Blair Jackson – General Manager;
- Peter Grosvenor – Mine Manager;
- Kieren Bennetts – Environment and Community Manager (ECM);
- Clark Potter – Senior Environmental Advisor;
- Karin Fogarty – Environmental Advisor;
- Richard Cade – CHPP Manager;
- David Mealing – Maintenance Manager; and
- Nicholas Collings – Technical Services Manager.

A summary of the outcomes of the risk assessment for spontaneous combustion onsite (in general) are included in **Appendix 5**.

Controls identified in **Appendix 5** are discussed further in **Section 6.0** and **Section 7.0**.

### 4.1 Areas at Risk of Spontaneous Combustion

The main areas at risk of spontaneous combustion events are:

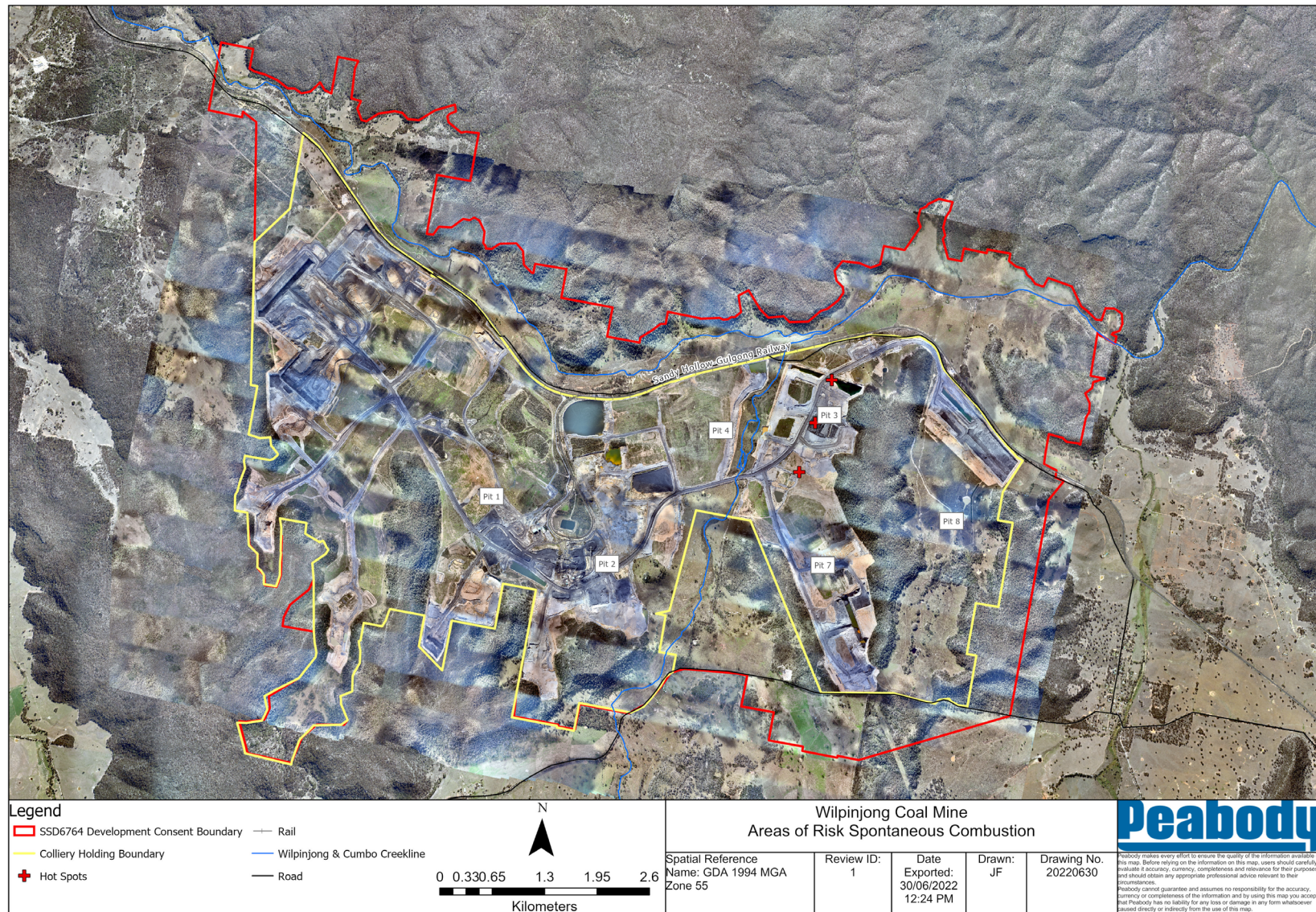
- Out of Pit Dumps;
- Rehabilitation Areas;
- ROM Stockpiles and associated infrastructure (bins); and
- Product Stockpiles.

These areas are shown on **Figure 3** (as of February 2020). Other areas that may be prone to minor spontaneous combustion events are:

- In Pit Dumps;
- Reject Emplacement Areas;
- Tailings Emplacement Areas;
- Highwalls; and
- Windrows e.g. along haul roads.

Management measures for all areas are discussed in **Section 6.0** and **Section 7.0**.

Figure 3 Areas at Risk of Spontaneous Combustion



## 5 Performance Indicators

WCPL has developed a number of performance indicators for spontaneous combustion management, to assess the performance of the Mine (**Table 5**).

**Table 5 Performance Indicators**

Performance Indicator	Indicator
Number of verified complaints received relating to spontaneous combustion	0
Number of incidents relating to spontaneous combustion	0
Number of times operations have been shut down as a result of complaints/incidents relating to spontaneous combustion	0

WCPL will report on progress against these performance indicators in the Annual Review (**Section 11.2**). In the event that a complaint is received relating to spontaneous combustion, it will be handled in accordance with the complaints management protocol (**Section 10.0**).

Contingency plans for unpredicted spontaneous combustion impacts are discussed in **Section 8.0**.

## 6 Preventative Management and Control Measures

Efforts for managing spontaneous combustion at the Mine will be focussed on prevention of outbreaks rather than management of outbreaks. The focus of spontaneous combustion management will be on reducing the risk of an outbreak. However, if an outbreak does occur, the process detailed in **Section 8.1** will be implemented.

### 6.1 Mine Planning

Mine planning is critical to the prevention and management of spontaneous combustion at the Mine. **Table 6** lists the key mine planning tools utilised at the Mine for spontaneous combustion prevention and management.

**Table 6 Mine Planning Tools for Spontaneous Combustion Prevention and Management**

Tool	Spontaneous Combustion Prevention and Management
<b>Life of Mine (LOM) Planning</b>	<ul style="list-style-type: none"> <li>• LOM planning and dumping strategy takes into account management of carbonaceous material i.e. placement within rehabilitated landforms, drainage interactions and post mine landuses.</li> <li>• This includes undertaking periodic calculated mass balances to identify expected waste carbonaceous materials and ensure appropriate volumes of inert materials are available for capping.</li> </ul>
<b>Mining Operations Plan (MOP)*</b>	<ul style="list-style-type: none"> <li>• The MOP details WCPL's rehabilitation strategy, including placement and capping of rejects and other waste carbonaceous materials to ensure future spontaneous combustion events are minimised in reject emplacement areas.</li> <li>• All reject material is placed at least 5m below finished surface level (FSL) in Out of Pit Dumps (OOPDs) and at least 2m below FSL in reject emplacement areas and tailings storage areas and capped with inert material to minimise the potential for spontaneous combustion outbreaks.</li> <li>• The MOP also includes conceptual drainage designs for final landforms rehabilitation areas.</li> <li>• WCPL will further investigate drainage options relevant to spontaneous combustion in the next review of the MOP e.g. Duffy's Dump.</li> </ul>
<b>Material placement and capping strategy</b>	<ul style="list-style-type: none"> <li>• WCPL has identified suitable (inert) capping materials for use in reject emplacement areas and a program is currently being undertaken to assess the chemical composition and document the volume and particle size distribution of these materials.</li> <li>• WCPL is currently reviewing the capping strategy to investigate the use of a thicker layer of inert capping material.</li> <li>• High risk partings and reject (E &amp; G coal) is placed as low as practical in the spoil profile.</li> <li>• Annual review and inspection of the process for tailings emplacement areas.</li> <li>• A minimum of 2m of inert material will be placed over final dumps of carbonaceous material (unless specified within the MOP).</li> <li>• Final dumps will be track rolled to form low angle batters and covered with inert material as soon as practicable.</li> <li>• In the pit, carbonaceous material will not be placed against the high wall. Carbonaceous material in the low wall will be exposed for the minimum period practical, and where exposed will be visually monitored daily via OCE reports.</li> </ul>
<b>Dump design</b>	<ul style="list-style-type: none"> <li>• Dump designs include a minimum thickness of inert capping material (2m).</li> <li>• Lift heights are kept as low as practicable to minimise segregation.</li> <li>• Dump designs have included the addition of appropriate inert material during construction to ensure the cutting down and reshaping out of pit dumps does not damage the integrity of the minimum capping material requirements (i.e. minimum of 2m).</li> </ul>
<b>High wall design</b>	<ul style="list-style-type: none"> <li>• Exposed seams of non-active faces are generally sealed with inert material, with the exception of the high wall in Pit 2 (Pit 2 currently used to store water - a Final Void Management Plan will be developed to manage this void).</li> </ul>
<b>Windrow design</b>	<ul style="list-style-type: none"> <li>• Windrows are built from inert material.</li> </ul>
<b>Tailings dam</b>	<ul style="list-style-type: none"> <li>• WCPL's tailings dams are designed, maintained and decommissioned in accordance with relevant</li> </ul>



Tool	Spontaneous Combustion Prevention and Management
<b>design and management</b>	<p>approvals e.g. s100 and s101 approvals and the WCPL Tailings Storage Facility Operation and Maintenance Manual.</p> <ul style="list-style-type: none"> <li>When the tailings emplacement area is decommissioned the surface of the tailings will be compacted, if safe to do so, and capped with inert material to a nominal depth of 2m.</li> <li>The actual depth will be determined based on the properties of the tailings. The capped material will then be monitored on a regular basis for signs of spontaneous combustion for the life of the Mine.</li> </ul>
<b>Coal stockpile design and management</b>	<ul style="list-style-type: none"> <li>Stockpile designs take into account the following elements: <ul style="list-style-type: none"> <li>Predominant wind direction (west)</li> <li>Lower slopes and higher compaction on western side</li> <li>Incipient heating times for coal</li> <li>Loading coal in sequential order (first-in-first-out)</li> </ul> </li> </ul> <p>WCPL has developed a Product Stockpile Management Plan and Procedure to manage onsite product stockpiles</p> <ul style="list-style-type: none"> <li>WCPL is reviewing volume management requirements with an aim of minimising ROM stockpiles and reducing rehandling costs</li> </ul> <p>Maintaining the “Weekly Stockpile Plan” (Refer to <b>Section 7.2</b>)</p>
<b>Planning and Senior Leadership Team (SLT) meetings</b>	<ul style="list-style-type: none"> <li>Information on weather forecasts as well as stockpile age and results from weekly inspections (observations) is disseminated to key personnel at daily planning meetings.</li> <li>Information on potential hotspots is communicated between the Mining Manager, CHPP Manager and Environment and Community Manager at SLT meetings.</li> </ul>

**Notes:** \* WCPL are transitioning from a MOP to Rehabilitation Management Plan (RMP) as set out in the form and way for a rehabilitation management plan, in accordance with Clause 9 of Schedule 8A to the Mining Regulation 2016.

## 6.2 Spontaneous Combustion Propensity Testing

WCPL has conducted a review of spontaneous combustion propensity characteristics throughout the coal seam (including partings) in accessible pits. This included R<sub>70</sub> testing and analysis of 58 samples from Pit 3, 4, 7 and 5 to understand the intrinsic coal reactivity at the Mine. Results indicate 6.8% of samples are classed as having a low propensity rating, 50% low-medium and 43.2% medium. The G and E coal in Pit 3 and Pit 7 recorded the highest results. WCPL will continue to undertake propensity testing in Pit 6 and Pit 8 once these areas have been exposed to mining.

Results from the program guides improvements to carbonaceous material management and mitigation measures, including the design, construction and monitoring of the Elevated Waste Rock Emplacement in Pit 2.

## 6.3 Risk Identification and Assessment

WCPL has implemented a risk identification system, whereby coal stockpiles that have a higher propensity to spontaneously combust are closely monitored (including physical inspections each shift and/or use of thermal guns to identify areas of heating) (**Section 7.1**). WCPL will prioritise the washing of selected ROM coal types (that are showing some signs heating or discolouration or have been stockpiled on-site for an extended period) in the CHPP, to reduce the risk of spontaneous combustion events occurring in ROM coal (**Section 7.2**).

## 6.4 Identification of Potential Hot Spots

WCPL has identified and mapped existing spontaneous combustion hot spots across the Mine, including in all out of pit dumps (OOPDs), stockpiles and reject emplacement areas (**Figure 3**), using thermal imaging technology and visual inspections. Other areas shown on **Figure 3** are areas of which hot material has been placed at depth.

The use of aerial thermal imagery across the Mine will be conducted at a minimum of every two years, noting the most recent aerial thermal imagery was completed on 8 October 2021. If required, the frequency of the aerial thermal imagery inspection program will be increased if the monitoring identifies a heightened risk of spontaneous combustion.

The FLF surface above these deposit areas will be continued to be monitored to ensure no signs of surface instability or vegetation damage occurs.

Hot spots are monitored and assessed on a regular basis to determine appropriate mitigation strategies as well as provide feedback into the understanding of spontaneous combustion management at the Mine (i.e. appropriate capping depths, timeframe for reactivity of carbonaceous material).

## 6.5 Air Quality Management Plan

The AQMP (WI-ENV-MNP-0004) has been developed to ensure that operational air quality impacts on the local community are minimised to the extent required by Development Consent (SSD-6764) and EPL 12425. The AQMP details WCPL's air quality management and control measures and monitoring program, including the use of predictive weather forecasting and monitoring of meteorological (e.g. wind speed and direction) and air quality conditions in and around the Mine.

Predictive weather forecasting is a useful tool for spontaneous combustion management as it allows mine personnel to pre-empt potential spontaneous combustion outbreaks and respond accordingly i.e. high westerly winds. A daily report containing meteorological forecast information is issued via email to key operational personnel. Where adverse meteorological conditions are forecast the notification will alert these personnel that the Air Quality Management System (AQMS) may need to be implemented in the next 24 hour period (refer to Section 5.4 of the AQMP).

Condition 16 of Schedule 3 of Development Consent (SSD-6764) requires that WCPL will ensure that no offensive odours are emitted from the site, as defined under the POEO Act.

## 6.6 Stakeholder Engagement

WCPL regularly communicates with key stakeholders on the prevention and management of spontaneous combustion onsite. Stakeholder engagement activities include:

- Community/stakeholder meetings;
- Community Consultative Committee (CCC) meetings; and
- Distribution of a community fact sheet on spontaneous combustion.

WCPL has also implemented a Complaints Response Protocol to respond to complaints regarding spontaneous combustion (**Section 10.0**).

## 6.7 Training and Education

All employees will be educated in the basic identification of smoke, heat and smell associated with spontaneous combustion.

Specific training in the form of Tool Box Talks will be provided to key WCPL personnel as required.

All employees will effectively be responsible for detecting spontaneous combustion and reporting any visible signs of smoke/steam to the OCE immediately.

## 7 Inspections and Monitoring

### 7.1 Spontaneous Combustion Inspection Program

WCPL has developed an inspection program for spontaneous combustion at the Mine. An inspection program of spoil emplacements, stockpiles and tailings emplacement areas will be implemented, based on visual and odour assessment, targeting cool moist periods when signs will be most visible. This inspection program is summarised in **Table 7**.

The 2021 Environmental Independent Audit (2021 IEA) identified several recommendations for the SCMP, including reviewing the OCE's daily inspection report to include corrective actions upon verification of the detection of spontaneous combustion and an appropriate procedure to mitigate off site odour impacts. Consequently **Table 7** and **Figure 5** was updated to ensure corrective actions are implemented as appropriate upon verification of detection of spontaneous combustion by all relevant WCPL personnel during inspections of the Mine.

**Table 7 Spontaneous Combustion Inspection Program**

Area	Description	Frequency
<b>All coal stockpiles</b>	<ul style="list-style-type: none"> <li>The Open Cut Examiner (OCE) will conduct a visual inspection of the ROM coal stockpiles for evidence of the presence of spontaneous combustion and implement corrective actions as appropriate if spontaneous combustion is identified. The inspection is undertaken per shift and involves observing the stockpiles for any visible signs of smoke or any other obvious signs of heat production within the stockpiles.</li> <li>The CHPP Supervisor will conduct a visual inspection of the product coal stockpiles for evidence of the presence of spontaneous combustion per shift and involves observing the stockpiles for any visible signs of smoke or any other obvious signs of heat production within the stockpiles and implement corrective actions as appropriate if spontaneous combustion is identified.</li> <li>The Coal Quality Engineer will conduct a visual inspection of the ROM stockpiles daily and involves observing the stockpiles for any visible signs of smoke or any other obvious signs of heat production within the stockpiles and implement corrective actions as appropriate if spontaneous combustion is identified.</li> </ul>	<ul style="list-style-type: none"> <li>Every shift (OCE)</li> <li>Daily (CHPP Logistics Engineer)</li> <li>Daily (Coal Quality Engineer)</li> </ul>
<b>High Wall, Active Pits and reject disposal areas</b>	<ul style="list-style-type: none"> <li>The OCE will conduct a visual inspection of high walls and reject disposal areas within active pits for evidence of spontaneous combustion and implement corrective actions as appropriate if spontaneous combustion is identified.</li> <li>The OCE will observe the exposed coal seams within the high wall, active pits as well as windrows for any visible signs of smoke or evidence of heat generation and implement corrective actions as appropriate if spontaneous combustion is identified.</li> <li>Additionally, the OCE will conduct visual inspections to ensure that the correct reject disposal is being undertaken.</li> </ul>	<ul style="list-style-type: none"> <li>Daily (OCE)</li> </ul>
<b>Spoil dumps/Out of pit dumps</b>	<ul style="list-style-type: none"> <li>The OCE will conduct a visual inspection of spoil dumps for visual evidence of spontaneous combustion and implement corrective actions as appropriate if spontaneous combustion is identified.</li> </ul>	<ul style="list-style-type: none"> <li>Daily (OCE)</li> </ul>
<b>Rehabilitation Areas</b>	<ul style="list-style-type: none"> <li>The Environmental Representative (ER) will also conduct regular visual inspections of the rehabilitated landforms for evidence of spontaneous combustion and implement corrective actions as appropriate if spontaneous combustion is identified.</li> </ul>	<ul style="list-style-type: none"> <li>Quarterly (ER)</li> <li>Opportunistic</li> </ul>
<b>Tailings emplacement areas</b>	<ul style="list-style-type: none"> <li>Weekly inspections are undertaken of prescribed tailings facilities for signs of spontaneous combustion and implement corrective actions as appropriate if spontaneous combustion is identified</li> <li>Annual Surveillance Report undertaken by Tailings Engineer.</li> </ul>	<ul style="list-style-type: none"> <li>Weekly (ER)</li> <li>Annually (Technical Services Manager)</li> </ul>

Area	Description	Frequency
All mine site	<ul style="list-style-type: none"> <li>Undertake thermal imaging surveys of the entire site to identify new sites and monitor existing areas for any changes and implement corrective actions as appropriate if spontaneous combustion is identified</li> <li>Use of the drone for thermal imaging as well as thermal guns for short term requirements where signs of spontaneous combustion is evident to determine temperatures before applying appropriate risk mitigation.</li> </ul>	<ul style="list-style-type: none"> <li>Biennially (Survey)</li> <li>As required (Survey &amp; Production/ CHPP team members)</li> </ul>

## 7.2 Weekly Stockpile Plan

The Weekly Stockpile Plan is a weekly report that is reviewed and updated daily as an operational coal stockpile management plan. Its function is to provide up-to-date information on:

- The location of each ROM and Product stockpile onsite;
- Volumes and age of each stockpile;
- Coal quality details for each stockpile;
- Visual inspection records of ROM stockpiles;
- CHPP feed & washing requirements; and
- Train schedules and marketing requirements.

The Weekly Stockpile Plan also allows WCPL to:

- Monitor for spontaneous combustion of coal stockpiles and apply appropriate mitigation strategies;
- Build an operational understanding of coal propensity to spontaneous combustion and reactivity timeframes/oxidation rates of coal; and
- Manage stockpiles according to age, coal type, volumes and results from visual inspections (as shown in **Figure 4**):
  - Including a traffic light system for stockpile ages
    - Green –up to 1.9 months.
    - Yellow – 2.0 – 3.4 months.
    - Orange – 3.5 – 4.9 months.
    - Red - >5 months.
  - Comments provided through inspections as described in Section 7.1 provide further guidance through the use of a traffic light system including:
    - Green – no priority.
    - Yellow – some priority over stockpiles with no priority.
    - Red – top priority over all other stockpiles.

Determination of the priority is based upon the Coal Quality Engineer's experience and knowledge on coal characteristics, age and stockpile performance as well as any visual signs of preheating.

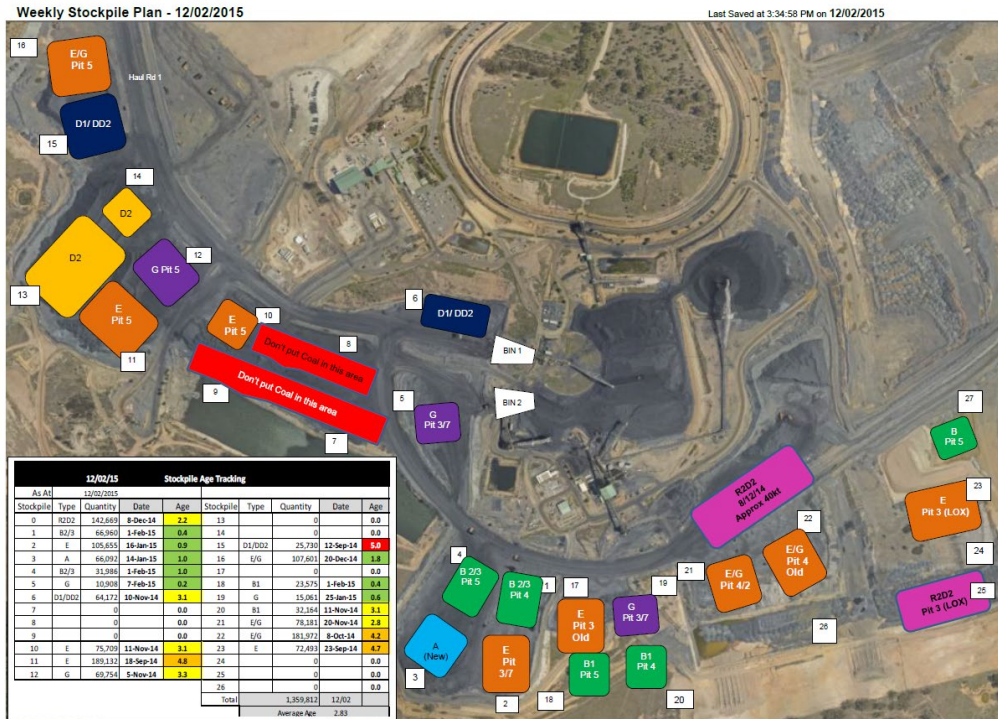


Figure 4 Exert from Weekly Stockpile Plan

## 7.3 Rehabilitation Monitoring

WCPL has developed a Biodiversity Management Plan (WI-ENV-MNP-0035) which includes a detailed Biodiversity Monitoring Program for all areas of the Mine, including rehabilitated areas. Monitoring of rehabilitated areas will be undertaken annually to assess the success of the rehabilitation against established completion criteria, as detailed in the Mining Operations Plan (MOP). Rehabilitated areas affected by spontaneous combustion will require rehabilitation to ensure completion criteria are met.

Quarterly and opportunistic inspections of rehabilitated areas will be undertaken by the Environmental Representative to monitor for failure of final landforms and potential spontaneous combustion issues.

An annual inspection of rehabilitation areas will also be undertaken for signs of spontaneous combustion. The performance of WCPL's rehabilitation is reported as part of the Annual Review process.

### 7.3.1 Monitoring Records

WCPL will record the following details for all gas particulate monitoring samples:

- The date(s) on which the sample was taken;
- The time(s) at which the sample was collected;
- The point at which the sample was taken; and
- The name of the person who collected the sample.

Monitoring records will be:

- Recorded in a legible form, or in a form that can readily be reduced to a legible form;
- Kept for at least 4 years after the monitoring or event to which they relate took place; and
- Produced in a legible form to any authorised officer of the EPA who asks to see them.

## 8 Response to Spontaneous Combustion Events

### 8.1 Hazard/Incident Response

When smoke or other evidence of spontaneous combustion is identified on site the process in **Figure 5** will be implemented.

To address the 2021 IEA recommendation regarding development of an appropriate procedure to mitigate off-site odour impacts, WCPL have included an offensive odour assessment (**Figure 5**) to verify if an offensive odour is present outside of the boundary of Project Approval SSD-6764 boundary (Project Boundary), when spontaneous combustion events have been identified.

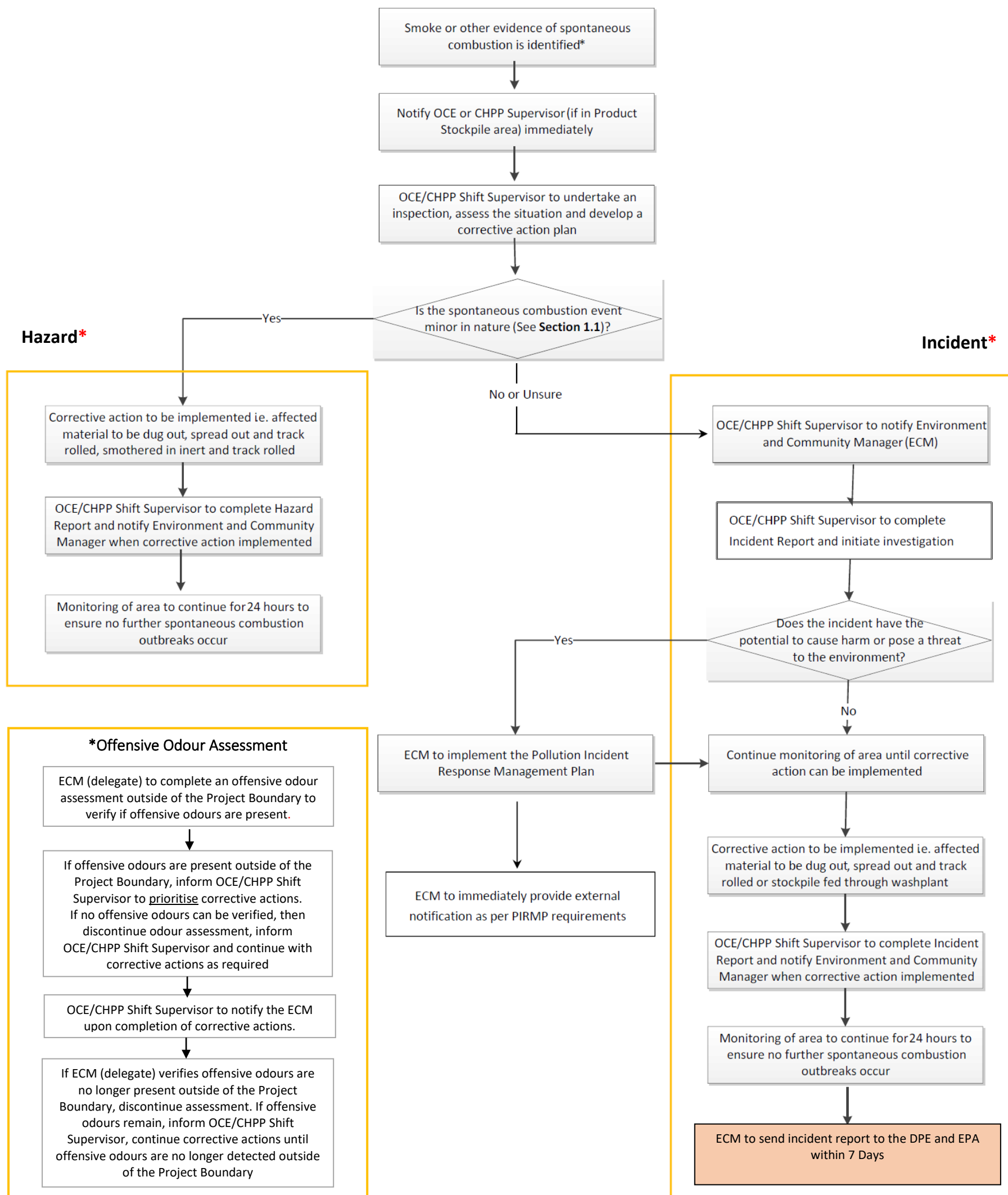


Figure 5 WCPL Response to Spontaneous Combustion Events

## 8.2 Corrective Actions

WCPL will implement appropriate corrective actions relevant to the spontaneous combustion event on site. All corrective actions will be developed with appropriate risk management considerations including personnel safety.

Where there is a spontaneous combustion event and open flames are identified the area will be saturated in water to put out the flames and cool the combustible material. Wilpinjong maintains a supply of FLAME-OUT on standby in the event of a spontaneous combustion event. FLAME-OUT is added to a water cart and will douse the area with the mixture.

The Emergency Response Procedure will be initiated in the event of the identification of any open flames. The use of sporadic water application to prevent an outbreak of spontaneous combustion actually aides and accelerates the process of spontaneous combustion.

As such, water will only be used when continuous saturation can be achieved before additional corrective actions are applied i.e. ROM stockpiles being saturated prior to washing through the CHPP.

### 8.2.1 ROM or Product Stockpiles

If spontaneous combustion is identified within a ROM or product stockpile, the OCE or CHPP Shift Supervisor will organise for the affected material to be pushed out and compacted, either using a dozer or long reach excavator. This action would normally be undertaken as soon as possible (generally by the end of the shift). For stockpiles exhibiting more developed indicators like smoke or flames, stockpiles are to be saturated with water with priority allocated with washing to occur through the CHPP.

### 8.2.2 Out of Pit Dumps

If spontaneous combustion is identified within an out of pit dump, the OCE will organise for the either the affected material to be dug out, spread and compacted, either using a dozer or excavator or organise for inert material to smother the area before track rolling to add in compaction. The dump will then be reshaped and, where possible, the angle of the batters will be reduced and the batters track rolled to accelerate airflow over the top of the compacted batters.

### 8.2.3 Active Pit/Reject Emplacement Areas

If spontaneous combustion is identified within a reject disposal area or active pit area (including windrows) the OCE will organise for the affected material to be dug out, spread and compacted (typically using a dozer) and then covered with a track rolled layer of inert material.

### 8.2.4 Rehabilitated Areas

If spontaneous combustion is identified within a rehabilitated area the OCE or Environmental Representative will organise for the affected material to be dug out and removed from the area. A layer of inert material will be placed over the area and shaped consistent with the surrounding landform and drainage requirements. The area will then be rehabilitated in accordance with the requirements of the MOP. The material that is removed from the area will be placed in a mined out void and managed similar to material removed from Keylah Dump.



## 9 Contingency Plan to Manage Unpredicted Impacts

As outlined within the AQMP, WCPL has a good understanding of the ambient air environment surrounding the Mine and has established a comprehensive AQMS to monitor and respond to air quality management issues. In the event that unpredicted air quality impacts occur as a result of mining activities at the Mine, WCPL will:

- Review the current AQMS (controls and monitoring), to ensure it is effective and criteria is being met;
- Develop and implement additional management or mitigation measures;
- Undertake follow-up air quality monitoring to assess the effectiveness of the additional measures; and
- Report any exceedance and non-compliances in accordance with **Section 11.1**.

## 10 Complaints Response Protocol

WCPL operates a Community hotline (**1300 606 625**) for the purpose of receiving complaints from members of the public in relation to mining activities at the Mine. For further details refer to **Section 8** of the AQMP.

## 11 Reporting

The following external reporting will be undertaken by WCPL in accordance with the conditions of the Development Consent (SSD-6764), EPL 12425 and Mining Leases:

- Exceedance and non-compliances /Incident reporting;
- Annual Review;
- Independent Environmental Audit;
- EPL Annual Return; and
- Website updates

For further details refer to **Section 9** of the AQMP.

### 11.1 Incident and Non-Compliance Reporting

Exceedances and non-compliances of the Air Quality Criteria in **Table 9** will be reported to DP&E, EPA and NSW Health as soon as practicable. As soon as practicable after confirming that an exceedance is a non-compliance, WCPL will notify affected landowners in writing of the non-compliance, and provide regular monitoring results to each affected landowner until the project is again complying with the relevant criteria. For further details refer to **Section 9.1** of the AQMP.

### 11.2 Annual Review

At the end of March each year, WCPL will review the environmental performance of the Mine including performance against **Section 5.0** and submit an Annual Review report to the DP&E. For further details refer to **Section 9.2** of the AQMP.

### 11.3 Independent Environmental Audit

Within a year of commencing development under (SSD-6764), and every three years thereafter (unless the Secretary directs otherwise) WCPL will commission an Independent Environmental Audit (IEA) of the Mine. For further details refer to **Section 9.3** of the AQMP.

## 11.4 EPL Reporting

WCPL will prepare and submit an Annual Return comprising a certified Statement of Compliance and a signed Monitoring and Complaints Summary to the EPA at the end of each EPL reporting period.

The Annual Return for the reporting period will be supplied to the EPA by registered post not later than 60 days after the end of each reporting period. WCPL will retain a copy of the Annual Return for a period of at least four years after the Annual return was due to be supplied to the EPA.

## 11.5 Website Updates

WCPL will ensure that any information relevant to spontaneous combustion management is uploaded to the website (<https://www.peabodyenergy.com/Operations/Australia-Mining/New-South-Wales-Mining/Wilpinjong-Mine/Approvals,-Plans-Reports>) (and kept up to date). For further details refer to **Section 9.5** of the AQMP.

## 12 Review

Within three months of the submission of:

- a) The Annual Review;
- b) An air quality incident (exceedance) report;
- c) An Independent Environmental Audit;
- d) The approval of any modification to the conditions of this consent;
- e) A direction of the Secretary; and

WCPL will review, and if necessary revise, this AQMP to the satisfaction of the Secretary. For further details refer to **Section 10** of the AQMP.

## 13 Responsibilities

**Table 8** details the responsibilities relating to this SCMP.

**Table 8 Management Plan Responsibilities**

Responsibility	Task	Timing
<b>General/ Mine Manager</b>	Ensure that adequate resources are available to effectively implement requirements of this Management Plan	As required
<b>Mine Manager</b>	Identify areas where spontaneous combustion is more likely to occur	As required
	Assist OCE and Mining Superintendent to ensure all materials are correctly disposed of and conduct regular inspections of the coal seams and coal stockpiles to monitor for signs of spontaneous combustion to be managed appropriately	As detailed within this Plan
	Ensure the OCE, Mining Superintendent or CHPP Manager undertake collection of any relevant information associated with a spontaneous combustion outbreak	Following a spontaneous combustion outbreak
<b>Mining Engineer</b>	Consider spontaneous combustion in the design of mining operations and spoil emplacement areas	During mine planning
	Assist in the development of a strategy to manage spontaneous combustion for areas identified as requiring attention in consultation with the Mining Superintendent and Environmental Representative	As required
	Identify areas where spontaneous combustion is more likely to occur	As required
	Responsible for considering spontaneous combustion prone material & appropriate capping requirements in the planning of the final landform	During mine planning
	Responsibility of planning the tipping locations of carbonaceous materials	During mine planning
<b>CHPP Supervisor</b>	Conduct a visual inspection of the product coal stockpiles for evidence of the presence of spontaneous combustion and sign of heating.	Per shift
<b>Coal Quality</b>	Conduct a visual inspection of the ROM stockpiles for evidence of the	Daily

Responsibility	Task	Timing
<b>Engineer</b>	presence of spontaneous combustion update the “Weekly Stockpile Plan”	
<b>Environment and Community Manager</b>	Ensure that all spontaneous combustion related complaints are responded to in accordance with the Complaints Response Protocol	Following a complaint
	Notify the Mine Manager and Mining Superintendent of community issues associated with management of spontaneous combustion	Following a complaint
	Report any spontaneous combustion related incidents in accordance with legal requirements	Immediately for incidences that has caused, or threatens to cause, material harm to the environment
<b>Environmental Representative</b>	Consult with the Mining Superintendent and Mining Engineer about appropriate management of spontaneous combustion	As required
	Advise on approval and statutory requirements for environmental management of spontaneous combustion	As required
	Report on spontaneous combustion performance and Continuous Improvement Opportunities in the Annual Review	Annually (Annual Review)
<b>Health and Safety Manager</b>	Ensure management of spontaneous combustion is conducted in a safe and competent manner	As required
	Ensure management of spontaneous combustion complies with all statutory safety obligations	As required
<b>Surveyor</b>	Verify that plans for final rehabilitation and spontaneous combustion management comply with details pertaining to the current Mining Operations Plan	As required
	Measure and record the type and depth of cover of	Whenever possible
	Materials applied as inert capping on final landform surfaces Maintain records associated with management of spontaneous combustion (including recording of x, y and z coordinates of ‘hot’ material)	As required
<b>OCE</b>	Undertake inspections to identify and confirm spontaneous combustion events onsite (as per <b>Section 7</b> )	As required
	Coordinate corrective actions in accordance with <b>Section 8.2</b> of this Management Plan.	As required
	Manage any outbreaks or potential outbreaks as required	As required
	Consult with the Mining Supervisor about appropriate management of spontaneous combustion events	As required
<b>Production Superintendent</b>	Effective implementation of this Management Plan	As required
<b>Production Superintendent Technical Services Manager</b>	Ensure the OCE conducts inspections competently	As required
	Ensure key planning information is forwarded at appropriate times to the personnel responsible for managing spontaneous combustion events in the field	As required
	Assist the Mine Manager and Mining Supervisor in the collection of any relevant information associated with a spontaneous combustion event	As required
	Ensure all inert materials are correctly placed and not unduly wasted in areas where there is no spontaneous combustion	As required
	Annual Surveillance Report undertaken by Tailings Engineer as per <b>Section 7</b> .	Annually
<b>All employees and contractors</b>	Notify the OCE of any potential or actual spontaneous combustion events	As soon as possible after becoming aware of it

## 14 References

*Coaltech Research (undated) - PREVENTION AND CONTROL OF SPONTANEOUS COMBUSTION Best Practice Guidelines for Surface Coal Mines in South Africa*

*Department of Environment and Resource Management (DERM), 1995. Rehabilitation of spontaneous combustion areas.*

*Guney, M, 1968. Oxidation and spontaneous combustion of coal: Review of individual factors, Colliery Guardian, 216:105-143.*

*Mine Safety Operations Branch 2011, MDG 1006 Spontaneous Combustion Management Guideline*

## 15 Appendices

### 15.1 Appendix 1: Spontaneous Combustion Management Plan Requirements

#### Environmental Protection Licence - EPL 12425

Approval/Licence	Condition	Requirement	Section
EPL	E1.1	<p>The licensee must undertake continuous monitoring of the following pollutants at the Barigan Street, Wollar air monitoring unit:</p> <ul style="list-style-type: none"> <li>• Oxides of nitrogen;</li> <li>• Sulfur dioxide;</li> <li>• Hydrogen Sulfide;</li> <li>• Volatile organic compounds (VOCs) including benzene, toluene and xylene; and</li> <li>• Polycyclic aromatic hydrocarbons (PAHs)</li> </ul> <p>Monitoring must be undertaken in accordance with the relevant methods outlined in the EPA publication “Approved Methods – for the Sampling and Analysis of Air Pollutants in NSW” (2007).</p> <p>This monitoring must be undertaken until 30 June 2014.</p> <p>This data must be used to update the report titled “Ambient Air Monitoring Report – Wilpinjong Coal” prepared by Pacific Environmental Limited and dated 22 July 2013. Reference must be made in the report comparing ambient air monitoring results in Wollar to odour complaints received by the licensee and all known spontaneous events that occurred at the premises during the monitoring period.</p> <p>The updated report must be submitted to the Central West (Bathurst) office of the EPA by 29 August 2014.</p>	7.4
EPL	E1.2	<p>The licensee must undertake near source air monitoring at appropriate locations adjacent to the ‘Keylah’ and ‘Noise Bund’; overburden stockpiles. The monitoring must be undertaken:</p> <ul style="list-style-type: none"> <li>• At least twice, from either stockpile, during the period up to 30 June 2014;</li> <li>• For a sufficient length of time in order to collect a representative sample;</li> <li>• At a time when a spontaneous combustion event is occurring from the respective stockpile; and</li> <li>• Such that the samples are analysed for Nox, So2, H2S, PAHs and VOCs.</li> </ul> <p>Monitoring must be undertaken in accordance with the relevant methods outlined in the EPA publication “Approved Methods – for the Sampling and Analysis of Air Pollutants in NSW” (2007).</p>	7.4

Approval/Licence	Condition	Requirement	Section
		<p>This data must be used to update the report titled “Ambient Air Monitoring Report – Wilpinjong Coal” prepared by Pacific Environmental Limited and dated 22 July 2013.</p> <p>The updated report must be submitted to the Central West (Bathurst) office of the EPA by 29 August 2014.</p>	
EPL	E2.1	<p>Prior to the commencement of works associated with the removal of the Keylah dump at the premises, the licensee must develop a management plan which:</p> <ul style="list-style-type: none"> <li>• Is consistent with any recognised industry standards or guidelines;</li> <li>• Details how the removal will occur;</li> <li>• Defines the location of where the material will be relocated to;</li> <li>• Provided a timeframe for the completion of works;</li> <li>• Identified mitigation measures for any risks identified during the risk assessment process;</li> <li>• Details the proactive measures that will be utilised to prevent an occurrence of spontaneous combustion during the works, including but not necessarily limited to:               <ul style="list-style-type: none"> <li>○ Temperature and oxygen monitoring;</li> <li>○ A weather Trigger Action Response Plan (TARP); and</li> <li>○ A spontaneous combustion determination and response TARP which includes air quality management triggers and defined response actions;</li> </ul> </li> <li>• Details the contingency plans should additional resources be required;</li> <li>• Details air quality management trigger and define the actions performance indicators which will be utilised to minimise offsite impacts including odour and dust; and</li> </ul> <p>Outlines the complaint response procedure including verification and follow up action.</p>	Appendix 3
EPL	E2.2	<p>Prior to the commencement of works associated with the removal of the Keylah Dump at the premises, the licensee must review and update the Pollution Incident Response Management Plan for the premises to include incidents which relate to the removal of the Keylah Dump.</p>	Appendix 3
MOP	1	<p>Mining operations are to be undertaken in accordance with the MOP titled Wilpinjong Coal Project Open Cut Operations, Mining Operations Plan, 2014-2019, prepared by Wilpinjong Coal Pty Limited March 2014.</p>	2.1

## 15.2 Appendix 2: DPE Approval Pit 6 Development Footprint



Mr Ian Livingstone-Blevins  
Acting General Manager  
Peabody Australia

Via email: [iflood@peabodyenergy.com](mailto:iflood@peabodyenergy.com)

07/06/2021

Dear Mr Livingstone-Blevins

**Wilpinjong Coal Mine (SSD-6764)  
Pit 6 Development Footprint**

I refer to your correspondence dated 25 May 2021 and 4 June 2021 regarding a planned minor variation to the disturbance footprint of Pit 6 for the Wilpinjong Coal Mine (SSD 6764).

The Department has considered the information you have provided and notes that refinement to the Pit 6 detailed design would provide for recovery of additional coal and have benefits for post-mining landform establishment by reducing the extent of steep slopes required to tie into existing topography.

In particular, the Department has considered the following impacts of the proposed change:

- Disturbance of approximately 2.5 ha of native vegetation (mapped as Red Ironbark Forest – HU886; White Box Woodland (Shrubby) – HU824; and Grey Gum – Narrow-leaved Stringybark Forest - HU843). The Department notes that approximately 6.9 ha of the same vegetation communities that were approved for disturbance have not been disturbed in completed areas of Pit 5 and Pit 6.
- Disturbance of five Aboriginal heritage sites, including three rock shelters with PAD already contemplated for potential incidental disturbance in the approved Aboriginal Cultural Heritage Management Plan (ACHMP), and two open artefact sites. The Department notes that there are seven rock shelter sites that were approved for disturbance however were not disturbed in completed areas of Pit 5 and Pit 6.
- Wilpinjong Coal has advised that Registered Aboriginal Parties have been consulted in relation to the proposed change and that the ACHMP would be updated to reflect the status of these sites.
- There would be minimal change in visual impacts.

The Department agrees that the minor change to the footprint is generally in accordance with the project approval and the project general arrangement identified in the environmental assessment for the extension project, noting that minor changes to the disturbance footprint were contemplated following detailed design.

Consequently, the Secretary agrees that the changes to the Pit 6 open cut boundary and associated disturbance footprint is generally in accordance with the approved project (SSD 6764).

Please ensure that any relevant management plans are reviewed and submitted to the Department for review, prior to any works associated with the proposed changes.



If you wish to discuss the matter further, please contact Gabrielle Allan on 02 9585 6078 or at [gabrielle.allan@dpie.nsw.gov.au](mailto:gabrielle.allan@dpie.nsw.gov.au).

Yours sincerely



Stephen O'Donoghue  
Director  
Resource Assessments  
As nominee of the Planning Secretary

## 15.3 Appendix 3: Correspondence



Planning,  
Industry &  
Environment

Mr Ian Flood  
Manager Project Development and Approvals  
Wilpinjong Coal Pty Ltd  
1434 Ulan-Wollar Road  
Wilpinjong, NSW 2850

16/08/2021

Dear Mr Flood

**Wilpinjong Coal 2 (SSD 6764)  
Spontaneous Combustion Management Plan**

I refer to the revised Spontaneous Combustion Management Plan which was submitted in accordance with Condition 20 (g) of Schedule 3 of the condition of consent for the Wilpinjong Coal 2 (SSD-6764-PA-42).

The Department has carefully reviewed the document and is satisfied that it generally meets the requirements of the condition.

Accordingly, the Planning Secretary has approved the revised Spontaneous Combustion Management Plan (Revision 7.1, dated June 2021). Please ensure that the approved plan is placed on the project website at the earliest convenience.

If you wish to discuss the matter further, please contact Charissa Pillay on 02 99955944.

Yours sincerely

A handwritten signature in black ink, appearing to be 'S O'Donoghue'.

Stephen O'Donoghue  
Director  
Resource Assessments  
As nominee of the Planning Secretary



DOC21/545167

Mr Kieren Bennetts

Wilpinjong Coal Mine

Via E-mail: [kbennetts@peabody.energy.com](mailto:kbennetts@peabody.energy.com)

12 July 2021

Dear Mr Bennetts

### MANAGEMENT PLANS Wilpinjong Coal Mine Extension

I refer to the miscellaneous plans, prepared for the Wilpinjong Coal Mine Extension SSD-6784-PA-32, PAE 23174557, 23178027 prepared to satisfy the conditions of State Significant Development approval number 7016 (SSD 6784), and provided to the NSW Environment Protection Authority (EPA) for consultation.

The EPA encourages the development of environmental management plans to ensure that proponents have determined how they will meet their statutory obligations and environmental objectives as specified by any project approval and/or the conditions of an environment protection licence.

Please note that it is not the EPA's role to endorse these reports and plans given the EPA sets conditions and criteria for environmental protection and management and therefore cannot be directly involved in the development of strategies to comply with such conditions/criteria. The EPA therefore has no comments on the management plans provided.

If you have any questions regarding this matter, please contact Regional South (Bathurst) Office of the EPA on 6333 3800 or via e-mail at [EPA.Southopsregional@epa.nsw.gov.au](mailto:EPA.Southopsregional@epa.nsw.gov.au).

Yours sincerely

A handwritten signature in black ink that reads 'Sandra Jones'.

**Dr Sandie Jones**  
Manager- Regional South Operations  
Regulatory Operations Regional

Phone 131 555

Phone +61 2 6333 3800

TTY 133 677

ABN 43 692 285 758

PO Box 1388

Bathurst NSW 2795  
Australia

L102,346 Panorama

Avenue  
Bathurst NSW 2795  
Australia

[info@epa.nsw.gov.au](mailto:info@epa.nsw.gov.au)

[www.epa.nsw.gov.au](http://www.epa.nsw.gov.au)



SF17/8470

Mr Blair Jackson  
General Manager  
Wilpinjong Coal Mine  
Locked Bag 2005  
MUDGEE NSW 2850

Attention: Kieren Bennetts

22 June 2017

Dear Mr Jackson

**Wilpinjong Coal Mine - Revised Management Plans**

I refer to the various revised management plans for the Wilpinjong Coal Mine (the Mine) received by the Environment Protection Authority (EPA) on 1 June 2017.

Thank you for forwarding the draft air, blast, noise and water management plans to the EPA. The EPA encourages the development of Environmental Management Plans/Programs to ensure that proponents have determined how they will meet their statutory obligations and environmental objectives as specified by any Project/Development Approval and/or the conditions of an environment protection licence. Please note the EPA does not review these plans/programs (unless in circumstances deemed necessary) as the role of the EPA is to set conditions/criteria for environmental protection and management, not to be directly involved in the development of strategies to comply with such conditions/criteria. As such the EPA will not be reviewing or endorsing the Plans.

As a management tool, such plans should assist the Mine in meeting their commitment to statutory compliance and wider environmental management and where appropriate should be integrated with other operational or management plans. The EPA recommends that such plans be audited to an industry standard or certified to the ISO 14001 standard (if applicable) as part of any overall environmental management system.

Should you have any further enquiries in relation to this matter please contact Ms Sheridan Ledger at the Central West (Bathurst) Office of the EPA by telephoning (02) 6332 7608.

Yours sincerely



**DARRYL CLIFT**  
Head Central West Unit  
Environment Protection Authority

---

PO Box 1388 Bathurst NSW 2795  
Level 2 203-209 Russell St Bathurst  
Tel: (02) 6332 7600 Fax: (02) 6332 7630  
ABN 43 692 285 758  
[www.epa.nsw.gov.au](http://www.epa.nsw.gov.au)

---

Kieren Bennetts  
Environment and Community Manager  
Wilpinjong Coal  
Locked Bag 2005  
Mudgee, NSW, 2850

07/09/2020

Dear Mr Bennetts

**Wilpinjong Coal Mine Extension (SSD-6764-PA-12)  
Various Management Plans**

I refer to the various management plan submitted in accordance with Development Consent for the Wilpinjong Coal Mine Extension (SSD-6764).

The Department has carefully reviewed these documents and is satisfied some of these management plans meet the requirements of the relevant Conditions of Consent.

Accordingly, the Planning Secretary has approved the following documents:

- Blast Management Plan (Version 7, dated August 2020) - Schedule 3 Condition 14
- Blast Fume Management Plan (Version 4, dated August 2020) - Schedule 3 Condition 14
- Biodiversity Management Plan (Version 6, dated August 2020) - Schedule 3 Condition 42
- Noise Management Plan (Version 5, dated August 2020) - Schedule 3 Condition 5
- Spontaneous Combustion Management Plan (Version 6, dated August 2020) - Schedule 3 Condition 20
- Air Quality Management Plan (Version 6, dated August 2020) - Schedule 3 Condition 20
- Environmental Management Strategy (Version 7, dated August 2020) - Schedule 5 Condition 1

Given proposed revisions the following management plans should be resubmitted individually, and consultation undertaken with the appropriate sections of NSW Heritage, either prior to submission, or via the Major Projects portal:

- Historic Heritage Management Plan
- Aboriginal Cultural Heritage Management Plan

Given proposed revisions to groundwater monitoring network, clean water diversions and water balance variations, the following management plans should be provided as one submission following consultation undertaken with DPIE Water and NRAR, either prior to submission, or via the Major Projects portal:

- Water Management Plan
- Groundwater Management Plan
- Surface Water Management Plan
- Site Water Balance

Please ensure that these approved plans are placed on the project website at the earliest convenience.

In future please provide each management plan as a separate submission via the Major Projects portal to allow review and approval.

If you wish to discuss the matter further, please contact Wayne Jones on 6575 3406.

Yours sincerely



Stephen O'Donoghue  
Director  
Resource Assessments  
As nominee of the Planning Secretary



Mr Kieren Bennetts  
Environment and Community Manager  
Wilpinjong Coal  
Locked Bag 2005  
Mudgee NSW 2850

Dear Mr Bennetts

**Wilpinjong Coal Mine (05\_0021)  
Management Plans**

I refer to the revised management plans submitted to the Department following approval of the recent modification application for the Wilpinjong Coal Project (05\_0021).

The Department has reviewed the management plans and is satisfied that the following plans are adequate:

- Noise Management Plan;
- Blast Management Plan;
- Air Quality Management Plan;
- Site Water Management Plan;
- Biodiversity Management Plan;
- Aboriginal Cultural Heritage Management Plan;
- Waste Management Plan;
- Spontaneous Combustion Management Plan; and
- Environmental Management Strategy.

Consequently, the Secretary approves the above mentioned plans.

If you wish to discuss the matter further, please contact Matthew Riley on 9274 6339.

Yours sincerely,

A handwritten signature in blue ink that reads 'Michael' followed by a stylized signature.

Mike Young  
Director  
Resource Assessments  
As nominee of the Secretary



Contact: Chris Schultz  
Phone: 02 4224 9478  
Fax: 02 4224 9470  
Email: [Christopher.Schultz@planning.nsw.gov.au](mailto:Christopher.Schultz@planning.nsw.gov.au)

Mr Kieren Bennetts  
Environment and Community Manager  
Wilpinjong Coal Mine  
Locked Bag 2005  
MUDGEES NSW 2850

Dear Mr Bennetts,

### Wilpinjong Coal Mine (PA 05\_0021) Approval of Management Plans

I refer to the following Management Plans required under Project Approval 05\_0021 (the approval), submitted to the Department for consideration:

- Noise Management Plan – Document No. WI-ENV-MNP-0001 dated May 2014;
- Blast Management Plan - Document No. WI-ENV-MNP-0003 dated May 2014, including the Blast Fume Management Strategy dated May 2014;
- Water Management Plan - Document No. WI-ENV-MNP-0006 dated November 2014, including the Site Water Balance, Erosion and Sediment Control Plan, Surface Water Management and Monitoring Plan, Groundwater Monitoring Program and Surface and Groundwater Response Plan; and
- Spontaneous Combustion Management Plan – Document No. WI-ENV-MNP-0010 dated May 2015.

The Department has reviewed the plans and is satisfied that they generally address the requirements set out in the relevant conditions of the approval. Accordingly the Secretary has approved the management plans.

It is requested that the issues identified in Attachment 1 are addressed either prior to the publishing of the management plans on the website or in the next revision of the document.

A copy of these management plans is to be placed on the website in accordance with Schedule 5, Condition 11 of the approval within one month of the date of this letter.

Should you wish to discuss the above matter, please contact Chris Schultz, Senior Compliance Officer, on 02 4224 9478 or [Christopher.Schultz@planning.nsw.gov.au](mailto:Christopher.Schultz@planning.nsw.gov.au).

Yours sincerely

A handwritten signature in black ink, appearing to read 'K O'Reilly 9/15/16'.

Katrina O'Reilly  
**Team Leader Compliance Southern Region**  
*as nominee of the Secretary*



## 15.4 Appendix 4: Propensity for Spontaneous Combustion (Lab Results)

Page 1 of 3

Report No. 210003669

### ANALYSIS AND TESTING REPORT THIESS PTY LTD

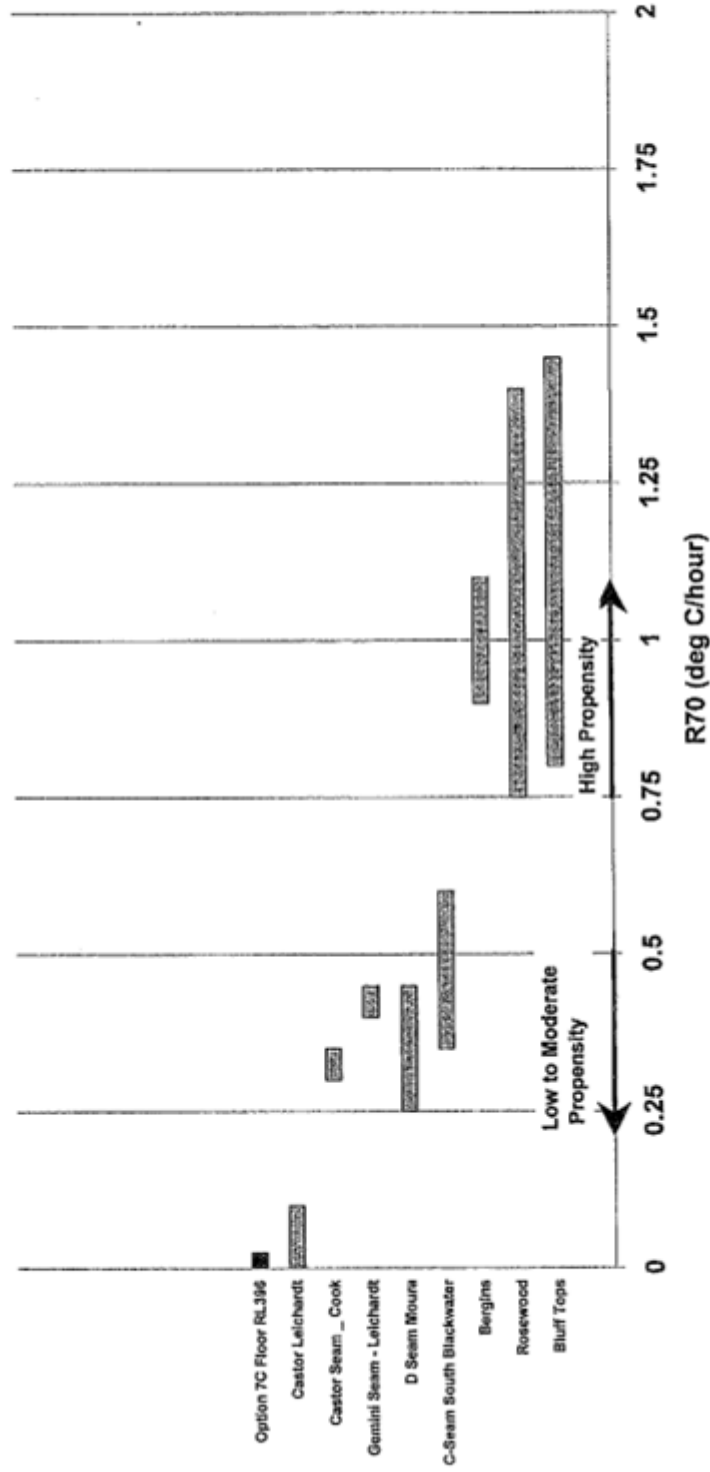
#### Adiabatic Self-Heating Test

Sample Description: Rail Loop Adjacent to chainage 2085 in layout  
option 7c Floor RL396

Time (Hrs)	Temperature (°C)
0	40.0
1	40.0
5	40.0
9	40.0
13	40.0
17	40.0
21	40.0
25	40.0
29	40.0
33	40.0
37	40.0
41	40.0
45	40.0
49	40.0
53	40.0
57	40.0
61	40.0
65	40.0
69	40.0
70	40.0

$$R^2 = \frac{\text{Temp}}{\text{Time}} (40.0 - 40.0) \frac{0.0}{30} = 0.00 \text{ } ^\circ\text{C/hr}$$

## Comparison With Other Coals



## APPENDIX A THE ACIRL ADIABATIC SELF-HEATING TEST

The coal sample to be tested is prepared by crushing to 200 microns and drying in nitrogen at about 105 C. The coal sample is allowed to cool after drying before being loaded into the vacuum flask reaction vessel. Once loaded, the reaction vessel is sealed with a push fit stopper through which pass a gas inlet, an exhaust, and a double platinum bulb resistance thermometer. As soon as practical, a flow of nitrogen is established through the coal sample in order to prevent pre-oxidation.

The reaction vessel is then placed into a fan forced oven. The temperature of the oven is maintained constant by an electronic controller until the sample temperature stabilises at 40 C. The gas supply which passes through a copper coil housed in the oven to pre-heat it, is then changed from nitrogen to oxygen. The function of the electronic controller is also changed to adiabatic mode in which it holds the oven temperature as close to the coal temperature as possible. The temperature of the coal is recorded during the self-heating period until 70 °C is exceeded or until 72 hours have expired since admission of oxygen. The rate of temperature rise gives a relative measure of the oxidation rate of the coal. Some typical self-heating curves are shown in Figure A.1.

To quantify the propensity of the coal to spontaneous combustion, the average rate of self-heating from 40 C to 70 C ( $R_{70}$ ) is used as an index. As  $R_{70}$  increases, reactivity of the coal, and hence its propensity to spontaneous combustion increases.

For a range of Australian bituminous coals previously tested (Humphreys, 1979 and Humphreys et al, 1981), the range of  $R_{70}$  self-heating rates observed was from 0 C/hour to 1.45 C/hour. See Figure A.2.  $R_{70}$  values greater than 0.5 °C/h were obtained with coals having some history of spontaneous combustion problems in practice.

### REFERENCES

HUMPHREYS, D.R.

A study of Propensity of Queensland Coal to Spontaneous Combustion, M.Sc. Thesis, University of Queensland, 1979

HUMPHREYS, D.R., ROWLANDS, D. and CUDMORE, J.F.

Proceedings of As I,M,M. Symposium on "Ignition, Explosion and Fires in Coal Mines", 1981,

## 15.5 Appendix 5: Risk Assessment Outcomes

Process Area	Risk Identified	Current controls	Additional Controls
<b>Out of Pit Dumps</b>	Rehabilitation failure of final landform(slumping, tree mortality, failed pastures, excessive erosion) (long term)	<ul style="list-style-type: none"> <li>• Mining Operations Plan</li> <li>• Survey of FSL minus 5m</li> <li>• Biodiversity Monitoring Plan (including rehab monitoring)</li> <li>• Rehabilitation inspections</li> <li>• Spontaneous Combustion propensity testing</li> <li>• Annual Review and Inspection</li> <li>• Mine Planning</li> <li>• Carbonaceous material surface limit (e.g. 20 metres of inert material along western face - Duffy Dump (to allow for mine closure reshaping requirement)</li> </ul>	<ul style="list-style-type: none"> <li>• Map existing spontaneous combustion hot spots in all out of pit dumps (OOPDs)</li> <li>• Undertake thermal imaging of site to identify potential spontaneous combustion hotspots</li> <li>• Review current capping strategy - investigate use of thicker layer of inert capping material</li> <li>• Organise a chemical composition assessment of onsite inert material</li> <li>• Implement rehab drainage commitments as provided by Tech Services</li> <li>• Consider drainage options for spontaneous combustion in next review of Mining Operations Plan e.g. adjacent to Duffy's Dump</li> <li>• Consider all dump designs to include the requirement of a minimum of 3m of inert capping material</li> </ul>
	Unacceptable visual amenity impact during rehandling operations (dust, ash, smoke, steam, lighting)	<ul style="list-style-type: none"> <li>• Air Quality Management Plan</li> <li>• Predictive weather forecasting (daily email)</li> <li>• Weather monitoring</li> <li>• Air Quality Monitoring Program</li> <li>• Community and regulator consultation</li> </ul>	<ul style="list-style-type: none"> <li>• Develop temporary remediation plan for Duffy's Dump (including drainage design)</li> <li>• Continued development of screening i.e. topsoil bund or vegetation bund.</li> </ul>
	Distinctive sulphur odour that community finds offensive	<ul style="list-style-type: none"> <li>• Community Complaints Protocol</li> <li>• Community/stakeholder meetings</li> <li>• CCC meetings</li> <li>• Gas/odour monitoring (including point source) in community</li> <li>• Predictive weather forecasting (daily email)</li> <li>• Weather monitoring</li> </ul>	<ul style="list-style-type: none"> <li>• WCPL will develop and distribute a community fact sheet on spontaneous combustion</li> <li>• WCPL will investigate chemical suppression options to reduce sulphur odour and act as fire retardant. WCPL will trial the RT60 Super Wetter, and FLAME-OUT fire retardants during operations</li> </ul>
	Excessive carbonaceous material within new OOPDs	<ul style="list-style-type: none"> <li>• Survey of FSL minus 5m</li> <li>• Rehab inspections</li> <li>• Dump design</li> <li>• LOM planning does not include OOPDs</li> <li>• LOM dumping strategy</li> <li>• Dump designs which incorporate carbonaceous layers to FSL-2m. This is then controlled via the Leica system and</li> </ul>	<ul style="list-style-type: none"> <li>• No additional controls identified</li> </ul>

Process Area	Risk Identified	Current controls	Additional Controls
		further survey activities.	
<b>ROM Stockpiles</b>	Fire outbreak in ROM stockpiles	<ul style="list-style-type: none"> <li>• Tyre bath</li> <li>• Weekly coal quality inspections</li> <li>• CHPP shift supervisor inspections</li> <li>• Stockpile Age Tracking</li> <li>• Spontaneous Combustion propensity testing</li> <li>• Process coal through CHPP</li> <li>• Thermo graphic camera</li> <li>• Procedure (TARP) for equipment damage and personnel safety</li> <li>• Emergency Response Procedure</li> <li>• Community Complaints Protocol</li> <li>• Experienced operators trained to identify and manage potential combustible material</li> <li>• Predictive weather forecasting (daily email)</li> <li>• Daily meetings (weather - look ahead as well as stockpile age and results from weekly inspections (observations))</li> <li>• General community and regulatory updates</li> <li>• Reducing ROM stocks</li> </ul>	<ul style="list-style-type: none"> <li>• Develop ROM Stockpile Management Plan (including ROM inspection Procedure)</li> <li>• Develop fire outbreak management procedure for coal stockpiles (traffic light TARP)</li> <li>• Undertake thermal imaging of site to identify potential spontaneous combustion hotspots</li> <li>• Organise training for operators on identification of spontaneous combustion hotspots/indicators</li> <li>• Consider reorientating ROM stockpiles and battering face on prevailing wind side (for high risk coal)</li> <li>• Investigate chemical suppression options to reduce sulphur odour and act as fire retardant</li> </ul>
	Distinctive sulphur odour that community finds offensive	<ul style="list-style-type: none"> <li>• As per "Out of Pit Dumps" above</li> </ul>	<ul style="list-style-type: none"> <li>• As per "Out of Pit Dumps" above</li> </ul>
<b>Product Stockpiles</b>	Spontaneous combustion outbreak in Product stockpiles	<ul style="list-style-type: none"> <li>• Weekly coal quality inspections</li> <li>• CHPP shift supervisor inspections</li> <li>• Stockpile Age Tracking</li> <li>• Spontaneous Combustion propensity testing</li> <li>• Thermo graphic camera</li> <li>• Emergency Response Procedure</li> <li>• Community Complaints Protocol</li> <li>• Experienced operators trained to identify and manage potential combustible material</li> </ul>	<ul style="list-style-type: none"> <li>• Develop fire outbreak management procedure for coal stockpiles (traffic light TARP)</li> <li>• Undertake thermal imaging of site to identify potential spontaneous combustion hotspots</li> <li>• Organise training for operators on identification of spontaneous combustion hotspots/indicators</li> <li>• Develop coal rotation procedure for product stockpile</li> <li>• Update CHPP daily plan with product stockpile ages (table)</li> </ul>

Process Area	Risk Identified	Current controls	Additional Controls
		<ul style="list-style-type: none"> <li>Predictive weather forecasting (daily email)</li> <li>Daily meetings (weather - look ahead)</li> <li>General community and regulatory updates</li> <li>Product Stockpile Management Plan and Procedure</li> </ul>	
	Distinctive sulphur odour that community finds offensive	<ul style="list-style-type: none"> <li>As per "Out of Pit Dumps" above</li> </ul>	<ul style="list-style-type: none"> <li>As per "Out of Pit Dumps" above</li> </ul>
<b>In Pit Dumps</b>	Distinctive sulphur odour that community finds offensive	<ul style="list-style-type: none"> <li>As per "Out of Pit Dumps" above</li> </ul>	<ul style="list-style-type: none"> <li>As per "Out of Pit Dumps" above</li> </ul>
<b>Reject Emplacement Areas</b>	Rehabilitation failure of final landform (slumping, tree mortality, failed pastures, excessive erosion) (long term)	<ul style="list-style-type: none"> <li>Mining Operations Plan</li> <li>Survey of FSL minus 2m</li> <li>Biodiversity Monitoring Plan (including rehab monitoring)</li> <li>Rehab inspections</li> <li>LOM Tailings Strategy management actions ie cast blasting and dozer push.</li> <li>Dump designs which incorporate carbonaceous layers to FSL-2m. This is then controlled via the Leica system and further survey activities.</li> <li>Spontaneous Combustion propensity testing</li> <li>Annual Review and Inspection</li> <li>Mine Planning</li> <li>Carbonaceous material surface limit (e.g. 20 metres of inert material along western face - Duffy Dump (to allow for mine closure reshaping requirement))</li> </ul>	<ul style="list-style-type: none"> <li>No additional controls identified</li> </ul>
	Distinctive sulphur odour that community finds offensive	<ul style="list-style-type: none"> <li>Community Complaints Protocol</li> <li>CCC meetings</li> <li>Gas/odour monitoring (including point source) in community and reports</li> <li>Predictive weather forecasting (daily email)</li> <li>Weather monitoring</li> </ul>	<ul style="list-style-type: none"> <li>No additional controls identified</li> </ul>

Process Area	Risk Identified	Current controls	Additional Controls
	Unacceptable visual amenity impact (dust, smoke, steam)	<ul style="list-style-type: none"> <li>• Air Quality Management Plan</li> <li>• Predictive weather forecasting (daily email)</li> <li>• Weather monitoring</li> <li>• Community and regulator consultation</li> <li>• Air Quality Monitoring Program</li> </ul>	<ul style="list-style-type: none"> <li>• No additional controls identified</li> </ul>
	Excessive carbonaceous material within new reject emplacement areas	<ul style="list-style-type: none"> <li>• Survey of FSL minus 2m</li> <li>• Rehab inspections</li> <li>• Reject emplacement area design</li> <li>• LOM dumping strategy</li> </ul>	<ul style="list-style-type: none"> <li>• No additional controls identified</li> </ul>
<b>Tailings Storage Areas</b>	Rehabilitation failure of final landform (slumping, tree mortality, failed pastures, excessive erosion) (long term)	<ul style="list-style-type: none"> <li>• Mining Operations Plan</li> <li>• Survey of FSL minus 2m</li> <li>• Biodiversity Monitoring Plan (including rehab monitoring)</li> <li>• Rehab inspections</li> <li>• Spontaneous Combustion propensity testing</li> <li>• Annual Review and Inspection</li> <li>• Mine Planning</li> <li>• LOM Tailings Strategy</li> <li>• Tailings Dam Design Reports (s100 approvals)</li> <li>• Tailings Storage Facility Operation and Maintenance Manual</li> </ul>	<ul style="list-style-type: none"> <li>• No additional controls identified</li> </ul>
	Distinctive sulphur odour that community finds offensive	<ul style="list-style-type: none"> <li>• Community Complaints Protocol</li> <li>• CCC meetings</li> <li>• Gas/odour monitoring (including point source) in community and reports</li> <li>• Predictive weather forecasting (daily email)</li> <li>• Weather monitoring</li> </ul>	<ul style="list-style-type: none"> <li>• No additional controls identified</li> </ul>
	Unacceptable visual amenity impact (dust, smoke, steam)	<ul style="list-style-type: none"> <li>• Air Quality Management Plan</li> <li>• Predictive weather forecasting (daily email)</li> <li>• Weather monitoring</li> </ul>	<ul style="list-style-type: none"> <li>• No additional controls identified</li> </ul>



Process Area	Risk Identified	Current controls	Additional Controls
		<ul style="list-style-type: none"> <li>Community and regulator consultation</li> <li>Air Quality Monitoring Program</li> </ul>	
<b>High Walls</b>	Distinctive sulphur odour that community finds offensive	<ul style="list-style-type: none"> <li>Community Complaints Protocol</li> <li>CCC meetings</li> <li>Gas/odour monitoring (including point source) in community and reports</li> <li>Predictive weather forecasting (daily email)</li> <li>Weather monitoring</li> <li>Exposed seams sealed with inert material</li> </ul>	<ul style="list-style-type: none"> <li>Develop Final Void Management Plan</li> </ul>
	Spontaneous combustion fire in highwall	<ul style="list-style-type: none"> <li>Exposed seams sealed with inert material</li> <li>OCE inspections</li> </ul>	<ul style="list-style-type: none"> <li>Develop Final Void Management Plan</li> </ul>
	Unacceptable visual amenity impact (dust, smoke, steam)	<ul style="list-style-type: none"> <li>Quality Management Plan</li> <li>Predictive weather forecasting (daily email)</li> <li>Weather monitoring</li> <li>Community and regulator consultation</li> <li>Air Quality Monitoring Program</li> </ul>	<ul style="list-style-type: none"> <li>No additional controls identified</li> </ul>
<b>Windrows</b>	Distinctive sulphur odour that community finds offensive	<ul style="list-style-type: none"> <li>As per "High Walls" above</li> </ul>	<ul style="list-style-type: none"> <li>No additional controls identified</li> </ul>
	Unacceptable visual amenity impact (dust, smoke, steam)	<ul style="list-style-type: none"> <li>As per "High Walls" above</li> </ul>	<ul style="list-style-type: none"> <li>No additional controls identified</li> </ul>
	Excessive carbonaceous material within new windrows	<ul style="list-style-type: none"> <li>Windrow design</li> </ul>	<ul style="list-style-type: none"> <li>No additional controls identified</li> </ul>

## 15.6 Appendix 6: Air Assessment Criteria

Table 2-1: Assessment criteria

Pollutant	Averaging period (basis of criteria)	Goal		Source
		ppm	mg/m <sup>3</sup>	
Carbon monoxide (CO)	15 minutes	87	100	NSW EPA
	1 hour	25	30	NSW EPA
	8 hours	9	10	NEPM
Toluene (VOC)	1 hour	0.09	0.36	NSW EPA
	3 minutes (odour)	0.17	0.65	EPA Victoria
	3 minutes (toxicity)	3.2	12.3	EPA Victoria
Xylenes (VOC)	1 hour	0.04	0.19	NSW EPA
	3 minutes (odour)	0.08	0.35	EPA Victoria
	3 minutes (toxicity)	2.7	11.4	EPA Victoria
Pollutant	Averaging period	ppm	µg/m <sup>3</sup>	
Sulfur dioxide (SO <sub>2</sub> )	10 minutes	0.25	712	NSW EPA
	1 hour	0.20	570	NEPM
	24 hours	0.08	228	NEPM
	Annual	0.02	60	NEPM
Nitrogen dioxide (NO <sub>2</sub> )	1 hour	0.12	246	NEPM
	Annual	0.03	62	NEPM
Benzene (VOC)	1 hour	0.009	0.029	NSW EPA
	3 minutes (carcinogen)	0.017	53	EPA Victoria
Hydrogen sulfide (H <sub>2</sub> S)	1 hour	0.005	7	NZ MfE
PAHs (as benzo[a]pyrene)	1 hour	N/A	0.4	NSW EPA

mg/m<sup>3</sup> – milligrams per cubic metre  
 ppm – parts per million  
 µg/m<sup>3</sup> – micrograms per cubic metre

(Source: Pacific Environment Ltd, 2013)