



WILPINJONG COAL PTY LTD

Environment Protection Licence (EPL) 12425

[Link to Environment Protection Licence EPL12425](#)

**LICENCE MONITORING DATA
MONTHLY SUMMARY REPORT**

for

1 September 2018 to 30 September 2018

Air Monitoring

Air quality surrounding the Wilpinjong Coal Mine is monitored using:

1. tapered element oscillating microbalances (TEOM);
2. high volume air samplers (HV); and
3. dust deposition gauges (DG).

In terms of the above equipment:

1. the TEOM and HVAS measure fine dust particles up to 10 microns in diameter (i.e. PM10); and
2. the DG measure the total dust deposited in the gauge during the sample period.

All are influenced by mining as well as non-mining activities in the local area.

The location of the above monitoring equipment in relation to Wilpinjong Coal Mine is shown in Figures 6 and 8.

A summary of the monitoring results for the month is provided in Table 1 and the yearly trends are also shown in Figures 1 to 3.

For comparison with Figures 2 and 3, Figure 4 displays the Regional 24Hr PM10 Average. PM10 dust levels have been recorded in Bathurst and Merriwa by NSW EPA from 1 September 2017 to 31 August 2018.

Table 1 - Air Monitoring

EPL ID No.	Monitoring Point ID.	Pollutant	Unit of Measure	Monitoring Frequency required by EPL	No. of times measured during month	Min. Value	Max. Value	Mean Value	Measurement	Annual Average	Limit	Exceed* (yes/no)	Date Last Sampled	Date Reported
3	DG4	Particulates - TSM	grams per square metre per month	Monthly	1				3.7				31/09/2018	07/10/18
4	DG5	Particulates - TSM	grams per square metre per month	Monthly	1				3.2	1.4	4.0	No	31/09/2018	07/10/18
6	DG8	Particulates - TSM	grams per square metre per month	Monthly	1				3.5				31/09/2018	07/10/18
9	DG11	Particulates - TSM	grams per square metre per month	Monthly	1				3.3				31/09/2018	07/10/18
17	DG15	Particulates - TSM	grams per square metre per month	Monthly	1				2.6				31/09/2018	07/10/18
13	HV1	PM10	micrograms per cubic metre	Every 6 days	5	3.0	15.5	10.0			50	No	28/09/18	27/10/18
19	HV4	PM10	micrograms per cubic metre	Every 6 days	4	3.0	22.8	13.0			50		28/09/18	27/10/18
20	HV5	PM10	micrograms per cubic metre	Every 6 days	5	2.7	28.9	16.3			50		28/09/18	27/10/18
22	TEOM3	PM10	micrograms per cubic metre	Continuous (24 Hr Average)	100.0%	5.5	29.7	11.9			50	No		
23	TEOM4	PM10	micrograms per cubic metre	Continuous (24 Hr Average)	100.0%	1.6	35.3	14.8			50			

Notes:

- Limits specified in the above table are from Development Consent SSD-6764.
- HV4 had a power outage on 28 September. The sample was not analysed.

Figure 1a. DG Results - 12 Month Trend

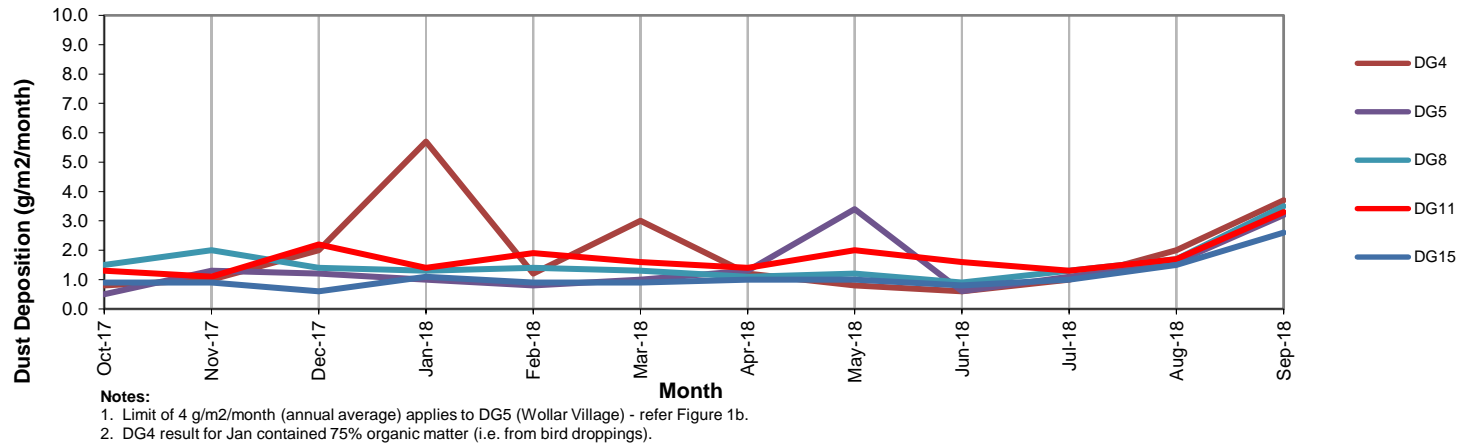


Figure 1b. DG 5 Results - Annual Average

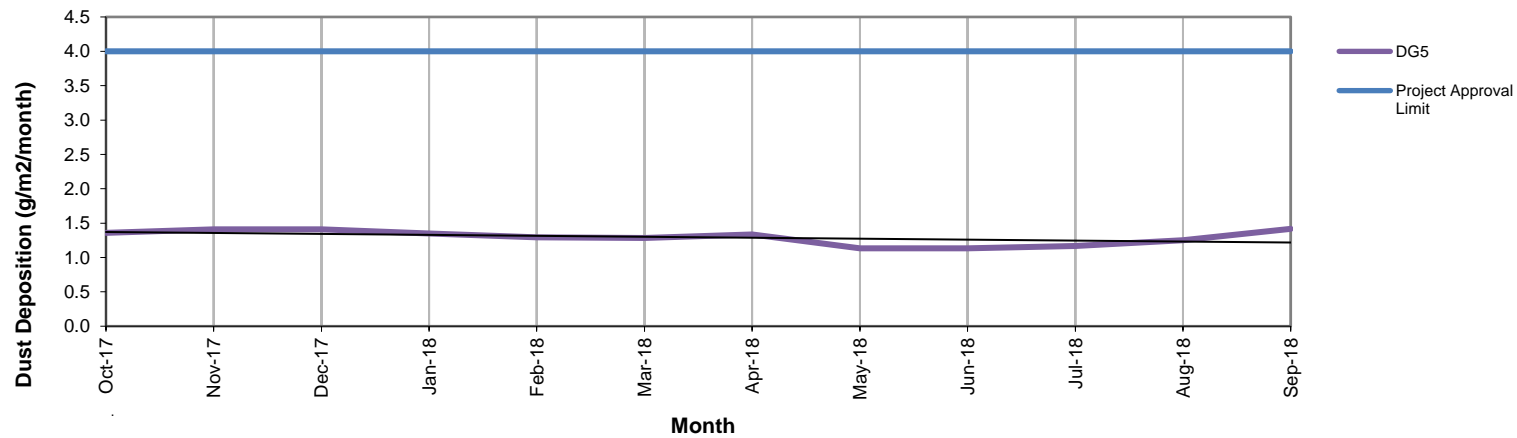
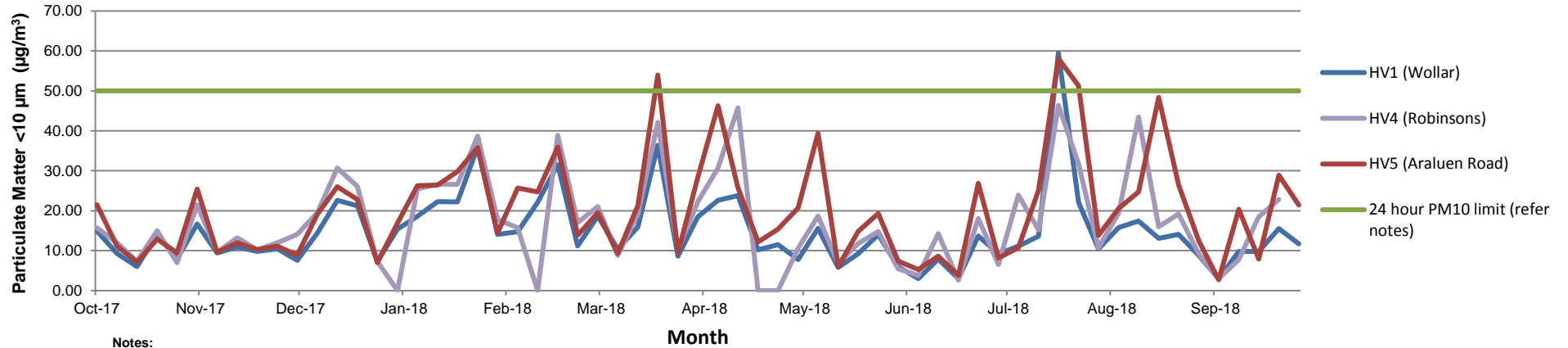


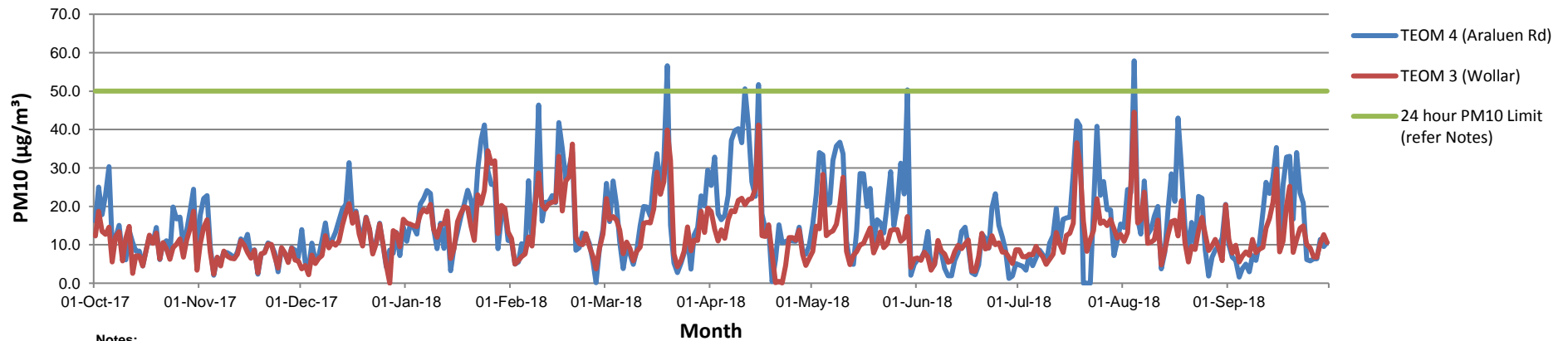
Figure 2. HV (PM10) Results - 12 Month Trend



Notes:

1. Limit doesn't apply for extraordinary events such as bushfires, prescribed burning, or dust storms.
2. A power outage prevented dust samples being collected from HV4 : 1 January 2018, 12 February 2018, 19 & 25 April 2018 (power outage resulted in HV fault on 25 April 2018) and 28 September.
3. Recorded PM10 dust levels above 50 µg/m³ recorded in March and July caused by regional dust events - refer EPA PM10 dust graph on page 6 of this report.

Figure 3. TEOM (PM10) Results - 12 Month Trend

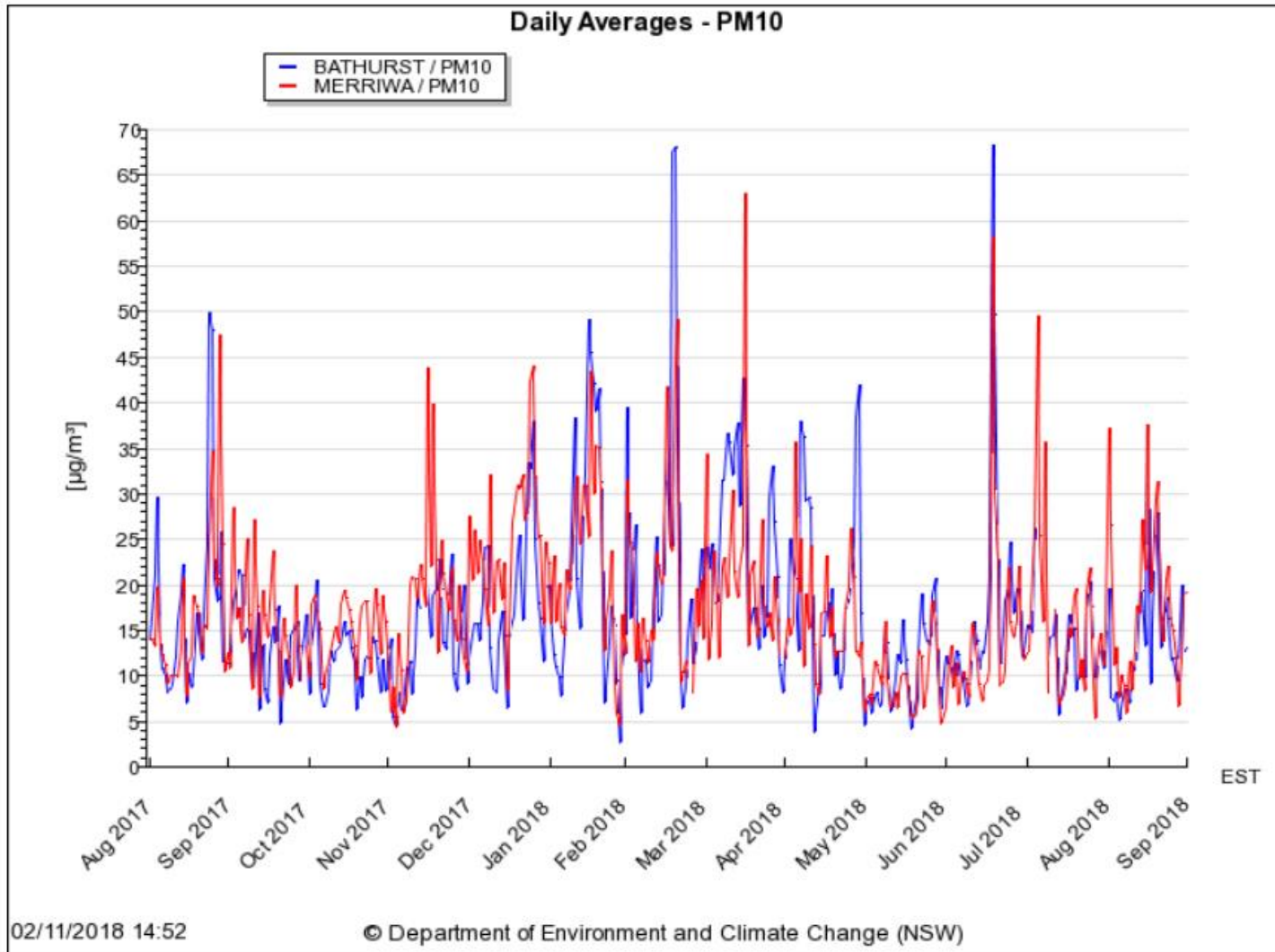


Notes:

1. Limit doesn't apply for extraordinary events such as bushfires, prescribed burning or dust storms
2. TEOM 4 (Araluen Rd) influenced by dust from Araluen Road generally during stable atmospheric conditions (i.e. temperature inversions)
3. Elevated PM10 dust levels recorded in March, April, May and July 2018 due to regional dust events - refer EPA PM10 dust graph on page 6 of this report.
4. TEOM 4 offline from July 20 to July 23 due to instrument fault and repairs.

Figure 4.
Daily
Average
Results

PM10
Regional



Surface Water Monitoring

Surface water runoff is isolated and diverted around disturbed areas through the construction of water diversion bunds. Runoff from disturbed areas is diverted into on-site water retention dams.

A Reverse Osmosis (RO) Plant treats all water from the retention dams before it is discharged to Wilpinjong Creek. The EPL specifies limits for the quantity and quality of water that may be discharged from the site.

A summary of the water analysis results for the month in provided in Table 2.

Table 2

EPL ID No.	Monitoring Point ID.	Pollutant	Unit of Measure	Monitoring Frequency required by EPL	No. of times measured during month	Min. Value	Max. Value	Mean Value	Measurement	Limit	Exceed ⁿ (yes/no)	Date Last Sampled	Date Last Reported
24	RO Plant Discharge	Conductivity	microSiemens per centimetre (uS/cm)	Continuous during discharge	100%	112.0	340.0	245.5		500	No		
		Oil and Grease	milligrams per litre (mg/L)	Weekly during any discharge	8	<5	<5	<5		10.0	No	28-Sep-2018	17/10/18
		pH	pH Unit	Continuous during discharge	100%	6.9	7.2	7.1		≥6.5≤8.5	No		
		Total Suspended Solids	milligrams per litre (mg/L)	Weekly during any discharge	8	<1	<1	<1		50	No	28-Sep-2018	17/10/18
		Volume discharged	megalitres per day	Continuous during discharge	100%	0.05	1.65	0.95		5.0	No		

Noise Monitoring

Environmental noise monitoring (“monitoring”) is carried out monthly.

The purpose of the monitoring is to assess whether mining operations are consistent with the objectives of the EPL and the development consent conditions.

In terms of this monitoring, it is undertaken:

1. by an independent noise consultant;
2. during the night-time; and
3. at the sites shown in Figure 9.

On pages 9 and 10 of this report are the noise levels and findings from the consultant’s report.

Table 4.2: $L_{Aeq,15\text{minute}}$ GENERATED BY WCP AGAINST PROJECT SPECIFIC CRITERIA – SEPTEMBER 2018

Location	Start Date and Time	Wind Speed m/s ^{1,2}	Stability Class ^{1,2}	Criterion dB	Criterion Applies? ^{2,3}	WCP $L_{Aeq,15\text{min}}$ dB ^{4,5}	Exceedance ^{5,6}
N6	21/09/2018 00:48	0.6	F	37	Yes	IA	Nil
N13	21/09/2018 01:06	0.5	F	36	Yes	26	Nil
N14	21/09/2018 00:02	0.6	F	35	Yes	<20	Nil
N15	20/09/2018 22:59	0.0	F	35	Yes	<20	Nil
N17	20/09/2018 22:31	0.7	E	35	Yes	<20	Nil
N19	20/09/2018 22:05	0.7	E	35	Yes	20	Nil
N20	20/09/2018 23:28	0.9	F	35	Yes	IA	Nil
N21	21/09/2018 00:28	0.7	G	35	No	<20	NA

Notes:

1. Wind speed is sourced from the WCP weather station, stability class is determined based on WCP inversion tower data;
2. Criterion may or may not apply due to rounding of meteorological data values;
3. Noise emission limits apply for all meteorological conditions, except for the following: wind speeds greater than 3 m/s above ground level; or stability category F temperature inversions and wind speeds greater than 2 m/s at 10m above ground level; or stability category G temperature inversion conditions;
4. These are results for WCP in the absence of all other noise sources;
5. Bold results in red are those greater than the relevant criterion (if applicable); and
6. NA in exceedance column means atmospheric conditions have determined that criterion is not applicable.

Table 4.3: $L_{A1,1\text{minute}}$ GENERATED BY WCP AGAINST PROJECT SPECIFIC CRITERIA – SEPTEMBER 2018

Location	Start Date and Time	Wind Speed m/s ^{1,2}	Stability Class ^{1,2}	Criterion dB	Criterion Applies? ^{2,3}	WCP $L_{A1,1\text{min}}$ dB ^{4,5}	Exceedance ^{5,6}
N6	21/09/2018 00:48	0.6	F	45	Yes	IA	Nil
N13	21/09/2018 01:06	0.5	F	45	Yes	31	Nil
N14	21/09/2018 00:02	0.6	F	45	Yes	<20	Nil
N15	20/09/2018 22:59	0.0	F	45	Yes	<20	Nil
N17	20/09/2018 22:31	0.7	E	45	Yes	27	Nil
N19	20/09/2018 22:05	0.7	E	45	Yes	24	Nil
N20	20/09/2018 23:28	0.9	F	45	Yes	IA	Nil
N21	21/09/2018 00:28	0.7	G	45	No	<20	NA

Notes:

1. Wind speed is sourced from the WCP weather station, stability class is determined based on WCP inversion tower data;
2. Criterion may or may not apply due to rounding of meteorological data values;
3. Noise emission limits apply for all meteorological conditions, except for the following: wind speeds greater than 3 m/s above ground level; or stability category F temperature inversions and wind speeds greater than 2 m/s at 10m above ground level; or stability category G temperature inversion conditions;
4. These are results for WCP in the absence of all other noise sources;
5. Bold results in red are those greater than the relevant criterion (if applicable); and
6. NA in exceedance column means atmospheric conditions have determined that criterion is not applicable.

6 SUMMARY OF COMPLIANCE

Global Acoustics was engaged by Wilpinjong Coal Pty Ltd to conduct a noise survey around Wilpinjong Coal Project (WCP), an open cut coal mine located approximately 40 kilometres north east of Mudgee.

Environmental noise monitoring described in this report was undertaken during the night period of 20/21 September 2018. Attended noise monitoring was conducted at eight sites. The duration of all measurements was 15 minutes.

Noise levels from WCP complied with relevant noise limits at all monitoring locations during the September 2018 monitoring. Criteria may not always be applicable due to meteorological conditions at the time of monitoring.

Global Acoustics Pty Ltd

Wilpinjong Coal received report from Global Acoustics Pty Ltd on 22 October 2018.

Blasting

Monitoring is carried out near sensitive locations during blasting activities to determine the vibration in the air (overpressure) and earth (ground vibration). A summary of the results of this monitoring, and the limits specified in the EPL, are shown in Tables 3 and 4. Figure 7 shows the actual overpressure and vibration levels recorded during the month.

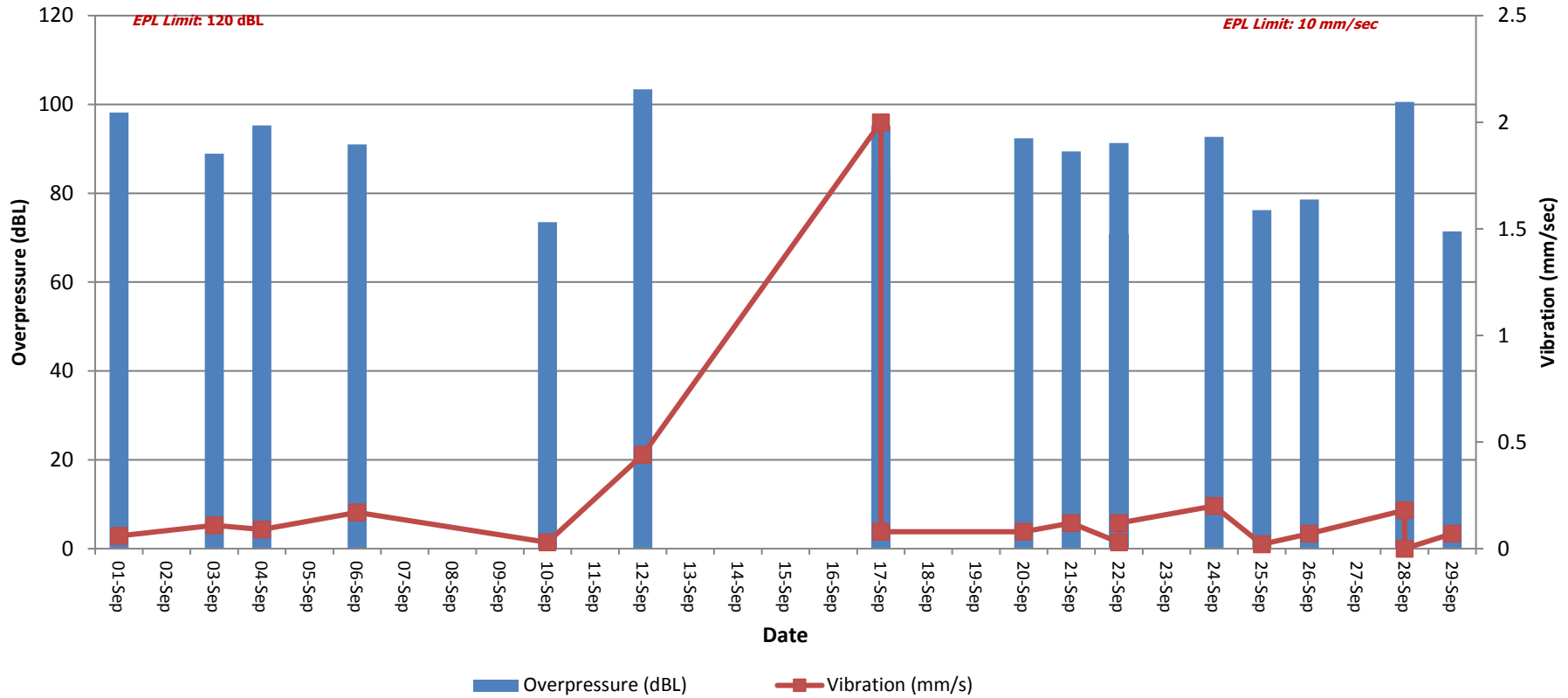
Table 3 – Overpressure Monitoring Results

Location	Month	Number of Blasts	Minimum overpressure (dB(L))	Maximum overpressure (dB(L))	Mean overpressure (dB(L))	EPL overpressure Limits (dB(L))	Exceedance (yes/no)
Approx. 50m west of the Wollar Public School	September	18	70.8	103.4	87.8	115dB (95% blasts) 120 dB (100% blasts)	no

Table 4 – Vibration Monitoring Results

Location	Month	Number of Blasts	Minimum vibration (mm/sec)	Maximum vibration (mm/sec)	Mean vibration (mm/sec)	EPL vibration Limits (mm/sec)	Exceedance (yes/no)
Approx. 50m west of the Wollar Public School	September	18	0.02	2.00	0.23	5 mm/s (95% blasts) 10 mm/s (100% blasts)	no

Figure 5. Overpressure (dBL) and Vibration (mm/sec) recorded during Month



Weather Monitoring

Continuous weather monitoring occurs onsite at the location shown on Figures 5 and 6 (**Meteorological Station**). The Meteorological Station continuously monitors for: rainfall; relative humidity; temperature (i.e. at 2m, 10m & 60m), barometric pressure, wind speed, wind direction and temperature lapse rate.

The temperature lapse rate is a measure of stable atmospheric conditions and is determined by measuring air temperature at two elevations 58m apart (i.e. 2m and 60m from ground level) and extrapolating the temperature difference over 58m to determine the lapse rate per °C/100m.

Table 5 shows the meteorological data recorded during the month.

Table 5

Date	Temperature (°C)									Humidity (%)			Prevailing Wind			Rain (mm)	Bar (hPa)	Lapse Rate (°C/100m)	
	2m			10m			60m			Speed			Dir (Deg)						
	Avg	Min	Max	Avg	Min	Max	Avg	Min	Max	Avg	Min	Max		Avg	Min	Max			
1/09/2018	12.1	8	15.6	12.2	9.1	15.3	11.9	10	14.8	73	51.2	91.4	3.6	1.2	6.2	265	0.6	1012.5	3.6
2/09/2018	10.9	3.8	18	11.1	4.4	17.4	11.1	5.4	16.6	69.6	34.9	99.4	0.5	0	3.1	73	0	1018.1	5.5
3/09/2018	11.6	8.9	15.1	11.5	9.1	15	11	9	14.3	64.1	48.7	76.7	3.6	1.2	5.8	93	0	1024.4	0.2
4/09/2018	12.1	9.5	16.2	12	9.5	15.7	11.5	9	14.8	72.7	52.4	93.4	4.3	2.9	6.3	87	2	1026.1	-0.2
5/09/2018	13.5	9.6	18.1	13.4	9.9	17.7	13	10	17	66.9	42	85.2	3.2	0.7	7.5	81	0.2	1049.3	0.7
6/09/2018	14.1	9.4	19.8	14.2	10.4	19.3	14.1	10.6	18.8	74.6	47.5	97.4	0.8	0	3.8	75	13.6	1018	3.6
7/09/2018	12.9	9.3	16.3	13.1	9.8	16.2	13.5	11.2	15.7	93.4	81.2	99	1.1	0	3.3	101	11	1014.3	5.5
8/09/2018	13.4	6.7	20.7	13.5	7.7	19.6	14	9.8	19.4	80.1	46.3	99.9	0.4	0	4.2	278	0.6	1015.6	7.9
9/09/2018	12.7	2.8	19.1	13	3.9	18.7	13.4	6.4	18.3	56.5	30.2	96.6	2.5	0	5.8	229	0	1021.1	9.5
10/09/2018	14.2	5.9	22.8	14.6	6.6	22.3	15.5	9	21.8	60.4	30.2	92.9	0.4	0	2.7	321	0	1023.9	7.1
11/09/2018	14	5.2	25.7	14.5	5.9	25.2	15.8	7.9	24.6	68.1	24.9	98	0.3	0	3.8	322	0	1020.8	10.5
12/09/2018	16.3	5.7	27	16.9	7	26.4	18.2	9.4	26.4	59.4	20.3	95.8	1.5	0	6	293	0	1016.1	10.7
13/09/2018	17	7	26.6	17.5	8.2	25.9	18.4	10.3	25.6	58.1	25.5	91.9	0.8	0	4.2	253	0	1016.9	7.6
14/09/2018	18	8.2	27	18.2	10	26.5	18.8	12.6	26	54.7	15.8	93.2	0.9	0	5.6	284	0	1016.6	12.4
15/09/2018	17.1	4.1	29	17.3	5	28.4	17.9	7.2	28.1	41.4	12.7	83.6	3.2	0	8.8	257	0	1009.5	8.3
16/09/2018	10.7	4.8	15.9	10.7	5.8	15	10.3	6.3	14.2	37.7	17.9	66.9	2.6	0	5.6	192	0	1018.5	5.0
17/09/2018	9.6	-0.1	18.7	10	1.1	18.1	10.6	2.1	17.2	56.7	25.3	87.7	0.9	0	4.2	66	0	1022.5	9.3
18/09/2018	13.4	1.7	24.4	13.8	2.5	23.6	14.7	4	23.2	58.1	25.8	93.4	1.7	0	5.9	296	0	1017.1	9.1
19/09/2018	14.9	4.8	22.8	15.2	5.9	22.1	15.9	9	21.4	49.7	22.2	89.9	2.2	0	6.5	249	0	1011.8	8.8
20/09/2018	11.2	1	18.2	11.3	2	17.6	12.1	4.9	16.6	43.7	18.8	78.7	1.1	0	4.8	180	0	1019	12.2
21/09/2018	11.5	1.1	21.4	11.9	1.9	20.9	12.5	3.3	20.2	54	20.2	94.2	0.7	0	2.8	284	0	1026	8.4
22/09/2018	12.9	2	22.4	13.3	2.7	21.7	14.4	4.8	21.1	49.3	23.2	80.1	0.9	0	5	264	0	1025.9	9.8
23/09/2018	15.7	3.7	24.6	15.9	4.5	24.3	16.3	6.6	23.3	50.3	20.6	84.9	0.9	0	5.3	171	0	1023.5	11.0
24/09/2018	13.6	10.6	16.6	13.5	10.6	15.9	12.9	10.1	15	64.1	50.5	82.7	4.7	2.2	6.6	80	0	1026.2	0.0
25/09/2018	13.9	10.3	20.3	13.7	10.4	19.8	13.2	9.9	18.6	61	33.3	83.7	2.8	0.5	4.8	82	0	1024.3	1.6
26/09/2018	10.2	5	14	10.4	6	13.4	10.4	7.2	12.6	86.6	71.5	96.4	1.6	0	4.4	80	11.4	1021.8	4.5
27/09/2018	12.9	6.9	21.7	13	7.8	21.3	13	7.9	20.4	69.4	21.8	98.3	0.6	0	3	93	0.2	1019.8	6.7
28/09/2018	17	4	28.2	17.4	4.6	27.7	18.2	6.1	27.1	53.3	18.7	97.2	1.5	0	6.8	289	0	1015.3	10.2
29/09/2018	15.5	6.1	20	15.5	7.3	20.3	15.2	10	20.3	35.2	17.5	58.9	2.7	0	6.5	223	0	1020.3	6.7
30/09/2018	13.2	5.4	19.2	13.2	7.4	18.8	12.9	8.8	18	54	27.9	80.1	2.8	0.3	5.3	76	0	1027.4	7.2

Figure 6 – Air (Dust) Monitoring Locations

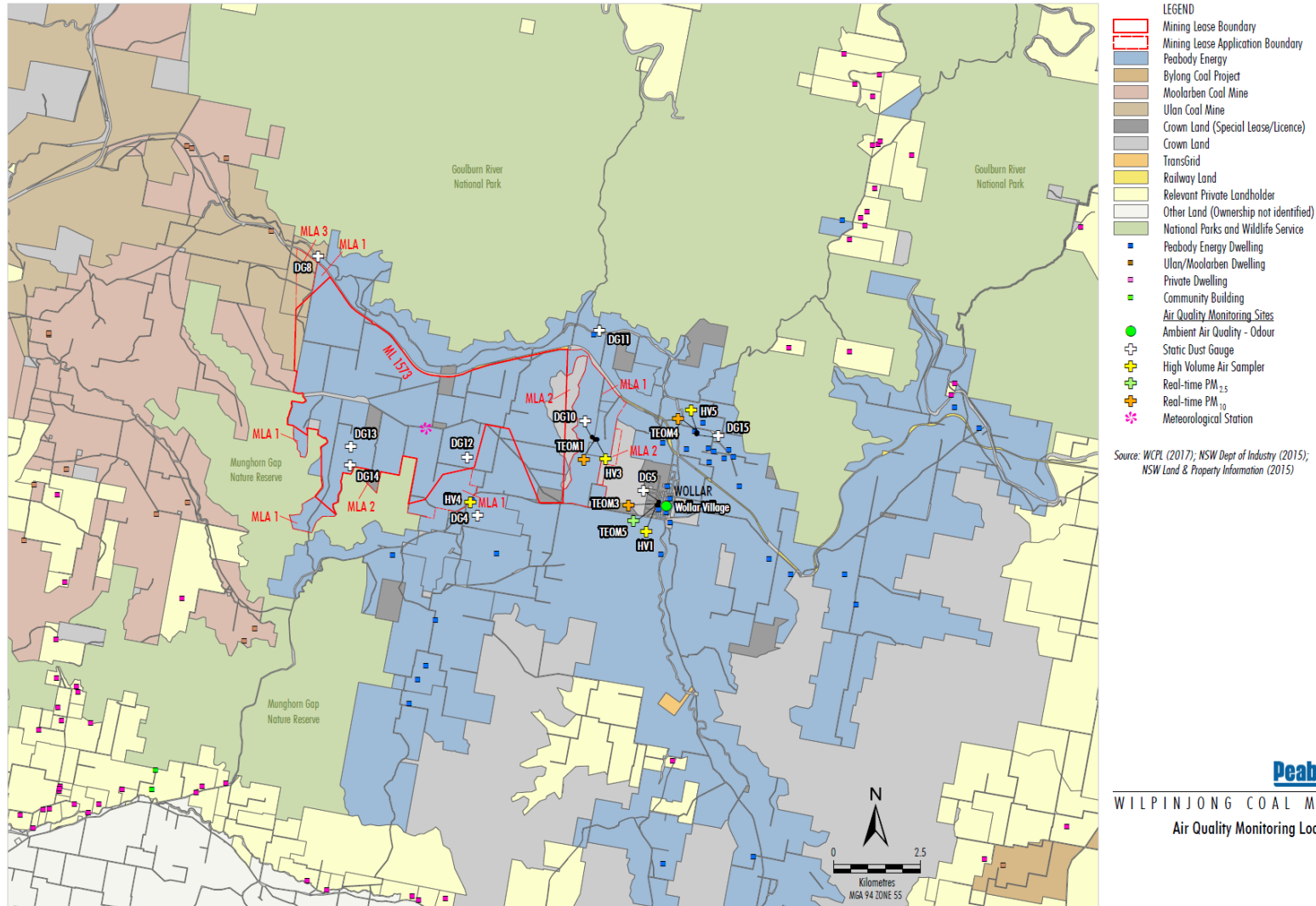


Figure 7 – Attended Noise Monitoring Locations

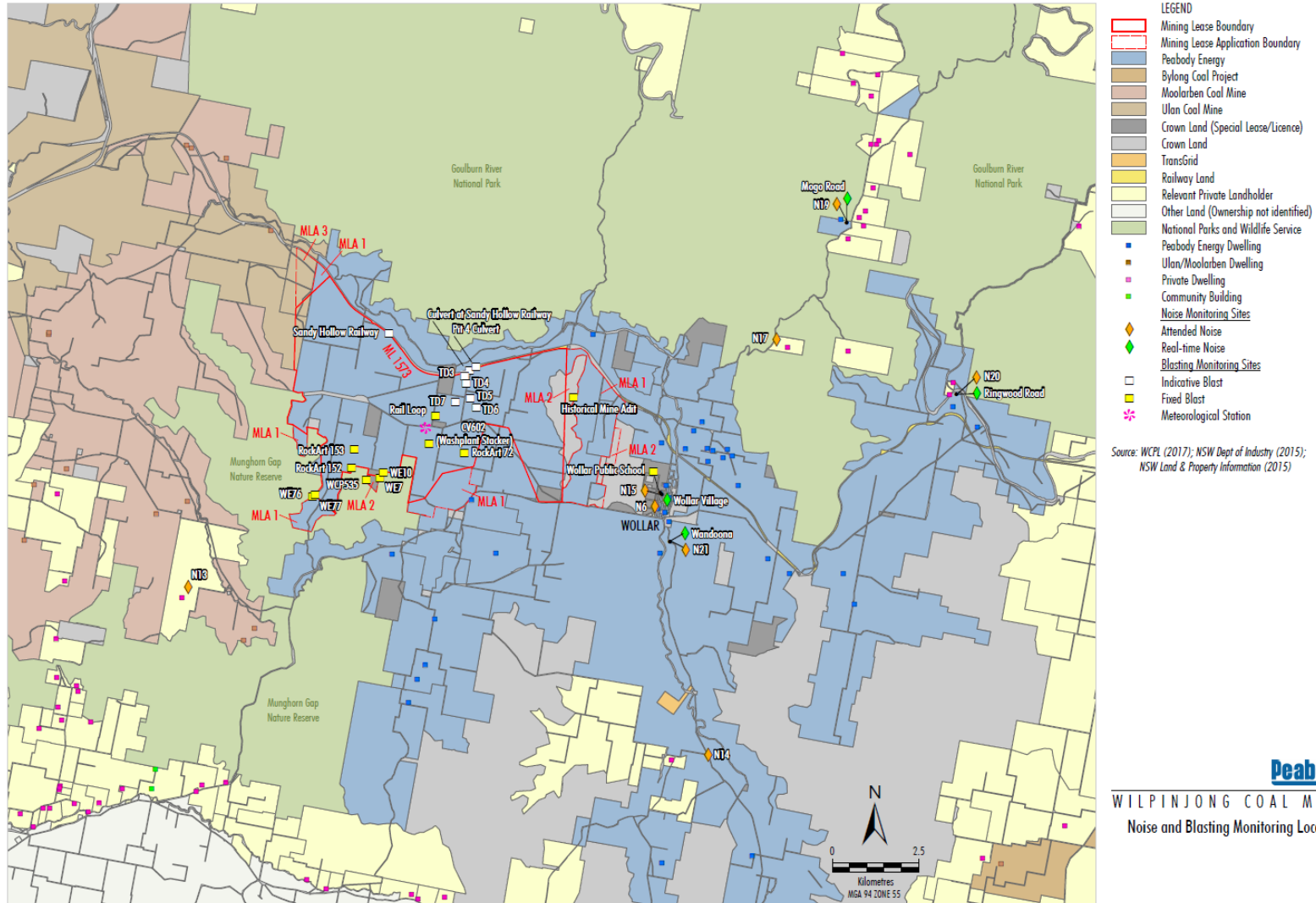


Figure 7 – Wollar Village Environmental Monitoring Sites



LEGEND		Noise Monitoring Sites	
 Peabody Energy	◆ Attended Noise	◆ Real-time Noise	 Blasting Monitoring Sites
 Crown Land (Special Lease/Licence)	◆ Fixed Blast	 Air Quality Monitoring Sites	+ Ambient Air Quality - Odour
 Crown Land	 Railway Land	+ Static Dust Gauge	+ High Volume Air Sampler
 Relevant Private Landholder	1 Landholder Reference Number	+ Real-time PM _{2.5}	+ Real-time PM ₁₀
1 Peabody Energy Dwelling	■ Peabody Energy Dwelling		
■ Community Building	■ Private Dwelling		
■ Private Dwelling	# Special Lease/Licence Holder		

Source: WCPL (2017); NSW Dept of Industry (2015); NSW Land & Property Information (2016)

Peabody
WILPINJONG COAL MINE
Wollar Environmental Monitoring Sites