



WILPINJONG COAL PTY LTD

Environment Protection Licence (EPL) 12425

[Link to Environment Protection Licence EPL12425](#)

**LICENCE MONITORING DATA
MONTHLY SUMMARY REPORT**

for

1 October 2023 to 31 October 2023

Air Monitoring

Air quality surrounding the Wilpinjong Coal Mine is monitored using:

1. tapered element oscillating microbalances (TEOM);
2. high volume air samplers (HV); and
3. dust deposition gauges (DG).

In terms of the above equipment:

1. the TEOM and HVAS measure fine dust particles up to 10 microns in diameter (i.e. PM10); and
2. the DG measure the total dust deposited in the gauge during the sample period.

All are influenced by mining as well as non-mining activities in the local area.

The location of the above monitoring equipment in relation to Wilpinjong Coal Mine is shown in **Figures 6** and **8**.

A summary of the monitoring results for the month is provided in **Table 1** and the yearly trends are also shown in **Figures 1** to **3**.

For comparison with **Figures 2** and **3**, **Figure 4** displays the Regional 24Hr PM10 Average. PM10 dust levels for the month have been recorded in Bathurst and Merriwa by NSW EPA.

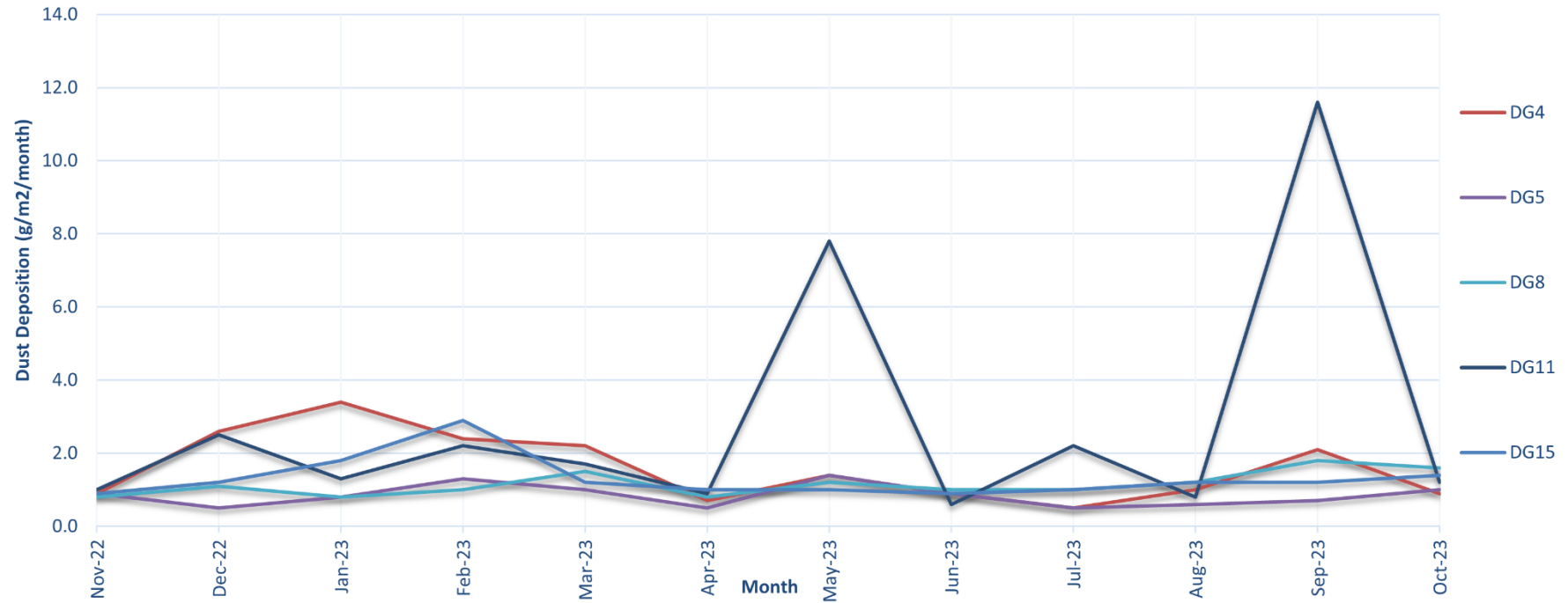
Table 1 - Air Monitoring

EPL ID No.	Monitoring Point ID.	Pollutant	Unit of Measure	Monitoring Frequency required by EPL	No. of times measured during month	Min. Value	Max. Value	Mean Value	Measurement	Annual Average	Limit	Exceed* (yes/no)	Date Last Sampled	Date Reported
3	DG4	Particulates - TIM	grams per square metre per month	Monthly	1				1.0				24/10/23	21/12/23
4	DG5	Particulates - TIM	grams per square metre per month	Monthly	1				0.6	0.8	4.0	No	24/10/23	21/12/23
6	DG8	Particulates - TIM	grams per square metre per month	Monthly	1				1.2				24/10/23	21/12/23
9	DG11	Particulates - TIM	grams per square metre per month	Monthly	1				0.8				24/10/23	21/12/23
17	DG15	Particulates - TIM	grams per square metre per month	Monthly	1				1.2				24/10/23	21/12/23
13	HV1	PM10	micrograms per cubic metre	Every 6 days	5	5.2	24.1	11.1			50	No	26/10/23	21/12/23
19	HV4	PM10	micrograms per cubic metre	Every 6 days	5	6.2	28.9	13.3			50		26/10/23	21/12/23
20	HV5	PM10	micrograms per cubic metre	Every 6 days	5	7.8	27.1	13.8			50		26/10/23	21/12/23
22	TEQM3	PM10	micrograms per cubic metre	Continuous (24 Hr Average)	100.0%	3.8	22.9	11.9			50	No		
23	TEQM4	PM10	micrograms per cubic metre	Continuous (24 Hr Average)	93.5%	6.3	28.8	14.6			50			

Notes:

- Limits specified in the above table are from Development Consent SSD-6764.

Figure 1a. DG Results - 12 Month Trend



1. Limit of 4 g/m²/month (annual average) applies to DG5 (Wollar Village) - refer Figure 1b.
2. During the sampling period ending 22 May 2023, hazard reduction burns were undertaken within nearby national parks. This aligns with the elevated result of 7.8g/m² of total insoluble matter for the sampling period.
3. During the sampling period ending 26th of September 2023, DG_11 results showed 30% ash, 5% fine dark particles and 65% organic matter. A range of small fires present in the area throughout the month. Insects, bird droppings, grazing activity in the area. Special note: Ball of hair recorded in sample and a wasp nest on the bottle.

Figure 1b. DG 5 Results - Annual Average

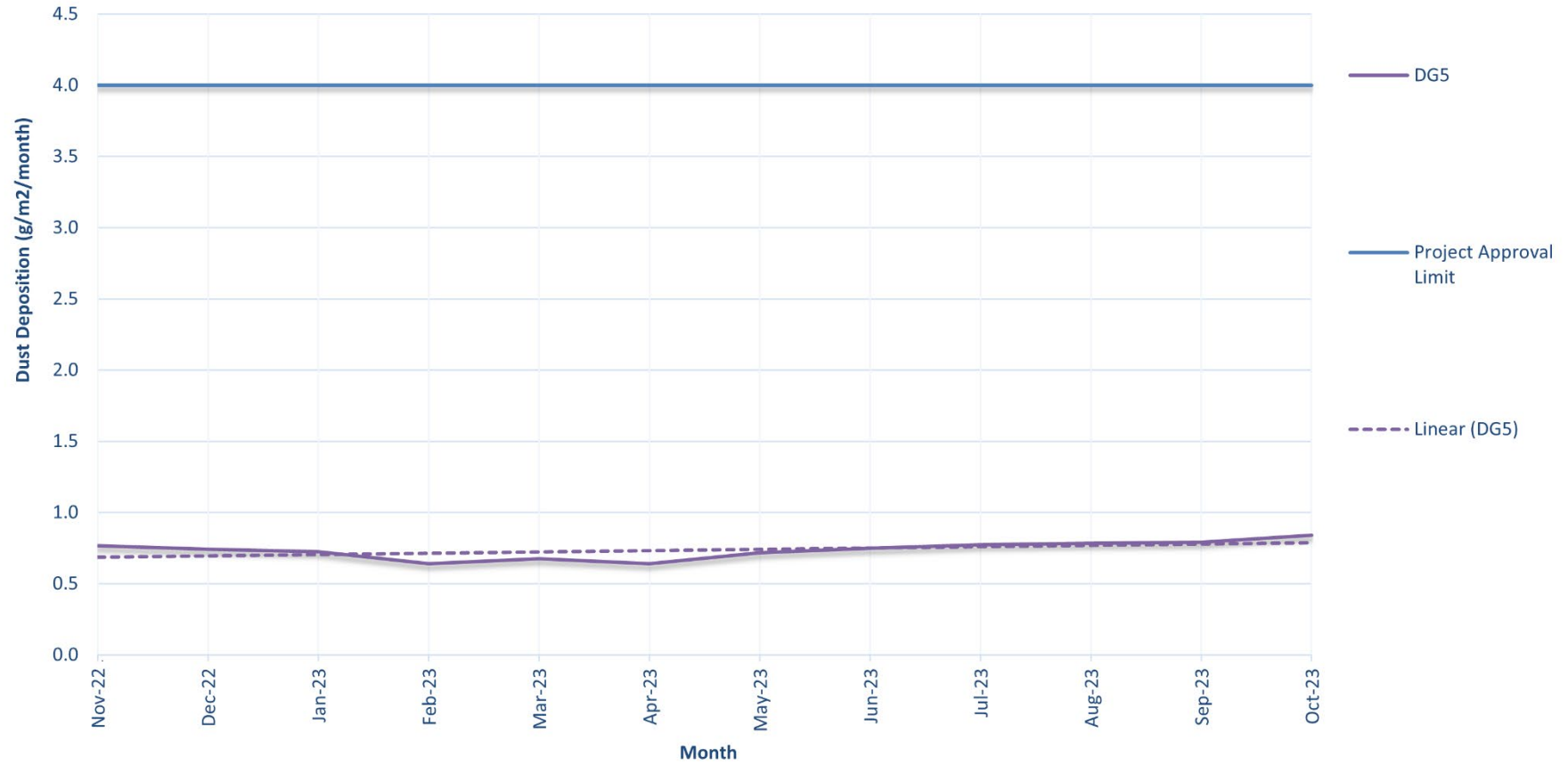
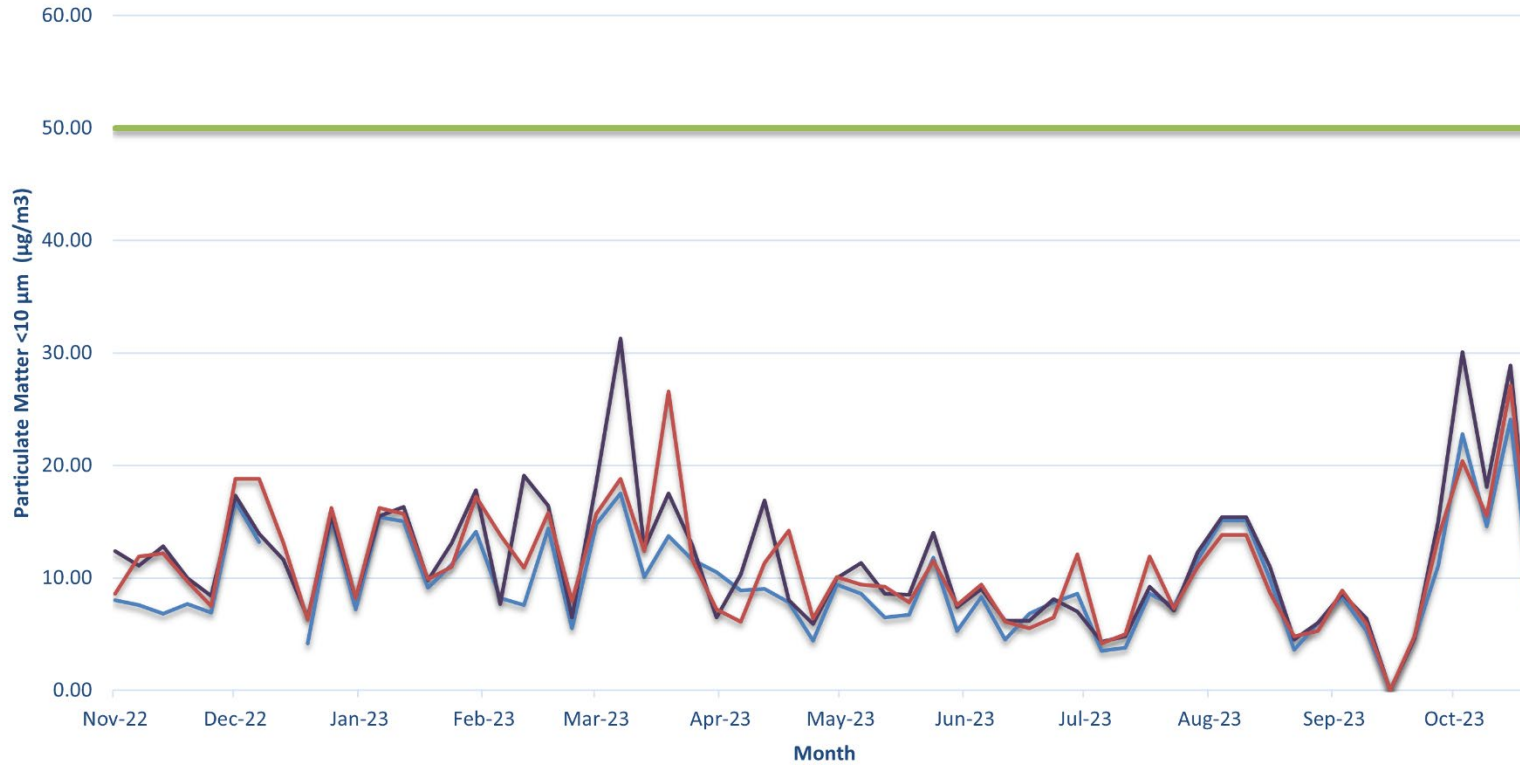


Figure 2. HV (PM10) Results - 12 Month Trend

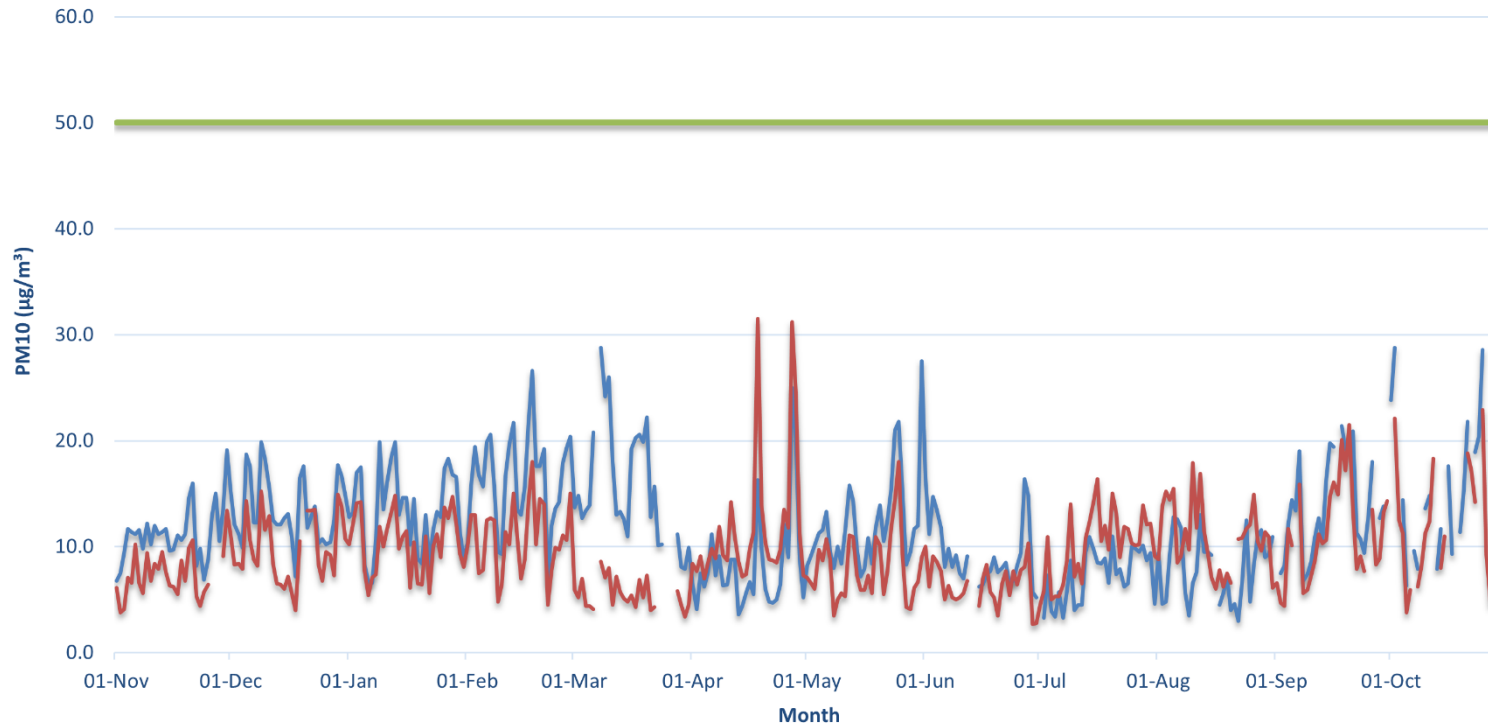


Notes:

1. Limit doesn't apply for extraordinary events such as bushfires, prescribed burning, or dust storms.
2. A power outage prevented a sample from being collected at HV1 on 12 December 2022.

— HV1 (Wollar) — HV4 (Robinsons) — HV5 (Araluen Road) — 24 hour PM10 limit (refer notes)

Figure 3. TEOM (PM10) Results - 12 Month Trend

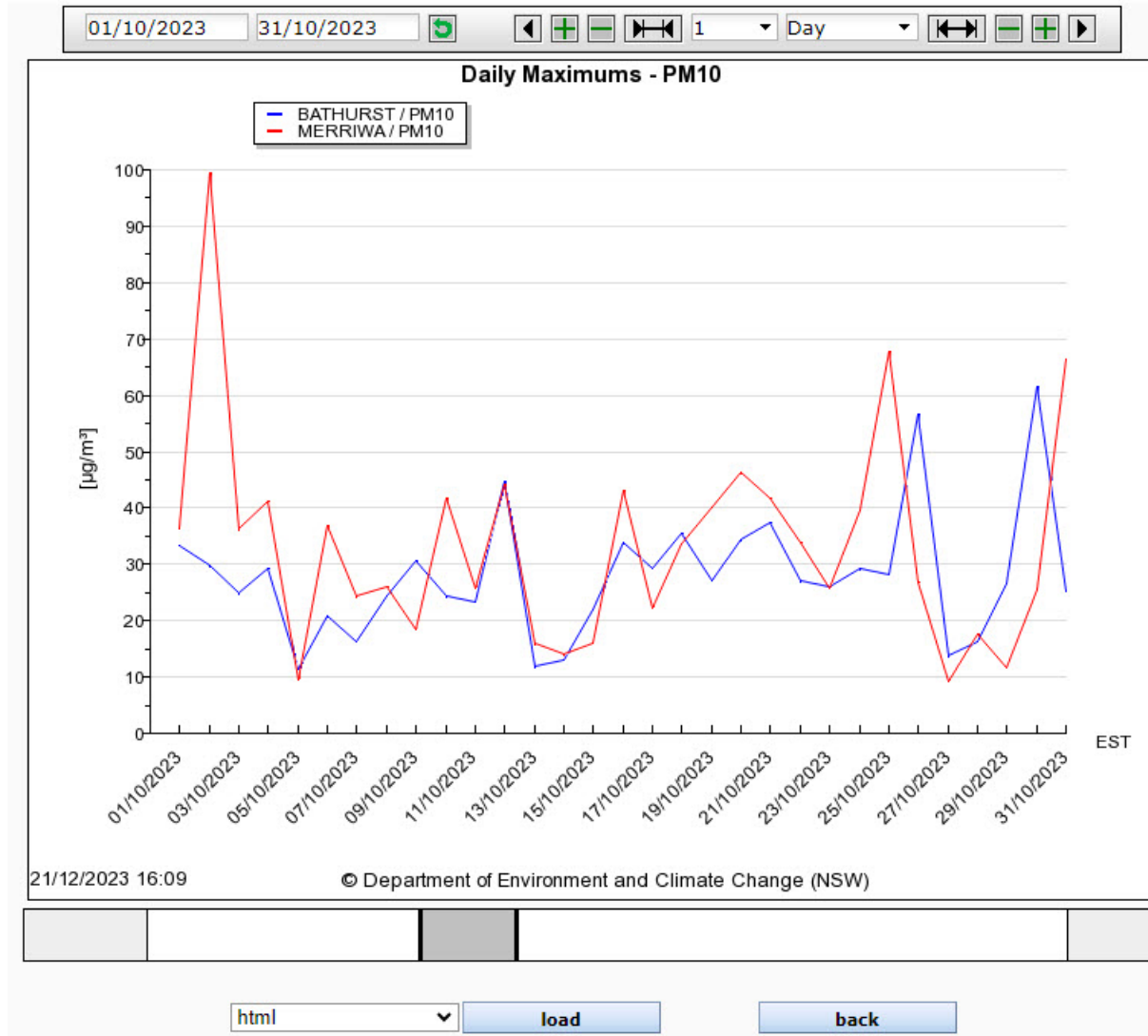


Notes:

1. Limit doesn't apply for extraordinary events such as bushfires, prescribed burning or dust storms
2. Power outages and maintenance during June and October 2022, and March 2023 resulted in periods of no data at TEOM 3 and 4.
3. Instrumentation error at TEOM 3 prevented accurate data recording on 30 July and 6, 10-11 October 2022.
4. Planned maintenance prevented valid 24 hour average values from being recorded between 22 June 2022 at TEOM 3.
5. Unplanned power outages between 5-6 July, and on 20 October 2022 prevented valid 24 hour average values from being recorded at TEOM 3.
6. TEOM 3 failed in March 2023 for a period of five days due to low flows, extreme filter loads and a cricket discovered inside the unit during repair.
7. TEOM 4 4 failed in March 2023 for a period of two days - cause of failure unknown. The unit was restarted by Novecom.

— TEOM 4 (Araluen Rd) — TEOM 3 (Wollar) — 24 hour PM10 Limit (refer Notes)

Figure 4. Daily PM10 Average Regional Results



Surface Water Monitoring

Surface water runoff is isolated and diverted around disturbed areas through the construction of water diversion bunds. Runoff from disturbed areas is diverted into on-site water retention dams.

A Reverse Osmosis (RO) Plant treats all water from the retention dams before it is discharged to Wilpinjong Creek. The EPL specifies limits for the quantity and quality of water that may be discharged from the site.

Table 2 - Site Water Discharge Monitoring

EPL ID No.	Monitoring Point ID.	Pollutant	Unit of Measure	Monitoring Frequency required by EPL	No. of times measured during month	Min. Value	Max. Value	Mean Value	Limit	Exceed ⁿ (yes/no)	Date Last Sampled	Date Reported
24	RO Plant Discharge	Conductivity	microSiemens per centimetre (uS/cm)	Continuous during discharge	100%	104	455	373	500	No		
		Oil and Grease	milligrams per litre (mg/L)	Weekly during any discharge	0	<5	<5	<5	10.0	No	31-Oct-2023	21-Dec-2023
		pH	pH Unit	Continuous during discharge	100%	6.5	8.4	7.3	≥6.5≤8.5	No		
		Total Suspended Solids	milligrams per litre (mg/L)	Weekly during any discharge	0	<1	<1	<1	50	No	31-Oct-2023	21-Dec-2023
		Volume discharged	megalitres per day	Continuous during discharge	100%	2.773	5.252	4.572	6.5	No		
30	Clean Water Dam Discharge	Turbidity	Nephelometric Turbidity Units	Continuous during discharge	100%	<i>No discharge recorded during he month</i>			As per EPL 12425	No		

Noise Monitoring

Environmental noise monitoring (“monitoring”) is carried out monthly.

The purpose of the monitoring is to assess whether mining operations are consistent with the objectives of the EPL and the development consent conditions.

In terms of this monitoring, it is undertaken:

1. by an independent noise consultant.
2. during the night-time; and
3. at the sites shown in **Figure 7**.

On pages 11 and 12 of this report are the noise levels and findings from the consultant’s report.

Table 4.1 Total measured noise levels, dB – October 2023 ¹

Location	Start date and time	L _{Amax}	L _{A1}	L _{A10}	L _{Aeq}	L _{A50}	L _{A90}	L _{Amin}
N6	24/10/2023 22:50	45	38	33	30	28	26	24
N14	24/10/2023 23:45	35	29	25	23	22	20	17
N15	24/10/2023 23:15	37	36	33	30	28	25	22
N17	24/10/2023 22:23	38	36	34	31	31	27	24
N19	24/10/2023 22:00	41	39	34	30	29	19	16
N20	25/10/2023 00:15	43	34	31	26	20	18	16

Notes: 1. Levels in this table are not necessarily the result of activity at site.

Atmospheric condition data measured by the operator during each measurement using a hand-held weather meter is shown in Table 4.2. The wind speed, direction, and temperature were measured at approximately 1.5 metres above ground. Attended noise monitoring is not done during rain, hail, or wind speeds above 5 m/s at microphone height.

Table 4.2 Measured atmospheric conditions – October 2023

Location	Start date and time	Temperature °C	Wind speed m/s	Wind direction °Magnetic north ¹	Cloud cover 1/8s
N6	24/10/2023 22:50	17	< 0.5	-	0
N14	24/10/2023 23:45	16	< 0.5	-	0
N15	24/10/2023 23:15	13	< 0.5	-	0
N17	24/10/2023 22:23	21	< 0.5	-	0
N19	24/10/2023 22:00	22	< 0.5	-	0
N20	25/10/2023 00:15	12	1.0	280	0

Notes: 1. "-" indicates calm conditions at monitoring location.

Table 4.3 Site noise levels and limits – October 2023

Location	Start date and time	Wind		Stability class	Limits apply? ¹	Site limits, dB		Site levels, dB		Exceedances, dB	
		Speed m/s	Direction ⁴			L _{Aeq,15minute}	L _{A1,1minute}	L _{Aeq,15minute} ²	L _{A1,1minute}	L _{Aeq,15minute}	L _{A1,1minute}
N6	24/10/2023 22:50	0.0	-	F	Yes	37	45	28	30	Nil	Nil
N14	24/10/2023 23:45	0.0	-	F	Yes	35	45	IA	IA	Nil	Nil
N15	24/10/2023 23:15	0.0	-	F	Yes	37	45	30	36	Nil	Nil
N17	24/10/2023 22:23	0.4	359	F	Yes	38	45	31	38	Nil	Nil
N19	24/10/2023 22:00	0.3	279	F	Yes	35	45	<20	<20	Nil	Nil
N20	25/10/2023 00:15	0.0	-	F	Yes	35	45	IA	IA	Nil	Nil

Notes: 1. Noise emission limits do not apply during periods of rainfall or winds greater than 3 metres per second (at a height of 10 metres).
 2. Site-only L_{Aeq,15minute}. Includes modifying factor penalties if applicable.
 3. N/A in exceedance column means criterion was not applicable due to atmospheric conditions outside those specified in consent.
 4. Degrees magnetic north, "-" indicates calm conditions.

6 Summary

EMM was engaged by Wilpinjong Coal Pty Ltd to conduct a monthly noise survey of operations at WCP. The survey purpose was to quantify the acoustic environment and compare site noise levels against specified limits from the relevant EPL and consent.

Attended environmental noise monitoring described in this report was done during the night period of 24 October 2023 at six monitoring locations.

Noise levels from site complied with relevant limits at all monitoring locations during the October 2023 survey.

Noise limits were not applicable due to meteorological conditions at the time of monitoring.

Wilpinjong Coal received the report from EMM Consulting Pty Ltd on 30th October 2023.

Blasting

Monitoring is carried out near sensitive locations during blasting activities to determine the vibration in the air (overpressure) and earth (ground vibration). A summary of the results of this monitoring, and the limits specified in the EPL, are shown in **Tables 3** and **4**. **Figures 7 & 8** shows the actual overpressure and vibration levels recorded during the month.

Table 3 – Overpressure Monitoring Results

Location	Month	Number of Blasts	Minimum overpressure (dB(L))	Maximum overpressure (dB(L))	Mean overpressure (dB(L))	EPL overpressure Limits (dB(L))	Exceedance (yes/no)
Approx. 50m west of the Wollar Public School	October	11	82.60	113.30	97.14	115dB (95% blasts) 120dB (100% blasts)	no

Table 4 – Vibration Monitoring Results

Location	Month	Number of Blasts	Minimum vibration (mm/sec)	Maximum vibration (mm/sec)	Mean vibration (mm/sec)	EPL vibration Limits (mm/sec)	Exceedance (yes/no)
Approx. 50m west of the Wollar Public School	October	11	0.01	1.47	0.30	5 mm/s (95% blasts) 10 mm/s (100% blasts)	no

Figure 7. Overpressure (dBL) recorded during Month

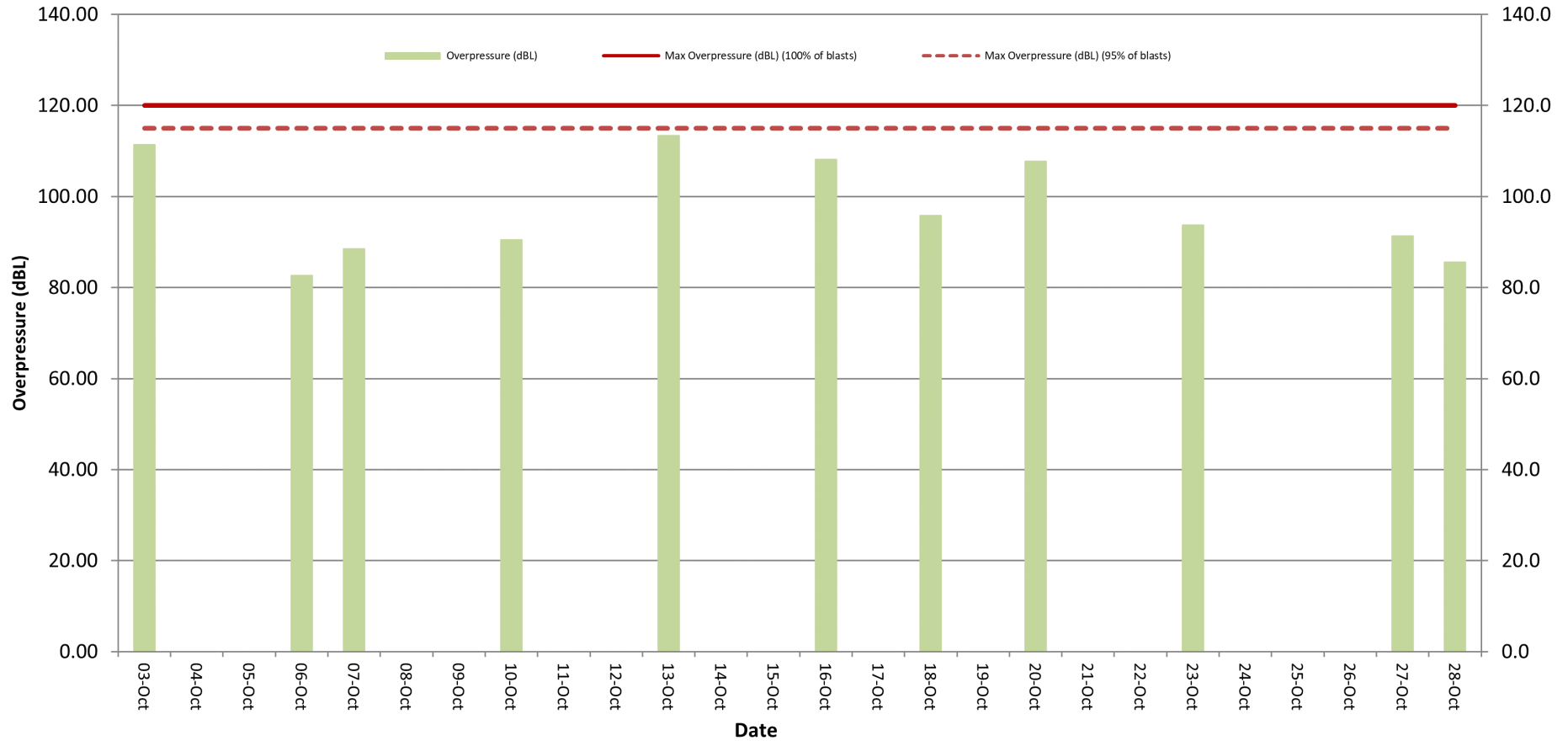
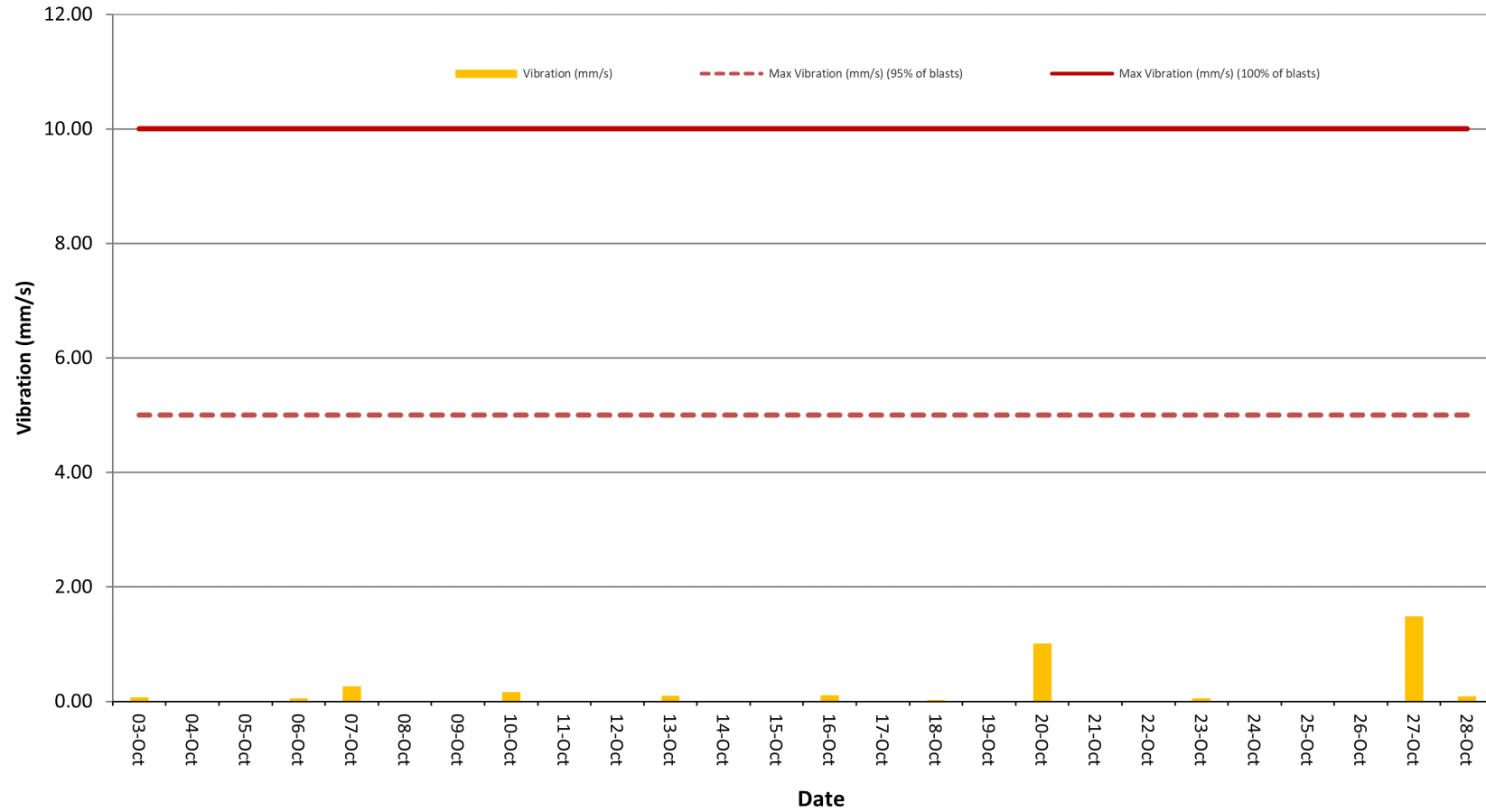


Figure 8. Vibration (mm/s) recorded during Month



Weather Monitoring

Continuous weather monitoring occurs onsite at the location shown on Figures 5 and 6 (**Meteorological Station**). The Meteorological Station continuously monitors for: rainfall; relative humidity; temperature (i.e. at 2m, 10m & 60m), barometric pressure, wind speed, wind direction and temperature lapse rate.

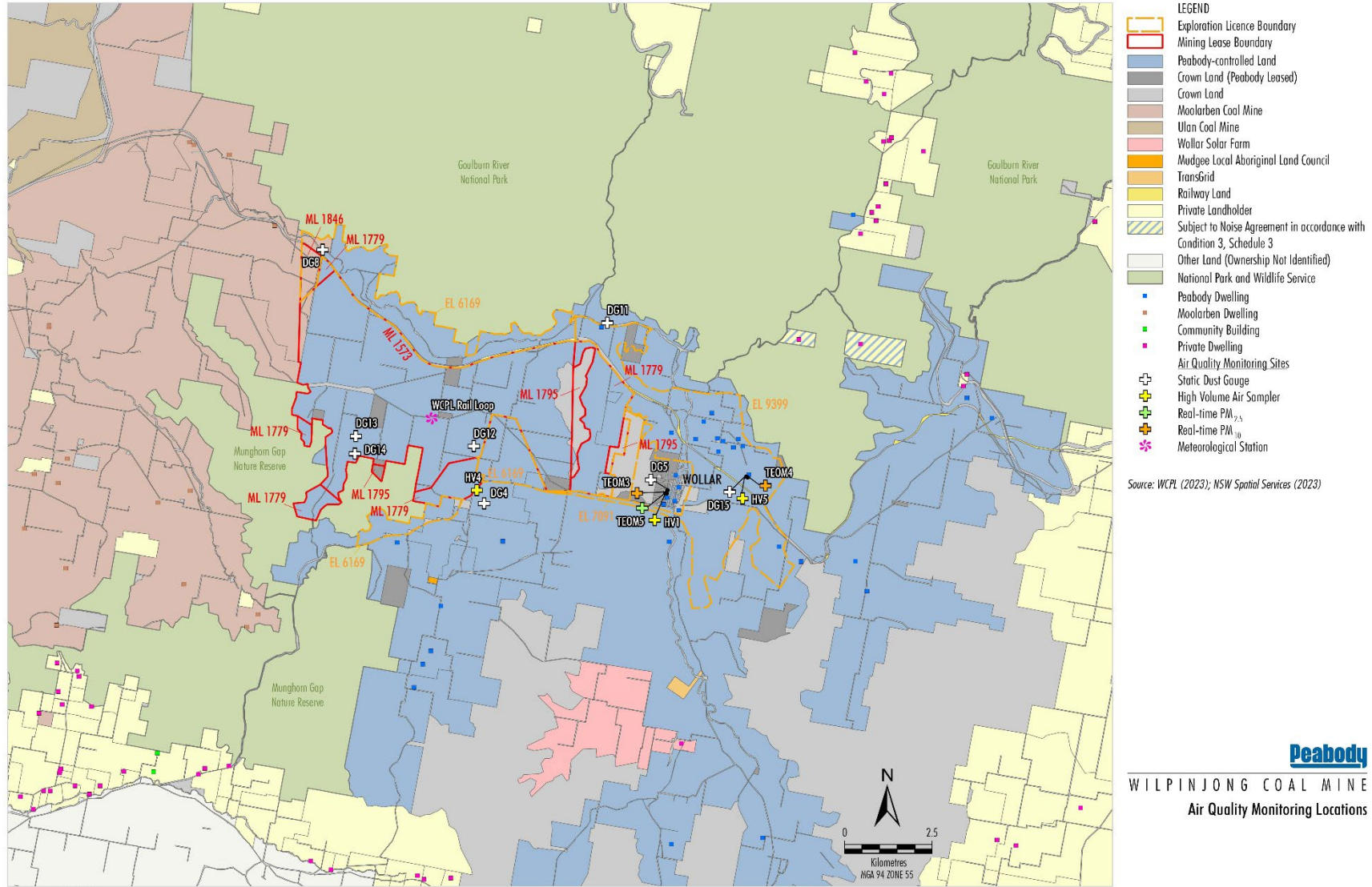
The temperature lapse rate is a measure of stable atmospheric conditions and is determined by measuring air temperature at two elevations 58m apart (i.e. 2m and 60m from ground level) and extrapolating the temperature difference over 58m to determine the lapse rate per °C/100m.

Table 5 shows the meteorological data recorded during the month.

Table 5 – Monthly Meteorological Data

Date	Temperature (°C)									Humidity (%)			Prevailing Wind			Rain (mm)	Bar (hPa)	Lapse Rate (°C/100m)	
	2m			10m			60m			Speed			Dir (Deg)						
	Avg	Min	Max	Avg	Min	Max	Avg	Min	Max	Avg	Min	Max		Avg	Min	Max			
1/10/2023	23.5	11	32.9	24.2	12.3	32.3	24.9	15.4	31.1	38.8	11.3	76.6	3.2	0	7.9	260	0	1011.7	151.7
2/10/2023	24.7	17.9	33.4	25.3	19.3	32.9	25.3	18.2	31.5	39.9	16.1	62.7	0.5	0	4	34	0.4	1015.7	92.7
3/10/2023	22.9	12.3	32.8	23.6	13.5	31.4	24	15.3	29.8	45	11.7	91.9	1.5	0	6.7	299	0	1014.6	185.5
4/10/2023	17.1	9.2	23	17.7	9.8	23.6	17.8	9.8	23.5	64	32	93.1	1.8	0	7.3	278	25	1010.2	113.5
5/10/2023	12.3	8.5	16.8	12.3	9.1	15.8	11.6	8.5	14.9	58.7	34	83.2	4.2	0.9	7.1	237	0	1017.2	-119.6
6/10/2023	14.1	4.7	22.3	14	5.2	21.4	13.9	6.1	20.1	55.7	30.7	83.8	0.5	0	4.4	88	0	1021.9	-88.9
7/10/2023	15	11.9	19.2	14.8	12.1	18.8	14.1	11.5	17.7	56.3	37.5	72.7	3.4	1.9	4.9	57	0	1026.5	-165.0
8/10/2023	15.4	9.6	22.5	15.3	10	21.7	14.8	10.3	20.5	53.5	25.5	80.7	2.2	0	5.4	68	0	1026.7	-98.0
9/10/2023	15.9	5.5	25.3	16.1	6.3	24.4	16.5	7.2	23.3	56.9	22.9	92.9	0.8	0	3.5	229	0	1022	99.6
10/10/2023	16.9	6.4	25.7	17.4	7.4	25.1	17.7	9.4	24.2	51.2	21.9	84.6	0.2	0	3.5	200	0	1018.7	133.8
11/10/2023	19.3	11.3	27.6	19.4	12.7	26.9	19.4	14.8	25.8	51.9	17.5	79.9	0.4	0	3.2	117	0	1019.8	9.8
12/10/2023	19.3	6.2	30.8	19.4	7.3	30.1	19.5	9	29.3	43.6	16.1	78.3	3.1	0	8.4	248	0	1014	32.7
13/10/2023	15.3	6.8	22.2	15.2	8.1	21.4	14.5	8.6	20.1	46.3	21.8	80.8	3	0	5.6	208	0	1016.4	-134.6
14/10/2023	17.2	6.8	24.6	17.3	8	24.2	17.1	9.6	23.1	49.6	27.3	83	2.3	0	5.5	212	0	1015.9	-11.7
15/10/2023	18.4	8.2	26.7	18.7	9.5	26.1	19.1	11.8	24.9	44.8	19.3	81.6	1.8	0	5.7	226	0	1014	118.4
16/10/2023	16.2	8.1	23.1	16.5	9.8	22.2	16.7	12.2	21	46.7	25.9	78.1	3.3	0	9	209	0	1012.7	72.4
17/10/2023	14.8	7.2	20.6	14.5	8	19.3	13.9	8.6	18.3	46.2	32.5	72.2	3.4	0	5.8	98	0	1022.3	-140.0
18/10/2023	16.3	11.7	22.1	16.1	11.8	21.6	15.3	11.3	20.6	56.6	34.8	76.8	3.7	2.3	5	53	0	1024.7	-169.6
19/10/2023	18.1	9.7	26.1	18	11.3	25.8	17.4	11.6	24.4	53.2	26.6	87.2	1.8	0	4.4	59	0	1019.7	-121.1
20/10/2023	19.6	7.5	30.5	19.9	8.4	29.7	20.2	10	28.4	50.7	17.4	91	0.6	0	4.6	199	0	1014.4	109.2
21/10/2023	22.1	9.6	34	22.7	10.7	33.1	23.6	12.5	31.5	44.4	14.6	81	0.8	0	4.2	256	0	1010.5	247.5
22/10/2023	21.2	15.3	26.9	21.6	17.3	25.9	21.8	17.1	25.3	34.6	12.6	66.2	3	0	6.6	227	0	1008.6	85.3
23/10/2023	17.7	6.9	26.4	17.9	7.8	25.6	18.1	10	24.5	37.7	14.5	68.2	1.6	0	4.4	222	0	1011.1	63.1
24/10/2023	20.6	6.2	33	21	7.3	32.4	21.5	9.1	31	33.1	8	71.5	1.2	0	4.5	246	0	1010.4	148.6
25/10/2023	19.6	10.6	27.3	19.7	12	26.3	20.1	14.9	25	30.4	14.6	55.6	2.5	0	6.7	206	0	1009.6	98.5
26/10/2023	12.6	9.3	16	12.6	9.3	15.2	12	8.6	14.8	50.8	26.6	89.8	2.6	0.5	5.1	119	8.6	1018	-98.7
27/10/2023	13.6	7.5	19.4	13.5	8.4	18.7	13	8.5	17.7	64.5	36.9	90.2	3.2	0	6	74	2.2	1025.2	-103.1
28/10/2023	14.4	6.8	21.1	14.4	8.4	20.4	14	9.3	19.1	58.2	31.6	88	2	0	4.5	55	0	1024.5	-62.6
29/10/2023	16.6	5.9	26.2	16.9	6.6	25.3	17.2	7.4	24.2	52.7	18.3	92.8	0.4	0	2.9	242	0	1017.2	91.8
30/10/2023	20.9	6.4	32.1	21.2	7.5	31.1	21.4	9.1	29.7	41.1	14.8	86.4	1.8	0	6.7	251	0	1010	81.8
31/10/2023	21.6	14.7	26.8	21.8	15.5	25.7	21.5	15.5	24.4	26.9	7.3	70	2.4	0	6.8	200	0	1010.1	-25.6

Figure 6 – Air (Dust) Monitoring Locations



WIL-12-11_EMS 2023_202A

Figure 7 – Attended Noise Monitoring Locations

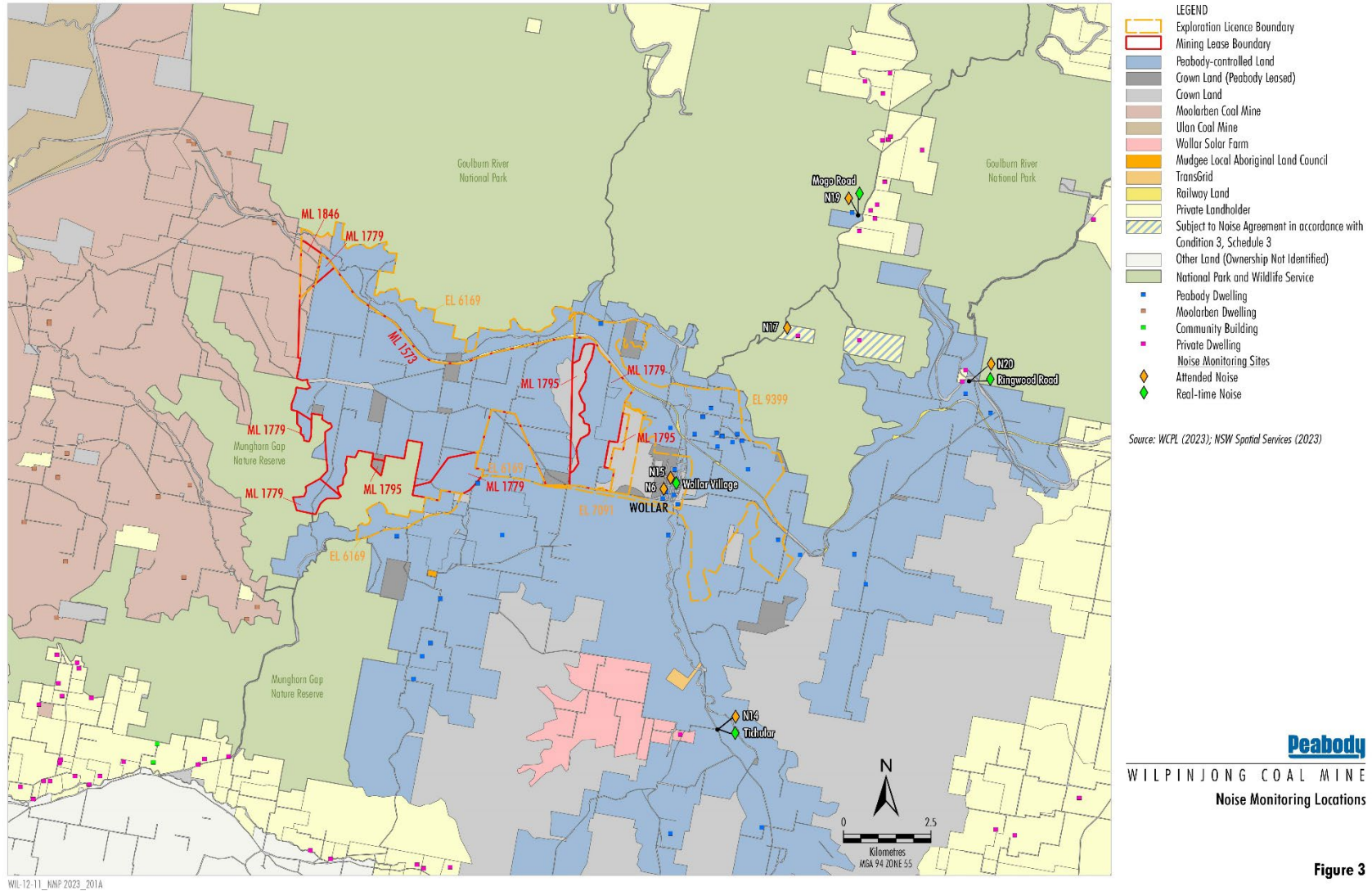


Figure 3

Figure 8 – Wollar Village Environmental Monitoring Sites



WML12-11_EHS 2023 201A

Source: WCPL (2023); NSW Spatial Services (2023)

- | | | |
|---|------------------------------|--|
| LEGEND | | |
| Peabody-controlled Land | Noise Monitoring Sites | |
| Crown Land (Peabody Leased) * | Attended Noise | |
| Crown Land | Real-time Noise | |
| Railway Land | Blasting Monitoring Sites | |
| Subject to Noise Agreement in accordance with Condition 3, Schedule 3 | Fixed Blast | |
| Landholder Reference Number | Air Quality Monitoring Sites | |
| Peabody Dwelling | Static Dust Gauge | |
| Community Building | High Volume Air Sampler | |
| Private Dwelling | Real-time PM _{2.5} | |
| | Real-time PM ₁₀ | |

* Special Lease/Licence Holder