



**WILPINJONG COAL PTY LTD**

**Environment Protection Licence (EPL) 12425**

[Link to Environment Protection Licence EPL12425](#)

**LICENCE MONITORING DATA  
MONTHLY SUMMARY REPORT**

for

**1 December 2019 to 31 December 2019**

## Air Monitoring

Air quality surrounding the Wilpinjong Coal Mine is monitored using:

1. tapered element oscillating microbalances (TEOM);
2. high volume air samplers (HV); and
3. dust deposition gauges (DG).

In terms of the above equipment:

1. the TEOM and HVAS measure fine dust particles up to 10 microns in diameter (i.e. PM10); and
2. the DG measure the total dust deposited in the gauge during the sample period.

All are influenced by mining as well as non-mining activities in the local area.

The location of the above monitoring equipment in relation to Wilpinjong Coal Mine is shown in **Figures 6** and **8**.

A summary of the monitoring results for the month is provided in **Table 1** and the yearly trends are also shown in **Figures 1** to **3**.

For comparison with **Figures 2** and **3**, **Figure 4** displays the Regional 24Hr PM10 Average. PM10 dust levels for the month have been recorded in Bathurst and Merriwa by NSW EPA.

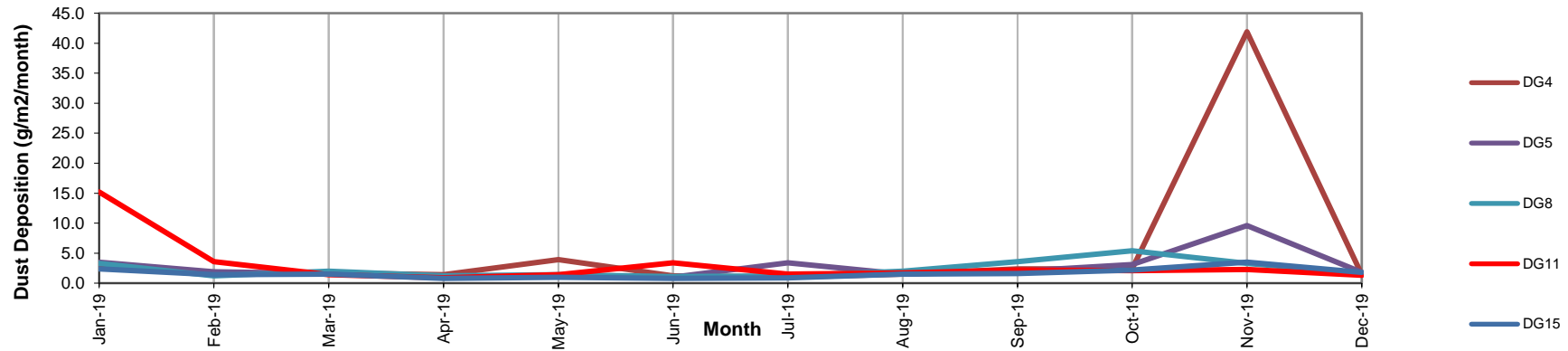
**Table 1 - Air Monitoring**

| EPL ID No. | Monitoring Point ID. | Pollutant          | Unit of Measure                  | Monitoring Frequency required by EPL | No. of times measured during month | Min. Value | Max. Value | Mean Value | Measurement | Annual Average | Limit | Exceed* (yes/no) | Date Last Sampled | Date Reported |
|------------|----------------------|--------------------|----------------------------------|--------------------------------------|------------------------------------|------------|------------|------------|-------------|----------------|-------|------------------|-------------------|---------------|
| 3          | DG4                  | Particulates - TIM | grams per square metre per month | Monthly                              | 1                                  |            |            |            | 1.4         |                |       |                  | 30/12/19          | 04/01/20      |
| 4          | DG5                  | Particulates - TIM | grams per square metre per month | Monthly                              | 1                                  |            |            |            | 1.8         | 2.7            | 4.0   | No               | 30/12/19          | 04/01/20      |
| 6          | DG8                  | Particulates - TIM | grams per square metre per month | Monthly                              | 1                                  |            |            |            | 1.7         |                |       |                  | 30/12/19          | 04/01/20      |
| 9          | DG11                 | Particulates - TIM | grams per square metre per month | Monthly                              | 1                                  |            |            |            | 1.3         |                |       |                  | 30/12/19          | 04/01/20      |
| 17         | DG15                 | Particulates - TIM | grams per square metre per month | Monthly                              | 1                                  |            |            |            | 1.8         |                |       |                  | 30/12/19          | 04/01/20      |
| 13         | HV1                  | PM10               | micrograms per cubic metre       | Every 6 days                         | 5                                  | 33.2       | 196.0      | 112.0      |             |                | 50    | Yes              | 28/12/19          | 14/01/20      |
| 19         | HV4                  | PM10               | micrograms per cubic metre       | Every 6 days                         | 5                                  | 38.0       | 207.0      | 122.2      |             |                | 50    |                  | 28/12/19          | 14/01/20      |
| 20         | HV5                  | PM10               | micrograms per cubic metre       | Every 6 days                         | 5                                  | 58.8       | 195.0      | 113.4      |             |                | 50    |                  | 28/12/19          | 14/01/20      |
| 22         | TEOM3                | PM10               | micrograms per cubic metre       | Continuous (24 Hr Average)           | 100.0%                             | 23.4       | 218.3      | 96.5       |             |                | 50    | Yes              |                   |               |
| 23         | TEOM4                | PM10               | micrograms per cubic metre       | Continuous (24 Hr Average)           | 100.0%                             | 24.5       | 187.6      | 84.4       |             |                | 50    |                  |                   |               |

**Notes:**

- Limits specified in the above table are from Development Consent SSD-6764.
- All exceedances recorded during the month were caused by local bushfire smoke and/or regional dust events.

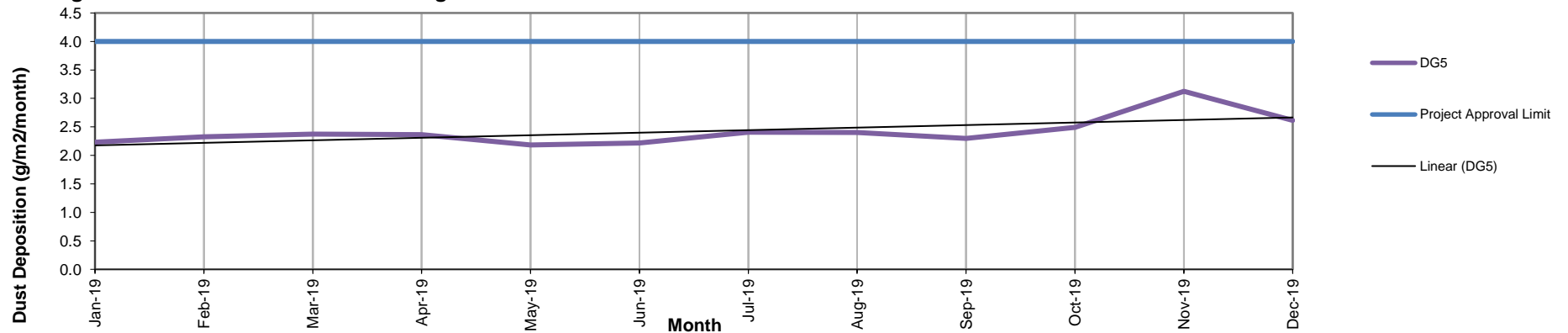
**Figure 1a. DG Results - 12 Month Trend**



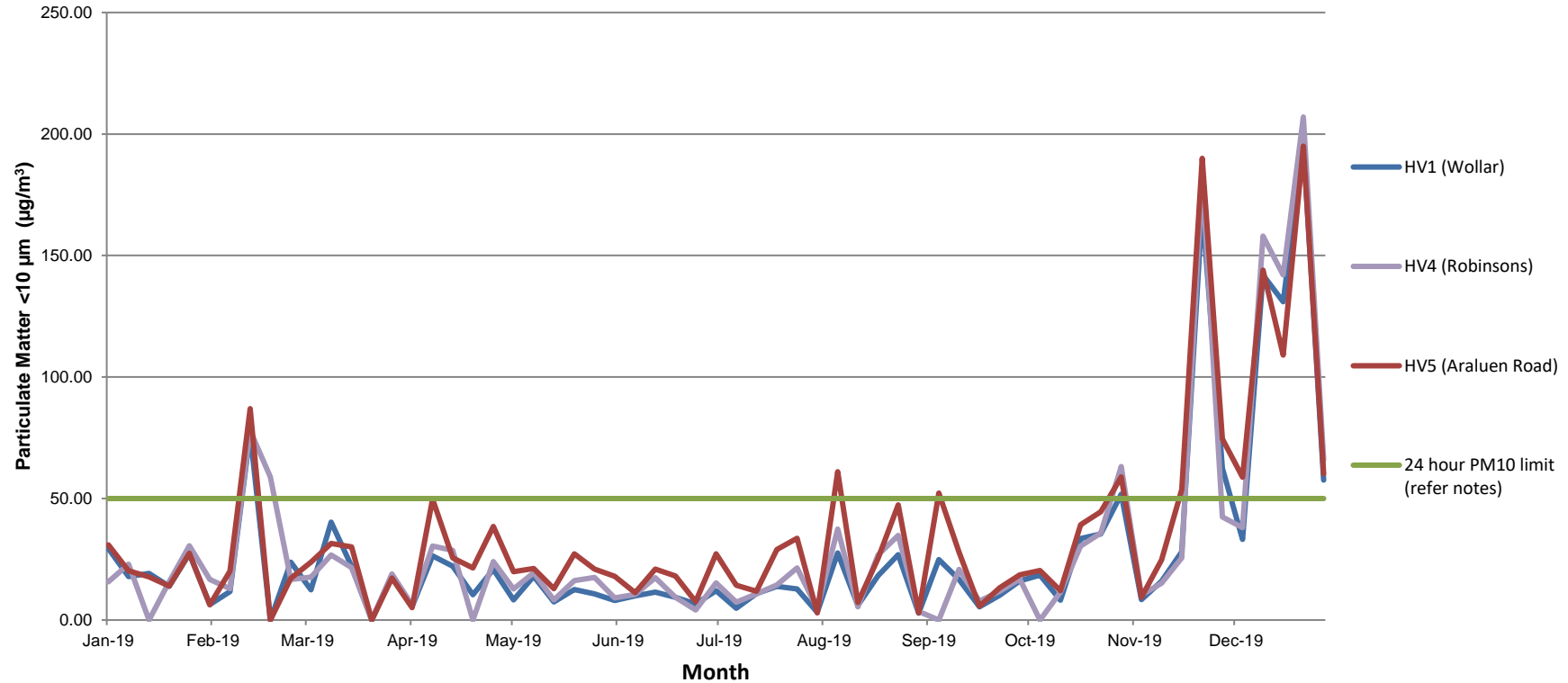
**Notes:**

1. Limit of 4 g/m<sup>2</sup>/month (annual average) applies to DG5 (Wollar Village) - refer Figure 1b.
2. The excessive dust result recorded at DG4 in November 2019 was due to high concentrations of organic matter. DG8's excessive dust level recorded in October 2019 was also due to a high concentration of organic matter.
3. The excessive dust result recorded by DG11 in January 2019 was caused by agricultural activities. During November 2019, DG5 accumulated a high concentration of ash due to bushfires in the area.

**Figure 1b. DG 5 Results - Annual Average**



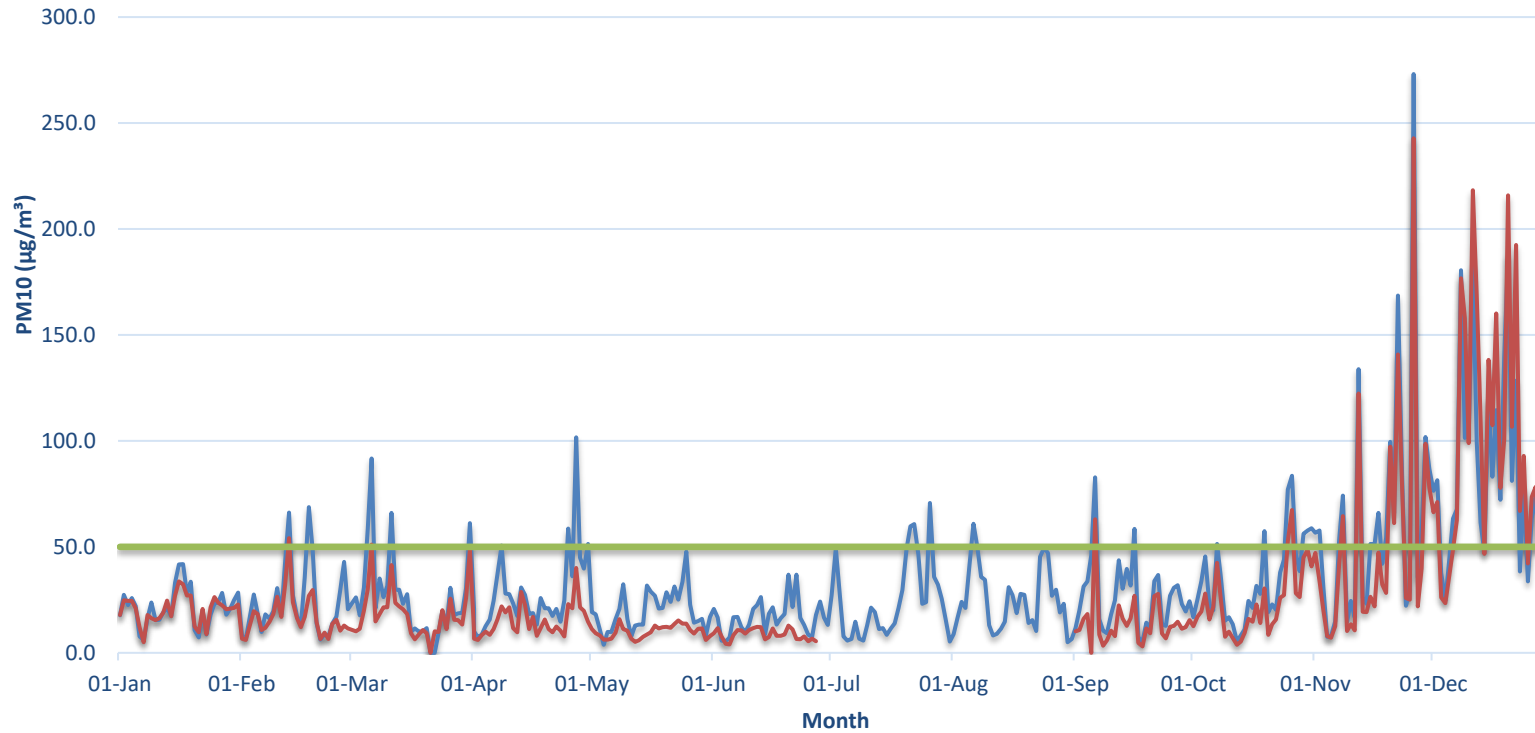
**Figure 2. HV (PM10) Results - 12 Month Trend**



**Notes:**

1. Limit doesn't apply for extraordinary events such as bushfires, prescribed burning, or dust storms.
2. Power outages prevented dust samples being collected from **HV4**: 14 January and 20 April 2019, **HV1**: 19 February 2019 and 21 March 2019, **HV5**: 19 February and 21 March.
3. PM10 dust levels above 50 µg/m³ recorded in February, October and November 2019 were caused by regional dust events - refer EPA PM10 dust graph on page 6 of this report.
4. The PM10 dust level exceeding 50µg/m³ recorded at HV5 in August 2019 was due to a hazard reduction burn to the west of Wilpinjong Mine in the Goodman State Conservation Area.
5. PM10 dust levels above 50 µg/m³ recorded during December 2019 were caused by bushfire smoke haze present in the area.

**Figure 3. TEOM (PM10) Results - 12 Month Trend**

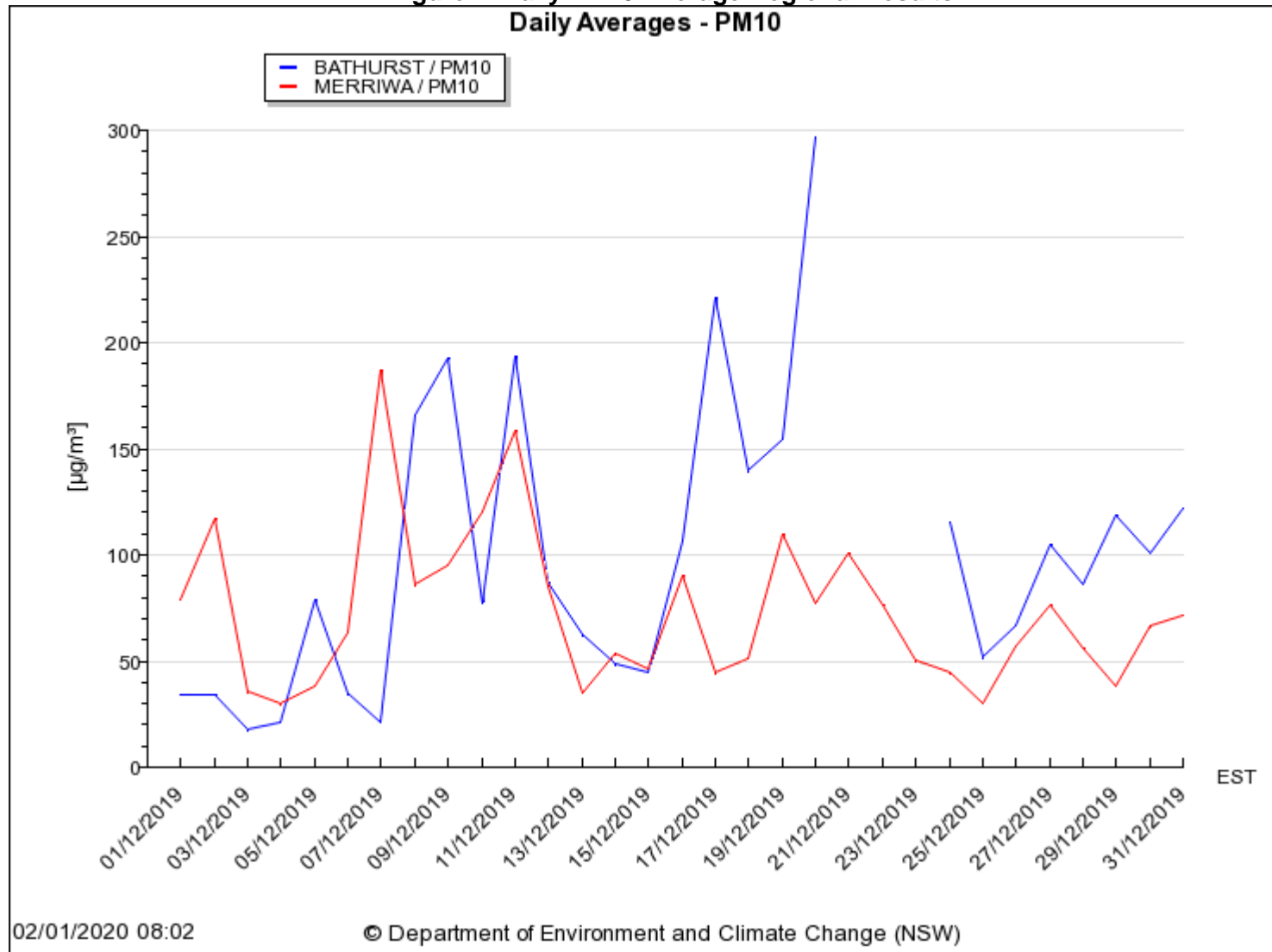


**Notes:**

1. Limit doesn't apply for extraordinary events such as bushfires, prescribed burning or dust storms
2. TEOM 4 (Araluen Rd) influenced by dust from Araluen Road generally during stable atmospheric conditions (i.e. temperature inversions)
3. Elevated PM10 dust levels recorded in February, March, April, September, October, November and December 2019 and January 2020 due to regional dust events and/or bushfire smoke.
4. The elevated PM10 dust levels recorded at TEOM 4 on 6th August and 16th September 2019 were due to a temperature inversion trapping road dust and lack of rainfall. Additionally, a hazard reduction burn was taking place to the west of Wilpinjong Mine in the Goodman State Forest which also contributed to the high reading.
4. PM10 data recorded at TEOM 3 between 28 June and 31 August 2019 is invalid due to instrument fault causing inaccurate results. The data is unable to be corrected or adjusted due to the nature of the failure.

— TEOM 4 (Araluen Rd)    — TEOM 3 (Wollar)    — 24 hour PM10 Limit (refer Notes)

Figure 4. Daily PM10 Average Regional Results



## Surface Water Monitoring

Surface water runoff is isolated and diverted around disturbed areas through the construction of water diversion bunds. Runoff from disturbed areas is diverted into on-site water retention dams.

A Reverse Osmosis (RO) Plant treats all water from the retention dams before it is discharged to Wilpinjong Creek. The EPL specifies limits for the quantity and quality of water that may be discharged from the site.

*The RO Plant has been non-operational since the end of November 2018. For this reason, no discharge data was recorded during the month.*



## Noise Monitoring

Environmental noise monitoring (“monitoring”) is carried out monthly.

The purpose of the monitoring is to assess whether mining operations are consistent with the objectives of the EPL and the development consent conditions.

In terms of this monitoring, it is undertaken:

1. by an independent noise consultant;
2. during the night-time; and
3. at the sites shown in **Figure 7**.

On pages 10 and 11 of this report are the noise levels and findings from the consultant’s report.

Table 4.2:  $L_{Aeq,15minute}$  GENERATED BY WCP AGAINST PROJECT SPECIFIC CRITERIA – DECEMBER 2019

| Location | Start Date and Time | Wind Speed<br>m/s <sup>1</sup> | Stability Class <sup>1</sup> | Criterion<br>dB | Criterion Applies? <sup>2</sup> | WCP<br>$L_{Aeq,15min}$ dB <sub>3</sub> | Exceedance <sup>4</sup> |
|----------|---------------------|--------------------------------|------------------------------|-----------------|---------------------------------|--|-------------------------|
| N6       | 09/12/2019 23:14    | 0.7                            | G                            | 37              | No                              | IA                                     | NA                      |
| N13      | 10/12/2019 00:35    | 0.0                            | G                            | 35              | No                              | <25                                    | NA                      |
| N14      | 10/12/2019 00:23    | 0.0                            | G                            | 35              | No                              | IA                                     | NA                      |
| N15      | 09/12/2019 22:54    | 1.0                            | G                            | 37              | No                              | <20                                    | NA                      |
| N17      | 09/12/2019 22:25    | 0.9                            | G                            | 38              | No                              | IA                                     | NA                      |
| N19      | 09/12/2019 22:00    | 0.8                            | G                            | 35              | No                              | IA                                     | NA                      |
| N20      | 09/12/2019 23:44    | 0.0                            | G                            | 35              | No                              | IA                                     | NA                      |
| N21      | 10/12/2019 00:49    | 0.7                            | G                            | 35              | No                              | <20                                    | NA                      |

Notes:

1. Wind speed is sourced from the WCP weather station, stability class is determined based on WCP inversion tower data;
2. Noise emission limits apply for all meteorological conditions, except for the following: wind speeds greater than 3 m/s above ground level; or stability category F temperature inversions and wind speeds greater than 2 m/s at 10m above ground level; or stability category G temperature inversion conditions;
3. Site-only  $L_{Aeq,15minute}$  attributed to WCP, including modifying factors if applicable; and
4. NA in exceedance column means criterion was not applicable due to atmospheric conditions outside those specified in EPL.

Table 4.3:  $L_{A1,1minute}$  GENERATED BY WCP AGAINST PROJECT SPECIFIC CRITERIA – DECEMBER 2019

| Location | Start Date and Time | Wind Speed<br>m/s <sup>1</sup> | Stability Class <sup>1</sup> | Criterion<br>dB | Criterion Applies? <sup>2</sup> | WCP<br>$L_{A1,1min}$ dB <sub>3</sub> | Exceedance <sup>4</sup> |
|----------|---------------------|--------------------------------|------------------------------|-----------------|---------------------------------|--------------------------------------|-------------------------|
| N6       | 09/12/2019 23:14    | 0.7                            | G                            | 45              | No                              | IA                                   | NA                      |
| N13      | 10/12/2019 00:35    | 0.0                            | G                            | 45              | No                              | <25                                  | NA                      |
| N14      | 10/12/2019 00:23    | 0.0                            | G                            | 45              | No                              | IA                                   | NA                      |
| N15      | 09/12/2019 22:54    | 1.0                            | G                            | 45              | No                              | <20                                  | NA                      |
| N17      | 09/12/2019 22:25    | 0.9                            | G                            | 45              | No                              | IA                                   | NA                      |
| N19      | 09/12/2019 22:00    | 0.8                            | G                            | 45              | No                              | IA                                   | NA                      |
| N20      | 09/12/2019 23:44    | 0.0                            | G                            | 45              | No                              | IA                                   | NA                      |
| N21      | 10/12/2019 00:49    | 0.7                            | G                            | 45              | No                              | <20                                  | NA                      |

Notes:

1. Wind speed is sourced from the WCP weather station, stability class is determined based on WCP inversion tower data;
2. Noise emission limits apply for all meteorological conditions, except for the following: wind speeds greater than 3 m/s above ground level; or stability category F temperature inversions and wind speeds greater than 2 m/s at 10m above ground level; or stability category G temperature inversion conditions;
3. Site-only  $L_{A1,1minute}$  attributed to WCP; and
4. NA in exceedance column means criterion was not applicable due to atmospheric conditions outside those specified in EPL.

## 6 SUMMARY

Global Acoustics was engaged by Wilpinjong Coal Pty Ltd to conduct a monthly noise survey of operations at WCP, an open cut coal mine located approximately 40 kilometres north east of Mudgee. The purpose of the attended noise monitoring survey is to quantify and describe the acoustic environment around the site and compare results with specified limits.

Attended environmental noise monitoring described in this report was undertaken during the night period of 9/10 December 2019 at eight monitoring locations.

Noise levels from WCP complied with relevant noise limits at all monitoring locations during the December 2019 monitoring. Criteria may not always be applicable due to meteorological conditions at the time of monitoring.

### **Global Acoustics Pty Ltd**

*Wilpinjong Coal received the report from Global Acoustics Pty Ltd on 17<sup>th</sup> December 2019.*

## Blasting

Monitoring is carried out near sensitive locations during blasting activities to determine the vibration in the air (overpressure) and earth (ground vibration). A summary of the results of this monitoring, and the limits specified in the EPL, are shown in **Tables 3** and **4**. **Figure 7** shows the actual overpressure and vibration levels recorded during the month.

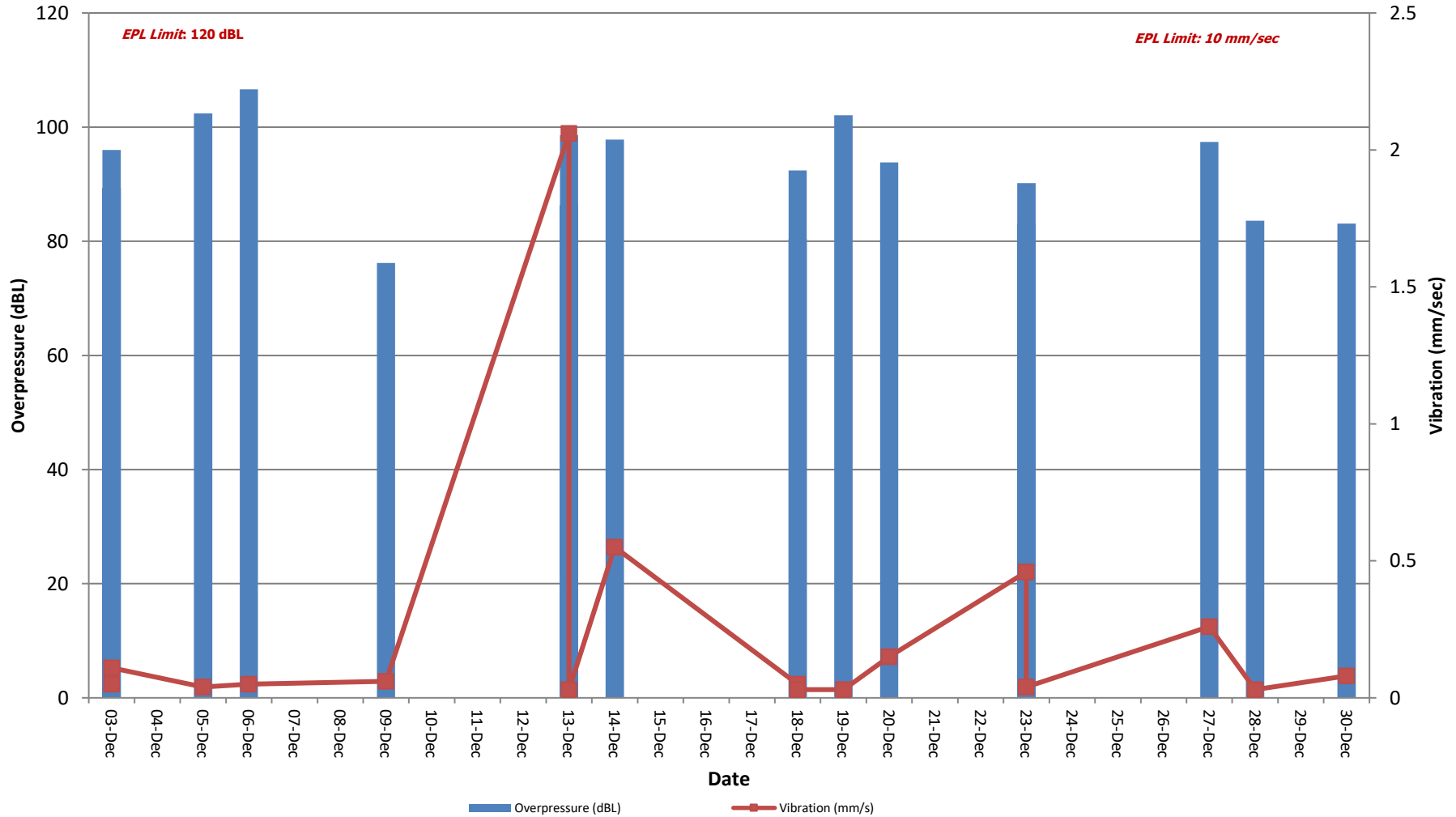
**Table 3 – Overpressure Monitoring Results**

| Location                                     | Month    | Number of Blasts | Minimum overpressure (dB(L)) | Maximum overpressure (dB(L)) | Mean overpressure (dB(L)) | EPL overpressure Limits (dB(L))            | Exceedance (yes/no) |
|--|----------|------------------|------------------------------|------------------------------|---------------------------|--|---------------------|
| Approx. 50m west of the Wollar Public School | December | 17               | 76.2                         | 106.6                        | 91.7                      | 115dB (95% blasts)<br>120 dB (100% blasts) | no                  |

**Table 4 – Vibration Monitoring Results**

| Location                                     | Month    | Number of Blasts | Minimum vibration (mm/sec) | Maximum vibration (mm/sec) | Mean vibration (mm/sec) | EPL vibration Limits (mm/sec)                | Exceedance (yes/no) |
|--|----------|------------------|----------------------------|----------------------------|-------------------------|--|---------------------|
| Approx. 50m west of the Wollar Public School | December | 17               | 0.03                       | 2.06                       | 0.24                    | 5 mm/s (95% blasts)<br>10 mm/s (100% blasts) | no                  |

Figure 7. Overpressure (dBL) and Vibration (mm/sec) recorded during Month



### Weather Monitoring

Continuous weather monitoring occurs onsite at the location shown on Figures 5 and 6 (**Meteorological Station**). The Meteorological Station continuously monitors for: rainfall; relative humidity; temperature (i.e. at 2m, 10m & 60m), barometric pressure, wind speed, wind direction and temperature lapse rate.

The temperature lapse rate is a measure of stable atmospheric conditions and is determined by measuring air temperature at two elevations 58m apart (i.e. 2m and 60m from ground level) and extrapolating the temperature difference over 58m to determine the lapse rate per °C/100m.

Table 5 shows the meteorological data recorded during the month.

**Table 5 – Monthly Meteorological Data**

| Date       | Temperature (°C) |      |      |      |      |      |      |      |      | Humidity (%) |      |      | Prevailing Wind |     |      | Rain (mm) | Bar (hPa) | Lapse Rate (°C/100m) |      |
|------------|------------------|------|------|------|------|------|------|------|------|--------------|------|------|-----------------|-----|------|-----------|-----------|----------------------|------|
|            | 2m               |      |      | 10m  |      |      | 60m  |      |      | Speed        |      |      | Dir (Deg)       |     |      |           |           |                      |      |
|            | Avg              | Min  | Max  | Avg  | Min  | Max  | Avg  | Min  | Max  | Avg          | Min  | Max  |                 | Avg | Min  | Max       | Max       |                      |      |
| 1/12/2019  | 21.2             | 13.8 | 27.1 | 20.8 | 14.1 | 25.8 | 20.4 | 14.8 | 24.6 | 32.1         | 10.2 | 59   | 3.5             | 0   | 8.8  | 264       | 0         | 1002.2               | 4.7  |
| 2/12/2019  | 14.9             | 11.5 | 17.9 | 14.6 | 11   | 17.2 | 14.1 | 10.8 | 16.7 | 54.1         | 35.8 | 84   | 5.3             | 1.6 | 10.7 | 258       | 3         | 1000.1               | 1.2  |
| 3/12/2019  | 18.5             | 11.1 | 25.2 | 18.1 | 11.2 | 24.3 | 17.6 | 11.7 | 23.6 | 36.2         | 20.2 | 56.9 | 4.1             | 1.5 | 7.8  | 265       | 0         | 1007.2               | 1.6  |
| 4/12/2019  | 21.9             | 13.3 | 28.5 | 21.5 | 13.3 | 27.5 | 21.5 | 15.3 | 26.5 | 26.4         | 10.8 | 50.6 | 3.8             | 1.2 | 8.1  | 254       | 0         | 1009.2               | 5.4  |
| 5/12/2019  | 23.7             | 10.9 | 32.1 | 23.6 | 12.1 | 31.4 | 24   | 14.8 | 30.8 | 24.1         | 9.8  | 50.9 | 2.9             | 0   | 8.5  | 253       | 0         | 1008.5               | 3.3  |
| 6/12/2019  | 24.3             | 12.3 | 32.5 | 24.3 | 13.4 | 31.3 | 24.9 | 17.2 | 30.2 | 22.2         | 8.3  | 45.9 | 2.9             | 0   | 8.9  | 250       | 0         | 1006.6               | 3.5  |
| 7/12/2019  | 23.8             | 10.4 | 32.7 | 23.7 | 11.8 | 31.9 | 24.3 | 14.2 | 31   | 21.7         | 7.9  | 50.3 | 1.4             | 0   | 5.1  | 218       | 0         | 1010.1               | 10.4 |
| 8/12/2019  | 24.7             | 17.3 | 33.3 | 23.9 | 17.2 | 32.3 | 23.9 | 17.4 | 31.4 | 41.2         | 16.8 | 64.4 | 2.6             | 0.4 | 5.7  | 79        | 0         | 1014.9               | 2.3  |
| 9/12/2019  | 26.3             | 17.3 | 37.4 | 25.9 | 17.2 | 36.6 | 26   | 16.7 | 35.5 | 46.8         | 13.2 | 81.9 | 0.6             | 0   | 4.5  | 75        | 0         | 1015.9               | 3.8  |
| 10/12/2019 | 30.3             | 17   | 39.9 | 30.2 | 17.4 | 39   | 30.6 | 19.1 | 38.3 | 27.3         | 8.3  | 62.9 | 1.2             | 0   | 4.7  | 236       | 0         | 1010.3               | 7.9  |
| 11/12/2019 | 25.4             | 18.6 | 37.4 | 24.5 | 18   | 36.6 | 24.2 | 17.8 | 35.9 | 51.2         | 12.8 | 74   | 2.5             | 0.6 | 5.8  | 73        | 0         | 1010.4               | -0.7 |
| 12/12/2019 | 24.1             | 18.5 | 33.7 | 23.2 | 17.5 | 32.8 | 22.9 | 17.8 | 31.9 | 49.9         | 9.3  | 74.1 | 1.5             | 0.2 | 5.2  | 68        | 0         | 1010.1               | -0.7 |
| 13/12/2019 | 22.9             | 18   | 30.3 | 21.8 | 16.4 | 29.4 | 21.7 | 17.2 | 28.7 | 50.7         | 16.8 | 72.8 | 1.6             | 0.6 | 4.2  | 78        | 0         | 1011.1               | 0.0  |
| 14/12/2019 | 25.1             | 15   | 33.2 | 24.4 | 14.5 | 31.9 | 24.3 | 16.4 | 31   | 39.6         | 11.4 | 77.5 | 1.6             | 0   | 5.2  | 232       | 0         | 1008.5               | 3.2  |
| 15/12/2019 | 26.5             | 17.1 | 34.7 | 26.2 | 17.1 | 33.8 | 25.8 | 18.3 | 32.9 | 37.5         | 10   | 74.7 | 1.5             | 0   | 6.4  | 245       | 0         | 1007.7               | 3.3  |
| 16/12/2019 | 26.1             | 17.3 | 35.5 | 25.7 | 17.5 | 33.6 | 25.5 | 17.6 | 33.2 | 28.4         | 11.2 | 63.4 | 1.1             | 0   | 5.8  | 149       | 0         | 1008.8               | 10.5 |
| 17/12/2019 | 22.5             | 16   | 30.3 | 21.6 | 14.6 | 29.1 | 21.4 | 15.5 | 28.7 | 48.7         | 27.8 | 70.3 | 3.6             | 2   | 6.3  | 77        | 0         | 1016.3               | -0.5 |
| 18/12/2019 | 24.4             | 13.6 | 34.9 | 23.7 | 14   | 33.8 | 24.4 | 14.5 | 32.9 | 37.2         | 11.9 | 74.3 | 1.7             | 0   | 3.8  | 83        | 0         | 1016.3               | 3.8  |
| 19/12/2019 | 28.9             | 15.4 | 39   | 28.3 | 15.1 | 38   | 29.2 | 18.3 | 37.3 | 26.1         | 10.7 | 51   | 1.7             | 0   | 6.5  | 268       | 0         | 1013.3               | 8.4  |
| 20/12/2019 | 27.4             | 20.3 | 36.6 | 26.6 | 19.7 | 35.2 | 26.6 | 20.3 | 34.9 | 27.3         | 13.4 | 55.6 | 2.9             | 1   | 5.1  | 73        | 0         | 1015.4               | 2.3  |
| 21/12/2019 | 30.5             | 18   | 42.5 | 30.1 | 17.7 | 41.7 | 30.5 | 18.6 | 41   | 37.2         | 8.5  | 75.6 | 1               | 0   | 5.8  | 262       | 0         | 1010.8               | 12.8 |
| 22/12/2019 | 23               | 18.2 | 30.5 | 22.3 | 17.8 | 29.8 | 21.8 | 17.5 | 30.3 | 51.1         | 29.3 | 62.7 | 5.3             | 3.5 | 7.7  | 76        | 0         | 1016.1               | -0.4 |
| 23/12/2019 | 21.8             | 17.5 | 26.9 | 21.1 | 16.9 | 25.9 | 20.7 | 16.8 | 25.2 | 58.2         | 44.1 | 69.6 | 3.9             | 2.3 | 6.1  | 79        | 0         | 1016                 | -1.1 |
| 24/12/2019 | 24.7             | 19.6 | 32.6 | 24   | 18.9 | 31.6 | 23.7 | 19.1 | 31.1 | 58.6         | 28.5 | 78.7 | 3.4             | 1.3 | 6.9  | 77        | 0         | 1010.8               | -0.7 |
| 25/12/2019 | 25.2             | 20.8 | 31.5 | 24.6 | 20.1 | 30.2 | 24.2 | 20.3 | 29.2 | 52.9         | 31.7 | 70.8 | 4.1             | 2.9 | 6    | 81        | 0         | 1012.9               | -0.5 |
| 26/12/2019 | 26.5             | 17.9 | 34.2 | 25.7 | 18   | 33   | 25.6 | 18.7 | 32.4 | 45.7         | 21.9 | 76.5 | 2               | 0   | 4.5  | 80        | 0         | 1014.6               | 2.3  |
| 27/12/2019 | 27.6             | 19.6 | 35.2 | 26.7 | 19.7 | 34.1 | 26.9 | 20.1 | 33.4 | 32.3         | 11.5 | 52.2 | 2.3             | 0.8 | 4.8  | 77        | 0         | 1015.4               | 2.3  |
| 28/12/2019 | 28.3             | 17.5 | 38.2 | 28   | 17.3 | 37.5 | 28.5 | 18.9 | 36.3 | 34.3         | 8.1  | 69.3 | 0.4             | 0   | 3.7  | 54        | 0         | 1014.6               | 10.4 |
| 29/12/2019 | 30               | 16.8 | 39.7 | 29.7 | 17.8 | 38.6 | 30.4 | 20   | 37.8 | 21.7         | 7.3  | 44.8 | 1.2             | 0   | 5.5  | 251       | 0         | 1013.2               | 10.2 |
| 30/12/2019 | 31.3             | 19.9 | 39.5 | 31   | 20.1 | 38.5 | 31.4 | 22   | 37.5 | 20.9         | 9.2  | 41.2 | 1.6             | 0   | 5.2  | 268       | 0         | 1010.2               | 8.2  |
| 31/12/2019 | 31.5             | 20   | 39.6 | 31.5 | 22   | 38.7 | 32.3 | 24.8 | 37.8 | 22.1         | 8.8  | 48.6 | 2.3             | 0   | 5.7  | 282       | 0         | 1006.9               | 11.9 |

Figure 6 – Air (Dust) Monitoring Locations

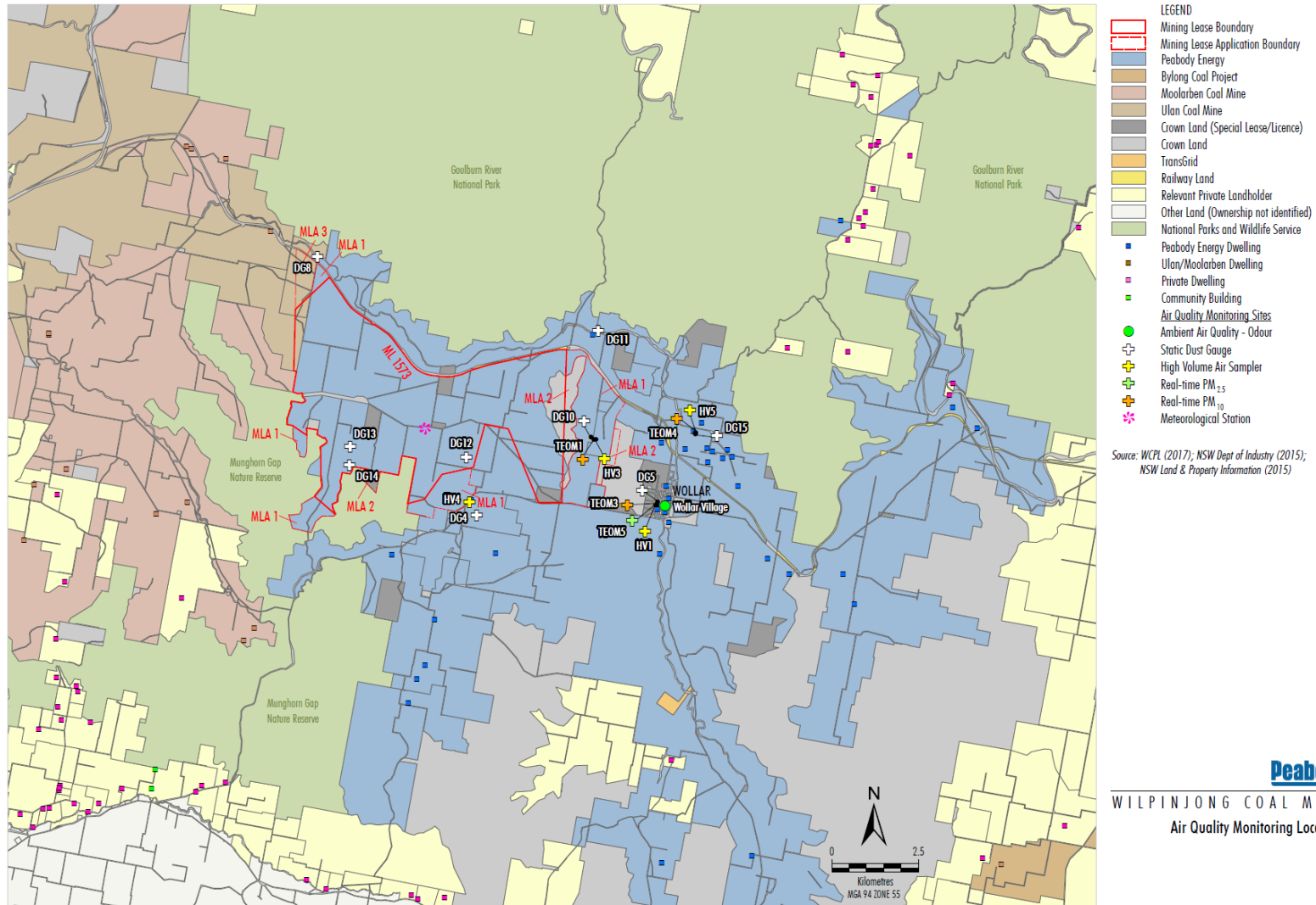
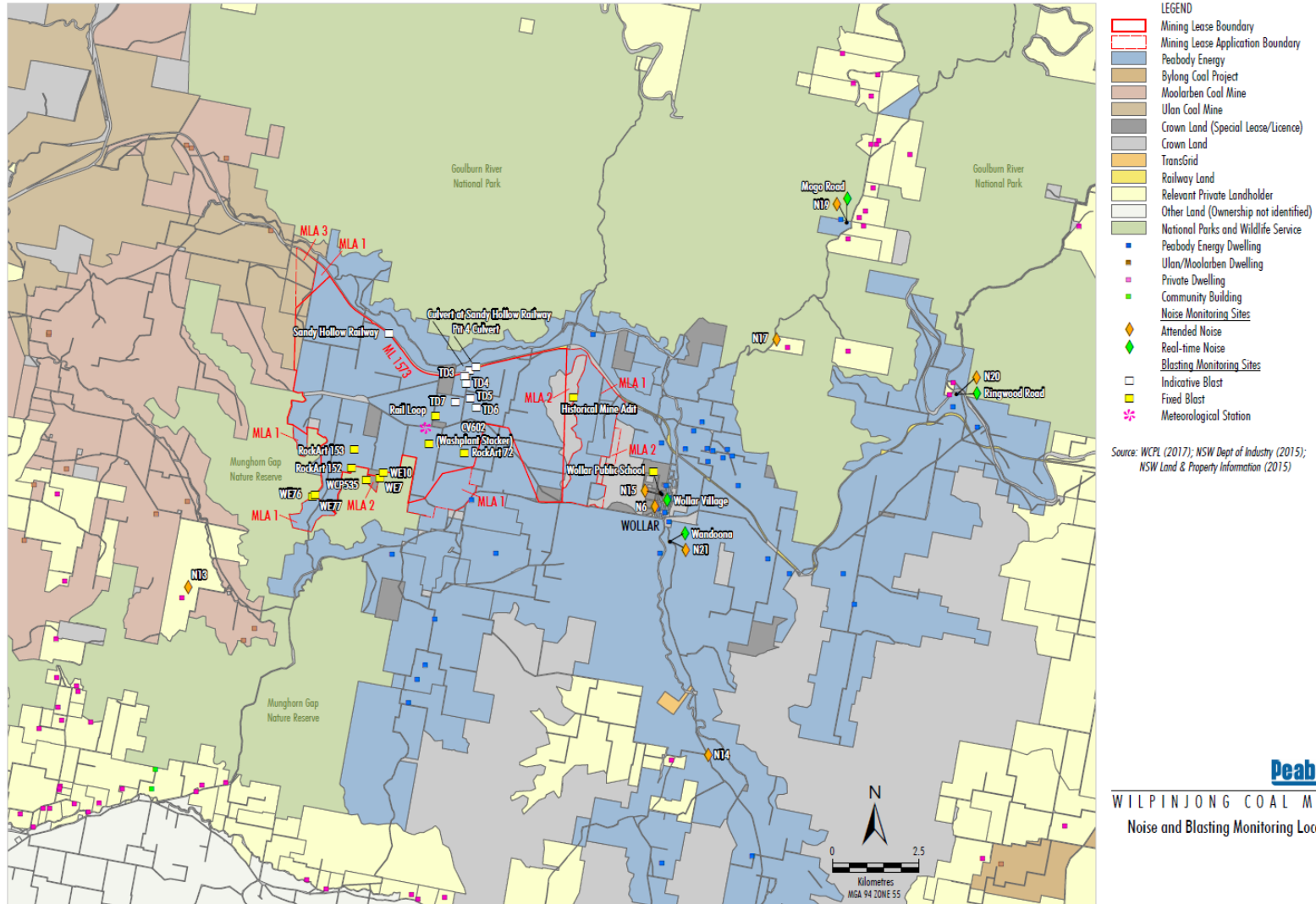


Figure 7 – Attended Noise Monitoring Locations





**Figure 8 – Wollar Village Environmental Monitoring Sites**



|   |                                    |
|---|------------------------------------|
| <b>LEGEND</b>   |                                    |
| <span style="background-color: #ADD8E6; border: 1px solid black; display: inline-block; width: 15px; height: 10px;"></span> | Peabody Energy                     |
| <span style="background-color: #808080; border: 1px solid black; display: inline-block; width: 15px; height: 10px;"></span> | Crown Land (Special Lease/Licence) |
| <span style="background-color: #A9A9A9; border: 1px solid black; display: inline-block; width: 15px; height: 10px;"></span> | Crown Land                         |
| <span style="background-color: #FFD700; border: 1px solid black; display: inline-block; width: 15px; height: 10px;"></span> | Railway Land                       |
| <span style="background-color: #FFFFE0; border: 1px solid black; display: inline-block; width: 15px; height: 10px;"></span> | Relevant Private Landholder        |
| 1   | Landholder Reference Number        |
| <span style="color: blue;">■</span>   | Peabody Energy Dwelling            |
| <span style="color: green;">■</span>  | Community Building                 |
| <span style="color: red;">■</span>  | Private Dwelling                   |
| #   | Special Lease/Licence Holder       |
| <b>Noise Monitoring Sites</b>   |                                    |
| <span style="color: orange;">◆</span>   | Attended Noise                     |
| <span style="color: green;">◆</span>  | Real-time Noise                    |
| <b>Blasting Monitoring Sites</b>  |                                    |
| <span style="background-color: yellow; border: 1px solid black; display: inline-block; width: 10px; height: 10px;"></span>  | Fixed Blast                        |
| <b>Air Quality Monitoring Sites</b>   |                                    |
| <span style="color: green;">●</span>  | Ambient Air Quality - Odour        |
| <span style="color: blue;">⊕</span>   | Static Dust Gauge                  |
| <span style="color: green;">⊕</span>  | High Volume Air Sampler            |
| <span style="color: green;">⊕</span>  | Real-time PM <sub>2.5</sub>        |
| <span style="color: orange;">⊕</span>   | Real-time PM <sub>10</sub>         |

Source: WCPL (2017); NSW Dept of Industry (2015); NSW Land & Property Information (2016)