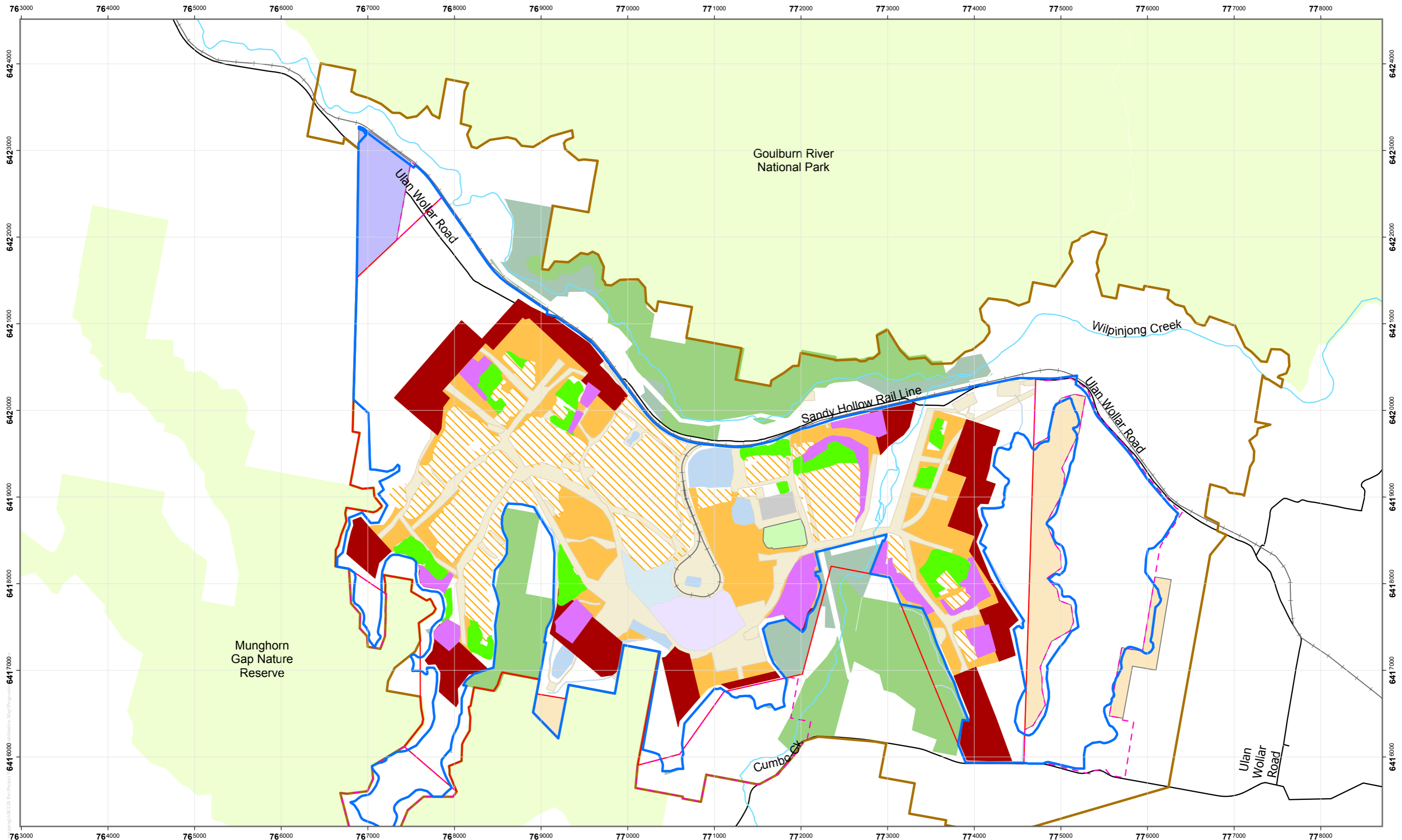
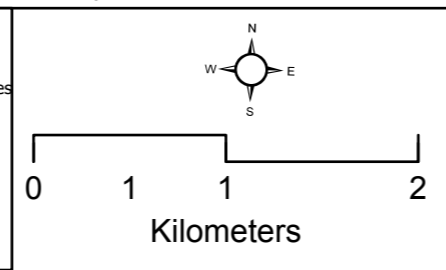


## **APPENDIX 8 – PLANS**

# Plans



SSD 6764 - Approval Boundary	Rail	Tailings Storage Area
SSD 6764 - Disturbance Boundary	Rehabilitation Areas	Mine Water Dams
ML1779 Boundary	Completed 2018 Rehabilitation Areas - 98ha	Levees and Water Management Structures
ML1573 Boundary	Proposed 2019 Rehabilitation Areas - 121ha	Infrastructure
MLA 2	Active Mining Areas 2018	Overburden Emplacement Areas
MLA 3	Constrained Infrastructure	Regeneration Areas
Creeklines	CHPP Infrastructure	ECAs
Roads	Tailings Storage Facility - Decommissioning	National Parks



<b>Plan 5 - Actual Rehabilitation Annual Review 2018 Wilpinjong Coal Mine</b>			
Spatial Reference Name: GDA 1994 MGA Zone 55	Review ID: 1	Date Exported: 25/03/2019 4:49 PM	Drawn: JF
		Drawing No. WILP - AR 2018	

Peabody makes every effort to ensure the quality of the information available on this map. Before relying on the information on this map, users should carefully evaluate its accuracy, currency, completeness and relevance for their purposes, and should obtain any appropriate professional advice relevant to their circumstances.  
Peabody cannot guarantee and assumes no responsibility for the accuracy, currency or completeness of the information and by using this map you accept that Peabody has no liability for any loss or damage in any form whatsoever caused directly or indirectly from the use of this map.

Detailed EIS/EA: Wilpinjong Coal Mine Rehabilitation Project  
 641 6000 Utilization Map Progress