

**APPENDIX 3D – GROUNDWATER
MONITORING DATA**

Summary of Groundwater Results 2018

Site	Water Level (mbgl)			pH			EC (uS/cm)		
	Min	Max	Ave	Min	Max	Ave	Min	Max	Ave
GWa1	4.95	4.97	4.96	0.00	0.00	0.00	0.00	0.00	0.00
GWa2	3.96	4.66	4.40	6.70	7.00	6.91	1310.00	1440.00	1395.00
GWa3	5.61	5.61	5.61	0.00	0.00	0.00	0.00	0.00	0.00
GWa4	4.87	5.17	4.97	0.00	0.00	0.00	0.00	0.00	0.00
GWa5	3.87	4.21	3.99	7.40	7.70	7.52	11700.00	14800.00	13360.00
GWa6	2.89	2.89	2.89	0.00	0.00	0.00	0.00	0.00	0.00
GWa7	4.61	5.20	4.97	7.10	7.10	7.10	10800.00	11000.00	10900.00
GWa8	1.56	2.34	1.87	6.90	7.10	7.03	2000.00	2580.00	2156.67
GWa10	4.39	4.64	4.55	6.90	7.20	7.07	3220.00	3400.00	3285.00
GWa11	3.42	4.20	3.68	7.50	7.80	7.69	1560.00	3570.00	2062.22
GWa12	5.39	5.80	5.70	0.00	0.00	0.00	0.00	0.00	0.00
GWa14	4.96	4.97	4.97	0.00	0.00	0.00	0.00	0.00	0.00
GWa15	3.57	3.66	3.62	0.00	0.00	0.00	0.00	0.00	0.00
GWa16	3.95	4.07	4.04	0.00	0.00	0.00	0.00	0.00	0.00
GWa32	1.91	3.16	2.40	7.10	7.40	7.24	3250.00	3800.00	3385.83
GWa34	4.49	4.55	4.53	4.30	4.90	4.57	5970.00	6060.83	6060.83
GWa36	5.84	5.94	5.92	0.00	0.00	0.00	0.00	0.00	0.00
GWc1	10.59	11.31	10.93	6.90	7.20	7.10	3410.00	3660.00	3535.83
GWc2	14.50	15.87	15.26	7.00	7.20	7.12	1210.00	1290.00	1249.17
GWc3	13.10	15.32	14.35	6.70	6.90	6.82	3840.00	4500.00	4133.33
GWc4	14.98	15.43	15.17	6.60	6.70	6.64	2300.00	2580.00	2385.00
GWc5	5.56	6.02	5.83	6.50	6.70	6.63	3570.00	5740.00	5221.67
GWc10	4.60	5.63	5.10	6.70	7.40	7.11	3660.00	3800.00	3726.36
GWc11	15.15	16.02	15.64	6.50	6.70	6.54	3300.00	3850.00	3615.00
GWc12	32.02	36.57	34.92	7.20	7.60	7.43	1270.00	1660.00	1425.00
GWc14	22.89	33.27	30.42	7.30	7.70	7.39	940.00	1160.00	1083.64
GWc15	22.60	29.37	26.91	6.60	7.10	6.88	1600.00	3260.00	2286.67
GWc16	25.61	29.79	27.73	7.10	7.40	7.20	1940.00	2520.00	2179.17
GWc17	42.76	43.81	43.37	6.90	7.10	6.97	1920.00	2800.00	2171.11
GWc18	0.00	0.00	0.00	0.00	0.00	0.00	0.00	0.00	0.00
GWc19	31.06	35.47	33.27	6.50	6.50	6.50	1860.00	1930.00	1895.00
GWc24	22.19	23.16	22.57	3.70	6.00	5.20	3450.00	3580.00	3530.00
GWc25	27.94	29.53	28.67	6.90	7.60	7.33	1550.00	1710.00	1653.33
GWc26	39.47	40.79	40.00	7.10	7.40	7.25	1240.00	1480.00	1333.33
GWc27	15.62	16.16	15.87	4.30	5.70	4.98	15.62	16.16	15.87
GWc28	39.16	44.77	41.81	6.70	6.80	6.78	3000.00	3540.00	3243.33
GWc29	39.91	45.01	42.21	6.80	7.10	6.93	2170.00	2580.00	2258.33
GWc30	31.09	33.25	32.21	6.70	7.00	6.80	2930.00	3100.00	3004.17
GWc31	50.61	51.29	51.03	6.80	6.80	6.80	4190.00	4190.00	4190.00
GWc32	4.06	4.36	4.24	6.50	6.80	6.68	3380.00	3650.00	3448.33
GWc33	39.39	42.22	40.62	12.40	12.60	12.48	5220.00	6950.00	6004.17
GWc34	20.31	20.70	20.48	7.00	7.10	7.08	4330.00	4700.00	4536.00
GWc35	42.06	47.37	44.13	6.90	7.40	7.10	538.00	1240.00	764.25
GWc36	15.13	15.89	15.67	6.30	6.50	6.41	3350.00	4150.00	3843.33

Summary of Groundwater Results 2017

Site	Water Level (mbgl)			pH			EC (uS/cm)		
	Min	Max	Ave	Min	Max	Max	Min	Max	Ave
GWa1	0.00	0.00	0.00	0.00	0.00	0.00	4.89	5.02	4.93
GWa2	2.58	3.70	3.33	6.50	6.60	6.53	1420.00	1690.00	1518.57
GWa3	4.10	4.51	4.31	7.20	7.30	7.22	1550.00	2000.00	1816.67
GWa4	0.00	0.00	0.00	0.00	0.00	0.00	0.00	0.00	0.00
GWa5	3.60	4.01	3.83	7.40	7.60	7.49	10400.00	15800.00	13296.36
GWa6	1.16	2.15	1.75	7.60	7.60	7.60	8210.00	13600.00	12101.67
GWa7	4.52	4.60	4.56	7.00	7.00	7.00	10400.00	10500.00	10450.00
GWa8	1.42	1.98	1.59	6.90	7.10	7.02	2330.00	2520.00	2430.00
GWa10	3.82	4.17	3.96	6.90	7.10	6.98	3320.00	3470.00	3399.17
GWa11	3.34	3.75	3.49	7.20	7.80	7.65	1450.00	1960.00	1707.50
GWa12	3.86	4.97	4.48	7.70	7.80	7.74	820.00	870.00	843.00
GWa14	4.97	31.45	18.21	0.00	0.00	0.00	0.00	0.00	0.00
GWa15	2.81	3.21	3.07	7.10	7.10	7.10	710.00	710.00	710.00
GWa16	3.47	3.52	3.50	7.30	7.40	7.35	18300.00	18500.00	18400.00
GWa22	-	-	-	-	-	-	-	-	-
GWa32	1.81	3.93	2.19	7.10	7.30	7.21	3480.00	4430.00	4062.50
GWa34	2.43	4.49	4.246818182	4.30	4.90	4.51	5190.00	6210.00	5843.333333
GWc1	9.51	10.20	9.77	7.00	7.30	7.15	2080.00	3540.00	2913.33
GWc2	12.85	14.43	13.80	7.00	7.20	7.11	1240.00	1300.00	1271.67
GWc3	9.27	11.46	10.21	6.80	6.90	6.81	3920.00	4410.00	4037.50
GWc4	14.55	14.85	14.69	6.60	6.70	6.65	2370.00	3110.00	2467.50
GWc5	5.71	6.33	6.00	6.50	6.70	6.61	5340.00	5620.00	5515.00
GWc10	1.84	3.93	2.44	6.50	7.00	6.79	3530.00	3710.00	3605.00
GWc11	14.19	14.59	14.37	6.50	6.60	6.55	3510.00	3710.00	3649.17
GWc12	30.04	34.60	32.61	7.10	7.50	7.28	1160.00	3580.00	1975.00
GWc14	26.33	31.45	29.27	7.30	7.40	7.34	1090.00	1120.00	1104.17
GWc15	2.81	3.21	3.07	7.10	7.10	7.10	710.00	710.00	710.00

Summary of Groundwater Results 2016

Site	Water Level (mbgl)			pH			EC (uS/cm)		
	Min	Max	Ave	Min	Max	Ave	Min	Max	Ave
GWa1	4.85	5.20	4.94	0.00	0.00	0.00	0.00	0.00	0.00
GWa2	1.37	4.27	3.09	6.60	7.00	6.76	1480.00	1910.00	1621.82
GWa3	3.62	5.12	4.22	7.00	7.40	7.17	500.00	2580.00	1281.43
GWa4	4.02	4.89	4.56	7.00	7.20	7.10	3040.00	3850.00	3546.67
GWa5	2.54	4.33	3.68	7.20	7.60	7.40	8920.00	14200.00	11310.91
GWa6	1.04	2.44	1.62	7.50	7.80	7.63	6640.00	13600.00	9832.00
GWa7	3.25	4.87	4.12	7.00	7.80	7.26	12.83	10800.00	5788.21
GWa8	1.10	2.28	1.59	6.80	7.20	7.03	2080.00	2520.00	2234.55
GWa10	3.03	3.99	3.62	6.80	7.30	6.98	2660.00	3590.00	3350.83
GWa11	3.16	3.62	3.40	7.40	7.70	7.53	1700.00	3070.00	2289.17
GWa12	3.28	5.54	3.93	7.60	7.70	7.63	890.00	1250.00	1030.00
GWa14	1.53	1.53	1.53	7.80	7.80	7.80	790.00	790.00	790.00
GWa15	2.48	3.73	3.41	7.20	7.60	7.38	290.00	2910.00	2354.00
GWa16	0.00	0.00	0.00	0.00	0.00	0.00	0.00	0.00	0.00
GWa22	3.87	3.92	3.90	6.90	7.10	7.00	5340.00	5470.00	5405.00

Site	Water Level (mbgl)			pH			EC (uS/cm)		
	Min	Max	Ave	Min	Max	Ave	Min	Max	Ave
GWa32	1.56	2.85	2.11	7.00	7.30	7.16	3740.00	5550.00	4255.00
GWa34	2.80	4.71	4.2275	4.10	6.50	5.25	190.00	6640.00	4740
GWc1	8.62	9.61	9.19	6.90	7.20	7.05	2050.00	3370.00	2762.73
GWc2	12.23	14.62	13.83	7.00	7.20	7.06	1240.00	1290.00	1260.91
GWc3	8.93	14.23	10.77	6.70	7.00	6.82	3810.00	4250.00	4044.55
GWc4	14.26	14.57	14.45	6.70	7.00	6.82	1980.00	2470.00	2348.00
GWc5	5.91	6.56	6.18	6.40	6.80	6.58	5480.00	5700.00	5582.73
GWc10	1.40	2.37	1.97	6.50	7.30	6.94	3580.00	4020.00	3847.50
GWc11	13.34	14.32	13.79	6.20	6.50	6.34	3470.00	3710.00	3573.33
GWc12	26.52	32.29	29.51	6.90	7.30	7.11	1180.00	4130.00	1842.73
GWc14	22.97	30.37	27.10	7.20	7.30	7.25	1080.00	1170.00	1107.27
GWc15	19.37	25.55	22.56	6.50	6.70	6.55	3180.00	3370.00	3266.36

Summary of Groundwater Results 2015

Site	Water Level (mbgl)			pH			EC (uS/cm)		
	Min	Max	Ave	Min	Max	Ave	Min	Max	Ave
GWa1	4.94	5.21	5.05	0.00	0.00	-	0.00	0.00	-
GWa2	3.78	4.20	4.01	6.70	6.90	6.81	1400.00	1510.00	1431.67
GWa3	4.88	5.45	5.22	6.90	7.20	7.03	2120.00	2640.00	2396.67
GWa4	3.80	13.67	5.08	6.50	7.20	6.92	2350.00	5260.00	4381.11
GWa5	3.24	4.19	3.67	7.00	7.50	7.23	9950.00	11070.00	10511.67
GWa6	2.47	2.79	2.72	7.50	7.60	7.55	8370.00	8830.00	8600.00
GWa7	4.66	5.21	4.95	7.00	7.30	7.05	12330.00	15270.00	13656.00
GWa8	1.42	2.25	1.72	6.80	7.10	6.95	2060.00	2290.00	2174.17
GWa10	3.43	4.18	3.87	6.80	7.00	6.90	3470.00	3840.00	3575.83
GWa11	3.16	4.07	3.57	7.40	7.70	7.53	2060.00	3920.00	2789.17
GWa12	5.04	5.85	5.62	0.00	0.00	-	0.00	0.00	0.00
GWa14	4.54	5.01	4.85	0.00	0.00	-	0.00	0.00	-
GWa15	3.54	3.69	3.62	7.20	7.40	7.30	2860.00	2960.00	2934.00
GWc1	9.62	10.12	9.85	6.90	7.10	7.03	2200.00	3320.00	2682.50
GWc2	12.47	14.51	13.61	7.00	7.30	7.13	1180.00	1300.00	1240.83
GWc3	9.88	10.73	10.27	6.70	6.80	6.74	4190.00	4630.00	4511.67
GWc4	13.23	14.09	13.83	6.40	6.70	6.56	2240.00	2480.00	2380.83
GWc5	5.81	6.47	6.08	6.40	6.70	6.56	5520.00	5770.00	5659.17
GWc10	2.66	5.04	3.98	6.90	7.50	7.22	3730.00	4020.00	3910.83
GWc11	13.49	14.80	14.20	6.10	6.40	6.23	3670.00	3820.00	3761.67
GWc12	24.28	32.33	27.79	7.10	7.60	7.24	1400.00	1700.00	1568.33
GWc14	19.64	29.58	24.56	7.20	7.40	7.26	1120.00	1170.00	1148.33
GWc15	15.32	23.11	19.53	6.50	6.70	6.55	3270.00	3370.00	3321.67

Groundwater Monitoring Locations

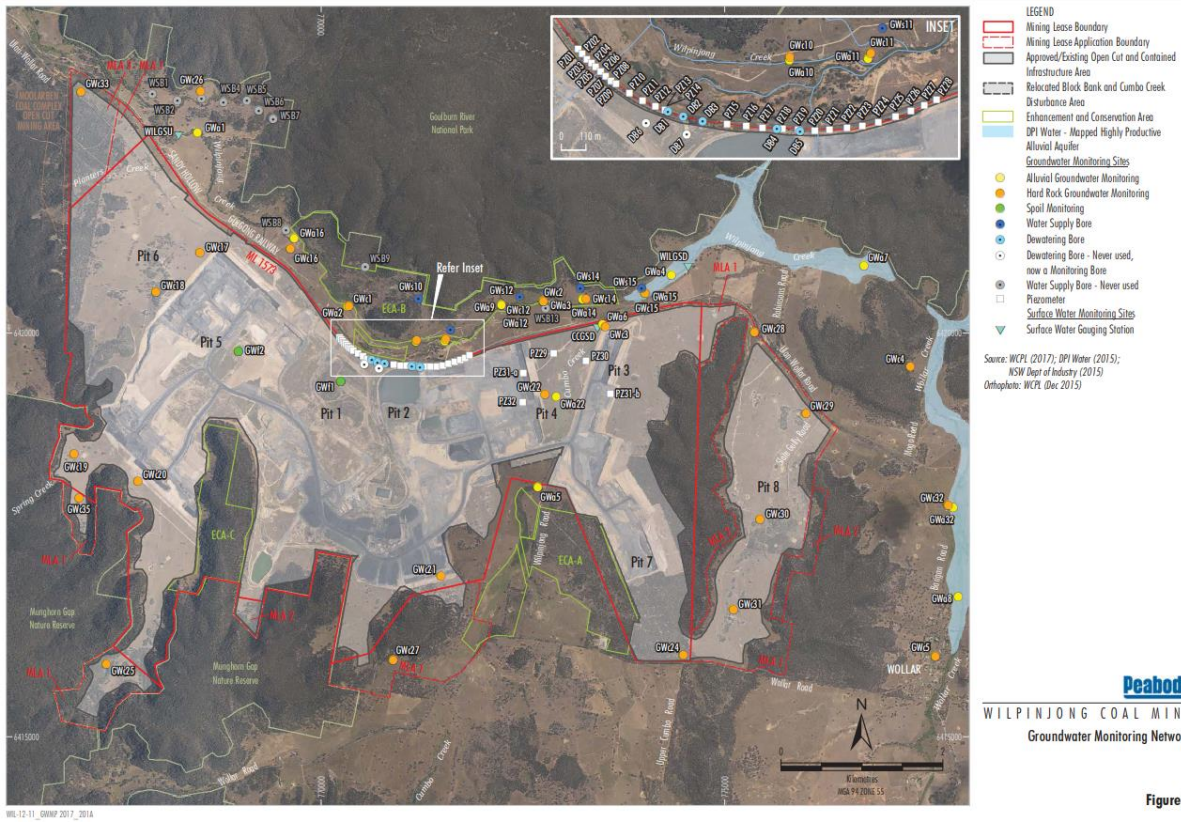


Figure 2

Sample Number	Sample Location	Sampling Date	Sampling Time	Aluminium mg/L	Arsenic mg/L	Barium mg/L	Bicarbonate Alkalinity as CaCO3 mg/L	Calcium - Dissolved mg/L	Carbonate Alkalinity as CaCO3 mg/L	Chloride mg/L	Copper mg/L	Depth to Standpipe m	Depth of Dry Bore to Standpipe m	Electrical Conductivity @ 25 °C µS/cm (Field)	Hydroxide Alkalinity as CaCO3 mg/L	Ionic Balance %	Iron mg/L	Lead mg/L	Magnesium - Dissolved mg/L	Manganese mg/L	Molybdenum mg/L	Nickel mg/L	No Sample	pH - pH Unit (Field)	Potassium - Dissolved mg/L	Selenium mg/L	Sodium - Dissolved mg/L	Strontium mg/L	Sulphate mg/L	Temperature °C	Temperature - Client Supplied °C	Total Alkalinity as CaCO3 mg/L	Total Anions meq/L	Total Cations meq/L	Total Dissolved Solids @180° C Dissolved mg/L	Turbidity NTU	Zinc mg/L		
ME1800038001	GWA1	05-Jan-2018	1124																																				
ME1800038002	GWA2	16-Jan-2018	1045	2.30	0.018	0.088	168	29	<1	334	0.004			1440	<1	1.55	20.5	0.003	41	1.76	<0.001	0.010		6.8	8	<0.01	205	0.357	77	19.0		168	14.4	13.9	783		0.008		
ME1800038003	GWA3	16-Jan-2018	1121																																				
ME1800038004	GWA4	16-Jan-2018	1139																																				
ME1800038005	GWA5	17-Jan-2018	1358	1.09	0.026	0.104	780	646	<1	2810	0.006			13100	<1	4.28	2.36	0.006	750	0.156	0.003	0.022		7.4	37	<0.01	1740	6.12	4370	20.5		780	186	170	10000		0.077		
ME1800038006	GWA6	16-Jan-2018	1200																																				
ME1800038007	GWA7	16-Jan-2018	1245	4.72	0.005	0.659	1130	476	<1	1840	0.014			10800	<1	0.18	21.4	0.017	556	4.33	0.003	0.044		7.1	34	<0.01	1490	7.61	2940	21.5		1130	136	135	8610		0.058		
ME1800038008	GWA8	05-Jan-2018	1420	2.40	0.002	0.146	250	120	<1	375	0.012			2400	<1	6.23	4.71	0.006	106	22.6	<0.001	0.019		7.0	10	<0.01	198	1.34	535	19.5		250	26.7	23.6	1460		0.024		
ME1800038009	GWC1	16-Jan-2018	1033	0.05	0.001	0.102	508	153	<1	612	0.007			3500	<1	1.24	3.80	<0.001	110	1.03	<0.001	0.005		7.0	26	<0.01	474	1.63	553	18.0		508	38.9	38.0	2100		0.009		
ME1800038010	GWC2	16-Jan-2018	1116	0.07	<0.001	0.343	509	69	<1	114	0.001			1260	<1	0.06	0.96	<0.001	30	0.089	<0.001	0.001		7.0	27	<0.01	163	0.634	14	19.5		509	13.7	13.7	670		0.007		
ME1800038011	GWC3	16-Jan-2018	1213	8.61	0.116	0.479	564	133	<1	632	0.068			4020	<1	0.07	634	0.026	122	0.364	0.008	0.035		6.8	36	0.02	618	1.81	742	20.0		564	44.5	44.5	2240		0.177		
ME1800038012	GWC4	16-Jan-2018	1344	0.29	0.001	0.131	638	181	<1	343	0.008			2450	<1	0.24	4.25	0.004	85	0.087	<0.001	0.003		6.7	51	<0.01	228	1.98	238	21.5		638	27.4	27.2	1460		0.041		
ME1800038013	GWC5	05-Jan-2018	1445	0.02	<0.001	0.222	2340	321	<1	533	0.003			5390	<1	6.30	0.22	0.002	182	1.66	<0.001	0.031		6.6	100	<0.01	1030	8.20	350	20.0		2340	69.1	78.4	3300		0.017		
ME1800038014	GWA10	23-Jan-2018	1013	1.95	0.014	0.062	513	122	<1	699	0.035			3400	<1	3.35	8.31	0.004	118	1.85	<0.001	0.009		6.9	1	<0.01	426	1.17	325	20.5		513	36.7	34.4	2100		0.020		
ME1800038015	GWC10	23-Jan-2018	1036	0.04	<0.001	0.048	360	213	<1	382	0.142			3700	<1	1.28	1.64	<0.001	131	0.670	<0.001	0.004		6.7	31	<0.01	483	2.12	1160	20.5		360	42.1	43.2	2580		0.008		
ME1800038016	GWA11	23-Jan-2018	1102	7.22	0.001	0.067	746	32	<1	132	0.256			2040	<1	1.35	7.30	0.007	31	0.427	0.002	0.019		7.6	15	<0.01	414	0.522	159	21.5		746	21.9	22.5	1110		0.051		
ME1800038017	GWC11	23-Jan-2018	1122	0.86	<0.001	0.070	388	112	<1	359	0.041			3370	<1	0.92	11.8	0.004	112	1.58	0.002	0.009		6.5	28	<0.01	486	1.09	870	21.0		388	36.0	36.7	1990		0.031		
ME1800038018	GWA12	23-Jan-2018	1144																																				
ME1800038019	GWC12	23-Jan-2018	1204	0.21	<0.001	0.608	548	41	<1	104	0.009			1400	<1	2.09	1.43	0.002	21	0.122	0.002	0.002		7.3	17	<0.01	256	0.458	40	22.0		548	14.7	15.3	984		0.009		
ME1800038020	GWA14	23-Jan-2018	1223																																				
ME1800038021	GWC14	23-Jan-2018	1242	0.06	<0.001	5.11	486	44	<1	70	0.015			1160	<1	2.39	0.83	0.003	20	0.041	<0.001	0.001		7.3	17	<0.01	184	0.720	1	22.5		486	11.7	12.3	706		0.008		
ME1800038022	GWA15	23-Jan-2018	1301																																				
ME1800038023	GWC15	23-Jan-2018	1337	0.04	<0.001	0.145	1010	78	<1	270	0.003			3260	<1	2.55	1.06	<0.001	48	0.098	<0.001	<0.001		6.6	31	<0.01	607	1.38	436	21.5		1010	36.9	35.0	1940		0.011		
ME1800038024	GWC25	12-Jan-2018	1033	0.19	0.003	0.049	401	14	<1	281	0.091			1550	<1	2.26	1.46	0.012	61	0.205	0.002	0.076		7.5	6	<0.01	239	0.311	52	21.5		401	17.0	16.3	778		0.010		
ME1800038025	GWC19	12-Jan-2018	1237	4.26	0.031	0.715	350	74	<1	382	0.025			1860	<1	4.49	54.8	0.032	76	0.509	<0.001	0.015		6.5	28	<0.01	172	0.494	100	22.5		350	19.8	18.1	1080		0.042		
ME1800038026	GWC35	12-Jan-2018	1218	0.39	0.002	0.225	234	27	<1	41	0.072			587	<1	7.77	2.79	0.004	20	0.181	<0.001	0.008		7.0	19	<0.01	45	0.276	25	24.0		234	6.35	5.44	314		0.010		
ME1800038027	GWC33	05-Jan-2018	1030	0.52	<0.001	0.339	<1	569	48	66	0.008			6950	1360	1.18	0.81	0.002	<1	0.028	<0.001	0.003		12.5	19	<0.01	46	0.351	6	22.5		1410	30.2	30.9	1790		0.036		
ME1800038028	GWC26	05-Jan-2018	1112	0.82	<0.001	0.620	563	31	<1	165	0.068			1480	<1	7.35	1.94	0.007	14	0.073	0.001	0.004		7.3	14	<0.01	256	0.523	26	20.5		563	16.4	14.2	796		0.075		
ME1800038029	GWC18	08-Jan-2018	1218																																				
ME1800038030	GWC17	12-Jan-2018	1128	0.65	0.001	0.111	500	91	<1	273	0.003			1940	<1	2.34	22.8	0.006	52	0.083	0.001	<0.001		6.9	29	<0.01	261	1.02	203	24.0		500	21.9	20.9	1030		0.013		
ME1800038031	GWC16	08-Jan-2018	1058	0.09	<0.001	0.185	632	58	<1	321	0.059			2160	<1	0.86	8.07	0.002	31	0.059	<0.001	0.001		7.1	22	<0.01	389	0.757	79	21.5		632	23.3	22.9	1120		0.017		
ME1800038032	GWC28	05-Jan-2018	1239	0.19	<0.001	0.206	850	151	<1	505	0.034			3300	<1	6.19	2.02	0.002	82	0.074	<0.001	0.006		6.7	34	<0.01	425	2.27	329	23.0		850	38.1	33.6	1770		0.025		
ME1800038033	GWC29	05-Jan-2018	1314	0.08	<0.001	0.132	698	137	<1	299	0.008			2360	<1	1.90	0.82	<0.001	96	0.050	0.002	0.004		6.8	34	<0.01	249	1.13	244	23.0		698	27.5	26.4	1210		0.013		
ME1800038034	GWC30	08-Jan-2018	1207	0.18	<0.001	0.208	594	202	<1	554	0.031			3050	<1	4.34	1.26	0.002	145	0.284	0.001	0.004		6.8	48	<0.01	183	2.37	314	22.5		594	34.0	31.2	1850		0.036		
ME1800038035	GWC31	08-Jan-2018	1433	69.9	0.460	1.45	717	413	<1	464	0.500			4190	<1	9.52	797	0.393	204	19.4	0.014	0.870		6.8	56	0.04	498	9.58	2200	26.5		717	73.2	60.5	3170		2.72		
ME1800038036	GWC24	04-Jan-2018	1309	0.09	0.003	0.044	<1	104	<1	568	0.007			3580	<1	1.54	85.4	0.002	162	8.39	<0.001	0.237		5.5	77	<0.01	432	0.829	1060	22.0		<1	38.1	39.3	2280		0.415		
ME1800038037	GWC27	04-Jan-2018	1349	0.65	0.002	0.068	<1	37	<1	353	0.050			1760	<1	5.83	2.77	0.008	36	4.24	<0.001	0.055		4.3	40	<0.01	284	0.224	299	20.5		<1	16.2	18.2	1050		0.517		
ME1800038038	GWC32	05-Jan-2018	1343	0.03	<0.001	0.057	1350	157	<1	328	0.174			3490	<1	3.29	0.45	<0.001	121	0.052	<0.001	0.001		6.6	48	<0.01	598	4.50	285	20.0		1350	42.2	45.0	2020		0.024		
ME1800038039	GWA32	05-Jan-2018	1402	0.02	<0.001	0.054	459	145	<1	559	0.012			3430	<1	4.33	0.36	<0.001	155	0.641	0.002	0.004		7.1	19	<0.01	357	2.08	688	19.5		459	39.3	36.0	2040		<0.005		
ME18000																																							

Sample Number	Sample Location	Sampling Date	Sampling Time	Aluminium mg/L	Arsenic mg/L	Barium mg/L	Bicarbonate Alkalinity as CaCO3 mg/L	Calcium - Dissolved mg/L	Carbonate Alkalinity as CaCO3 mg/L	Chloride mg/L	Copper mg/L	Depth to Standpipe m	Depth of Dry Bore to Standpipe m	Electrical Conductivity @ 25° C µS/cm (Field)	Hydroxide Alkalinity as CaCO3 mg/L	Ionic Balance %	Iron mg/L	Lead mg/L	Magnesium - Dissolved mg/L	Manganese mg/L	Molybdenum mg/L	Nickel mg/L	No Sample	pH - pH Unit (Field)	Potassium - Dissolved mg/L	Selenium mg/L	Sodium - Dissolved mg/L	Strontium mg/L	Sulphate mg/L	Temperature °C	Temperature - Client Supplied °C	Total Alkalinity as CaCO3 mg/L	Total Anions meq/L	Total Cations meq/L	Total Dissolved Solids @ 180° C - Dissolved mg/L	Turbidity NTU	Zinc mg/L			
ME1800131001	GWA1	05-Jan-2018	1124										4.950																											
ME1800131002	GWA2	16-Jan-2018	1039									3.960																												
ME1800131003	GWA3	16-Jan-2018	1121										5.500																											
ME1800131004	GWA4	16-Jan-2018	1139										4.930																											
ME1800131005	GWA5	17-Jan-2018	1350									4.010																												
ME1800131006	GWA6	16-Jan-2018	1200									2.860																												
ME1800131007	GWA7	16-Jan-2018	1245									4.610																												
ME1800131008	GWA8	05-Jan-2018	1420									2.010																												
ME1800131009	GWC1	16-Jan-2018	1025									10.590																												
ME1800131010	GWC2	16-Jan-2018	1107									14.500																												
ME1800131011	GWC3	16-Jan-2018	1205									13.800																												
ME1800131012	GWC4	16-Jan-2018	1334									14.980																												
ME1800131013	GWC5	05-Jan-2018	1435									5.630																												
ME1800131014	GWA10	23-Jan-2018	1002									4.390																												
ME1800131015	GWC10	23-Jan-2018	1027									5.010																												
ME1800131016	GWA11	23-Jan-2018	1049									3.870																												
ME1800131017	GWC11	23-Jan-2018	1111									15.290																												
ME1800131018	GWA12	23-Jan-2018	1137									5.270																												
ME1800131019	GWC12	23-Jan-2018	1151									32.020																												
ME1800131020	GWA14	23-Jan-2018	1223									5.010																												
ME1800131021	GWC14	23-Jan-2018	1229									26.980																												
ME1800131022	GWA15	23-Jan-2018	1301									3.490																												
ME1800131023	GWC15	23-Jan-2018	1321									22.600																												
ME1800131024	GWC25	12-Jan-2018	1024									27.940																												
ME1800131025	GWC19	12-Jan-2018	1228									31.060																												
ME1800131026	GWC35	12-Jan-2018	1205									42.060																												
ME1800131027	GWC33	05-Jan-2018	1004									39.390																												
ME1800131028	GWC26	05-Jan-2018	1053									39.550																												
ME1800131029	GWC18	04-Jan-2018	1032																																					
ME1800131030	GWC17	12-Jan-2018	1117									43.710																												
ME1800131031	GWC16	08-Jan-2018	1048									27.980																												
ME1800131032	GWC28	05-Jan-2018	1226									39.420																												
ME1800131033	GWC29	05-Jan-2018	1301									40.340																												
ME1800131034	GWC30	08-Jan-2018	1157									31.090																												
ME1800131035	GWC31	08-Jan-2018	1416									50.610																												
ME1800131036	GWC24	04-Jan-2018	1259									22.320																												
ME1800131037	GWC27	04-Jan-2018	1336									15.620																												
ME1800131038	GWC32	05-Jan-2018	1333									4.060																												
ME1800131039	GWA32	05-Jan-2018	1351									3.160																												
ME1800131040	GWA34	08-Jan-2018	1324									4.550																												
ME1800131041	GWC34	08-Jan-2018	1342									20.450																												
ME1800131042	GWA36	05-Jan-2018	1207									5.760																												
ME1800131043	GWC36	05-Jan-2018	1144									15.130																												
ME1800131044	GWA16	08-Jan-2018	1110									3.670																												
ME1800131045	PZ13	12-Jan-2018	1442									2.340																												
ME1800131046	PZ20	12-Jan-2018	1358									3.030																												
ME1800131047	PZ21	12-Jan-2018	1410									3.830																												
ME1800131048	PZ26	12-Jan-2018	1335									4.320																												
ME1800174001	GWA1	02-Feb-2018	0959																																					
ME1800174002	GWA2	02-Feb-2018	1037	2.40	0.021	0.067	174	28	<1	322	0.004			1420	<1	2.12	24.8	0.003	40	1.67	0.001	0.009		6.7	8	<0.01	200	0.263	78	19.0		174	14.2	13.6	748		0.008			

Sample Number	Sample Location	Sampling Date	Sampling Time	Aluminium mg/L	Arsenic mg/L	Barium mg/L	Bicarbonate Alkalinity as CaCO3 mg/L	Calcium - Dissolved mg/L	Carbonate Alkalinity as CaCO3 mg/L	Chloride mg/L	Copper mg/L	Depth to Standpipe m	Depth of Dry Bore to Standpipe m	Electrical Conductivity @ 25° C µS/cm (Field)	Hydroxide Alkalinity as CaCO3 mg/L	Ionic Balance %	Iron mg/L	Lead mg/L	Magnesium - Dissolved mg/L	Manganese mg/L	Molybdenum mg/L	Nickel mg/L	No Sample	pH - pH Unit (Field)	Potassium - Dissolved mg/L	Selenium mg/L	Sodium - Dissolved mg/L	Strontium mg/L	Sulphate mg/L	Temperature °C	Temperature - Client Supplied °C	Total Alkalinity as CaCO3 mg/L	Total Anions meq/L	Total Cations meq/L	Total Dissolved Solids @ 180° C - Dissolved mg/L	Turbidity NTU	Zinc mg/L			
ME1800174003	GWA3	02-Feb-2018	1107																																					
ME1800174004	GWA4	02-Feb-2018	1124																																					
ME1800174005	GWA5	14-Feb-2018	1444	1.86	0.027	0.371	742	659	<1	2370	0.008			12700	<1	3.52	3.14	0.006	833	0.133	0.007	0.027		7.4	33	<0.01	1820	7.37	4200	21.5			742	169	181	7570		0.089		
ME1800174006	GWA6	02-Feb-2018	1208																																					
ME1800174007	GWA7	02-Feb-2018	1234	1.80	0.003	0.182	1080	499	<1	1830	0.009			11000	<1	3.47	9.31	0.011	599	2.87	0.003	0.036		7.1	36	<0.01	1580	7.36	2930	20.0			1080	134	144	8720		0.025		
ME1800174008	GWA8	02-Feb-2018	1332	5.52	0.003	0.228	270	130	<1	375	0.018			2580	<1	1.41	11.6	0.013	111	29.4	0.001	0.029		6.9	12	<0.01	223	1.43	499	19.0			270	26.4	25.6	1620		0.041		
ME1800174009	GWC1	02-Feb-2018	1025	0.14	<0.001	0.094	500	149	<1	590	0.001			3630	<1	0.82	1.32	<0.001	100	0.960	<0.001	0.005		6.9	26	<0.01	459	1.60	493	18.0			500	36.9	36.3	2040		0.006		
ME1800174010	GWC2	02-Feb-2018	1102	0.12	<0.001	0.418	509	66	<1	108	0.004			1250	<1	0.98	1.02	<0.001	28	0.081	<0.001	0.002		7.0	26	<0.01	161	0.626	15	18.5			509	13.5	13.3	660		0.014		
ME1800174011	GWC3	02-Feb-2018	1152	49.6	0.030	3.20	561	128	<1	618	0.478			4080	<1	0.96	3300	0.274	112	2.07	0.001	0.307		6.7	34	0.16	599	6.24	628	18.5			561	41.7	42.5	2540		1.02		
ME1800174012	GWC4	02-Feb-2018	1308	0.68	0.001	0.211	644	176	<1	337	0.008			2580	<1	2.12	10.8	0.004	79	0.088	<0.001	0.004		6.6	50	<0.01	226	1.99	248	20.0			644	27.5	26.4	1390		0.048		
ME1800174013	GWC5	02-Feb-2018	1353	0.05	<0.001	0.227	2340	280	<1	499	0.002			5740	<1	0.54	0.61	0.001	159	1.73	<0.001	0.030		6.5	84	<0.01	895	7.98	316	18.0			2340	67.4	68.1	3560		0.016		
ME1800174014	GWA10	16-Feb-2018	1529	1.91	0.015	0.082	514	118	<1	628	0.037			3240	<1	3.85	8.44	0.005	115	1.90	<0.001	0.010		7.0	53	<0.01	352	1.16	317	21.0			514	34.6	32.0	1820		0.011		
ME1800174015	GWAC10	16-Feb-2018	1545	0.07	<0.001	0.055	365	228	<1	370	0.138			3630	<1	1.58	1.41	0.001	127	0.886	<0.001	0.005		6.9	33	<0.01	512	2.42	1240	20.0			365	43.5	44.9	2590		0.012		
ME1800174016	GWA11	16-Feb-2018	1450																																					
ME1800174017	GWC11	16-Feb-2018	1511	2.44	<0.001	0.246	376	111	<1	325	0.078			3300	<1	1.05	16.1	0.010	110	1.56	0.001	0.013		6.6	27	<0.01	465	1.12	869	20.0			376	34.8	35.5	2210		0.204		
ME1800174018	GWA12	16-Feb-2018	1353																																					
ME1800174019	GWC12	16-Feb-2018	1416	6.16	<0.001	6.71	538	33	<1	83	0.022			1300	<1	2.42	7.69	0.008	14	0.130	0.002	0.019		7.3	16	<0.01	228	0.728	33	22.5			538	13.8	13.1	744		0.030		
ME1800174020	GWA14	16-Feb-2018	1315																																					
ME1800174021	GWC14	16-Feb-2018	1337	0.07	<0.001	7.52	491	40	<1	70	0.015			1090	<1	3.91	0.64	0.004	16	0.029	<0.001	0.002		7.3	15	<0.01	166	0.797	1	21.0			491	11.8	10.9	599		0.012		
ME1800174022	GWA15	16-Feb-2018	1237																																					
ME1800174023	GWC15	16-Feb-2018	1303	0.11	<0.001	0.239	1000	71	<1	242	0.006			3150	<1	1.86	1.60	0.001	43	0.094	<0.001	0.002		6.6	30	<0.01	607	1.42	420	20.0			1000	35.6	34.2	1950		0.015		
ME1800174024	GWC25	12-Feb-2018	1222	0.32	0.004	0.094	443	34	<1	262	0.176			1700	<1	2.41	2.33	0.019	77	1.44	0.002	0.129		7.0	7	<0.01	229	0.603	136	21.5			443	19.1	18.2	883		0.028		
ME1800174025	GWC19	12-Feb-2018	1046	0.26	0.003	0.230	399	96	<1	358	0.006			1930	<1	0.03	6.32	0.004	83	0.568	<0.001	0.005		6.5	27	<0.01	193	0.453	126	21.5			399	20.7	20.7	1010		0.011		
ME1800174026	GWC35	12-Feb-2018	1126	0.10	<0.001	0.190	219	37	<1	41	0.041			562	<1	1.10	0.63	0.002	22	0.058	<0.001	0.005		7.0	19	<0.01	47	0.256	25	23.0			219	6.05	6.19	326		0.007		
ME1800174027	GWC33	06-Feb-2018	1103	0.80	<0.001	0.309	<1	520	39	48	0.004			6760	1360	1.74	0.51	0.001	<1	0.023	<0.001	0.002		12.4	18	<0.01	45	0.316	2	22.5			1400	29.4	28.4	1580		0.020		
ME1800174028	GWC26	06-Feb-2018	1140	0.70	<0.001	0.415	553	32	<1	141	0.065			1460	<1	0.38	2.14	0.006	16	0.072	0.002	0.003		7.3	18	<0.01	285	0.481	30	21.0			553	15.6	15.8	784		0.079		
ME1800174029	GWC18	05-Feb-2018	0841																																					
ME1800174030	GWC17	12-Feb-2018	1517	0.20	<0.001	0.099	517	142	<1	267	0.002			2100	<1	0.32	11.7	0.003	66	0.070	0.001	<0.001		7.0	29	<0.01	253	1.19	315	23.5			517	24.4	24.3	1290		0.009		
ME1800174031	GWC16	06-Feb-2018	1217	0.03	<0.001	0.171	632	74	<1	327	0.014			2370	<1	1.05	5.88	<0.001	37	0.038	<0.001	<0.001		7.1	22	<0.01	370	0.778	98	21.0			632	23.9	23.4	1190		0.007		
ME1800174032	GWC28	06-Feb-2018	1337	0.12	<0.001	0.115	865	126	<1	457	0.217			3480	<1	7.84	1.61	0.002	71	0.073	<0.001	0.010		6.7	32	<0.01	440	2.22	354	21.5			865	37.5	32.1	1870		0.034		
ME1800174033	GWC29	06-Feb-2018	1412	0.27	<0.001	0.229	587	126	<1	281	0.024			2280	<1	0.46	0.87	0.003	71	0.060	0.005	0.011		7.0	35	<0.01	258	1.02	210	22.5			587	24.0	24.2	1230		0.034		
ME1800174034	GWC30	13-Feb-2018	1214	0.05	<0.001	0.081	633	255	<1	524	0.007			2990	<1	4.76	2.10	<0.001	171	0.161	<0.001	0.002		6.7	50	<0.01	195	2.35	279	21.5			633	33.2	36.6	2030		0.013		
ME1800174035	GWC31	15-Feb-2018	1245																																					
ME1800174036	GWC24	15-Feb-2018	1322	0.17	0.003	0.035	20	107	<1	547	0.012			3570	<1	3.24	93.2	0.004	163	8.88	<0.001	0.236		5.6	61	<0.01	363	0.830	1090	21.5			20	38.5	36.1	1610		0.406		
ME1800174037	GWC27	15-Feb-2018	1429	0.52	0.015	0.082	40	33	<1	335	7.70			1760	<1	5.64	31.4	0.032	45	4.40	<0.001	0.100		5.7	33	<0.01	195	0.172	297	19.5			40	16.4	14.7	1110		0.253		
ME1800174038	GWC32	06-Feb-2018	1437	0.01	<0.001	0.045	1360	132	<1	310	0.033			3650	<1	8.09	1.54	<0.001	92	0.056	<0.001	<0.001		6.5	38	<0.01	476	4.52	299	19.5			1360	42.1	35.8	2010		0.014		
ME1800174039	GWA32	06-Feb-2018	1454	<0.01	<0.001	0.054	451	125	<1	526	0.011			3590	<1	8.57	0.14	<0.001	138	0.629	0.002	0.003		7.1	17	<0.01	327	2.03	694	20.0			451	38.3	32.2	2130		0.009		
ME1800174040	GWA34	13-Feb-2018	1420	21.0	0.002	0.018	<1	499	<1	339	0.221			5970	<1	2.15	131	0.003	547	16.7	<0.001	0.990		4.3	6	0.02	420	0.782	3970	21.0			<1	92.2	88.3	6170		2.80		
ME1800174041	GWC34	13-Feb-2018	1433	2.33	0.004	0.156	1720	91	<1	224	0.492			4520	<1	0.55	6.72	0.017	68	0.234	0.008	0.224		7.0	21	0.01	933	6.20	535	21.5			1720</							

Sample Number	Sample Location	Sampling Date	Sampling Time	Aluminium mg/L	Arsenic mg/L	Barium mg/L	Bicarbonate Alkalinity as CaCO3 mg/L	Calcium - Dissolved mg/L	Carbonate Alkalinity as CaCO3 mg/L	Chloride mg/L	Copper mg/L	Depth to Standpipe m	Depth of Dry Bore to Standpipe m	Electrical Conductivity @ 25° C µS/cm (Field)	Hydroxide Alkalinity as CaCO3 mg/L	Ionic Balance %	Iron mg/L	Lead mg/L	Magnesium - Dissolved mg/L	Manganese mg/L	Molybdenum mg/L	Nickel mg/L	No Sample	pH - pH Unit (Field)	Potassium - Dissolved mg/L	Selenium mg/L	Sodium - Dissolved mg/L	Strontium mg/L	Sulphate mg/L	Temperature °C	Temperature - Client Supplied °C	Total Alkalinity as CaCO3 mg/L	Total Anions meq/L	Total Cations meq/L	Total Dissolved Solids @ 180° C - Dissolved mg/L	Turbidity NTU	Zinc mg/L			
ME1800243005	GWA5	14-Feb-2018	1435									3.865																												
ME1800243006	GWA6	02-Feb-2018	1208										2.900																											
ME1800243007	GWA7	02-Feb-2018	1224									4.800																												
ME1800243008	GWA8	02-Feb-2018	1326									2.340																												
ME1800243009	GWC1	02-Feb-2018	1018									10.720																												
ME1800243010	GWC2	02-Feb-2018	1054									14.610																												
ME1800243011	GWC3	02-Feb-2018	1142									14.720																												
ME1800243012	GWC4	02-Feb-2018	1300									15.000																												
ME1800243013	GWC5	02-Feb-2018	1346									5.810																												
ME1800243014	GWA10	16-Feb-2018	1522									4.480																												
ME1800243015	GWC10	16-Feb-2018	1539									5.140																												
ME1800243016	GWA11	16-Feb-2018	1441										4.135																											
ME1800243017	GWC11	16-Feb-2018	1502									15.760																												
ME1800243018	GWA12	16-Feb-2018	1355										5.325																											
ME1800243019	GWC12	16-Feb-2018	1404									33.210																												
ME1800243020	GWA14	16-Feb-2018	1315										4.960																											
ME1800243021	GWC14	16-Feb-2018	1328									29.450																												
ME1800243022	GWA15	16-Feb-2018	1237										3.520																											
ME1800243023	GWC15	16-Feb-2018	1251									24.690																												
ME1800243024	GWC25	12-Feb-2018	1209									28.060																												
ME1800243025	GWC19	12-Feb-2018	1046									35.470																												
ME1800243026	GWC35	12-Feb-2018	1118									42.260																												
ME1800243027	GWC33	06-Feb-2018	1048									39.820																												
ME1800243028	GWC26	06-Feb-2018	1127									39.960																												
ME1800243029	GWC18	19-Feb-2018	0944																																					
ME1800243030	GWC17	12-Feb-2018	1502									43.810																												
ME1800243031	GWC16	06-Feb-2018	1205									27.540																												
ME1800243032	GWC28	06-Feb-2018	1321									39.160																												
ME1800243033	GWC29	06-Feb-2018	1354									39.910																												
ME1800243034	GWC30	13-Feb-2018	1204									31.340																												
ME1800243035	GWC31	15-Feb-2018	1227										50.860																											
ME1800243036	GWC24	15-Feb-2018	1311									22.230																												
ME1800243037	GWC27	15-Feb-2018	1410									15.650																												
ME1800243038	GWC32	06-Feb-2018	1428									4.270																												
ME1800243039	GWA32	06-Feb-2018	1445									2.710																												
ME1800243040	GWA34	13-Feb-2018	1359									4.520																												
ME1800243041	GWC34	13-Feb-2018	1405									20.340																												
ME1800243042	GWA36	06-Feb-2018	1302										5.810																											
ME1800243043	GWC36	06-Feb-2018	1244									15.630																												
ME1800243044	GWA16	06-Feb-2018	1228										3.830																											
ME1800243045	PZ13	02-Feb-2018	0946										2.330																											
ME1800243046	PZ20	12-Feb-2018	1354									3.580																												
ME1800243047	PZ21	12-Feb-2018	1413									4.000																												
ME1800243048	PZ26	12-Feb-2018	1332										4.290																											
ME1800318001	GWA1	02-Mar-2018	1123																																					
ME1800318002	GWA2	02-Mar-2018	1144	0.06	<0.001	0.011	182	27	<1	300	<0.001			1400	<1	0.88	<0.05	<0.001	39	0.002	<0.001	0.001		6.8	8	<0.01	201	0.200	79	20.5		182	13.7	13.5	764		<0.005			
ME1800318003	GWA3	02-Mar-2018	1239																																					
ME1800318004	GWA4	02-Mar-2018	1212																																					
ME1800318005	GWA5	12-Mar-2018	1435																																					
ME1800318006	GWA6	02-Mar-2018	1328																																					

Sample Number	Sample Location	Sampling Date	Sampling Time	Aluminium mg/L	Arsenic mg/L	Barium mg/L	Bicarbonate Alkalinity as CaCO3 mg/L	Calcium - Dissolved mg/L	Carbonate Alkalinity as CaCO3 mg/L	Chloride mg/L	Copper mg/L	Depth to Standpipe m	Depth of Dry Bore to Standpipe m	Electrical Conductivity @ 25 °C µS/cm (Field)	Hydroxide Alkalinity as CaCO3 mg/L	Ionic Balance %	Iron mg/L	Lead mg/L	Magnesium - Dissolved mg/L	Manganese mg/L	Molybdenum mg/L	Nickel mg/L	No Sample	pH - pH Unit (Field)	Potassium - Dissolved mg/L	Selenium mg/L	Sodium - Dissolved mg/L	Strontium mg/L	Sulphate mg/L	Temperature °C	Temperature - Client Supplied °C	Total Alkalinity as CaCO3 mg/L	Total Anions meq/L	Total Cations meq/L	Total Dissolved Solids @ 180°C Dissolved mg/L	Turbidity NTU	Zinc mg/L			
ME1800318007	GWA7	02-Mar-2018	1349																																					
ME1800318008	GWA8	02-Mar-2018	1450	10.8	0.005	0.284	257	107	<1	329	0.032			2200	<1	0.07	19.5	0.023	100	25.8	0.001	0.047		7.0	12	<0.01	218	1.16	428	22.0		257	23.3	23.4	1570		0.072			
ME1800318009	GWC1	02-Mar-2018	1156	0.04	0.002	0.084	534	145	<1	552	0.003			3410	<1	1.69	3.95	<0.001	103	0.950	<0.001	0.007		7.1	28	<0.01	478	1.52	468	18.0		534	36.0	37.2	2220		0.009			
ME1800318010	GWC2	02-Mar-2018	1235	1.65	<0.001	0.518	547	69	<1	105	0.007			1270	<1	2.35	2.29	0.002	29	0.072	<0.001	0.005		7.1	27	<0.01	163	0.630	18	20.5		547	14.3	13.6	742		0.023			
ME1800318011	GWC3	02-Mar-2018	1314	11.2	0.075	0.292	586	130	<1	583	0.132			3840	<1	4.04	487	0.049	116	0.788	0.002	0.060		6.8	39	0.08	630	2.69	616	20.0		586	41.0	44.4	3710		0.159			
ME1800318012	GWC4	02-Mar-2018	1421	0.24	<0.001	0.096	664	171	<1	310	0.006			2390	<1	2.54	6.09	0.002	79	0.052	<0.001	0.002		6.6	51	<0.01	220	2.21	252	21.0		664	27.2	25.9	1490		0.024			
ME1800318013	GWC5	02-Mar-2018	1508	0.04	<0.001	0.212	2430	269	<1	507	0.015			5340	<1	3.81	0.80	0.003	146	1.55	<0.001	0.030		6.6	85	<0.01	846	8.78	320	19.0		2430	69.5	64.4	3680		0.028			
ME1800318014	GWA10	19-Mar-2018	1132	1.28	0.013	0.058	513	124	<1	690	0.016			3290	<1	1.12	6.63	0.003	124	1.68	<0.001	0.007		7.0	2	<0.01	451	1.02	344	21.5		513	36.9	36.1	2050		0.015			
ME1800318015	GWC10	19-Mar-2018	1153	0.12	<0.001	0.053	376	211	<1	412	0.109			3660	<1	7.05	5.05	<0.001	128	0.836	0.002	0.030		6.9	32	<0.01	494	1.94	1480	21.0		376	49.9	43.4	2490		0.027			
ME1800318016	GWA11	19-Mar-2018	1211																																					
ME1800318017	GWC11	19-Mar-2018	1232	2.45	<0.001	0.037	316	144	<1	343	0.017			3490	<1	1.92	13.5	0.010	145	1.70	<0.001	0.012		6.5	33	<0.01	489	1.24	1290	20.5		316	42.8	41.2	2240		0.188			
ME1800318018	GWA12	19-Mar-2018	1300																																					
ME1800318019	GWC12	19-Mar-2018	1335	4.96	<0.001	9.16	542	37	<1	103	0.026			1300	<1	0.58	6.10	0.006	16	0.093	<0.001	0.014		7.6	16	<0.01	248	0.754	38	23.5		542	14.5	14.4	735		0.023			
ME1800318020	GWA14	19-Mar-2018	1352																																					
ME1800318021	GWC14	19-Mar-2018	1408	0.11	<0.001	10.6	476	43	<1	79	0.009			1080	<1	0.29	0.95	0.017	18	0.030	<0.001	0.001		7.4	16	<0.01	176	0.953	1	21.0		476	11.8	11.7	631		0.020			
ME1800318022	GWA15	19-Mar-2018	1429																																					
ME1800318023	GWC15	19-Mar-2018	1446	0.11	<0.001	0.218	1050	74	<1	279	0.022			3110	<1	2.27	2.87	0.003	49	0.084	<0.001	0.002		6.7	32	<0.01	650	1.33	465	20.5		1050	38.5	36.8	2080		0.011			
ME1800318024	GWC25	13-Mar-2018	1146	0.15	0.002	0.037	446	21	<1	305	0.038			1600	<1	8.71	0.62	0.006	70	0.096	0.004	0.084		7.4	6	<0.01	205	0.317	67	21.5		446	18.9	15.9	898		0.009			
ME1800318025	GWC19	13-Mar-2018	1250																																					
ME1800318026	GWC35	13-Mar-2018	1235	0.66	0.002	0.189	208	31	<1	44	0.054			590	<1	5.89	3.34	0.005	19	0.168	0.008	0.045		6.9	15	<0.01	41	0.233	26	22.0		208	5.94	5.28	298		0.017			
ME1800318027	GWC33	20-Mar-2018	1449	0.61	<0.001	0.262	<1	531	35	50	0.002			6190	1360	0.38	0.13	<0.001	<1	0.006	<0.001	0.001		12.5	18	<0.01	47	0.272	2	22.5		1390	29.2	29.0	1580		0.012			
ME1800318028	GWC26	20-Mar-2018	1403	0.06	<0.001	0.234	509	42	<1	158	0.004			1350	<1	4.85	1.04	<0.001	18	0.048	0.002	0.005		7.3	15	<0.01	228	0.398	32	20.5		509	15.3	13.9	799		0.016			
ME1800318029	GWC18	05-Mar-2018	0937																																					
ME1800318030	GWC17	13-Mar-2018	1357	0.20	<0.001	0.071	545	141	<1	270	0.003			2600	<1	8.13	5.77	0.002	71	0.080	0.002	0.001		6.9	26	<0.01	253	1.51	499	22.5		545	28.9	24.5	1460		0.009			
ME1800318031	GWC16	20-Mar-2018	1302	0.09	<0.001	0.138	606	79	<1	415	0.003			2290	<1	6.08	2.53	0.001	40	0.037	<0.001	<0.001		7.2	20	<0.01	349	0.766	100	21.0		606	25.9	22.9	1230		0.019			
ME1800318032	GWC28	15-Mar-2018	1235	0.08	<0.001	0.091	850	142	<1	506	0.026			3300	<1	6.35	1.34	<0.001	80	0.064	0.010	0.067		6.8	36	<0.01	428	1.93	310	22.5		850	37.7	33.2	2020		0.035			
ME1800318033	GWC29	15-Mar-2018	1309	0.07	<0.001	0.138	684	122	<1	296	0.009			2250	<1	4.37	1.33	<0.001	83	0.073	0.022	0.113		7.0	33	<0.01	243	0.991	218	22.5		684	26.6	24.3	1360		0.043			
ME1800318034	GWC30	15-Mar-2018	1352	0.02	<0.001	0.060	621	221	<1	580	0.007			2930	<1	4.63	2.15	<0.001	146	0.157	0.008	0.077		6.8	46	<0.01	176	2.38	298	21.0		621	35.0	31.9	1940		0.061			
ME1800318035	GWC31	06-Mar-2018	1336																																					
ME1800318036	GWC24	06-Mar-2018	1431	0.46	0.002	0.049	34	110	<1	595	0.048			3580	<1	6.32	92.9	0.004	163	8.75	<0.001	0.234		5.9	71	<0.01	413	0.814	1270	20.5		34	43.9	38.7	2680		0.395			
ME1800318037	GWC27	06-Mar-2018	1515	3.19	0.038	0.134	4	34	<1	377	1.23			1740	<1	2.34	20.5	0.038	41	4.30	0.001	0.070		5.1	35	<0.01	266	0.182	368	18.5		4	18.4	17.5	1100		0.598			
ME1800318038	GWC32	06-Mar-2018	1210	0.02	<0.001	0.051	1460	138	<1	345	0.031			3450	<1	5.60	3.24	<0.001	104	0.076	0.002	0.013		6.7	42	<0.01	557	5.12	321	18.5		1460	45.6	40.7	2170		0.021			
ME1800318039	GWA32	06-Mar-2018	1151	0.06	<0.001	0.045	461	143	<1	569	0.006			3290	<1	2.97	0.14	<0.001	160	0.314	0.002	0.002		7.2	25	<0.01	431	2.31	583	20.5		461	37.4	39.7	2260		0.006			
ME1800318040	GWA34	06-Mar-2018	1256	25.7	0.004	0.049	<1	487	<1	360	0.214			6030	<1	4.57	123	0.008	518	14.9	<0.001	0.995		4.7	7	0.02	474	0.896	4130	19.5		<1	96.1	87.7	6780		2.80			
ME1800318041	GWC34	06-Mar-2018	1311																																					
ME1800318042	GWA36	20-Mar-2018	1158																																					
ME1800318043	GWC36	20-Mar-2018	1218	3.51	0.003	0.246	222	169	<1	340	0.017			3770	<1	2.64	26.8	0.010	184	2.15	0.002	0.023		6.4	36	<0.01	451	1.32	1560	20.5		222	46.5	44.1	2530		0.088			
ME1800318044	GWA16	20-Mar-2018	1242																																					
ME1800318045	PZ13	13-Mar-2018	1324																																					
ME1800318046	PZ20	13-Mar-2018	1033	3.87	0.003	0.059	321	40	<1	79	0.016			1240	<1	3.31	4.54	0.008	39	0.788	0.002	0.010		7.4	18	<0.01	152	0.484	215	22.5		321	13.1	12.3	784		0.036			
ME1800318047	PZ21	13-Mar-2018	1045	1.59	0.001	0.029	384	22	<1	45	0.005			1050	<1	5.08</																								

Sample Number	Sample Location	Sampling Date	Sampling Time	Aluminium mg/L	Arsenic mg/L	Barium mg/L	Bicarbonate Alkalinity as CaCO3 mg/L	Calcium - Dissolved mg/L	Carbonate Alkalinity as CaCO3 mg/L	Chloride mg/L	Copper mg/L	Depth to Standpipe m	Depth of Dry Bore to Standpipe m	Electrical Conductivity @ 25° C µS/cm (Field)	Hydroxide Alkalinity as CaCO3 mg/L	Ionic Balance %	Iron mg/L	Lead mg/L	Magnesium - Dissolved mg/L	Manganese mg/L	Molybdenum mg/L	Nickel mg/L	No Sample	pH - pH Unit (Field)	Potassium - Dissolved mg/L	Selenium mg/L	Sodium - Dissolved mg/L	Strontium mg/L	Sulphate mg/L	Temperature °C	Temperature - Client Supplied °C	Total Alkalinity as CaCO3 mg/L	Total Anions meq/L	Total Cations meq/L	Total Dissolved Solids @ 180° C - Dissolved mg/L	Turbidity NTU	Zinc mg/L		
ME1800389009	GWC15	27-Feb-2018	1300									25.800																											
ME1800389010	GWC25	28-Feb-2018	1124									28.295																											
ME1800389011	GWC35	28-Feb-2018	1033									42.470																											
ME1800389012	GWC33	23-Feb-2018	0919									40.050																											
ME1800389013	GWC26	23-Feb-2018	0949									40.050																											
ME1800389014	GWC17	23-Feb-2018	1029									43.790																											
ME1800389015	GWC16	23-Feb-2018	1049									27.315																											
ME1800389016	GWA16	23-Feb-2018	1110									3.950																											
ME1800389017	GWC28	22-Feb-2018	1046									39.710																											
ME1800389018	GWC29	22-Feb-2018	1124									40.220																											
ME1800389019	GWC30	22-Feb-2018	1153									31.485																											
ME1800389020	GWC31	22-Feb-2018	1228									51.230																											
ME1800389021	GWC24	22-Feb-2018	1309									22.230																											
ME1800389022	GWC27	22-Feb-2018	1405									15.730																											
ME1800389023	GWC32	23-Feb-2018	1309									4.315																											
ME1800389024	GWA32	23-Feb-2018	1250									2.730																											
ME1800389025	GWA34	23-Feb-2018	1338									4.535																											
ME1800389026	GWC34	23-Feb-2018	1358									20.700																											
ME1800389027	GWA36	23-Feb-2018	1130									5.840																											
ME1800389028	GWC36	23-Feb-2018	1134									15.785																											
ME1800416001	GWA1	02-Mar-2018	1123										1.950																										
ME1800416002	GWA2	02-Mar-2018	1135									4.200																											
ME1800416003	GWA3	02-Mar-2018	1239										5.610																										
ME1800416004	GWA4	02-Mar-2018	1212										4.920																										
ME1800416005	GWA5	12-Mar-2018	1435										3.915																										
ME1800416006	GWA6	02-Mar-2018	1328										2.880																										
ME1800416007	GWA7	02-Mar-2018	1346										4.900																										
ME1800416008	GWA8	02-Mar-2018	1435										1.790																										
ME1800416009	GWC1	02-Mar-2018	1147										10.710																										
ME1800416010	GWC2	02-Mar-2018	1227										15.270																										
ME1800416011	GWC3	02-Mar-2018	1259										14.815																										
ME1800416012	GWC4	02-Mar-2018	1407										14.980																										
ME1800416013	GWC5	02-Mar-2018	1500										5.890																										
ME1800416014	Barologger	20-Mar-2018	1131																																				
ME1800416015	GWA10	19-Mar-2018	1126										4.550																										
ME1800416016	GWC10	19-Mar-2018	1146										5.020																										
ME1800416017	GWA11	19-Mar-2018	1202										4.315																										
ME1800416018	GWC11	19-Mar-2018	1220										16.015																										
ME1800416019	GWA12	19-Mar-2018	1300										5.470																										
ME1800416020	GWC12	19-Mar-2018	1317										34.790																										
ME1800416021	GWA14	19-Mar-2018	1352										4.960																										
ME1800416022	GWC14	19-Mar-2018	1359										31.560																										
ME1800416023	GWA15	19-Mar-2018	1429										3.600																										
ME1800416024	GWC15	19-Mar-2018	1435										26.710																										
ME1800416025	GWC25	13-Mar-2018	1126										28.400																										
ME1800416026	GWC19	13-Mar-2018	1246										37.430																										
ME1800416027	GWC35	13-Mar-2018	1223										42.590																										
ME1800416028	GWC33	20-Mar-2018	1431										39.725																										
ME1800416029	GWC26	20-Mar-2018	1353										39.690																										
ME1800416030	GWC17	13-Mar-2018	1342										42.780																										

Sample Number	Sample Location	Sampling Date	Sampling Time	Aluminium mg/L	Arsenic mg/L	Barium mg/L	Bicarbonate Alkalinity as CaCO3 mg/L	Calcium - Dissolved mg/L	Carbonate Alkalinity as CaCO3 mg/L	Chloride mg/L	Copper mg/L	Depth to Standpipe m	Depth of Dry Bore to Standpipe m	Electrical Conductivity @ 25° C µS/cm (Field)	Hydroxide Alkalinity as CaCO3 mg/L	Ionic Balance %	Iron mg/L	Lead mg/L	Magnesium - Dissolved mg/L	Manganese mg/L	Molybdenum mg/L	Nickel mg/L	No Sample	pH - pH Unit (Field)	Potassium - Dissolved mg/L	Selenium mg/L	Sodium - Dissolved mg/L	Strontium mg/L	Sulphate mg/L	Temperature °C	Temperature - Client Supplied °C	Total Alkalinity as CaCO3 mg/L	Total Anions meq/L	Total Cations meq/L	Total Dissolved Solids @ 180° C - Dissolved mg/L	Turbidity NTU	Zinc mg/L		
ME1800416031	GWC16	20-Mar-2018	1252									25.610																											
ME1800416032	GWA16	20-Mar-2018	1242										3.975																										
ME1800416033	GWC28	15-Mar-2018	1222									40.615																											
ME1800416034	GWC29	15-Mar-2018	1255									40.940																											
ME1800416035	GWC30	15-Mar-2018	1339									31.600																											
ME1800416036	GWC31	06-Mar-2018	1332										51.150																										
ME1800416037	GWC24	06-Mar-2018	1415									22.295																											
ME1800416038	GWC27	06-Mar-2018	1455									15.745																											
ME1800416039	GWC32	06-Mar-2018	1203									4.230																											
ME1800416040	GWA32	06-Mar-2018	1138									2.205																											
ME1800416041	GWA34	06-Mar-2018	1237									4.530																											
ME1800416042	GWC34	06-Mar-2018	1307										20.600																										
ME1800416043	GWA36	20-Mar-2018	1158										5.860																										
ME1800416044	GWC36	20-Mar-2018	1205									15.835																											
ME1800416045	PZ13	13-Mar-2018	1324										2.310																										
ME1800416046	PZ20	13-Mar-2018	1033									3.240																											
ME1800416047	PZ21	13-Mar-2018	1045									3.940																											
ME1800416048	PZ26	13-Mar-2018	1101										4.340																										
ME1800498001	GWA1	11-Apr-2018	1205																																				
ME1800498002	GWA2	23-Apr-2018	1208	13.3	0.119	0.275	176	27	<1	319	0.030			1400	<1	4.56	181	0.022	38	4.13	0.001	0.036		6.8	8	<0.01	190	0.406	80	20.5		176	14.2	12.9	897		0.049		
ME1800498003	GWA3	23-Apr-2018	1237																																				
ME1800498004	GWA4	13-Apr-2018	1444																																				
ME1800498005	GWA5	09-Apr-2018	1405																																				
ME1800498006	GWA6	23-Apr-2018	1330																																				
ME1800498007	GWA7	23-Apr-2018	1351																																				
ME1800498008	GWA8	23-Apr-2018	1437	3.45	<0.001	0.077	247	107	<1	336	0.009			2100	<1	5.12	1.03	0.003	91	15.5	<0.001	0.013		7.0	12	<0.01	198	1.04	465	20.5		247	24.1	21.7	1390		0.015		
ME1800498009	GWC1	23-Apr-2018	1221	0.11	0.003	0.090	549	155	<1	602	0.002			3490	<1	2.73	4.93	<0.001	102	0.850	<0.001	0.005		7.1	26	<0.01	473	1.60	553	18.0		549	39.5	37.4	1890		0.010		
ME1800498010	GWC2	23-Apr-2018	1246	0.42	<0.001	0.371	566	67	<1	106	0.003			1250	<1	6.08	1.40	<0.001	28	0.060	<0.001	0.002		7.1	25	<0.01	155	0.582	20	20.0		566	14.7	13.0	620		0.008		
ME1800498011	GWC3	23-Apr-2018	1319	8.63	0.208	0.195	581	143	<1	655	0.045			4070	<1	3.13	452	0.045	124	0.554	0.006	0.033		6.8	35	0.02	604	1.61	831	20.0		581	47.4	44.5	2120		0.098		
ME1800498012	GWC4	23-Apr-2018	1418	0.21	0.001	0.078	637	151	<1	336	0.004			2350	<1	6.60	6.50	0.002	76	0.050	<0.001	0.002		6.6	47	<0.01	210	1.91	256	20.0		637	27.5	24.1	1170		0.019		
ME1800498013	GWC5	23-Apr-2018	1456	0.05	<0.001	0.212	2420	232	<1	519	0.003			5340	<1	4.89	0.52	0.002	146	1.51	<0.001	0.027		6.7	80	<0.01	872	7.84	342	19.0		2420	70.1	63.6	3510		0.029		
ME1800498014	GWA10	13-Apr-2018	1120	4.81	0.014	0.084	543	121	<1	677	0.022			334	<1	4.13	10.3	0.004	122	2.08	0.001	0.012		7.0	2	<0.01	546	1.25	325	21.0		543	36.7	39.9	1490		0.018		
ME1800498015	GWC10	13-Apr-2018	1139	0.12	<0.001	0.052	408	210	<1	423	0.060			3690	<1	3.16	3.55	<0.001	128	0.577	0.003	0.018		6.9	32	<0.01	612	2.18	1220	21.0		408	45.5	48.4	2330		0.011		
ME1800498016	GWA11	13-Apr-2018	1150																																				
ME1800498017	GWC11	13-Apr-2018	1215	1.78	<0.001	0.066	356	138	<1	327	0.016			3480	<1	2.27	18.0	0.005	142	1.88	0.001	0.013		6.5	31	<0.01	599	1.31	1300	19.5		356	43.4	45.4	1540		0.114		
ME1800498018	GWA12	13-Apr-2018	1233																																				
ME1800498019	GWC12	13-Apr-2018	1302	1.52	<0.001	1.57	726	44	<1	136	0.005			1660	<1	6.47	2.18	0.002	19	0.086	<0.001	0.004		7.5	20	<0.01	402	0.567	37	22.0		726	19.1	21.8	647		0.010		
ME1800498020	GWA14	13-Apr-2018	1326																																				
ME1800498021	GWC14	13-Apr-2018	1356	0.06	<0.001	5.97	500	42	<1	75	0.005			1090	<1	5.28	1.18	0.018	18	0.036	<0.001	0.001		7.3	19	<0.01	217	0.804	2	20.5		500	12.1	13.5	585		0.039		
ME1800498022	GWA15	13-Apr-2018	1409																																				
ME1800498023	GWC15	13-Apr-2018	1430	0.23	<0.001	0.486	1090	71	<1	256	0.019			3120	<1	4.73	2.60	0.002	47	0.094	<0.001	0.002		6.7	32	<0.01	771	1.45	432	20.0		1090	38.0	41.8	1850		0.013		
ME1800498024	GWC25	18-Apr-2018	1159	0.53	0.001	0.068	468	17	<1	272	0.033			1550	<1	6.94	1.01	0.009	63	0.160	0.002	0.086		7.2	6	<0.01	225	0.306	64	19.5		468	18.4	16.0	842		0.012		
ME1800498025	GWC19	18-Apr-2018	1033																																				
ME1800498026	GWC35	18-Apr-2018	1103	0.10	<0.001	0.197	204	31	<1	40	0.024			538	<1	0.94	0.80	<0.001	19	0.152	0.007	0.043		6.9	16	<0.01	44	0.248	16	21.0		204	5.54	5.43	336		0.012		
ME1800498027	GWC33	11-Apr-2018	1114	12.7	0.004	0.072	<1	630	39	106	0.013			6930	1470	0.90	8.93	0.009	<1	0.839	0.004	0.018		12.5	22	<0.01	44	0.293	7	22.0		1510	33.3	33.9	1730		0.062		
ME1800498028	GWC26	11-Apr-2018	1152	0.80	<0.001	0.333	479	46	<1	162	0.026			1350	<1	0.68	3.25	0.005	22	0.085	0.003	0.008		7.2	18	<0.01	242	0.532	36	20.5		479	14.9	15.1	722		0.046		
ME1800498029	GWC18	09-Apr-2018	1350																																				
ME1800498030	GWC17	12-Apr-2018	1118	0.46	<0.001	0.092	488	103	<1	279	0.003			1920	<1	2.51	6.08	0.003	55	0.130	0.002	0.001		6.9	27	<0.01	288	1.01	199	22.0		488	21.8	22.9	1130		0.010		
ME1800498																																							

Sample Number	Sample Location	Sampling Date	Sampling Time	Aluminium mg/L	Arsenic mg/L	Barium mg/L	Bicarbonate Alkalinity as CaCO ₃ mg/L	Calcium - Dissolved mg/L	Carbonate Alkalinity as CaCO ₃ mg/L	Chloride mg/L	Copper mg/L	Depth to Standpipe m	Depth of Dry Bore to Standpipe m	Electrical Conductivity @ 25 °C µS/cm (Field)	Hydroxide Alkalinity as CaCO ₃ mg/L	Ionic Balance %	Iron mg/L	Lead mg/L	Magnesium - Dissolved mg/L	Manganese mg/L	Molybdenum mg/L	Nickel mg/L	No Sample	pH - pH Unit (Field)	Potassium - Dissolved mg/L	Selenium mg/L	Sodium - Dissolved mg/L	Strontium mg/L	Sulphate mg/L	Temperature °C	Temperature - Client Supplied °C	Total Alkalinity as CaCO ₃ mg/L	Total Anions meq/L	Total Cations meq/L	Total Dissolved Solids @ 180°C Dissolved mg/L	Turbidity NTU	Zinc mg/L			
ME1800577035	GWC31	09-Apr-2018	1316										50.975																											
ME1800577036	GWC24	12-Apr-2018	1413									22.190																												
ME1800577037	GWC27	12-Apr-2018	1449									15.830																												
ME1800577038	GWC32	12-Apr-2018	1247									4.240																												
ME1800577039	GWA32	12-Apr-2018	1227									2.800																												
ME1800577040	GWA34	12-Apr-2018	1335									4.535																												
ME1800577041	GWC34	12-Apr-2018	1350										20.350																											
ME1800577042	GWA36	11-Apr-2018	1324										5.940																											
ME1800577043	GWC36	11-Apr-2018	1304									15.750																												
ME1800577044	GWA16	11-Apr-2018	1247										4.120																											
ME1800577045	PZ13	12-Apr-2018	1035										2.955																											
ME1800577046	PZ20	18-Apr-2018	1322										3.750																											
ME1800577047	PZ21	18-Apr-2018	1315									4.100																												
ME1800577048	PZ26	18-Apr-2018	1337										4.330																											
ME1800577049	Barologger Office	18-Apr-2018	1407																																					
ME1800617001	GWA1	04-May-2018	1250																																					
ME1800617002	GWA2	25-May-2018	1036	15.6	0.163	0.273	182	27	<1	328	0.024			1400	<1	4.33	182	0.024	40	3.91	0.002	0.038		6.9	8	<0.01	195	0.412	79	18.5		182	14.5	13.3	896		0.052			
ME1800617003	GWA3	25-May-2018	1108																																					
ME1800617004	GWA4	23-May-2018	1514																																					
ME1800617005	GWA5	17-May-2018	1634																																					
ME1800617006	GWA6	25-May-2018	1147																																					
ME1800617007	GWA7	25-May-2018	1213																																					
ME1800617008	GWA8	25-May-2018	1312	4.62	0.002	0.149	257	103	<1	345	0.011			2080	<1	3.65	7.24	0.007	94	20.8	0.001	0.020		7.1	11	<0.01	207	1.13	431	19.0		257	23.8	22.2	1310		0.038			
ME1800617009	GWC1	25-May-2018	1049	0.17	0.002	0.169	574	149	<1	624	0.002			3510	<1	4.31	3.31	<0.001	102	0.759	<0.001	0.005		7.1	26	<0.01	457	1.68	508	17.0		574	39.6	36.4	2180		0.011			
ME1800617010	GWC2	25-May-2018	1118	0.44	<0.001	0.434	515	65	<1	112	0.003			1260	<1	3.53	2.16	0.001	29	0.072	<0.001	0.003		7.1	25	<0.01	156	0.638	27	19.0		515	14.0	13.0	670		0.017			
ME1800617011	GWC3	25-May-2018	1138																																					
ME1800617012	GWC4	25-May-2018	1251	0.05	<0.001	0.062	648	166	<1	347	0.003			2350	<1	5.31	5.64	0.001	78	0.048	<0.001	0.001		6.6	47	<0.01	211	1.89	248	19.5		648	27.9	25.1	1420		0.020			
ME1800617013	GWC5	25-May-2018	1331	0.10	<0.001	0.230	2380	257	<1	537	0.002			5360	<1	4.83	1.01	0.005	145	1.64	<0.001	0.029		6.7	80	<0.01	837	9.93	333	18.5		2380	69.6	63.2	3670		0.025			
ME1800617014	GWA10	23-May-2018	1219	6.38	0.010	0.067	574	120	<1	686	0.012			3260	<1	3.27	9.32	0.003	122	1.88	<0.001	0.013		7.1	2	<0.01	433	1.15	310	19.5		574	37.3	34.9	1780		0.014			
ME1800617015	GWC10	23-May-2018	1239	0.07	<0.001	0.053	405	206	<1	411	0.052			3710	<1	2.98	5.15	<0.001	125	0.678	0.004	0.019		6.9	30	<0.01	495	2.20	1240	20.0		405	45.5	42.9	3210		0.010			
ME1800617016	GWA11	23-May-2018	1253	1.08	<0.001	0.111	1590	74	<1	244	0.016			3570	<1	0.17	1.90	0.001	84	0.971	<0.001	0.006		7.5	26	<0.01	756	1.62	257	19.5		1590	44.0	44.2	2080		0.023			
ME1800617017	GWC11	23-May-2018	1316	0.54	<0.001	0.053	353	131	<1	335	0.006			3460	<1	1.23	23.3	0.003	136	1.81	0.001	0.012		6.5	29	<0.01	492	1.27	1170	18.5		353	40.9	39.9	1950		0.028			
ME1800617018	GWA12	23-May-2018	1340																																					
ME1800617019	GWC12	23-May-2018	1404	6.50	<0.001	4.35	605	42	<1	123	0.016			1480	<1	0.43	6.99	0.004	19	0.139	0.001	0.018		7.4	18	<0.01	282	0.747	33	20.0		605	16.2	16.4	736		0.021			
ME1800617020	GWA14	23-May-2018	1416																																					
ME1800617021	GWC14	23-May-2018	1430	0.23	<0.001	13.1	518	42	<1	76	0.007			1080	<1	3.50	1.36	0.010	18	0.039	<0.001	0.002		7.3	17	<0.01	176	1.09	1	19.0		518	12.5	11.7	549		0.024			
ME1800617022	GWA15	23-May-2018	1446																																					
ME1800617023	GWC15	23-May-2018	1502	0.22	<0.001	0.542	1060	76	<1	265	0.010			3130	<1	0.39	2.66	0.002	50	0.097	<0.001	0.002		6.6	32	<0.01	653	1.40	421	18.5		1060	37.4	37.1	2280		0.012			
ME1800617024	GWC25	11-May-2018	1242	0.52	0.003	0.038	460	21	<1	282	0.025			1670	<1	0.33	0.80	0.007	80	0.159	0.001	0.085		7.6	11	<0.01	232	0.380	47	18.5		460	18.1	18.0	828		0.007			
ME1800617025	GWC19	04-May-2018	1242																																					
ME1800617026	GWC35	11-May-2018	1159	0.11	<0.001	0.174	209	34	<1	37	0.038			555	<1	4.80	0.59	<0.001	22	0.171	0.008	0.030		7.1	23	<0.01	49	0.228	21	19.5		209	5.66	6.23	320		0.011			
ME1800617027	GWC33	04-May-2018	1138	0.75	<0.001	0.222	<1	471	50	59	0.002			6050	1280	4.62	0.18	<0.001	<1	0.010	0.001	0.001		12.6	16	<0.01	43	0.258	2	20.5		1330	28.3	25.8	1220		0.015			
ME1800617028	GWC26	04-May-2018	1218	0.14	<0.001	0.186	458	52	<1	149	0.005			1310	<1	1.42	1.16	<0.001	23	0.060	0.001	0.003		7.1	17	<0.01	202	0.408	36	20.0		458	14.1	13.7	676		0.020			
ME1800617029	GWC18	04-May-2018	1024																																					
ME1800617030	GWC17	04-May-2018	1319	0.08	<0.001	0.078	478	110	<1	283	<0.001			1920	<1	2.98	6.14	0.004	56	0.100	0.002	<0.001		7.0	26	<0.01	236	0.904	230	21.5		478	22.3	21.0	1020		0.012			
ME1800617031	GWC16	04-May-2018	1353	0.06	<0.001	0.120	617	84	<1	362	0.012			2210	<1	0.71	1.89	<0.001	40	0.033	<0.001	<0.001		7.2	22	<0.01	366	0.728	85	19.0		617	24.3	24.0	1220		0.014			
ME1800617032	GWC28	10-May-2018																																						

Sample Number	Sample Location	Sampling Date	Sampling Time	Aluminium mg/L	Arsenic mg/L	Barium mg/L	Bicarbonate Alkalinity as CaCO3 mg/L	Calcium - Dissolved mg/L	Carbonate Alkalinity as CaCO3 mg/L	Chloride mg/L	Copper mg/L	Depth to Standpipe m	Depth of Dry Bore to Standpipe m	Electrical Conductivity @ 25° C µS/cm (Field)	Hydroxide Alkalinity as CaCO3 mg/L	Ionic Balance %	Iron mg/L	Lead mg/L	Magnesium - Dissolved mg/L	Manganese mg/L	Molybdenum mg/L	Nickel mg/L	No Sample	pH - pH Unit (Field)	Potassium - Dissolved mg/L	Selenium mg/L	Sodium - Dissolved mg/L	Strontium mg/L	Sulphate mg/L	Temperature °C	Temperature - Client Supplied °C	Total Alkalinity as CaCO3 mg/L	Total Anions meq/L	Total Cations meq/L	Total Dissolved Solids @ 180° C - Dissolved mg/L	Turbidity NTU	Zinc mg/L	
ME1800617036	GWC24	21-May-2018	1440	0.34	0.003	0.041	21	111	<1	600	0.008			3480	<1	5.60	107	0.004	161	9.60	<0.001	0.231		5.7	70	<0.01	354	0.806	1100	19.0		21	40.2	36.0	2360		0.295	
ME1800617037	GWC27	21-May-2018	1540	3.42	0.020	0.110	7	34	<1	366	0.101			1730	<1	1.86	14.1	0.032	41	4.72	<0.001	0.070		4.9	36	<0.01	237	0.187	310	17.0		7	16.9	16.3	1070		0.572	
ME1800617038	GWC32	10-May-2018	1358	0.05	<0.001	0.042	1400	150	<1	323	0.012			3410	<1	3.21	2.56	<0.001	110	0.066	0.005	0.010		6.6	44	<0.01	538	4.38	322	18.5		1400	43.8	41.1	2120		0.010	
ME1800617039	GWA32	10-May-2018	1341	0.06	<0.001	0.045	423	149	<1	525	0.002			3250	<1	1.47	<0.05	<0.001	159	0.130	0.002	0.001		7.2	23	<0.01	377	1.79	738	18.0		423	38.6	37.5	2110		0.008	
ME1800617040	GWA34	10-May-2018	1436	20.7	0.002	0.018	<1	527	<1	351	0.042			6050	<1	3.78	118	0.002	538	13.2	<0.001	1.01		4.6	6	0.01	418	0.739	4130	19.5		<1	95.9	88.9	6470		2.53	
ME1800617041	GWC34	10-May-2018	1448																																			
ME1800617042	GWA36	04-May-2018	1419																																			
ME1800617043	GWC36	04-May-2018	1436	0.20	<0.001	0.025	219	160	<1	319	0.002			3690	<1	9.05	16.7	<0.001	177	1.88	0.001	0.019		6.4	35	<0.01	440	1.24	1810	18.5		219	51.0	42.6	2690		0.037	
ME1800617044	GWA16	04-May-2018	1405																																			
ME1800617045	PZ13	04-May-2018	1054																																			
ME1800617046	PZ20	11-May-2018	1319																																			
ME1800617047	PZ21	11-May-2018	1332	18.8	0.007	0.111	479	16	<1	40	0.030			1170	<1	0.68	18.9	0.021	17	1.14	0.004	0.042		7.7	9	<0.01	235	0.320	102	19.0		479	12.8	12.6	623		0.145	
ME1800617048	PZ26	11-May-2018	1340																																			
ME1800739001	GWA1	04-May-2018	1250										4.950																									
ME1800739002	GWA2	25-May-2018	1030									4.505																										
ME1800739003	GWA3	25-May-2018	1108										5.610																									
ME1800739004	GWA4	23-May-2018	1514										4.875																									
ME1800739005	GWA5	17-May-2018	1634										4.135																									
ME1800739006	GWA6	25-May-2018	1147										2.885																									
ME1800739007	GWA7	25-May-2018	1213										5.200																									
ME1800739008	GWA8	25-May-2018	1307										2.205																									
ME1800739009	GWC1	25-May-2018	1042										10.720																									
ME1800739010	GWC2	25-May-2018	1112										15.145																									
ME1800739011	GWC3	25-May-2018	1132										15.190																									
ME1800739012	GWC4	25-May-2018	1245										15.175																									
ME1800739013	GWC5	25-May-2018	1325										6.020																									
ME1800739014	GWA10	23-May-2018	1213										4.640																									
ME1800739015	GWC10	23-May-2018	1232										4.630																									
ME1800739016	GWA11	23-May-2018	1249										3.665																									
ME1800739017	GWC11	23-May-2018	1305										15.145																									
ME1800739018	GWA12	23-May-2018	1340										5.710																									
ME1800739019	GWC12	23-May-2018	1347										34.605																									
ME1800739020	GWA14	23-May-2018	1416										4.950																									
ME1800739021	GWC14	23-May-2018	1425										31.180																									
ME1800739022	GWA15	23-May-2018	1445										3.670																									
ME1800739023	GWC15	23-May-2018	1453										26.850																									
ME1800739024	GWC25	11-May-2018	1232										28.490																									
ME1800739025	GWC19	04-May-2018	0922																																			
ME1800739026	GWC35	11-May-2018	1146										43.525																									
ME1800739027	GWC33	04-May-2018	1125										40.320																									
ME1800739028	GWC26	04-May-2018	1208										39.620																									
ME1800739029	GWC18	04-May-2018	0922																																			
ME1800739030	GWC17	04-May-2018	1309										43.060																									
ME1800739031	GWC16	04-May-2018	1347										26.460																									
ME1800739032	GWC28	10-May-2018	1155										41.585																									
ME1800739033	GWC29	10-May-2018	1230										41.980																									
ME1800739034	GWC30	10-May-2018	1305										33.130																									
ME1800739035	GWC31	11-May-2018	1432										51.075																									
ME1800739036	GWC24	21-May-2018	1426										22.280																									
ME1800739037	GWC27	21-May-2018	1525										15.930																									

Sample Number	Sample Location	Sampling Date	Sampling Time	Aluminium mg/L	Arsenic mg/L	Barium mg/L	Bicarbonate Alkalinity as CaCO3 mg/L	Calcium - Dissolved mg/L	Carbonate Alkalinity as CaCO3 mg/L	Chloride mg/L	Copper mg/L	Depth to Standpipe m	Depth of Dry Bore to Standpipe m	Electrical Conductivity @ 25°C µS/cm (Field)	Hydroxide Alkalinity as CaCO3 mg/L	Ionic Balance %	Iron mg/L	Lead mg/L	Magnesium - Dissolved mg/L	Manganese mg/L	Molybdenum mg/L	Nickel mg/L	No Sample	pH - pH Unit (Field)	Potassium - Dissolved mg/L	Selenium mg/L	Sodium - Dissolved mg/L	Strontium mg/L	Sulphate mg/L	Temperature °C	Temperature - Client Supplied °C	Total Alkalinity as CaCO3 mg/L	Total Anions meq/L	Total Cations meq/L	Total Dissolved Solids @ 180°C - Dissolved mg/L	Turbidity NTU	Zinc mg/L	
ME1800739038	GWC32	10-May-2018	1350									4.240																										
ME1800739039	GWA32	10-May-2018	1334									2.200																										
ME1800739040	GWA34	10-May-2018	1430									4.490																										
ME1800739041	GWC34	10-May-2018	1445										20.240																									
ME1800739042	GWA36	04-May-2018	1419										5.940																									
ME1800739043	GWC36	04-May-2018	1423									15.310																										
ME1800739044	GWA16	04-May-2018	1405										4.050																									
ME1800739045	PZ13	04-May-2018	1052										2.300																									
ME1800739046	PZ20	11-May-2018	1319										3.935																									
ME1800739047	PZ21	11-May-2018	1332									4.260																										
ME1800739048	PZ26	11-May-2018	1340																																			
ME1800739049	Barologger Office	23-May-2018	1133																																			
ME1800806001	GWA1	14-Jun-2018	1200																																			
ME1800806002	GWA2	19-Jun-2018	1211	2.45	0.034	0.210	173	25	<1	330	0.019			1400	<1	7.72	143	0.015	37	3.69	<0.001	0.020		7.0	6	<0.01	182	0.425	80	18.0		173	14.4	12.4	766		0.028	
ME1800806003	GWA3	19-Jun-2018	1226																																			
ME1800806004	GWA4	14-Jun-2018	1306																																			
ME1800806005	GWA5	14-Jun-2018	1521																																			
ME1800806006	GWA6	19-Jun-2018	1255																																			
ME1800806007	GWA7	19-Jun-2018	1324																																			
ME1800806008	GWA8	19-Jun-2018	1456	0.78	<0.001	0.093	260	91	<1	327	0.004			2020	<1	6.88	1.36	0.003	89	21.4	<0.001	0.012		7.0	9	<0.01	195	1.10	442	16.0		260	23.6	20.6	1220		0.014	
ME1800806009	GWC1	19-Jun-2018	1201	0.06	0.002	0.096	569	143	<1	632	0.001			3510	<1	6.14	2.24	<0.001	102	0.704	<0.001	0.005		7.1	25	<0.01	452	1.76	544	17.5		569	40.5	35.8	2140		0.008	
ME1800806010	GWC2	19-Jun-2018	1235	1.65	<0.001	0.387	577	65	<1	111	0.006			1260	<1	8.76	3.16	0.002	29	0.089	<0.001	0.005		7.1	22	<0.01	150	0.664	24	18.5		577	15.2	12.7	687		0.054	
ME1800806011	GWC3	19-Jun-2018	1252																																			
ME1800806012	GWC4	19-Jun-2018	1418	0.16	<0.001	0.091	668	161	<1	340	0.003			2350	<1	6.95	5.93	0.002	77	0.056	<0.001	0.001		6.6	46	<0.01	208	2.00	256	19.0		668	28.3	24.6	1370		0.020	
ME1800806013	GWC5	19-Jun-2018	1516	3.20	0.004	0.060	2360	186	<1	542	0.002			3570	<1	20.1	7.31	0.002	104	1.93	<0.001	0.010		6.6	60	<0.01	622	1.18	354	17.5		2360	69.8	46.4	3530		0.010	
ME1800806014	GWA10	27-Jun-2018	1135	0.12	<0.001	0.049	487	111	<1	690	0.043			3270	<1	5.39	7.82	<0.001	114	0.434	0.003	0.010		7.1	1	<0.01	402	2.23	333	18.0		487	36.1	32.4	1790		0.007	
ME1800806015	GWC10	27-Jun-2018	1208	0.12	<0.001	0.049	373	194	<1	418	0.044			3730	<1	6.48	7.75	<0.001	119	0.429	0.003	0.010		7.0	30	<0.01	457	2.19	1270	19.0		373	45.7	40.1	2710		0.006	
ME1800806016	GWA11	27-Jun-2018	1233	8.51	0.002	0.071	967	38	<1	139	0.020			2230	<1	1.08	6.31	0.006	42	0.502	<0.001	0.010		7.6	14	<0.01	452	0.799	129	17.0		967	25.9	25.4	1460		0.018	
ME1800806017	GWC11	27-Jun-2018	1258	1.29	<0.001	0.061	371	132	<1	348	0.008			3590	<1	5.33	21.4	0.003	138	2.04	<0.001	0.008		6.6	29	<0.01	477	1.47	1280	18.5		371	43.9	39.4	2480		0.024	
ME1800806018	GWA12	27-Jun-2018	1319																																			
ME1800806019	GWC12	27-Jun-2018	1347	2.19	<0.001	1.90	520	31	<1	122	0.006			1360	<1	6.70	2.12	0.001	13	0.042	0.002	0.008		7.6	13	<0.01	232	0.507	52	19.0		520	14.9	13.0	756		0.008	
ME1800806020	GWA14	27-Jun-2018	1400																																			
ME1800806021	GWC14	27-Jun-2018	1420	0.15	<0.001	20.2	464	38	<1	70	0.006			1090	<1	3.35	1.19	0.023	15	0.025	<0.001	0.001		7.4	14	<0.01	162	1.63	1	19.0		464	11.3	10.5	591		0.042	
ME1800806022	GWA15	27-Jun-2018	1435																																			
ME1800806023	GWC15	27-Jun-2018	1455	0.39	<0.001	1.52	569	56	<1	224	0.018			1690	<1	2.66	4.40	0.005	29	0.080	<0.001	0.002		7.1	18	<0.01	274	0.863	40	18.0		569	18.5	17.6	892		0.017	
ME1800806024	GWC25	15-Jun-2018	1139	0.36	0.002	0.043	451	21	<1	294	0.023			1680	<1	2.24	0.65	0.007	79	0.164	<0.001	0.068		7.4	7	<0.01	232	0.353	64	18.5		451	18.6	17.8	863		0.009	
ME1800806025	GWC19	14-Jun-2018	1139																																			
ME1800806026	GWC35	15-Jun-2018	1104	0.11	0.002	0.195	253	43	<1	43	0.038			658	<1	0.44	1.96	0.001	25	0.443	0.008	0.043		7.0	20	<0.01	51	0.317	29	20.0		253	6.87	6.93	338		0.017	
ME1800806027	GWC33	14-Jun-2018	1055	0.47	<0.001	0.230	<1	553	25	144	0.003			6120	1290	0.41	0.51	0.001	<1	0.019	0.002	0.002		12.5	20	<0.01	49	0.269	12	18.5		1310	30.5	30.2	1660		0.019	
ME1800806028	GWC26	14-Jun-2018	1147	0.21	<0.001	0.198	500	44	<1	158	0.007			1380	<1	1.51	0.80	<0.001	20	0.049	0.001	0.002		7.3	16	<0.01	238	0.412	29	18.5		500	15.0	14.6	796		0.016	
ME1800806029	GWC18	14-Jun-2018	1147																																			
ME1800806030	GWC17	14-Jun-2018	1023	0.38	<0.001	0.093	473	125	<1	296	0.002			2070	<1	2.02	10.7	0.004	63	0.091	0.006	0.001		6.9	27	<0.01	235	1.10	262	19.0		473	23.2	22.3	997		0.010	
ME1800806031	GWC16	14-Jun-2018	1225	0.06	<0.001	0.144	669	68	<1	319	0.003			2100	<1	2.26	3.81	<0.001	34	0.036	<0.001	0.001		7.2	21	<0.01	372	0.672	77	18.5		669	24.0	22.9	1040		0.009	
ME1800806032	GWC28	18-Jun-2018	1122	0.10	<0.001	0.112	755	135	<1	481	0.029			3000	<1	3.89	1.04	<0.001	75	0.053	0.007	0.024		6.8	39	<0.01	411	2.09	274	19.5		755	34.4	31.8	1750		0.018	
ME1800806033	GWC29	18-Jun-2018	1218	0.16	<0.001	0.129	656	109	<1	304	0.016			2200	<1	5.20	0.55	<0.001	82	0.053	0.020	0.068		6.9	34	<0.01	240	1.05	211	19.0		656	26.1	23.5	1190		0.030	
ME1800806034	GWC30	18-Jun-2018	1248	0.18	<0.001	0.085	630	219	<1	583	0.019			3050	<1	3.72	2.56	0.001	153	0.118	0.006	0.029		6.8	49	<0.01	182	2.40	297</									

Sample Number	Sample Location	Sampling Date	Sampling Time	Aluminium mg/L	Arsenic mg/L	Barium mg/L	Bicarbonate Alkalinity as CaCO3 mg/L	Calcium - Dissolved mg/L	Carbonate Alkalinity as CaCO3 mg/L	Chloride mg/L	Copper mg/L	Depth to Standpipe m	Depth of Dry Bore to Standpipe m	Electrical Conductivity @ 25° C µS/cm (Field)	Hydroxide Alkalinity as CaCO3 mg/L	Ionic Balance %	Iron mg/L	Lead mg/L	Magnesium - Dissolved mg/L	Manganese mg/L	Molybdenum mg/L	Nickel mg/L	No Sample	pH - pH Unit (Field)	Potassium - Dissolved mg/L	Selenium mg/L	Sodium - Dissolved mg/L	Strontium mg/L	Sulphate mg/L	Temperature °C	Temperature - Client Supplied °C	Total Alkalinity as CaCO3 mg/L	Total Anions meq/L	Total Cations meq/L	Total Dissolved Solids @ 180° C - Dissolved mg/L	Turbidity NTU	Zinc mg/L		
ME1800806039	GWA32	18-Jun-2018	1321	0.13	<0.001	0.053	410	137	<1	547	0.002			3320	<1	1.44	<0.05	<0.001	155	0.156	0.002	0.002		7.3	21	<0.01	375	1.94	667	16.0		410	37.5	36.4	2380		0.006		
ME1800806040	GWA34	18-Jun-2018	1409	21.7	0.002	0.022	<1	452	<1	362	0.050			6100	<1	5.76	125	0.003	502	13.4	<0.001	0.997		4.8	6	0.01	392	0.754	3880	18.5		<1	91.0	81.1	5960		2.53		
ME1800806041	GWC34	18-Jun-2018	1422	3.04	0.004	0.166	1670	79	<1	248	0.115			4330	<1	0.02	6.99	0.017	72	0.213	0.005	0.190		7.1	20	0.01	940	6.08	525	16.5		1670	51.3	51.3	3960		0.084		
ME1800806042	GWA36	15-Jun-2018	1353																																				
ME1800806043	GWC36	15-Jun-2018	1411	0.62	<0.001	0.056	217	174	<1	354	0.004			3760	<1	1.18	19.7	0.002	189	2.05	0.002	0.018		6.4	36	<0.01	463	1.34	1540	17.5		217	46.4	45.3	2850		0.045		
ME1800806044	GWA16	14-Jun-2018	1234																																				
ME1800806045	PZ13	15-Jun-2018	1339																																				
ME1800806046	PZ20	15-Jun-2018	1247																																				
ME1800806047	PZ21	15-Jun-2018	1255	81.8	0.021	0.400	521	18	<1	46	0.100			1380	<1	0.51	80.0	0.075	22	2.74	0.003	0.125		7.6	10	0.01	284	0.664	181	18.5		521	15.5	15.3	2330		0.548		
ME1800806048	PZ26	15-Jun-2018	1236																																				
ME1800899001	GWA1	14-Jun-2018	1200									4.950																											
ME1800899002	GWA2	19-Jun-2018	1206										4.540																										
ME1800899003	GWA3	19-Jun-2018	1223										5.610																										
ME1800899004	GWA4	14-Jun-2018	1306										4.870																										
ME1800899005	GWA5	14-Jun-2018	1521										4.210																										
ME1800899006	GWA6	19-Jun-2018	1255										2.890																										
ME1800899007	GWA7	19-Jun-2018	1324										5.200																										
ME1800899008	GWA8	19-Jun-2018	1452										1.730																										
ME1800899009	GWC1	19-Jun-2018	1155										10.980																										
ME1800899010	GWC2	19-Jun-2018	1228										15.090																										
ME1800899011	GWC3	19-Jun-2018	1246									15.315																											
ME1800899012	GWC4	19-Jun-2018	1411										15.195																										
ME1800899013	GWC5	19-Jun-2018	1510										5.990																										
ME1800899014	GWA10	27-Jun-2018	1127										4.630																										
ME1800899015	GWC10	27-Jun-2018	1149										5.025																										
ME1800899016	GWA11	27-Jun-2018	1214										3.510																										
ME1800899017	GWC11	27-Jun-2018	1242										15.260																										
ME1800899018	GWA12	27-Jun-2018	1319										5.800																										
ME1800899019	GWC12	27-Jun-2018	1333										35.740																										
ME1800899020	GWA14	27-Jun-2018	1400										4.960																										
ME1800899021	GWC14	27-Jun-2018	1408										32.640																										
ME1800899022	GWA15	27-Jun-2018	1435										3.650																										
ME1800899023	GWC15	27-Jun-2018	1442										28.340																										
ME1800899024	GWC25	15-Jun-2018	1128										28.820																										
ME1800899025	GWC19	14-Jun-2018	0938																																				
ME1800899026	GWC35	15-Jun-2018	1052										44.290																										
ME1800899027	GWC33	14-Jun-2018	1050										40.890																										
ME1800899028	GWC26	14-Jun-2018	1135										40.155																										
ME1800899029	GWC18	14-Jun-2018	0938																																				
ME1800899030	GWC17	14-Jun-2018	1011										43.405																										
ME1800899031	GWC16	14-Jun-2018	1216										28.440																										
ME1800899032	GWC28	18-Jun-2018	1109										42.470																										
ME1800899033	GWC29	18-Jun-2018	1204										42.630																										
ME1800899034	GWC30	18-Jun-2018	1240										33.575																										
ME1800899035	GWC31	18-Jun-2018	1445										50.900																										
ME1800899036	GWC24	18-Jun-2018	1505										22.390																										
ME1800899037	GWC27	18-Jun-2018	1540										15.930																										
ME1800899038	GWC32	18-Jun-2018	1333										4.275																										
ME1800899039	GWA32	18-Jun-2018	1314										2.610																										
ME1800899040	GWA34	18-Jun-2018	1358										4.560																										

Sample Number	Sample Location	Sampling Date	Sampling Time	Aluminium mg/L	Arsenic mg/L	Barium mg/L	Bicarbonate Alkalinity as CaCO3 mg/L	Calcium - Dissolved mg/L	Carbonate Alkalinity as CaCO3 mg/L	Chloride mg/L	Copper mg/L	Depth to Standpipe m	Depth of Dry Bore to Standpipe m	Electrical Conductivity @ 25° C µS/cm (Field)	Hydroxide Alkalinity as CaCO3 mg/L	Ionic Balance %	Iron mg/L	Lead mg/L	Magnesium - Dissolved mg/L	Manganese mg/L	Molybdenum mg/L	Nickel mg/L	No Sample	pH - pH Unit (Field)	Potassium - Dissolved mg/L	Selenium mg/L	Sodium - Dissolved mg/L	Strontium mg/L	Sulphate mg/L	Temperature °C	Temperature - Client Supplied °C	Total Alkalinity as CaCO3 mg/L	Total Anions meq/L	Total Cations meq/L	Total Dissolved Solids @ 180° C - Dissolved mg/L	Turbidity NTU	Zinc mg/L		
ME1800899041	GWC34	18-Jun-2018	1416										20.155																										
ME1800899042	GWA36	15-Jun-2018	1353									5.940																											
ME1800899043	GWC36	15-Jun-2018	1358										15.480																										
ME1800899044	GWA16	14-Jun-2018	1234									4.050																											
ME1800899045	PZ13	15-Jun-2018	1339									2.310																											
ME1800899046	PZ20	15-Jun-2018	1247									4.140																											
ME1800899047	PZ21	15-Jun-2018	1251										4.440																										
ME1800899048	PZ26	15-Jun-2018	1236									4.340																											
ME1800899049	Barologger Office	27-Jun-2018	1101																																				
ME1800933001	GWA1	12-Jul-2018	1345																																				
ME1800933002	GWA2	26-Jul-2018	1119	4.08	0.039	0.097	162	24	<1	337	0.006			1310	<1	9.22	44.0	0.004	35	1.53	<0.001	0.011		7.0	6	<0.01	180	0.338	85	17.0		162	14.5	12.1	768		0.016		
ME1800933003	GWA3	26-Jul-2018	1229																																				
ME1800933004	GWA4	26-Jul-2018	1208																																				
ME1800933005	GWA5	17-Jul-2018	1404																																				
ME1800933006	GWA6	26-Jul-2018	1309																																				
ME1800933007	GWA7	26-Jul-2018	1325																																				
ME1800933008	GWA8	26-Jul-2018	1510	0.27	<0.001	0.062	240	89	<1	322	0.005			2000	<1	7.86	0.78	0.001	85	15.6	<0.001	0.010		7.0	9	<0.01	190	1.03	454	14.5		240	23.3	19.9	1230		0.010		
ME1800933009	GWC1	26-Jul-2018	1143	0.07	<0.001	0.096	528	144	<1	621	0.001			3480	<1	5.72	1.03	<0.001	101	0.602	<0.001	0.004		7.2	26	<0.01	448	1.80	572	17.0		528	40.0	35.6	2250		0.008		
ME1800933010	GWC2	26-Jul-2018	1237	0.02	<0.001	0.286	482	63	<1	110	<0.001			1240	<1	3.28	0.09	<0.001	28	0.053	<0.001	0.001		7.2	24	<0.01	146	0.610	25	18.5		482	13.2	12.4	691		0.009		
ME1800933011	GWC3	26-Jul-2018	1306																																				
ME1800933012	GWC4	26-Jul-2018	1428	0.53	0.002	0.138	615	157	<1	339	0.006			2310	<1	5.58	10.4	0.004	76	0.072	<0.001	0.003		6.7	46	<0.01	207	2.06	254	19.0		615	27.1	24.3	1520		0.037		
ME1800933013	GWC5	26-Jul-2018	1529	0.07	<0.001	0.222	2360	202	<1	473	0.003			5270	<1	12.3	1.72	0.002	119	1.54	<0.001	0.028		6.6	67	<0.01	719	8.24	343	17.5		2360	67.6	52.9	3480		0.027		
ME1800933014	GWA10	27-Jul-2018	1147	4.29	0.010	0.080	488	109	<1	682	0.010			3270	<1	5.97	7.47	0.004	114	2.00	<0.001	0.016		7.2	1	<0.01	394	1.16	339	16.5		488	36.0	32.0	2000		0.014		
ME1800933015	GWC10	27-Jul-2018	1203	0.36	<0.001	0.050	372	195	<1	413	0.079			3720	<1	4.90	7.09	0.003	120	0.396	0.003	0.014		7.4	29	<0.01	468	2.18	1240	17.5		372	44.9	40.7	2790		0.010		
ME1800933016	GWA11	27-Jul-2018	1220	1.28	<0.001	0.047	886	32	<1	121	0.006			2050	<1	0.82	2.25	0.002	36	0.415	<0.001	0.005		7.7	12	<0.01	417	0.624	109	16.5		886	23.4	23.0	1280		0.006		
ME1800933017	GWC11	27-Jul-2018	1248	1.43	<0.001	0.071	356	137	<1	350	0.007			3710	<1	4.98	15.3	0.004	146	2.07	<0.001	0.009		6.7	30	<0.01	483	1.56	1340	18.0		356	44.9	40.6	2810		0.036		
ME1800933018	GWA12	27-Jul-2018	1304																																				
ME1800933019	GWC12	27-Jul-2018	1337	2.58	<0.001	1.58	629	39	<1	128	0.009			1550	<1	3.26	3.35	0.003	17	0.100	<0.001	0.009		7.4	16	<0.01	281	0.558	42	20.0		629	17.0	16.0	824		0.014		
ME1800933020	GWA14	27-Jul-2018	1351																																				
ME1800933021	GWC14	27-Jul-2018	1407	0.18	<0.001	8.22	449	38	<1	72	0.007			1090	<1	0.82	1.92	0.033	16	0.036	<0.001	0.002		7.4	16	<0.01	166	0.920	1	19.0		449	11.0	10.8	643		0.079		
ME1800933022	GWA15	27-Jul-2018	1423																																				
ME1800933023	GWC15	27-Jul-2018	1444	1.02	<0.001	2.99	574	58	<1	210	0.037			1660	<1	1.49	7.34	0.013	28	0.133	<0.001	0.004		7.1	21	<0.01	273	0.913	36	18.5		574	18.1	17.6	946		0.053		
ME1800933024	GWC25	23-Jul-2018	1220	0.44	0.002	0.063	424	18	<1	285	0.025			1650	<1	5.28	0.57	0.005	71	0.150	0.001	0.081		7.5	6	<0.01	208	0.336	58	18.5		424	17.7	15.9	914		0.012		
ME1800933025	GWC19	12-Jul-2018	1053																																				
ME1800933026	GWC35	23-Jul-2018	1140	0.12	0.003	0.193	235	41	<1	53	0.016			681	<1	3.26	2.94	0.001	23	0.480	0.004	0.033		7.0	18	<0.01	47	0.346	33	20.0		235	6.88	6.44	393		0.014		
ME1800933027	GWC33	12-Jul-2018	1240	0.60	<0.001	0.265	<1	559	18	85	0.003			5970	1370	0.48	0.58	0.001	<1	0.023	0.004	0.002		12.6	21	<0.01	51	0.310	9	18.5		1390	30.4	30.6	1640		0.018		
ME1800933028	GWC26	12-Jul-2018	1333	0.33	<0.001	0.218	466	51	<1	158	0.006			1320	<1	0.12	1.15	0.001	23	0.059	<0.001	0.002		7.4	17	<0.01	220	0.470	34	18.0		466	14.5	14.4	734		0.026		
ME1800933029	GWC18	12-Jul-2018	1053																																				
ME1800933030	GWC17	12-Jul-2018	1202	0.16	<0.001	0.069	544	201	<1	472	0.001			2800	<1	0.34	3.46	<0.001	104	0.191	0.346	<0.001		7.0	38	<0.01	327	2.14	450	21.0		544	33.6	33.8	1770		0.007		
ME1800933031	GWC16	12-Jul-2018	1418	0.27	<0.001	0.171	696	78	<1	411	0.003			2110	<1	10.3	5.49	0.001	38	0.038	0.002	<0.001		7.2	23	<0.01	410	0.716	277	18.5		696	31.3	25.4	1230		0.012		
ME1800933032	GWC28	16-Jul-2018	1303	0.10	<0.001	0.082	775	179	<1	504	0.057			3180	<1	4.94	1.82	<0.001	96	0.052	0.003	0.009		6.8	44	<0.01	500	2.37	301	19.0		775	36.0	39.7	2110		0.070		
ME1800933033	GWC29	16-Jul-2018	1359	0.23	<0.001	0.160	579	132	<1	291	0.023			2170	<1	4.25	0.86	<0.001	89	0.055	0.017	0.066		7.1	36	<0.01	264	1.09	211	18.5		579	24.2	26.3	1320		0.031		
ME1800933034	GWC30	16-Jul-2018	1436	0.12	<0.001	0.078	581	265	<1	578	0.007			3100	<1	5.79	3.29	<0.001	179	0.147	0.002	0.011		6.7	55	<0.01	209	2.86	304	18.0		581	34.2	38.4	2100		0.018		
ME1800933035	GWC31	17-Jul-2018	1300																																				
ME1800933036	GWC24	17-Jul-2018	1338	0.40	0.004	0.045	13	110	<1	574	0.004			3560	<1	3.18	93.8	0.005	157																				

Sample Number	Sample Location	Sampling Date	Sampling Time	Aluminium mg/L	Arsenic mg/L	Barium mg/L	Bicarbonate Alkalinity as CaCO3 mg/L	Calcium - Dissolved mg/L	Carbonate Alkalinity as CaCO3 mg/L	Chloride mg/L	Copper mg/L	Depth to Standpipe m	Depth of Dry Bore to Standpipe m	Electrical Conductivity @ 25° C µS/cm (Field)	Hydroxide Alkalinity as CaCO3 mg/L	Ionic Balance %	Iron mg/L	Lead mg/L	Magnesium - Dissolved mg/L	Manganese mg/L	Molybdenum mg/L	Nickel mg/L	No Sample	pH - pH Unit (Field)	Potassium - Dissolved mg/L	Selenium mg/L	Sodium - Dissolved mg/L	Strontium mg/L	Sulphate mg/L	Temperature °C	Temperature - Client Supplied °C	Total Alkalinity as CaCO3 mg/L	Total Anions meq/L	Total Cations meq/L	Total Dissolved Solids @ 180° C - Dissolved mg/L	Turbidity NTU	Zinc mg/L	
ME1800933042	GWA36	16-Jul-2018	1208																																			
ME1800933043	GWC36	16-Jul-2018	1221	0.60	<0.001	0.059	266	157	<1	301	0.004			3350	<1	4.45	19.6	0.002	177	1.43	0.001	0.012		6.4	36	<0.01	470	1.29	1260	17.0		266	40.0	43.8	2630		0.034	
ME1800933044	GWA16	12-Jul-2018	1426																																			
ME1800933045	PZ13	23-Jul-2018	1441																																			
ME1800933046	PZ20	23-Jul-2018	1330																																			
ME1800933047	PZ21	23-Jul-2018	1342	38.8	0.013	0.542	528	20	<1	64	0.026			1610	<1	3.63	150	0.046	25	6.94	<0.001	0.154		7.9	9	<0.01	291	1.58	230	17.5		528	17.1	15.9	1490		1.48	
ME1800933048	PZ26	23-Jul-2018	1314																																			
ME1801039001	GWA1	12-Jul-2018	1345										4.950																									
ME1801039002	GWA2	26-Jul-2018	1114									4.560																										
ME1801039003	GWA3	26-Jul-2018	1229										5.610																									
ME1801039004	GWA4	26-Jul-2018	1208										4.880																									
ME1801039005	GWA5	17-Jul-2018	1404										4.385																									
ME1801039006	GWA6	26-Jul-2018	1309										2.890																									
ME1801039007	GWA7	26-Jul-2018	1325										5.190																									
ME1801039008	GWA8	26-Jul-2018	1507									1.585																										
ME1801039009	GWC1	26-Jul-2018	1126									11.180																										
ME1801039010	GWC2	26-Jul-2018	1232									15.395																										
ME1801039011	GWC3	26-Jul-2018	1300										15.170																									
ME1801039012	GWC4	26-Jul-2018	1421										15.235																									
ME1801039013	GWC5	26-Jul-2018	1523										5.990																									
ME1801039014	GWA10	27-Jul-2018	1126										4.595																									
ME1801039015	GWC10	27-Jul-2018	1158										5.235																									
ME1801039016	GWA11	27-Jul-2018	1215										3.510																									
ME1801039017	GWC11	27-Jul-2018	1232										15.580																									
ME1801039018	GWA12	27-Jul-2018	1304										5.810																									
ME1801039019	GWC12	27-Jul-2018	1343										36.400																									
ME1801039020	GWA14	27-Jul-2018	1351										4.960																									
ME1801039021	GWC14	27-Jul-2018	1357										33.220																									
ME1801039022	GWA15	27-Jul-2018	1423										3.625																									
ME1801039023	GWC15	27-Jul-2018	1432										28.935																									
ME1801039024	GWC25	23-Jul-2018	1207										29.040																									
ME1801039025	GWC19	12-Jul-2018	0815																																			
ME1801039026	GWC35	23-Jul-2018	1128										45.230																									
ME1801039027	GWC33	12-Jul-2018	1246										41.195																									
ME1801039028	GWC26	12-Jul-2018	1315										40.090																									
ME1801039029	GWC18	12-Jul-2018	0815																																			
ME1801039030	GWC17	12-Jul-2018	1150										43.310																									
ME1801039031	GWC16	12-Jul-2018	1409										27.750																									
ME1801039032	GWC28	16-Jul-2018	1250										43.370																									
ME1801039033	GWC29	16-Jul-2018	1349										43.430																									
ME1801039034	GWC30	16-Jul-2018	1419										33.245																									
ME1801039035	GWC31	17-Jul-2018	1300										51.115																									
ME1801039036	GWC24	17-Jul-2018	1325										22.920																									
ME1801039037	GWC27	17-Jul-2018	1437										15.970																									
ME1801039038	GWC32	16-Jul-2018	1512										4.200																									
ME1801039039	GWA32	16-Jul-2018	1453										1.945																									
ME1801039040	GWA34	17-Jul-2018	1216										4.540																									
ME1801039041	GWC34	17-Jul-2018	1233										20.390																									
ME1801039042	GWA36	16-Jul-2018	1208										5.940																									
ME1801039043	GWC36	16-Jul-2018	1231										15.810																									

Sample Number	Sample Location	Sampling Date	Sampling Time	Aluminium mg/L	Arsenic mg/L	Barium mg/L	Bicarbonate Alkalinity as CaCO3 mg/L	Calcium - Dissolved mg/L	Carbonate Alkalinity as CaCO3 mg/L	Chloride mg/L	Copper mg/L	Depth to Standpipe m	Depth of Dry Bore to Standpipe m	Electrical Conductivity @ 25° C µS/cm (Field)	Hydroxide Alkalinity as CaCO3 mg/L	Ionic Balance %	Iron mg/L	Lead mg/L	Magnesium - Dissolved mg/L	Manganese mg/L	Molybdenum mg/L	Nickel mg/L	No Sample	pH - pH Unit (Field)	Potassium - Dissolved mg/L	Selenium mg/L	Sodium - Dissolved mg/L	Strontium mg/L	Sulphate mg/L	Temperature °C	Temperature - Client Supplied °C	Total Alkalinity as CaCO3 mg/L	Total Anions meq/L	Total Cations meq/L	Total Dissolved Solids @ 180° C - Dissolved mg/L	Turbidity NTU	Zinc mg/L		
ME1801039044	GWA16	12-Jul-2018	1420										4.070																										
ME1801039045	PZ13	23-Jul-2018	1441										2.330																										
ME1801039046	PZ20	23-Jul-2018	1330										4.155																										
ME1801039047	PZ21	23-Jul-2018	1335									4.590																											
ME1801039048	PZ26	23-Jul-2018	1314										4.345																										
ME1801039049	Barologger Office	27-Jul-2018	1032																																				
ME1801057001	GWA1	09-Aug-2018	1223																																				
ME1801057002	GWA2	22-Aug-2018	1132	7.28	0.070	0.209	150	25	<1	315	0.012			1440	<1	4.94	79.0	0.009	37	4.38	0.001	0.023		7.0	6	<0.01	176	0.392	71	16.5		150	13.4	12.1	720		0.031		
ME1801057003	GWA3	22-Aug-2018	1219																																				
ME1801057004	GWA4	22-Aug-2018	1207																																				
ME1801057005	GWA5	08-Aug-2018	1420																																				
ME1801057006	GWA6	22-Aug-2018	1245																																				
ME1801057007	GWA7	22-Aug-2018	1318																																				
ME1801057008	GWA8	16-Aug-2018	1238	0.39	<0.001	0.074	237	95	<1	312	<0.001			2030	<1	7.87	0.76	0.003	87	18.5	<0.001	0.009		7.1	10	<0.01	194	1.07	508	15.0		237	24.1	20.6	1320		0.007		
ME1801057009	GWC1	22-Aug-2018	1145	0.22	0.003	0.255	523	144	<1	600	0.002			3660	<1	5.14	3.90	<0.001	102	0.777	<0.001	0.005		7.2	24	<0.01	446	1.79	580	16.5		523	39.4	35.6	2000		0.012		
ME1801057010	GWC2	22-Aug-2018	1229	0.75	<0.001	0.436	484	61	<1	97	0.003			1290	<1	4.98	1.82	0.001	27	0.082	<0.001	0.002		7.2	22	<0.01	135	0.673	25	18.0		484	12.9	11.7	640		0.019		
ME1801057011	GWC3	22-Aug-2018	1255																																				
ME1801057012	GWC4	22-Aug-2018	1356	0.38	0.001	0.114	629	158	<1	380	0.004			2430	<1	10.1	6.18	0.003	75	0.068	<0.001	0.002		6.7	42	<0.01	196	1.97	272	19.0		629	28.9	23.6	1240		0.026		
ME1801057013	GWC5	16-Aug-2018	1254	0.07	<0.001	0.214	2180	195	<1	521	<0.001			5330	<1	17.7	0.75	0.004	100	1.57	<0.001	0.028		6.7	60	<0.01	615	8.10	377	17.5		2180	66.1	46.2	3610		0.021		
ME1801057014	GWA10	21-Aug-2018	1101	6.50	0.013	0.085	483	107	<1	702	0.024			3250	<1	7.64	10.9	0.005	112	2.24	<0.001	0.020		7.1	1	<0.01	376	1.20	317	16.0		483	36.0	30.9	1740		0.019		
ME1801057015	GWC10	21-Aug-2018	1127	0.24	<0.001	0.049	368	207	<1	411	0.036			3700	<1	2.84	2.81	0.001	129	0.316	0.003	0.012		7.4	31	<0.01	486	2.21	1270	16.5		368	45.4	42.9	2570		0.006		
ME1801057016	GWA11	21-Aug-2018	1147	1.52	<0.001	0.036	740	28	<1	106	0.005			1810	<1	3.69	1.80	0.001	30	0.290	<0.001	0.003		7.7	11	<0.01	334	0.542	112	15.0		740	20.1	18.7	964		0.005		
ME1801057017	GWC11	21-Aug-2018	1210	1.63	<0.001	0.049	326	144	<1	345	0.007			3800	<1	7.26	14.7	0.004	152	2.27	<0.001	0.009		6.6	28	<0.01	462	1.57	1470	17.0		326	46.8	40.5	2750		0.035		
ME1801057018	GWA12	21-Aug-2018	1226																																				
ME1801057019	GWC12	21-Aug-2018	1300	7.84	<0.001	8.70	500	37	<1	102	0.018			1310	<1	4.19	8.06	0.004	15	0.154	<0.001	0.020		7.5	12	<0.01	210	1.01	36	18.5		500	13.6	12.5	672		0.025		
ME1801057020	GWA14	21-Aug-2018	1312																																				
ME1801057021	GWC14	21-Aug-2018	1329	0.21	<0.001	6.17	475	38	<1	80	0.004			1090	<1	7.84	1.26	0.010	15	0.034	<0.001	<0.001		7.5	13	<0.01	152	0.926	2	18.0		475	11.8	10.1	588		0.016		
ME1801057022	GWA15	21-Aug-2018	1340																																				
ME1801057023	GWC15	21-Aug-2018	1400	0.19	<0.001	0.544	585	51	<1	211	0.010			1710	<1	5.72	0.86	0.002	27	0.041	<0.001	<0.001		7.0	17	<0.01	260	0.784	42	17.5		585	18.5	16.5	893		0.010		
ME1801057024	GWC25	17-Aug-2018	1210	0.56	0.003	0.070	444	20	<1	276	0.037			1700	<1	3.25	1.47	0.012	76	0.432	<0.001	0.078		7.4	6	<0.01	215	0.351	59	18.0		444	17.9	16.8	888		0.014		
ME1801057025	GWC19	08-Aug-2018	0851																																				
ME1801057026	GWC35	17-Aug-2018	1128	0.21	0.002	0.200	276	44	<1	60	0.012			749	<1	4.53	2.50	0.002	25	0.564	0.002	0.041		7.2	19	<0.01	52	0.386	30	19.5		276	7.83	7.16	400		0.016		
ME1801057027	GWC33	09-Aug-2018	1118	0.81	<0.001	0.497	<1	509	20	127	0.006			5760	1080	3.90	1.49	0.004	<1	0.047	0.002	0.004		12.6	20	<0.01	49	0.327	18	19.0		1100	25.9	28.0	1240		0.055		
ME1801057028	GWC26	09-Aug-2018	1204	0.30	<0.001	0.253	416	48	<1	163	0.005			1270	<1	8.39	1.36	0.002	21	0.070	<0.001	0.003		7.3	14	<0.01	164	0.469	40	19.0		416	13.7	11.6	602		0.024		
ME1801057029	GWC18	08-Aug-2018	0851																																				
ME1801057030	GWC17	17-Aug-2018	1408	0.40	<0.001	0.095	476	110	<1	295	<0.001			2040	<1	7.44	11.4	0.003	56	0.070	0.029	<0.001		7.1	25	<0.01	221	1.23	278	20.0		476	23.6	20.4	1220		0.012		
ME1801057031	GWC16	09-Aug-2018	1312	0.40	<0.001	0.288	633	61	<1	309	0.008			2110	<1	5.41	8.92	0.008	31	0.053	<0.001	0.003		7.4	19	<0.01	334	0.715	77	18.5		633	23.0	20.6	1200		0.030		
ME1801057032	GWC28	16-Aug-2018	1056	0.09	<0.001	0.070	760	141	<1	489	0.031			3120	<1	5.16	1.69	<0.001	79	0.050	0.001	0.006		6.8	37	<0.01	415	2.15	341	20.0		760	36.1	32.5	1930		0.026		
ME1801057033	GWC29	16-Aug-2018	1134	0.27	<0.001	0.116	686	113	<1	287	0.021			2230	<1	8.37	1.84	0.002	88	0.051	0.006	0.021		6.9	31	<0.01	226	1.23	288	20.0		686	27.8	23.5	1460		0.020		
ME1801057034	GWC30	16-Aug-2018	1205	0.08	<0.001	0.064	593	215	<1	579	0.003			3030	<1	6.34	3.81	<0.001	147	0.126	<0.001	0.003		6.8	41	<0.01	171	2.48	354	19.0		593	35.6	31.3	2010		0.010		
ME1801057035	GWC31	16-Aug-2018	1359																																				
ME1801057036	GWC24	16-Aug-2018	1435	1.10	0.002	0.047	48	105	<1	586	0.007			3560	<1	6.72	89.3	0.002	152	8.00	<0.001	0.187		5.9	65	<0.01	336	0.827	1300	19.5		48	44.6	39.0	2680		0.098		
ME1801057037	GWC27	16-Aug-2018	1516	1.80	0.009	0.086	14	28	<1	365	0.199			1750	<1	9.21	13.3	0.016	37	3.92	<0.001	0.088		5.3	32	<0.01	201	0.174	354	16.5		14	17.9	14.9	1090		0.494		
ME1801057038	GWC32	09-Aug-2018	1444	0.08	<0.001	0.047	1280	144	<1	330	0.015	</																											

Sample Number	Sample Location	Sampling Date	Sampling Time	Aluminium mg/L	Arsenic mg/L	Barium mg/L	Bicarbonate Alkalinity as CaCO3 mg/L	Calcium - Dissolved mg/L	Carbonate Alkalinity as CaCO3 mg/L	Chloride mg/L	Copper mg/L	Depth to Standpipe m	Depth of Dry Bore to Standpipe m	Electrical Conductivity @ 25° C µS/cm (Field)	Hydroxide Alkalinity as CaCO3 mg/L	Ionic Balance %	Iron mg/L	Lead mg/L	Magnesium - Dissolved mg/L	Manganese mg/L	Molybdenum mg/L	Nickel mg/L	No Sample	pH - pH Unit (Field)	Potassium - Dissolved mg/L	Selenium mg/L	Sodium - Dissolved mg/L	Strontium mg/L	Sulphate mg/L	Temperature °C	Temperature - Client Supplied °C	Total Alkalinity as CaCO3 mg/L	Total Anions meq/L	Total Cations meq/L	Total Dissolved Solids @ 180° C - Dissolved mg/L	Turbidity NTU	Zinc mg/L		
ME1801057045	PZ13	09-Aug-2018	1047																																				
ME1801057046	PZ20	17-Aug-2018	1315																																				
ME1801057047	PZ21	17-Aug-2018	1306	44.9	0.031	0.295	531	22	<1	60	0.073			1800	<1	6.18	59.8	0.061	30	2.03	0.008	0.082		7.8	10	<0.01	327	0.652	390	16.0		531	20.4	18.0	1420		0.432		
ME1801057048	PZ26	17-Aug-2018	1248																																				
ME1801126001	GWA1	09-Aug-2018	1223										4.950																										
ME1801126002	GWA2	22-Aug-2018	1126									4.590																											
ME1801126003	GWA3	22-Aug-2018	1219										5.610																										
ME1801126004	GWA4	22-Aug-2018	1205										4.885																										
ME1801126005	GWA5	08-Aug-2018	1426										4.440																										
ME1801126006	GWA6	22-Aug-2018	1245										2.890																										
ME1801126007	GWA7	22-Aug-2018	1318										5.190																										
ME1801126008	GWA8	16-Aug-2018	1232										1.565																										
ME1801126009	GWC1	22-Aug-2018	1138										11.310																										
ME1801126010	GWC2	22-Aug-2018	1222										15.470																										
ME1801126011	GWC3	22-Aug-2018	1251										15.110																										
ME1801126012	GWC4	22-Aug-2018	1345										15.275																										
ME1801126013	GWC5	16-Aug-2018	1249										6.020																										
ME1801126014	GWA10	21-Aug-2018	1050										4.610																										
ME1801126015	GWC10	21-Aug-2018	1117										5.370																										
ME1801126016	GWA11	21-Aug-2018	1142										3.510																										
ME1801126017	GWC11	21-Aug-2018	1156										15.600																										
ME1801126018	GWA12	21-Aug-2018	1226										5.800																										
ME1801126019	GWC12	21-Aug-2018	1249										35.800																										
ME1801126020	GWA14	21-Aug-2018	1312										4.960																										
ME1801126021	GWC14	21-Aug-2018	1318										22.890																										
ME1801126022	GWA15	21-Aug-2018	1340										3.630																										
ME1801126023	GWC15	21-Aug-2018	1347										27.860																										
ME1801126024	GWC25	17-Aug-2018	1157										29.200																										
ME1801126025	GWC19	08-Aug-2018	1037																																				
ME1801126026	GWC35	17-Aug-2018	1109										45.720																										
ME1801126027	GWC33	09-Aug-2018	1122										41.450																										
ME1801126028	GWC26	09-Aug-2018	1152										40.070																										
ME1801126029	GWC18	08-Aug-2018	1037																																				
ME1801126030	GWC17	17-Aug-2018	1352										43.760																										
ME1801126031	GWC16	09-Aug-2018	1258										29.575																										
ME1801126032	GWC28	16-Aug-2018	1044										43.640																										
ME1801126033	GWC29	16-Aug-2018	1116										43.960																										
ME1801126034	GWC30	16-Aug-2018	1152										32.950																										
ME1801126035	GWC31	16-Aug-2018	1359										50.980																										
ME1801126036	GWC24	16-Aug-2018	1415										22.990																										
ME1801126037	GWC27	16-Aug-2018	1459										15.990																										
ME1801126038	GWC32	09-Aug-2018	1433										4.190																										
ME1801126039	GWA32	09-Aug-2018	1422										1.905																										
ME1801126040	GWA34	16-Aug-2018	1310										4.540																										
ME1801126041	GWC34	16-Aug-2018	1329										20.330																										
ME1801126042	GWA36	09-Aug-2018	1335										5.940																										
ME1801126043	GWC36	09-Aug-2018	1340										15.785																										
ME1801126044	GWA16	09-Aug-2018	1322										4.070																										
ME1801126045	PZ13	09-Aug-2018	1047										2.330																										
ME1801126046	PZ20	17-Aug-2018	1315										4.160																										

Sample Number	Sample Location	Sampling Date	Sampling Time	Aluminium mg/L	Arsenic mg/L	Barium mg/L	Bicarbonate Alkalinity as CaCO3 mg/L	Calcium - Dissolved mg/L	Carbonate Alkalinity as CaCO3 mg/L	Chloride mg/L	Copper mg/L	Depth to Standpipe m	Depth of Dry Bore to Standpipe m	Electrical Conductivity @ 25° C µS/cm (Field)	Hydroxide Alkalinity as CaCO3 mg/L	Ionic Balance %	Iron mg/L	Lead mg/L	Magnesium - Dissolved mg/L	Manganese mg/L	Molybdenum mg/L	Nickel mg/L	No Sample	pH - pH Unit (Field)	Potassium - Dissolved mg/L	Selenium mg/L	Sodium - Dissolved mg/L	Strontium mg/L	Sulphate mg/L	Temperature °C	Temperature - Client Supplied °C	Total Alkalinity as CaCO3 mg/L	Total Anions meq/L	Total Cations meq/L	Total Dissolved Solids @ 180° C - Dissolved mg/L	Turbidity NTU	Zinc mg/L		
ME1801126047	PZ21	17-Aug-2018	1258									4.670																											
ME1801126048	PZ26	17-Aug-2018	1248										4.350																										
ME1801126049	Barologger Office	21-Aug-2018	1022																																				
ME1801228001	GWA1	14-Sep-2018	1228																																				
ME1801228002	GWA2	26-Sep-2018	1047	1.86	0.024	0.116	150	26	<1	324	0.006			1320	<1	2.54	37.6	0.003	37	1.95	<0.001	0.010		7.0	7	<0.01	194	0.348	72	15.0		150	13.6	13.0	927		0.013		
ME1801228003	GWA3	26-Sep-2018	1143																																				
ME1801228004	GWA4	26-Sep-2018	1126																																				
ME1801228005	GWA5	18-Sep-2018	1545																																				
ME1801228006	GWA6	26-Sep-2018	1230																																				
ME1801228007	GWA7	26-Sep-2018	1245																																				
ME1801228008	GWA8	26-Sep-2018	1343	0.27	<0.001	0.065	240	100	<1	334	0.002			2020	<1	0.92	0.71	0.004	94	17.3	<0.001	0.008		7.1	11	<0.01	215	1.04	411	15.0		240	22.8	22.4	1080		0.013		
ME1801228009	GWC1	26-Sep-2018	1101	0.19	0.002	0.284	542	182	<1	636	0.002			3510	<1	2.05	3.37	0.001	116	0.739	<0.001	0.005		7.1	29	<0.01	531	1.75	576	17.0		542	40.8	42.5	1980		0.014		
ME1801228010	GWC2	26-Sep-2018	1153	0.40	<0.001	0.397	512	71	<1	110	0.002			1230	<1	0.92	1.54	<0.001	29	0.068	<0.001	0.002		7.2	27	<0.01	160	0.634	24	18.5		512	13.8	13.6	758		0.014		
ME1801228011	GWC3	26-Sep-2018	1221	12.4	0.180	0.397	626	170	<1	700	0.045			4290	<1	0.46	380	0.042	144	0.576	0.006	0.037		6.9	44	0.01	666	1.80	851	18.0		626	50.0	50.4	2720		0.153		
ME1801228012	GWC4	26-Sep-2018	1322	0.23	<0.001	0.092	610	175	<1	349	0.004			2300	<1	1.52	5.63	0.002	80	0.052	<0.001	0.002		6.7	52	<0.01	221	1.89	242	18.5		610	27.1	26.2	1510		0.026		
ME1801228013	GWC5	26-Sep-2018	1406	0.04	<0.001	0.210	2210	334	<1	532	0.002			5300	<1	6.08	0.90	0.004	160	1.50	<0.001	0.027		6.7	91	<0.01	979	8.13	337	17.0		2210	66.2	74.7	2980		0.014		
ME1801228014	GWA10	25-Sep-2018	1100	5.68	0.007	0.053	429	124	<1	673	0.006			3220	<1	3.20	6.23	0.002	127	1.99	0.001	0.009		7.1	2	<0.01	455	1.14	320	16.0		429	34.2	36.5	1720		0.008		
ME1801228015	GWC10	25-Sep-2018	1116	0.33	<0.001	0.045	337	221	<1	407	0.044			3690	<1	4.38	2.82	0.002	136	0.173	0.002	0.016		7.4	37	<0.01	541	2.15	1180	17.0		337	42.8	46.7	2450		<0.005		
ME1801228016	GWA11	25-Sep-2018	1129	0.77	<0.001	0.029	609	26	<1	63	0.002			1610	<1	3.68	1.01	<0.001	27	0.281	<0.001	0.002		7.7	11	<0.01	300	0.461	82	16.0		609	15.6	16.8	1000		0.007		
ME1801228017	GWC11	25-Sep-2018	1149	1.06	<0.001	0.040	263	171	<1	357	0.005			3810	<1	3.39	15.7	0.003	172	2.13	<0.001	0.012		6.5	39	<0.01	560	1.56	1420	18.5		263	44.9	48.0	2810		0.034		
ME1801228018	GWA12	25-Sep-2018	1200																																				
ME1801228019	GWC12	25-Sep-2018	1222	1.48	<0.001	0.855	438	41	<1	105	0.006			1270	<1	8.09	1.99	0.002	17	0.091	<0.001	0.006		7.5	18	<0.01	250	0.466	41	19.5		438	12.6	14.8	718		0.013		
ME1801228020	GWA14	25-Sep-2018	1239																																				
ME1801228021	GWC14	25-Sep-2018	1255	0.18	<0.001	2.38	325	32	<1	60	0.004			940	<1	6.22	0.74	0.008	13	0.033	0.003	0.004		7.7	15	<0.01	149	0.525	11	19.0		325	8.42	9.53	504		0.029		
ME1801228022	GWA15	25-Sep-2018	1318																																				
ME1801228023	GWC15	25-Sep-2018	1337	0.15	<0.001	0.276	555	47	<1	212	0.004			1720	<1	5.50	0.37	0.001	26	0.050	<0.001	0.001		7.0	24	<0.01	346	0.648	47	18.5		555	18.0	20.1	942		<0.005		
ME1801228024	GWC25	21-Sep-2018	1221	0.30	0.001	0.051	412	20	<1	283	0.014			1670	<1	0.07	0.30	0.003	77	0.071	0.002	0.079		7.4	6	<0.01	223	0.330	48	19.0		412	17.2	17.2	860		<0.005		
ME1801228025	GWC19	14-Sep-2018	1016																																				
ME1801228026	GWC35	21-Sep-2018	1146	0.38	0.001	0.209	274	53	<1	69	0.004			791	<1	0.79	2.02	<0.001	29	0.602	0.002	0.044		7.2	20	<0.01	60	0.427	29	21.5		274	8.02	8.15	411		<0.005		
ME1801228027	GWC33	14-Sep-2018	1214	0.44	<0.001	0.315	<1	466	49	146	0.003			5530	922	3.31	0.51	0.002	<1	0.021	0.001	0.003		12.4	15	<0.01	44	0.313	19	21.0		971	23.9	25.6	1030		0.013		
ME1801228028	GWC26	14-Sep-2018	1252	0.58	<0.001	0.342	408	44	<1	159	0.008			1320	<1	5.26	1.26	0.004	21	0.070	0.001	0.002		7.3	12	<0.01	178	0.570	32	20.0		408	13.3	12.0	662		0.035		
ME1801228029	GWC18	14-Sep-2018	1016																																				
ME1801228030	GWC17	14-Sep-2018	1137	0.08	<0.001	0.142	470	109	<1	343	<0.001			2150	<1	8.40	44.0	0.002	56	0.063	0.041	<0.001		7.0	24	<0.01	213	1.28	217	22.0		470	23.6	19.9	1040		<0.005		
ME1801228031	GWC16	14-Sep-2018	1355	0.16	<0.001	0.179	629	60	<1	309	0.006			2150	<1	5.41	5.58	0.002	30	0.034	0.001	<0.001		7.2	18	<0.01	333	0.710	70	20.5		629	22.7	20.4	1060		0.007		
ME1801228032	GWC28	20-Sep-2018	1358	0.05	<0.001	0.078	691	150	<1	489	0.016			3030	<1	1.59	1.15	<0.001	79	0.046	0.003	0.008		6.8	38	<0.01	443	2.13	267	19.5		691	33.2	34.2	1640		0.010		
ME1801228033	GWC29	20-Sep-2018	1438	0.08	<0.001	0.074	604	116	<1	294	0.006			2180	<1	0.51	1.36	<0.001	88	0.035	0.003	0.008		6.8	32	<0.01	244	1.01	209	19.0		604	24.7	24.5	1490		<0.005		
ME1801228034	GWC30	21-Sep-2018	1506	0.07	<0.001	0.062	555	242	<1	609	0.003			3040	<1	0.27	2.46	<0.001	159	0.135	<0.001	0.005		6.8	46	<0.01	185	2.45	285	20.0		555	34.2	34.4	1940		<0.005		
ME1801228035	GWC31	26-Sep-2018	1430																																				
ME1801228036	GWC24	26-Sep-2018	1510	0.80	0.001	0.058	<1	107	<1	590	0.005			3450	<1	2.07	55.3	0.005	161	7.88	<0.001	0.270		3.7	73	<0.01	379	0.822	1050	18.5		<1	38.5	36.9	2480		0.337		
ME1801228037	GWC27	26-Sep-2018	1545	0.95	0.004	0.062	3	30	<1	383	0.026			1700	<1	2.34	2.31	0.011	39	4.03	<0.001	0.062		4.8	38	<0.01	253	0.182	318	17.5		3	17.5	16.7	1000		0.676		
ME1801228038	GWC32	25-Sep-2018	1440	0.09	<0.001	0.053	1190	144	<1	332	0.010			3380	<1	3.43	1.88	0.002	110	0.064	<0.001	0.002		6.8	48	<0.01	553	4.87	270	18.0		1190	38.8	41.5	1930		0.008		
ME1801228039	GWA32	25-Sep-2018	1426	0.19	<0.001	0.052	342	147	<1	546	0.002			3290	<1	5.18	0.07	<0.001	171	0.106	<0.001	0.001		7.3	23	<0.01	415	1.91	666	14.0		342	36.1						

Sample Number	Sample Location	Sampling Date	Sampling Time	Aluminium mg/L	Arsenic mg/L	Barium mg/L	Bicarbonate Alkalinity as CaCO3 mg/L	Calcium - Dissolved mg/L	Carbonate Alkalinity as CaCO3 mg/L	Chloride mg/L	Copper mg/L	Depth to Standpipe m	Depth of Dry Bore to Standpipe m	Electrical Conductivity @ 25° C µS/cm (Field)	Hydroxide Alkalinity as CaCO3 mg/L	Ionic Balance %	Iron mg/L	Lead mg/L	Magnesium - Dissolved mg/L	Manganese mg/L	Molybdenum mg/L	Nickel mg/L	No Sample	pH - pH Unit (Field)	Potassium - Dissolved mg/L	Selenium mg/L	Sodium - Dissolved mg/L	Strontium mg/L	Sulphate mg/L	Temperature °C	Temperature - Client Supplied °C	Total Alkalinity as CaCO3 mg/L	Total Anions meq/L	Total Cations meq/L	Total Dissolved Solids @ 180° C - Dissolved mg/L	Turbidity NTU	Zinc mg/L		
ME1801228048	PZ26	21-Sep-2018	1316																																				
ME1801355001	GWA1	14-Sep-2018	1228									4.950																											
ME1801355002	GWA2	26-Sep-2018	1042										4.610																										
ME1801355003	GWA3	26-Sep-2018	1143									5.610																											
ME1801355004	GWA4	26-Sep-2018	1126									5.170																											
ME1801355005	GWA5	18-Sep-2018	1542									4.100																											
ME1801355006	GWA6	26-Sep-2018	1230									2.890																											
ME1801355007	GWA7	26-Sep-2018	1245									5.190																											
ME1801355008	GWA8	26-Sep-2018	1338										1.540																										
ME1801355009	GWC1	26-Sep-2018	1051										11.170																										
ME1801355010	GWC2	26-Sep-2018	1146										15.450																										
ME1801355011	GWC3	26-Sep-2018	1213										15.060																										
ME1801355012	GWC4	26-Sep-2018	1310										15.340																										
ME1801355013	GWC5	26-Sep-2018	1401										6.130																										
ME1801355014	GWA10	25-Sep-2018	1053										4.545																										
ME1801355015	GWC10	25-Sep-2018	1108										5.345																										
ME1801355016	GWA11	25-Sep-2018	1123										3.460																										
ME1801355017	GWC11	25-Sep-2018	1139										15.545																										
ME1801355018	GWA12	25-Sep-2018	1200									5.800																											
ME1801355019	GWC12	25-Sep-2018	1207										35.240																										
ME1801355020	GWA14	25-Sep-2018	1239									4.970																											
ME1801355021	GWC14	25-Sep-2018	1245										31.310																										
ME1801355022	GWA15	25-Sep-2018	1318									3.600																											
ME1801355023	GWC15	25-Sep-2018	1326										27.390																										
ME1801355024	GWC25	21-Sep-2018	1209										29.390																										
ME1801355025	GWC19	14-Sep-2018	0915																																				
ME1801355026	GWC35	21-Sep-2018	1133										46.395																										
ME1801355027	GWC33	14-Sep-2018	1157										41.730																										
ME1801355028	GWC26	14-Sep-2018	1240										40.460																										
ME1801355029	GWC18	14-Sep-2018	0915																																				
ME1801355030	GWC17	14-Sep-2018	1124										43.990																										
ME1801355031	GWC16	14-Sep-2018	1342										31.110																										
ME1801355032	GWC28	20-Sep-2018	1343										43.260																										
ME1801355033	GWC29	20-Sep-2018	1420										43.870																										
ME1801355034	GWC30	21-Sep-2018	1455										32.775																										
ME1801355035	GWC31	26-Sep-2018	1430									51.100																											
ME1801355036	GWC24	26-Sep-2018	1452										23.055																										
ME1801355037	GWC27	26-Sep-2018	1534										16.125																										
ME1801355038	GWC32	25-Sep-2018	1433										4.220																										
ME1801355039	GWA32	25-Sep-2018	1416										1.980																										
ME1801355040	GWA34	25-Sep-2018	1457										4.555																										
ME1801355041	GWC34	25-Sep-2018	1511										20.135																										
ME1801355042	GWA36	14-Sep-2018	1422									5.940																											
ME1801355043	GWC36	14-Sep-2018	1427										15.785																										
ME1801355044	GWA16	14-Sep-2018	1405									4.070																											
ME1801355045	PZ13	14-Sep-2018	1032										2.330																										
ME1801355046	PZ20	21-Sep-2018	1334										2.940																										
ME1801355047	PZ21	21-Sep-2018	1322										3.940																										
ME1801355048	PZ26	21-Sep-2018	1316																																				
ME1801355049	Barologger Office	26-Sep-2018	1016																																				

Sample Number	Sample Location	Sampling Date	Sampling Time	Aluminium mg/L	Arsenic mg/L	Barium mg/L	Bicarbonate Alkalinity as CaCO3 mg/L	Calcium - Dissolved mg/L	Carbonate Alkalinity as CaCO3 mg/L	Chloride mg/L	Copper mg/L	Depth to Standpipe m	Depth of Dry Bore to Standpipe m	Electrical Conductivity @ 25° C µS/cm (Field)	Hydroxide Alkalinity as CaCO3 mg/L	Ionic Balance %	Iron mg/L	Lead mg/L	Magnesium - Dissolved mg/L	Manganese mg/L	Molybdenum mg/L	Nickel mg/L	No Sample	pH - pH Unit (Field)	Potassium - Dissolved mg/L	Selenium mg/L	Sodium - Dissolved mg/L	Strontium mg/L	Sulphate mg/L	Temperature °C	Temperature - Client Supplied °C	Total Alkalinity as CaCO3 mg/L	Total Anions meq/L	Total Cations meq/L	Total Dissolved Solids @ 180° C - Dissolved mg/L	Turbidity NTU	Zinc mg/L		
ME1801364001	GWA1	19-Oct-2018	1325																																				
ME1801364002	GWA2	31-Oct-2018	1240	7.69	0.086	0.305	159	26	<1	342	0.027			1370	<1	9.22	173	0.016	36	6.02	<0.001	0.033		7.0	6	<0.01	171	0.433	69	19.5		159	14.3	11.8	880		0.046		
ME1801364003	GWA3	31-Oct-2018	1337																																				
ME1801364004	GWA4	31-Oct-2018	1321																																				
ME1801364005	GWA5	17-Oct-2018	1558	1.20	0.018	0.217	406	588	<1	3230	0.008			14800	<1	0.83	1.73	0.004	911	0.115	0.004	0.017		7.7	30	<0.01	1970	6.85	4550	17.5		406	194	191	12900		0.065		
ME1801364006	GWA6	31-Oct-2018	1421																																				
ME1801364007	GWA7	31-Oct-2018	1441																																				
ME1801364008	GWA8	26-Oct-2018	1324	0.23	<0.001	0.060	250	107	<1	368	0.002			2130	<1	4.24	0.54	0.002	101	17.3	<0.001	0.010		7.1	11	<0.01	215	1.22	479	16.5		250	25.3	23.3	1540		0.010		
ME1801364009	GWC1	31-Oct-2018	1256	0.49	0.006	0.181	502	158	<1	657	0.005			3530	<1	3.00	8.09	0.002	103	0.821	<0.001	0.006		7.2	26	<0.01	465	1.83	528	19.0		502	39.6	37.2	2380		0.019		
ME1801364010	GWC2	31-Oct-2018	1349	2.38	<0.001	0.442	471	70	<1	108	0.005			1210	<1	0.83	3.34	0.002	27	0.089	<0.001	0.006		7.2	24	<0.01	147	0.641	23	20.0		471	12.9	12.7	702		0.035		
ME1801364011	GWC3	31-Oct-2018	1415																																				
ME1801364012	GWC4	26-Oct-2018	1349	0.16	<0.001	0.095	671	174	<1	362	0.003			2330	<1	4.90	4.89	0.002	80	0.172	<0.001	0.002		6.7	49	<0.01	217	2.08	241	20.5		671	28.6	26.0	1380		0.016		
ME1801364013	GWC5	26-Oct-2018	1302	0.06	<0.001	0.214	2150	214	<1	558	0.002			5270	<1	16.8	0.51	0.003	102	1.54	<0.001	0.028		6.6	58	<0.01	603	8.29	334	17.5		2150	65.6	46.8	3580		0.017		
ME1801364014	GWA10	25-Oct-2018	1101	3.62	0.007	0.048	467	120	<1	720	0.004			3290	<1	3.01	6.30	0.001	125	1.97	<0.001	0.009		7.1	1	<0.01	425	1.15	351	16.5		467	36.9	34.8	2080		0.014		
ME1801364015	GWC10	25-Oct-2018	1133	0.21	<0.001	0.045	386	233	<1	429	0.042			3800	<1	4.33	1.17	0.001	129	0.105	0.003	0.011		7.4	31	<0.01	487	2.32	996	18.0		386	40.6	44.2	2840		0.008		
ME1801364016	GWA11	25-Oct-2018	1155	7.63	0.001	0.049	605	25	<1	67	0.015			1560	<1	3.23	5.48	0.006	26	0.318	<0.001	0.011		7.8	12	<0.01	311	0.427	104	17.0		605	16.1	17.2	967		0.022		
ME1801364017	GWC11	25-Oct-2018	1220	2.00	<0.001	0.057	318	165	<1	372	0.012			3850	<1	2.06	17.3	0.004	167	2.24	<0.001	0.013		6.5	33	<0.01	513	1.64	1450	19.5		318	47.0	45.1	2910		0.045		
ME1801364018	GWA12	25-Oct-2018	1240																																				
ME1801364019	GWC12	25-Oct-2018	1314	3.11	<0.001	2.86	524	38	<1	120	0.013			1400	<1	0.59	4.45	0.005	17	0.081	<0.001	0.010		7.5	16	<0.01	249	0.549	41	21.5		524	14.7	14.5	833		0.022		
ME1801364020	GWA14	25-Oct-2018	1323																																				
ME1801364021	GWC14	25-Oct-2018	1344																																				
ME1801364022	GWA15	25-Oct-2018	1355																																				
ME1801364023	GWC15	25-Oct-2018	1420	0.39	<0.001	0.672	592	56	<1	207	0.019			1640	<1	3.88	2.44	0.004	27	0.108	<0.001	0.002		7.1	21	<0.01	261	0.733	29	19.5		592	18.3	16.9	940		0.015		
ME1801364024	GWC25	22-Oct-2018	1117	0.69	0.002	0.048	478	21	<1	294	0.017			1680	<1	2.03	0.47	0.005	84	0.160	<0.001	0.081		7.6	7	<0.01	232	0.353	55	21.0		478	19.0	18.2	1080		0.014		
ME1801364025	GWC19	15-Oct-2018	1500																																				
ME1801364026	GWC35	26-Oct-2018	1053	3.30	0.011	0.740	352	63	<1	74	0.216			1010	<1	0.94	16.9	0.022	37	1.49	0.007	0.092		7.4	26	<0.01	82	0.590	72	21.5		352	10.6	10.4	618		0.070		
ME1801364027	GWC33	19-Oct-2018	1501	0.62	<0.001	0.307	<1	437	76	171	0.006			5320	1150	9.45	0.57	0.002	<1	0.022	0.002	0.004		12.4	19	<0.01	52	0.306	23	21.5		1220	29.7	24.6	1350		0.062		
ME1801364028	GWC26	19-Oct-2018	1356	0.32	<0.001	0.193	453	51	<1	184	0.007			1270	<1	8.25	1.12	0.001	24	0.076	<0.001	0.002		7.2	16	<0.01	180	0.446	39	21.0		453	15.0	12.8	670		0.035		
ME1801364029	GWC18	15-Oct-2018	1500																																				
ME1801364030	GWC17	19-Oct-2018	1307																																				
ME1801364031	GWC16	22-Oct-2018	1400	0.25	<0.001	0.226	636	54	<1	272	0.014			1940	<1	1.35	5.25	0.003	27	0.033	<0.001	0.002		7.2	19	<0.01	357	0.588	54	20.5		636	21.5	20.9	1300		0.018		
ME1801364032	GWC28	25-Oct-2018	1503	0.13	<0.001	0.155	814	152	<1	531	0.028			3280	<1	2.50	1.88	0.002	90	0.052	<0.001	0.004		6.8	39	<0.01	465	2.33	328	21.0		814	38.1	36.2	1820		0.024		
ME1801364033	GWC29	26-Oct-2018	1507	0.37	<0.001	0.132	651	112	<1	302	0.024			2220	<1	2.57	2.10	0.002	93	0.047	0.003	0.010		6.9	33	<0.01	244	1.13	215	21.5		651	26.0	24.7	1300		0.011		
ME1801364034	GWC30	26-Oct-2018	1431	0.18	<0.001	0.097	603	238	<1	610	0.007			2970	<1	2.39	3.67	0.001	156	0.172	<0.001	0.004		6.8	45	<0.01	183	2.57	299	20.0		603	35.5	33.8	2200		0.021		
ME1801364035	GWC31	15-Oct-2018	1336																																				
ME1801364036	GWC24	15-Oct-2018	1424	4.78	<0.001	0.038	<1	101	<1	627	0.006			3510	<1	11.9	63.7	0.003	150	7.63	<0.001	0.253		4.1	63	<0.01	332	0.817	1190	20.5		<1	42.5	33.4	2560		0.271		
ME1801364037	GWC27	15-Oct-2018	1506	1.45	0.017	0.074	15	28	<1	377	0.121			1680	<1	10.9	19.6	0.023	39	3.84	<0.001	0.112		5.4	32	<0.01	197	0.168	311	18.5		15	17.4	14.0	1010		0.415		
ME1801364038	GWC32	15-Oct-2018	1225	0.10	<0.001	0.052	1290	139	<1	370	0.012			3380	<1	4.32	1.64	0.002	104	0.066	<0.001	0.002		6.8	40	<0.01	511	4.62	290	19.5		1290	42.2	38.7	2020		0.012		
ME1801364039	GWA32	15-Oct-2018	1207	0.18	<0.001	0.048	403	146	<1	596	0.002			3460	<1	0.98	0.13	<0.001	164	0.106	0.001	0.002		7.3	20	<0.01	378	2.18	654	16.0		403	38.5	37.7	2380		0.007		
ME1801364040	GWA34	15-Oct-2018	1256	23.3	0.001	0.013	<1	459	<1	392	0.011			6060	<1	6.99	117	0.002	495	12.5	<0.001	1.07		4.4	5	0.01	386	0.755	3920	18.5		<1	92.7	80.6	7040		2.82		
ME1801364041	GWC34	15-Oct-2018	1306																																				
ME1801364042	GWA36	22-Oct-2018	1427																																				
ME1801364043	GWC36	22-Oct-2018	1445	0.88	<0.001	0.046</																																	

Sample Number	Sample Location	Sampling Date	Sampling Time	Aluminium mg/L	Arsenic mg/L	Barium mg/L	Bicarbonate Alkalinity as CaCO3 mg/L	Calcium - Dissolved mg/L	Carbonate Alkalinity as CaCO3 mg/L	Chloride mg/L	Copper mg/L	Depth to Standpipe m	Depth of Dry Bore to Standpipe m	Electrical Conductivity @ 25° C µS/cm (Field)	Hydroxide Alkalinity as CaCO3 mg/L	Ionic Balance %	Iron mg/L	Lead mg/L	Magnesium - Dissolved mg/L	Manganese mg/L	Molybdenum mg/L	Nickel mg/L	No Sample	pH - pH Unit (Field)	Potassium - Dissolved mg/L	Selenium mg/L	Sodium - Dissolved mg/L	Strontium mg/L	Sulphate mg/L	Temperature °C	Temperature - Client Supplied °C	Total Alkalinity as CaCO3 mg/L	Total Anions meq/L	Total Cations meq/L	Total Dissolved Solids @ 180° C - Dissolved mg/L	Turbidity NTU	Zinc mg/L			
ME1801452003	GWA3	31-Oct-2018	1337									5.610																												
ME1801452004	GWA4	31-Oct-2018	1319									4.880																												
ME1801452005	GWA5	17-Oct-2018	1548									3.905																												
ME1801452006	GWA6	31-Oct-2018	1421									2.910																												
ME1801452007	GWA7	31-Oct-2018	1436									4.890																												
ME1801452008	GWA8	26-Oct-2018	1317									1.555																												
ME1801452009	GWC1	31-Oct-2018	1248									11.210																												
ME1801452010	GWC2	31-Oct-2018	1342									15.685																												
ME1801452011	GWC3	31-Oct-2018	1403									15.275																												
ME1801452012	GWC4	26-Oct-2018	1340									15.375																												
ME1801452013	GWC5	26-Oct-2018	1254									5.560																												
ME1801452014	GWA10	25-Oct-2018	1052									4.480																												
ME1801452015	GWC10	25-Oct-2018	1118									5.350																												
ME1801452016	GWA11	25-Oct-2018	1141									3.420																												
ME1801452017	GWC11	25-Oct-2018	1207									15.600																												
ME1801452018	GWA12	25-Oct-2018	1240									5.800																												
ME1801452019	GWC12	25-Oct-2018	1252									36.170																												
ME1801452020	GWA14	25-Oct-2018	1323									4.965																												
ME1801452021	GWC14	25-Oct-2018	1330									32.850																												
ME1801452022	GWA15	25-Oct-2018	1355									3.575																												
ME1801452023	GWC15	25-Oct-2018	1409									29.095																												
ME1801452024	GWC25	22-Oct-2018	1058									29.405																												
ME1801452025	GWC19	15-Oct-2018	1500									46.915																												
ME1801452026	GWC35	26-Oct-2018	1039									42.010																												
ME1801452027	GWC33	19-Oct-2018	1441									40.700																												
ME1801452028	GWC26	19-Oct-2018	1341									51.030																												
ME1801452029	GWC18	15-Oct-2018	1500									23.160																												
ME1801452030	GWC17	26-Oct-2018	1155									16.155																												
ME1801452031	GWC16	22-Oct-2018	1350									4.250																												
ME1801452032	GWC28	25-Oct-2018	1450									2.000																												
ME1801452033	GWC29	26-Oct-2018	1450									4.540																												
ME1801452034	GWC30	26-Oct-2018	1417									20.445																												
ME1801452035	GWC31	15-Oct-2018	1336									5.940																												
ME1801452036	GWC24	15-Oct-2018	1406									15.805																												
ME1801452037	GWC27	15-Oct-2018	1447									4.070																												
ME1801452038	GWC32	15-Oct-2018	1217									2.330																												
ME1801452039	GWA32	15-Oct-2018	1149									1.790																												
ME1801452040	GWA34	15-Oct-2018	1246									3.125																												
ME1801452041	GWC34	15-Oct-2018	1306									4.350																												
ME1801452042	GWA36	22-Oct-2018	1427									1410																												
ME1801452043	GWC36	22-Oct-2018	1431									<1																												
ME1801452044	GWA16	22-Oct-2018	1407									0.36																												
ME1801452045	PZ13	19-Oct-2018	1254									167																												
ME1801452046	PZ20	22-Oct-2018	1225									0.017																												
ME1801452047	PZ21	22-Oct-2018	1210									41																												
ME1801452048	PZ26	22-Oct-2018	1157									4.68																												
ME1801452049	Barologger Office	26-Oct-2018	1006									0.002																												
ME1801515001	GWA1	14-Nov-2018	1049									0.030																												
ME1801515002	GWA2	26-Nov-2018	1227	8.08	0.100	0.280	154	27	<1	317	0.026			1410	<1	0.36	167	0.017	41	4.68	0.002	0.030		7.0	7	<0.01	194	0.453	68	19.5		154	13.4	13.3	873		0.042			
ME1801515003	GWA3	26-Nov-2018	1300																																					

Sample Number	Sample Location	Sampling Date	Sampling Time	Aluminium mg/L	Arsenic mg/L	Barium mg/L	Bicarbonate Alkalinity as CaCO3 mg/L	Calcium - Dissolved mg/L	Carbonate Alkalinity as CaCO3 mg/L	Chloride mg/L	Copper mg/L	Depth to Standpipe m	Depth of Dry Bore to Standpipe m	Electrical Conductivity @ 25° C µS/cm (Field)	Hydroxide Alkalinity as CaCO3 mg/L	Ionic Balance %	Iron mg/L	Lead mg/L	Magnesium - Dissolved mg/L	Manganese mg/L	Molybdenum mg/L	Nickel mg/L	No Sample	pH - pH Unit (Field)	Potassium - Dissolved mg/L	Selenium mg/L	Sodium - Dissolved mg/L	Strontium mg/L	Sulphate mg/L	Temperature °C	Temperature - Client Supplied °C	Total Alkalinity as CaCO3 mg/L	Total Anions meq/L	Total Cations meq/L	Total Dissolved Solids @ 180° C - Dissolved mg/L	Turbidity NTU	Zinc mg/L	
ME1801515004	GWA4	21-Nov-2018	1428																																			
ME1801515005	GWA5	14-Nov-2018	1416	0.48	0.011	0.131	479	612	<1	2950	0.004			14500	<1	1.30	0.98	0.002	877	0.074	0.003	0.013		7.6	33	<0.01	1950	6.84	4830	18.0		479	193	188	12500		0.044	
ME1801515006	GWA6	23-Nov-2018	1208																																			
ME1801515007	GWA7	23-Nov-2018	1225																																			
ME1801515008	GWA8	23-Nov-2018	1414	0.25	<0.001	0.077	224	109	<1	330	0.005			2160	<1	1.18	1.60	<0.001	100	17.6	<0.001	0.009		7.1	10	<0.01	210	1.24	472	18.0		224	23.6	23.0	1480		0.012	
ME1801515009	GWC1	26-Nov-2018	1237	0.12	0.002	0.097	506	148	<1	584	0.002			3600	<1	0.64	3.69	0.001	111	0.866	<0.001	0.006		7.1	28	<0.01	485	1.87	541	19.0		506	37.8	38.3	1800		0.012	
ME1801515010	GWC2	26-Nov-2018	1309	0.54	<0.001	0.436	494	63	<1	108	0.004			1240	<1	1.26	1.80	0.002	30	0.094	<0.001	0.003		7.1	26	<0.01	156	0.666	23	20.0		494	13.4	13.1	769		0.018	
ME1801515011	GWC3	23-Nov-2018	1205																																			
ME1801515012	GWC4	23-Nov-2018	1332	0.28	<0.001	0.093	588	163	<1	324	0.003			2380	<1	1.41	4.67	0.002	81	0.116	<0.001	0.002		6.6	49	<0.01	215	2.14	252	20.0		588	26.1	25.4	1390		0.024	
ME1801515013	GWC5	23-Nov-2018	1429	0.05	<0.001	0.229	2120	294	<1	492	0.005			5410	<1	5.33	0.48	0.004	160	1.66	<0.001	0.032		6.6	90	<0.01	926	8.67	339	17.5		2120	63.3	70.4	3680		0.019	
ME1801515014	GWA10	21-Nov-2018	1115	2.93	0.008	0.058	516	120	<1	640	0.008			3280	<1	2.60	6.94	0.002	127	2.03	<0.001	0.013		7.1	1	<0.01	499	1.15	378	18.5		516	36.2	38.2	1830		0.006	
ME1801515015	GWC10	21-Nov-2018	1134	0.46	<0.001	0.046	404	222	<1	396	0.037			3790	<1	1.74	1.24	0.001	136	0.131	0.003	0.011		7.2	36	<0.01	584	2.34	1330	18.5		404	46.9	48.6	2850		<0.005	
ME1801515016	GWA11	21-Nov-2018	1152	5.81	<0.001	0.047	712	22	<1	73	0.011			1710	<1	5.46	4.36	0.005	26	0.301	<0.001	0.008		7.8	14	<0.01	406	0.480	133	18.0		712	19.0	21.2	1100		0.013	
ME1801515017	GWC11	21-Nov-2018	1211	2.05	<0.001	0.036	336	158	<1	334	0.005			3760	<1	0.86	16.0	0.005	162	2.08	<0.001	0.012		6.5	35	<0.01	575	1.56	1450	20.0		336	46.3	47.1	2860		0.060	
ME1801515018	GWA12	21-Nov-2018	1223																																			
ME1801515019	GWC12	21-Nov-2018	1248	3.32	<0.001	2.06	617	39	<1	108	0.018			1440	<1	2.14	5.54	0.009	18	0.113	<0.001	0.012		7.3	18	<0.01	300	0.576	41	20.5		617	16.2	16.9	826		0.028	
ME1801515020	GWA14	21-Nov-2018	1308																																			
ME1801515021	GWC14	21-Nov-2018	1338	0.33	<0.001	8.92	489	42	<1	71	0.006			1090	<1	4.26	1.85	0.015	19	0.062	<0.001	0.002		7.3	19	<0.01	200	1.01	1	20.0		489	11.8	12.8	583		0.029	
ME1801515022	GWA15	21-Nov-2018	1353																																			
ME1801515023	GWC15	21-Nov-2018	1414	0.46	<0.001	1.06	614	54	<1	187	0.018			1600	<1	1.81	2.90	0.006	27	0.117	<0.001	0.003		7.1	23	<0.01	304	0.768	25	19.5		614	18.1	18.7	922		0.019	
ME1801515024	GWC25	29-Nov-2018	1140	0.52	0.003	0.078	458	20	<1	303	0.030			1680	<1	1.65	1.26	0.010	81	0.315	0.002	0.092		7.1	7	<0.01	243	0.378	64	20.5		458	19.0	18.4	913		0.019	
ME1801515025	GWC19	14-Nov-2018	1500																																			
ME1801515026	GWC35	29-Nov-2018	1043	0.79	0.009	0.381	408	72	<1	113	0.053			1210	<1	0.38	12.7	0.010	43	0.935	0.002	0.028		7.2	26	<0.01	108	0.732	60	21.5		408	12.6	12.5	703		0.025	
ME1801515027	GWC33	19-Nov-2018	1223	0.30	<0.001	0.270	<1	379	28	135	0.002			5220	987	6.82	0.20	<0.001	<1	0.009	0.002	0.002		12.4	20	<0.01	46	0.311	18	22.5		1020	24.6	21.4	1380		0.015	
ME1801515028	GWC26	19-Nov-2018	1302	0.16	<0.001	0.187	362	53	<1	162	0.002			1240	<1	4.10	1.09	<0.001	25	0.072	<0.001	0.002		7.1	19	<0.01	195	0.484	38	21.0		362	12.6	13.7	554		0.015	
ME1801515029	GWC18	14-Nov-2018	1500																																			
ME1801515030	GWC17	14-Nov-2018	1500																																			
ME1801515031	GWC16	19-Nov-2018	1354	0.15	<0.001	0.167	545	60	<1	311	0.002			2080	<1	6.38	4.76	0.002	31	0.035	<0.001	<0.001		7.2	22	<0.01	408	0.715	64	20.5		545	21.0	23.8	1140		0.008	
ME1801515032	GWC28	20-Nov-2018	1147	0.37	<0.001	0.120	750	145	<1	507	0.030			3240	<1	2.68	2.38	0.002	88	0.060	<0.001	0.004		6.8	41	<0.01	514	2.24	318	22.0		750	35.9	37.9	2020		0.023	
ME1801515033	GWC29	20-Nov-2018	1225	0.33	<0.001	0.111	614	111	<1	288	0.029			2260	<1	1.57	1.98	0.002	94	0.040	0.003	0.010		6.9	36	<0.01	273	1.07	234	22.0		614	25.3	26.1	1410		0.011	
ME1801515034	GWC30	20-Nov-2018	1309	0.22	<0.001	0.074	530	209	<1	567	0.004			2980	<1	0.90	3.32	<0.001	153	0.168	<0.001	0.004		6.8	46	<0.01	185	2.46	300	21.0		530	32.8	32.2	1960		0.015	
ME1801515035	GWC31	20-Nov-2018	1520																																			
ME1801515036	GWC24	20-Nov-2018	1546	0.43	0.002	0.037	<1	110	<1	575	0.004			3520	<1	0.88	52.7	0.004	167	8.08	<0.001	0.257		3.7	72	<0.01	418	0.867	1140	21.0		<1	40.0	39.2	2660		0.293	
ME1801515037	GWC27	20-Nov-2018	1620	1.27	0.006	0.063	3	30	<1	365	0.030			1700	<1	2.16	3.97	0.019	40	4.22	<0.001	0.075		4.8	39	<0.01	271	0.186	311	19.5		3	16.8	17.6	1060		0.690	
ME1801515038	GWC32	20-Nov-2018	1406	0.16	<0.001	0.052	1280	128	<1	327	0.030			3410	<1	0.21	1.89	0.003	103	0.072	0.002	0.003		6.7	43	<0.01	568	4.83	274	19.0		1280	40.5	40.7	2210		0.009	
ME1801515039	GWA32	20-Nov-2018	1346	0.08	<0.001	0.046	368	145	<1	532	0.001			3310	<1	5.19	0.09	<0.001	163	0.302	0.002	0.003		7.3	22	<0.01	414	2.07	624	18.5		368	35.4	39.2	2360		<0.005	
ME1801515040	GWA34	20-Nov-2018	1439	22.6	0.002	0.016	<1	468	<1	352	0.020			6080	<1	2.72	128	0.002	555	13.5	<0.001	1.04		4.4	6	0.02	466	0.770	4060	19.5		<1	94.4	89.4	6420		2.63	
ME1801515041	GWC34	20-Nov-2018	1453	1.01	0.001	0.099	1620	69	<1	243	0.066			4700	<1	5.44	3.18	0.012	81	0.134	0.004	0.193		7.1	22	<0.01	1100	6.95	637	21.0		1620	52.5	58.5	3270		0.079	
ME1801515042	GWA36	19-Nov-2018	1416																																			
ME1801515043	GWC36	19-Nov-2018	1443	3.71	0.002	0.210	210	188	<1	385	0.012			3970	<1	1.56	26.8	0.013	206	2.44	0.002	0.024		6.4	41	<0.01	567	1.59	1700	20.0		210	50.4	52.0	2690		0.104	
ME1801515044	GWA16	19-Nov-2018	1403																																			
ME1801515045	PZ13	19-Nov-201																																				

Sample Number	Sample Location	Sampling Date	Sampling Time	Aluminium mg/L	Arsenic mg/L	Barium mg/L	Bicarbonate Alkalinity as CaCO3 mg/L	Calcium - Dissolved mg/L	Carbonate Alkalinity as CaCO3 mg/L	Chloride mg/L	Copper mg/L	Depth to Standpipe m	Depth of Dry Bore to Standpipe m	Electrical Conductivity @ 25° C µS/cm (Field)	Hydroxide Alkalinity as CaCO3 mg/L	Ionic Balance %	Iron mg/L	Lead mg/L	Magnesium - Dissolved mg/L	Manganese mg/L	Molybdenum mg/L	Nickel mg/L	No Sample	pH - pH Unit (Field)	Potassium - Dissolved mg/L	Selenium mg/L	Sodium - Dissolved mg/L	Strontium mg/L	Sulphate mg/L	Temperature °C	Temperature - Client Supplied °C	Total Alkalinity as CaCO3 mg/L	Total Anions meq/L	Total Cations meq/L	Total Dissolved Solids @ 180° C - Dissolved mg/L	Turbidity NTU	Zinc mg/L		
ME1801579006	GWA6	23-Nov-2018	1208									2.890																											
ME1801579007	GWA7	23-Nov-2018	1223									4.970																											
ME1801579008	GWA8	23-Nov-2018	1309									1.650																											
ME1801579009	GWC1	26-Nov-2018	1231									11.250																											
ME1801579010	GWC2	26-Nov-2018	1304									15.865																											
ME1801579011	GWC3	23-Nov-2018	1204									15.505																											
ME1801579012	GWC4	23-Nov-2018	1326									15.425																											
ME1801579013	GWC5	23-Nov-2018	1335									5.755																											
ME1801579014	GWA10	21-Nov-2018	1103									4.570																											
ME1801579015	GWC10	21-Nov-2018	1124									5.630																											
ME1801579016	GWA11	21-Nov-2018	1145									3.605																											
ME1801579017	GWC11	21-Nov-2018	1202									15.730																											
ME1801579018	GWA12	21-Nov-2018	1223									5.800																											
ME1801579019	GWC12	21-Nov-2018	1231									36.570																											
ME1801579020	GWA14	21-Nov-2018	1308									4.965																											
ME1801579021	GWC14	21-Nov-2018	1323									33.265																											
ME1801579022	GWA15	21-Nov-2018	1353									3.600																											
ME1801579023	GWC15	21-Nov-2018	1401									29.370																											
ME1801579024	GWC25	29-Nov-2018	1129									29.530																											
ME1801579025	GWC19	14-Nov-2018	1500																																				
ME1801579026	GWC35	29-Nov-2018	1028									47.370																											
ME1801579027	GWC33	19-Nov-2018	1205									42.220																											
ME1801579028	GWC26	19-Nov-2018	1247									40.790																											
ME1801579029	GWC18	14-Nov-2018	1500																																				
ME1801579030	GWC17	14-Nov-2018	1500																																				
ME1801579031	GWC16	19-Nov-2018	1343									29.510																											
ME1801579032	GWC28	20-Nov-2018	1121									44.765																											
ME1801579033	GWC29	20-Nov-2018	1213									45.005																											
ME1801579034	GWC30	20-Nov-2018	1258									32.295																											
ME1801579035	GWC31	20-Nov-2018	1515									51.160																											
ME1801579036	GWC24	20-Nov-2018	1537									23.110																											
ME1801579037	GWC27	20-Nov-2018	1609									16.125																											
ME1801579038	GWC32	20-Nov-2018	1359									4.360																											
ME1801579039	GWA32	20-Nov-2018	1333									2.295																											
ME1801579040	GWA34	20-Nov-2018	1430									4.545																											
ME1801579041	GWC34	20-Nov-2018	1446									20.305																											
ME1801579042	GWA36	19-Nov-2018	1416									5.940																											
ME1801579043	GWC36	19-Nov-2018	1422									15.890																											
ME1801579044	GWA16	19-Nov-2018	1403									4.070																											
ME1801579045	PZ13	19-Nov-2018	1144									2.330																											
ME1801579046	PZ20	26-Nov-2018	1122									2.990																											
ME1801579047	PZ21	26-Nov-2018	1109									3.870																											
ME1801579048	PZ26	26-Nov-2018	1050									4.360																											
ME1801579049	Barologger Office	29-Nov-2018	1030																																				
ME1801618001	GWA1	12-Dec-2018	1249																																				
ME1801618002	GWA2	21-Dec-2018	1139	12.0	0.149	0.188	175	27	<1	349	0.020			1430	<1	5.71	77.5	0.015	38	3.52	0.002	0.028		6.9	7	<0.01	202	0.384	83	20.5		175	15.1	13.4	885		0.043		
ME1801618003	GWA3	21-Dec-2018	1426																																				
ME1801618004	GWA4	21-Dec-2018	1412																																				
ME1801618005	GWA5	13-Dec-2018	1437	1.36	0.018	0.250	647	466	<1	1680	0.005			11700	<1	3.79	2.23	0.005	680	0.115	0.004	0.017		7.5	29	<0.01	1620	5.38	3800	19.5		647	139	150	10000		0.057		
ME1801618006	GWA6	21-Dec-2018	1522																																				

Sample Number	Sample Location	Sampling Date	Sampling Time	Aluminium mg/L	Arsenic mg/L	Barium mg/L	Bicarbonate Alkalinity as CaCO3 mg/L	Calcium - Dissolved mg/L	Carbonate Alkalinity as CaCO3 mg/L	Chloride mg/L	Copper mg/L	Depth to Standpipe m	Depth of Dry Bore to Standpipe m	Electrical Conductivity @ 25° C µS/cm (Field)	Hydroxide Alkalinity as CaCO3 mg/L	Ionic Balance %	Iron mg/L	Lead mg/L	Magnesium - Dissolved mg/L	Manganese mg/L	Molybdenum mg/L	Nickel mg/L	No Sample	pH - pH Unit (Field)	Potassium - Dissolved mg/L	Selenium mg/L	Sodium - Dissolved mg/L	Strontium mg/L	Sulphate mg/L	Temperature °C	Temperature - Client Supplied °C	Total Alkalinity as CaCO3 mg/L	Total Anions meq/L	Total Cations meq/L	Total Dissolved Solids @ 180° C - Dissolved mg/L	Turbidity NTU	Zinc mg/L		
ME1801618007	GWA7	21-Dec-2018	1540																																				
ME1801618008	GWA8	24-Dec-2018	1128	1.79	<0.001	0.085	239	104	<1	376	0.006			2160	<1	4.68	3.51	0.004	94	14.6	<0.001	0.012		7.0	10	<0.01	219	1.10	459	19.5		239	24.9	22.7	1560		0.024		
ME1801618009	GWC1	21-Dec-2018	1150	0.10	0.001	0.092	502	155	<1	720	0.003			3600	<1	1.13	3.60	<0.001	109	0.818	<0.001	0.005		7.1	26	<0.01	522	1.68	527	20.0		486	41.0	40.1	2330		0.014		
ME1801618010	GWC2	21-Dec-2018	1439	1.88	<0.001	0.733	502	66	<1	110	0.008			1230	<1	1.63	3.00	0.005	27	0.102	<0.001	0.007		7.1	24	<0.01	162	0.634	23	20.0		502	13.6	13.2	764		0.031		
ME1801618011	GWC3	21-Dec-2018	1513	3.42	0.010	0.068	684	173	<1	783	0.028			4500	<1	0.53	44.2	0.038	144	0.502	<0.001	0.015		6.9	39	<0.01	703	1.74	810	20.5		684	52.6	52.1	3050		0.072		
ME1801618012	GWC4	21-Dec-2018	1607	0.21	<0.001	0.121	613	179	<1	363	0.004			2400	<1	0.54	4.78	0.002	80	0.053	<0.001	<0.001		6.6	50	<0.01	242	1.88	218	21.0		613	27.0	27.3	1530		0.022		
ME1801618013	GWC5	24-Dec-2018	1153	0.03	<0.001	0.210	2300	215	<1	563	0.002			5340	<1	6.21	0.47	0.002	134	1.50	<0.001	0.030		6.6	73	<0.01	844	7.39	312	18.5		2300	68.3	60.3	3690		0.013		
ME1801618014	GWA10	19-Dec-2018	1439	3.72	0.008	0.057	471	107	<1	644	0.011			3310	<1	2.02	7.39	0.003	112	1.87	<0.001	0.011		7.1	1	<0.01	423	1.07	325	20.0		471	34.3	33.0	2020		0.012		
ME1801618015	GWC10	19-Dec-2018	1459	0.40	<0.001	0.051	375	204	<1	404	0.022			3800	<1	0.75	2.63	0.001	117	0.290	<0.001	0.003		7.0	33	<0.01	514	2.33	1190	20.0		375	43.7	43.0	2630		0.007		
ME1801618016	GWA11	19-Dec-2018	1541	7.05	<0.001	0.050	827	19	<1	105	0.045			1980	<1	0.27	5.65	0.008	23	0.360	<0.001	0.010		7.8	13	<0.01	424	0.476	108	20.0		827	21.7	21.6	1300		0.019		
ME1801618017	GWC11	19-Dec-2018	1525	7.48	<0.001	0.110	330	146	<1	336	0.042			3760	<1	0.48	18.9	0.015	150	1.84	<0.001	0.020		6.5	35	<0.01	515	1.44	1310	22.0		330	43.3	42.9	2430		0.275		
ME1801618018	GWA12	21-Dec-2018	1205																																				
ME1801618019	GWC12	21-Dec-2018	1234	6.06	<0.001	0.591	632	42	<1	114	0.030			1630	<1	0.73	6.73	0.009	17	0.191	<0.001	0.031		7.2	16	<0.01	325	0.564	93	22.0		632	17.8	18.0	1020		0.037		
ME1801618020	GWA14	21-Dec-2018	1250																																				
ME1801618021	GWC14	21-Dec-2018	1312	0.27	<0.001	5.78	473	41	<1	88	0.010			1120	<1	0.22	1.57	0.011	18	0.062	<0.001	0.002		7.4	16	<0.01	186	0.742	2	21.0		473	12.0	12.0	632		0.028		
ME1801618022	GWA15	21-Dec-2018	1334																																				
ME1801618023	GWC15	21-Dec-2018	1355	0.28	<0.001	0.890	583	56	<1	202	0.011			1650	<1	0.10	1.46	0.003	26	0.053	<0.001	0.001		7.0	20	<0.01	289	0.734	34	20.5		583	18.0	18.0	1050		0.013		
ME1801618024	GWC25	19-Dec-2018	1226	0.31	0.001	0.103	468	18	<1	275	0.022			1710	<1	3.01	0.50	0.005	74	1.18	0.001	0.095		6.9	7	<0.01	233	0.350	61	21.5		468	18.4	17.3	960		0.021		
ME1801618025	GWC19	06-Dec-2018	1500																																				
ME1801618026	GWC35	19-Dec-2018	1118	8.55	0.031	1.38	446	67	<1	105	0.401			1240	<1	5.28	63.4	0.104	40	3.14	0.001	0.062		7.3	25	<0.01	102	0.828	55	23.0		446	13.0	11.7	657		0.227		
ME1801618027	GWC33	12-Dec-2018	1134	0.68	<0.001	0.245	<1	436	25	118	0.004			5250	967	1.47	0.46	0.001	<1	0.014	0.001	0.002		12.4	20	<0.01	46	0.278	19	21.5		993	23.6	24.3	1430		0.028		
ME1801618028	GWC26	12-Dec-2018	1231	0.64	<0.001	0.277	368	54	<1	147	0.008			1250	<1	0.83	1.99	0.004	25	0.082	<0.001	0.003		7.2	17	<0.01	169	0.490	40	20.5		368	12.3	12.5	718		0.040		
ME1801618029	GWC18	06-Dec-2018	1500																																				
ME1801618030	GWC17	06-Dec-2018	1500																																				
ME1801618031	GWC16	12-Dec-2018	1324	0.43	<0.001	0.224	618	66	<1	277	0.006			2110	<1	1.49	6.01	0.007	32	0.046	<0.001	0.002		7.2	21	<0.01	361	0.642	65	21.0		618	21.5	22.2	1300		0.025		
ME1801618032	GWC28	17-Dec-2018	1207	0.17	<0.001	0.090	889	142	<1	454	0.017			3220	<1	1.18	2.01	0.002	87	0.058	<0.001	0.006		6.8	40	<0.01	477	1.96	303	22.5		889	36.9	36.0	2080		0.031		
ME1801618033	GWC29	17-Dec-2018	1257	0.77	<0.001	0.173	655	106	<1	272	0.029			2190	<1	1.02	2.11	0.003	88	0.060	0.005	0.019		7.0	35	<0.01	256	0.955	207	24.5		655	25.1	24.6	1380		0.030		
ME1801618034	GWC30	17-Dec-2018	1358	1.58	0.001	0.483	612	205	<1	516	0.026			3020	<1	0.17	5.81	0.011	157	0.259	0.002	0.015		7.0	54	<0.01	195	2.39	294	22.0		612	32.9	33.0	2080		0.087		
ME1801618035	GWC31	06-Dec-2018	1311																																				
ME1801618036	GWC24	06-Dec-2018	1354	0.41	<0.001	0.061	<1	109	<1	534	0.004			3520	<1	0.40	64.9	0.001	155	7.91	<0.001	0.253		4.8	66	<0.01	346	0.802	968	22.0		<1	35.2	34.9	2620		0.286		
ME1801618037	GWC27	06-Dec-2018	1429	1.29	0.004	0.061	2	29	<1	344	0.025			1690	<1	3.20	3.29	0.014	38	3.78	<0.001	0.074		4.6	34	<0.01	225	0.167	312	20.0		2	16.2	15.2	1060		0.648		
ME1801618038	GWC32	12-Dec-2018	1458	0.16	<0.001	0.050	1300	159	<1	308	0.035			3510	<1	3.91	1.70	0.001	115	0.067	<0.001	0.002		6.6	46	<0.01	562	4.58	246	18.5		1300	39.8	43.0	2260		0.010		
ME1801618039	GWA32	12-Dec-2018	1441	0.10	<0.001	0.044	369	149	<1	509	0.001			3350	<1	1.83	0.12	<0.001	154	0.295	0.003	0.002		7.2	21	<0.01	354	1.88	752	19.5		369	37.4	36.0	2340		0.006		
ME1801618040	GWA34	06-Dec-2018	1234	30.1	0.004	0.040	2	482	<1	341	0.291			6200	<1	4.70	128	0.013	560	14.1	<0.001	0.955		4.9	7	0.02	424	0.958	4220	20.0		2	97.5	88.8	6240		2.60		
ME1801618041	GWC34	06-Dec-2018	1245																																				
ME1801618042	GWA36	12-Dec-2018	1348																																				
ME1801618043	GWC36	12-Dec-2018	1404	5.66	0.002	0.126	220	175	<1	341	0.020			3990	<1	2.02	31.3	0.016	189	2.10	0.001	0.023		6.4	37	<0.01	478	1.41	1450	20.0		220	44.2	46.0	3170		0.100		
ME1801618044	GWA16	12-Dec-2018	1333																																				
ME1801618045	PZ13	12-Dec-2018	1104																																				
ME1801618046	PZ20	19-Dec-2018	1353	2.45	<0.001	0.021	298	20	<1	33	0.008			810	<1	1.12	1.64	0.002	22	0.064	0.001	0.007		7.6	15	<0.01	116	0.184	74	22.5		298	8.42	8.24	490		0.018		
ME1801618047	PZ21	19-Dec-2018	1325	4.13	0.002	0.028	368	21	<1	39	0.008			942	<1	4.46	2.67	0.002	16	0.337	0.																		

Sample Number	Sample Location	Sampling Date	Sampling Time	Aluminium mg/L	Arsenic mg/L	Barium mg/L	Bicarbonate Alkalinity as CaCO3 mg/L	Calcium - Dissolved mg/L	Carbonate Alkalinity as CaCO3 mg/L	Chloride mg/L	Copper mg/L	Depth to Standpipe m	Depth of Dry Bore to Standpipe m	Electrical Conductivity @ 25° C µS/cm (Field)	Hydroxide Alkalinity as CaCO3 mg/L	Ionic Balance %	Iron mg/L	Lead mg/L	Magnesium - Dissolved mg/L	Manganese mg/L	Molybdenum mg/L	Nickel mg/L	No Sample	pH - pH Unit (Field)	Potassium - Dissolved mg/L	Selenium mg/L	Sodium - Dissolved mg/L	Strontium mg/L	Sulphate mg/L	Temperature °C	Temperature - Client Supplied °C	Total Alkalinity as CaCO3 mg/L	Total Anions meq/L	Total Cations meq/L	Total Dissolved Solids @ 180° C - Dissolved mg/L	Turbidity NTU	Zinc mg/L		
ME1801639009	GWC1	21-Dec-2018	1147										11.300																										
ME1801639010	GWC2	21-Dec-2018	1430										16.175																										
ME1801639011	GWC3	21-Dec-2018	1508										15.350																										
ME1801639012	GWC4	21-Dec-2018	1603										15.400																										
ME1801639013	GWC5	24-Dec-2018	1149										5.880																										
ME1801639014	GWA10	19-Dec-2018	1432										4.675																										
ME1801639015	GWC10	19-Dec-2018	1451										6.060																										
ME1801639016	GWA11	19-Dec-2018	1535										3.990																										
ME1801639017	GWC11	19-Dec-2018	1513										16.320																										
ME1801639018	GWA12	21-Dec-2018	1205									5.800																											
ME1801639019	GWC12	21-Dec-2018	1211										36.450																										
ME1801639020	GWA14	21-Dec-2018	1250										4.960																										
ME1801639021	GWC14	21-Dec-2018	1258										32.340																										
ME1801639022	GWA15	21-Dec-2018	1334										3.655																										
ME1801639023	GWC15	21-Dec-2018	1345										28.275																										
ME1801639024	GWC25	19-Dec-2018	1215										29.610																										
ME1801639025	GWC19	13-Dec-2018	1500																																				
ME1801639026	GWC35	19-Dec-2018	1105										47.590																										
ME1801639027	GWC33	12-Dec-2018	1125										42.335																										
ME1801639028	GWC26	12-Dec-2018	1209										40.830																										
ME1801639029	GWC18	13-Dec-2018	1500																																				
ME1801639030	GWC17	13-Dec-2018	1500																																				
ME1801639031	GWC16	12-Dec-2018	1313										29.200																										
ME1801639032	GWC28	17-Dec-2018	1151										44.690																										
ME1801639033	GWC29	17-Dec-2018	1238										45.180																										
ME1801639034	GWC30	17-Dec-2018	1334										32.395																										
ME1801639035	GWC31	06-Dec-2018	1305										51.290																										
ME1801639036	GWC24	06-Dec-2018	1336										23.495																										
ME1801639037	GWC27	06-Dec-2018	1416										16.180																										
ME1801639038	GWC32	12-Dec-2018	1450										4.490																										
ME1801639039	GWA32	12-Dec-2018	1436										2.390																										
ME1801639040	GWA34	06-Dec-2018	1207										4.630																										
ME1801639041	GWC34	06-Dec-2018	1241										20.610																										
ME1801639042	GWA36	12-Dec-2018	1348										5.940																										
ME1801639043	GWC36	12-Dec-2018	1352										16.185																										
ME1801639044	GWA16	12-Dec-2018	1333										4.070																										
ME1801639045	PZ13	12-Dec-2018	1104										2.330																										
ME1801639046	PZ20	19-Dec-2018	1335										1.960																										
ME1801639047	PZ21	19-Dec-2018	1318										3.460																										
ME1801639048	PZ26	19-Dec-2018	1308										4.370																										
ME1801639049	Barologger Office	21-Dec-2018	1112																																				

Groundwater Review & Water Licence Review