

**APPENDIX 3 – ENVIRONMENTAL
PERFORMANCE**

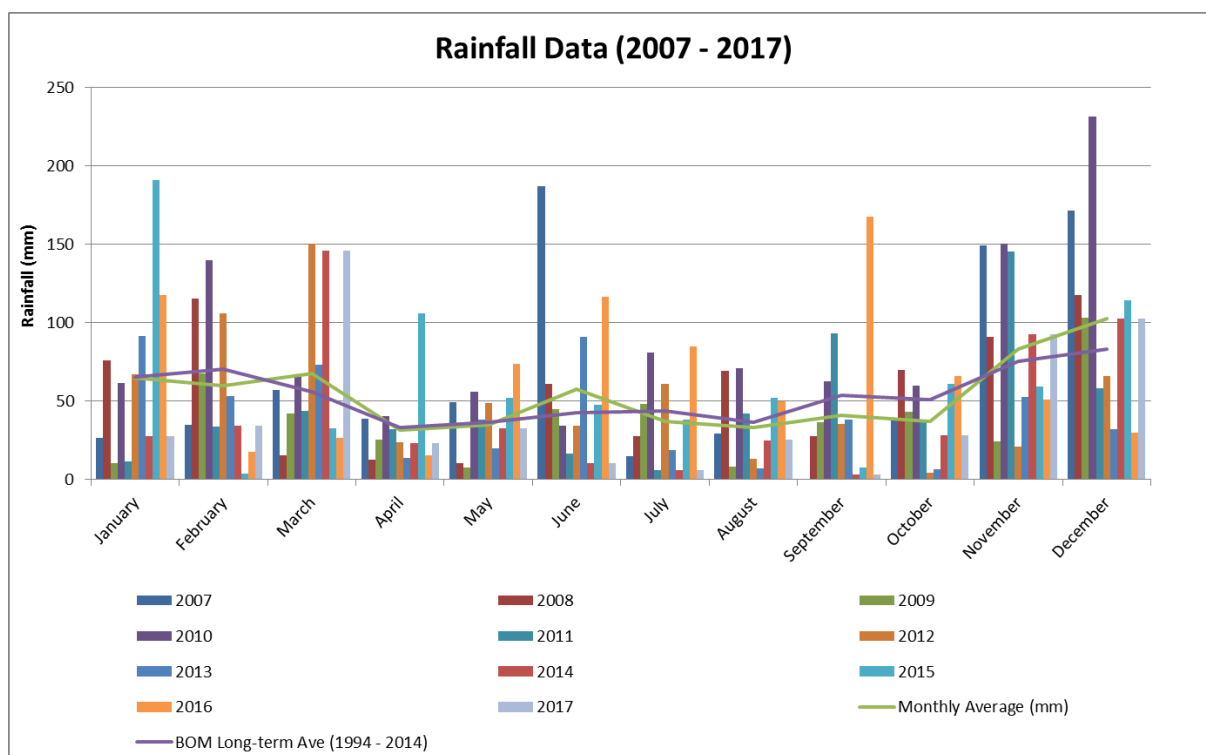
**APPENDIX 3A – METEOROLOGICAL
MONITROING DATA**

2017 Summary of Rainfall Data

	Year	Jan	Feb	Mar	Apr	May	Jun	Jul	Aug	Sep	Oct	Nov	Dec
Rainfall (mm)	2016	117.4	17.8	26.4	15.4	73.4	116.6	84.8	50	167.2	65.8	50.8	30
Cumulative Rainfall (mm)	2016	117.4	135.2	161.6	177	250.4	367	451.8	501.8	669	734.8	785.6	815.6

Historical Rainfall

Monthly	2006	2007	2008	2009	2010	2011	2012	2013	2014	2015	2016	2017	Monthly Average (mm)	BOM Long-term Ave (1994 - 2014)
January	67	26.2	75.8	10.6	61.4	11.4	66.8	91.2	27.8	190.8	117.4	27.8	64.5	65.5
February	76.6	35	115.2	67.8	139.8	33.6	105.6	53	34.2	3.6	17.8	34.2	59.7	70.5
March	9.2	57.2	15.6	42.2	67.2	43.4	150	73	146	32.4	26.4	146	67.4	56.1
April	20.8	38.8	12.4	25.4	40.6	32	23.8	13.8	23	106	15.4	23	31.3	33.1
May	0.8	49.2	10.4	7.4	56	38	48.8	20	32.4	52	73.4	32.4	35.1	36.7
June	37.2	186.8	61	44.8	34	16.6	34.2	90.6	10.4	47.4	116.6	10.4	57.5	42.6
July	51	14.6	27.8	48	81	6.2	60.6	18.6	6.2	38.2	84.8	5.8	36.9	43.6
August	7	29.2	69.4	8.2	70.8	41.8	13.4	6.8	24.8	52	50	25.2	33.2	36.4
September	15.6	0.2	27.8	36.2	62.4	92.8	35.4	38	3	7.8	167.2	3	40.8	53.4
October	1.8	39.4	70	43	60	38	4.2	6.6	28.4	60.8	65.8	28.4	37.2	51
November	70	149.2	91	24.2	150	145	20.8	52.8	92.6	59	50.8	92.6	83.2	75.5
December	NA	171.2	117.4	103.2	231.2	58	65.6	31.8	102.6	114.4	30	102.6	102.5	82.8

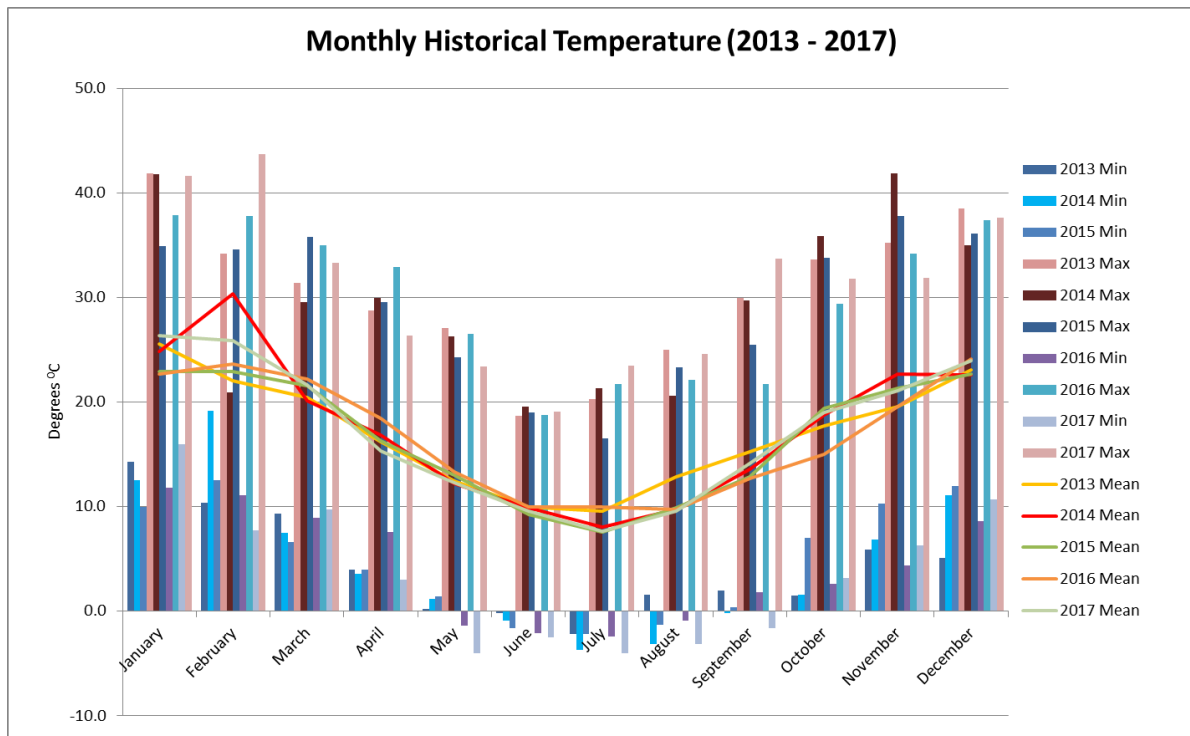


2016 Summary of Temperature Data

2017	Air Temperature (°C at 2 m)			Air Temperature (°C at 10 m)			Air Temperature (°C at 60 m)		
	Min	Max	Mean	Min	Max	Mean	Min	Max	Mean
January	16.0	41.6	26.4	16.8	40.8	26.2	17.1	39.6	25.7
February	7.7	43.7	25.9	8.4	43.0	25.8	10.2	41.8	25.4
March	9.7	33.3	18.0	10.4	32.7	21.7	11.5	31.8	21.3
April	3.0	26.4	10.3	3.8	25.3	15.6	4.8	24.2	15.6
May	-1.2	23.4	6.5	-0.5	23.1	12.6	1.1	22.3	12.9
June	-2.5	19.1	5.6	-1.5	18.5	9.9	0.0	17.7	10.4
July	-4.0	23.5	3.8	-3.2	22.9	8.1	-1.5	21.9	9.0
August	-3.1	24.6	6.7	-2.3	24.0	10.0	0.4	23.2	10.5
September	-1.6	33.7	8.3	-0.9	33.0	14.4	0.9	31.7	14.8
October	3.2	31.8	13.6	4.6	31.2	19.0	6.8	30.0	18.8
November	6.3	31.9	15.9	6.8	31.4	19.3	8.8	30.6	19.0
December	10.7	37.6	17.6	11.4	37.2	24.0	12.5	40.0	24.7

Historical Temperature Data

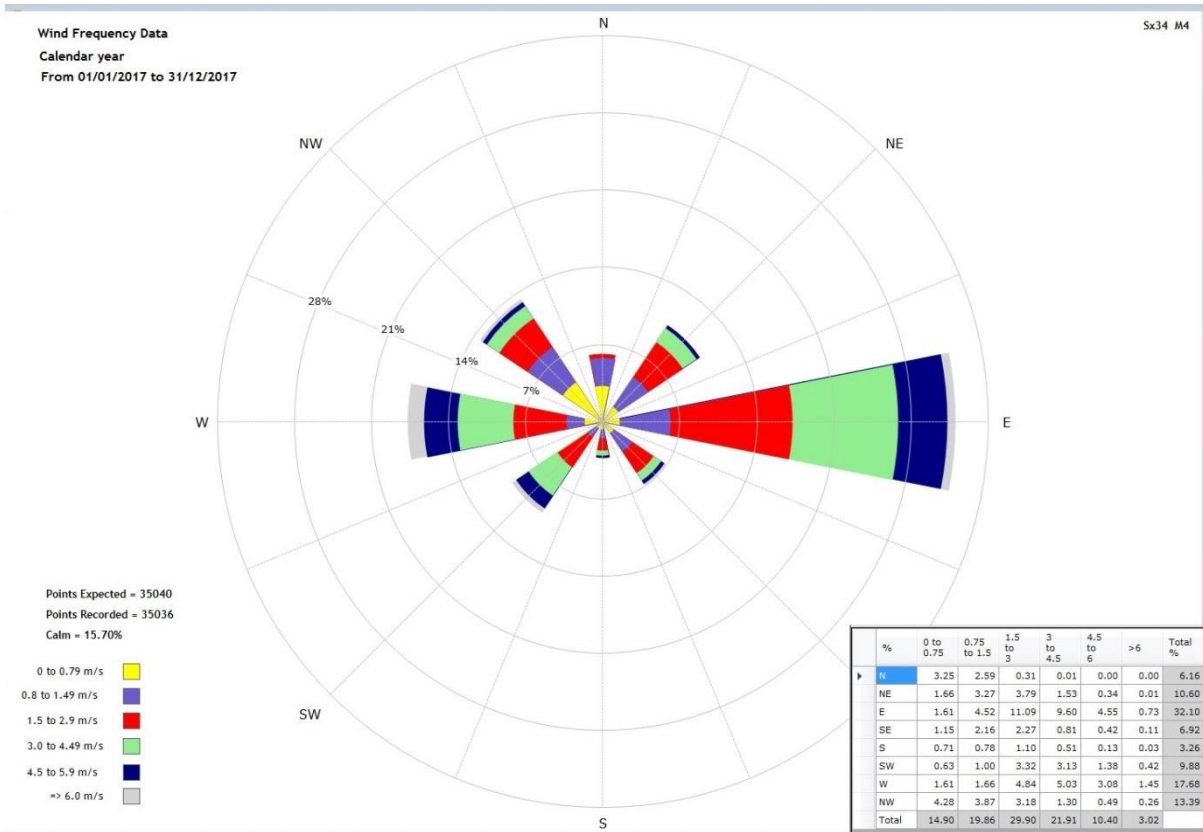
	2013 Min	2013 Max	2013 Mean	2014 Min	2014 Max	2014 Mean	2015 Min	2015 Max	2015 Mean	2016 Min	2016 Max	2016 Mean	2017 Min	2017 Max	2017 Mean
January	14.3	41.9	25.6	12.5	41.8	24.8	10.0	34.9	22.9	11.8	37.9	22.7	16.0	41.6	26.4
February	10.4	34.2	22.0	19.2	20.9	30.4	12.5	34.6	22.9	11.1	37.8	23.6	7.7	43.7	25.9
March	9.3	31.4	20.5	7.5	29.6	20.1	6.6	35.8	21.6	8.9	35.0	22.2	9.7	33.3	21.7
April	4.0	28.8	16.2	3.6	30.0	16.9	4.0	29.6	16.3	7.6	32.9	18.5	3.0	26.4	15.3
May	0.2	27.1	12.4	1.2	26.3	12.2	1.4	24.3	13.0	-1.4	26.5	13.3	-4.0	23.4	12.3
June	-0.2	18.7	10.0	-0.9	19.6	9.9	-1.6	19.0	9.2	-2.1	18.8	10.0	-2.5	19.1	9.5
July	-2.2	20.3	9.6	-3.7	21.3	8.0	-2.2	16.5	7.6	-2.4	21.7	10.0	-4.0	23.5	7.7
August	1.6	25.0	12.9	-3.1	20.6	9.8	-1.3	23.3	9.9	-0.9	22.1	9.7	-3.1	24.6	9.6
September	2.0	30.0	15.2	-0.2	29.7	13.6	0.4	25.5	12.8	1.8	21.7	12.7	-1.6	33.7	14.1
October	1.5	33.6	17.7	1.6	35.9	18.8	7.0	33.8	19.4	2.6	29.4	15.0	3.2	31.8	19.0
November	5.9	35.2	19.6	6.9	41.9	22.7	10.3	37.8	21.4	4.4	34.2	19.6	6.3	31.9	21.1
December	5.1	38.5	23.1	11.1	35.0	22.6	12.0	36.1	22.7	8.6	37.4	24.1	10.7	37.6	23.9



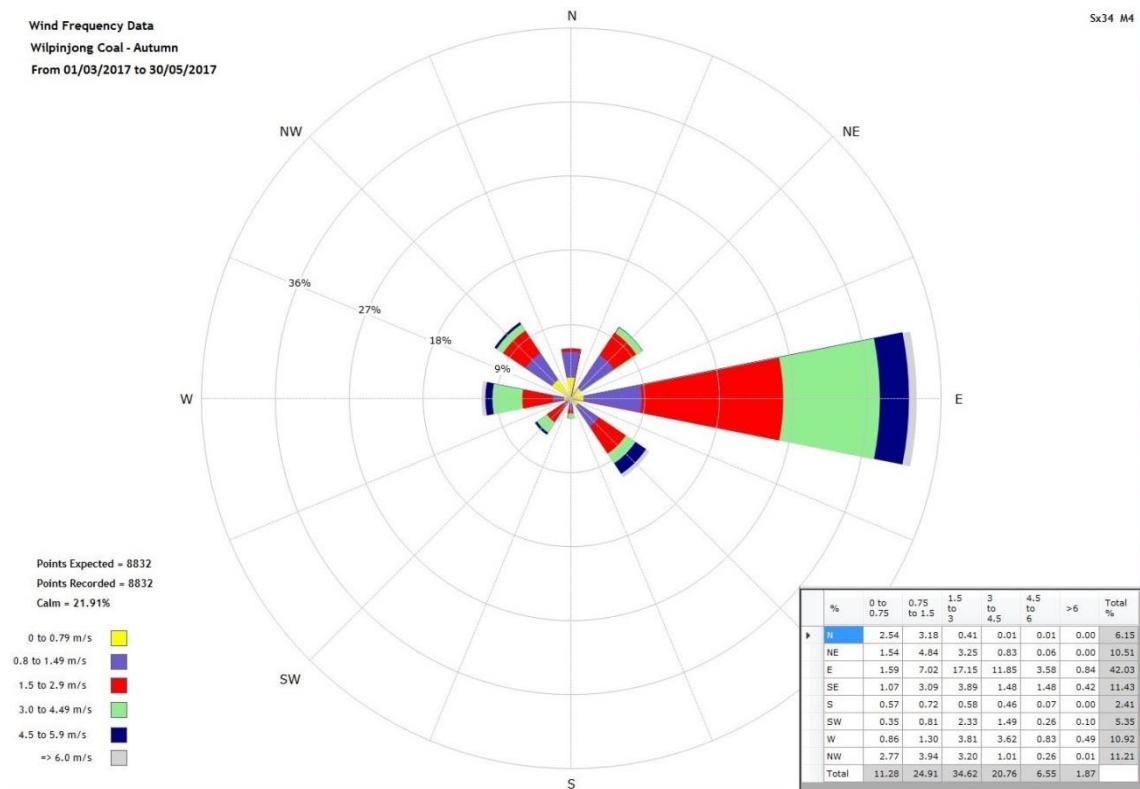
2017 Average Wind Speeds & Directions

Month	Ave Wind Speed (m/s)	Max Wind Speed (m/s)	Ave Wind Dir.
January	2.3	13.0	172.81
February	2.2	61.5	158.89
March	1.9	10.3	127.77
April	1.5	8.7	167.47
May	1.1	9.1	161.71
June	21947.1	63205100.0	156.13
July	1.3	8.9	230.77
August	1.8	8.5	222.39
September	2.1	9.3	241.60
October	2.0	10.4	186.29
November	2.2	11.0	113.17
December	1.8	7.5	171.65

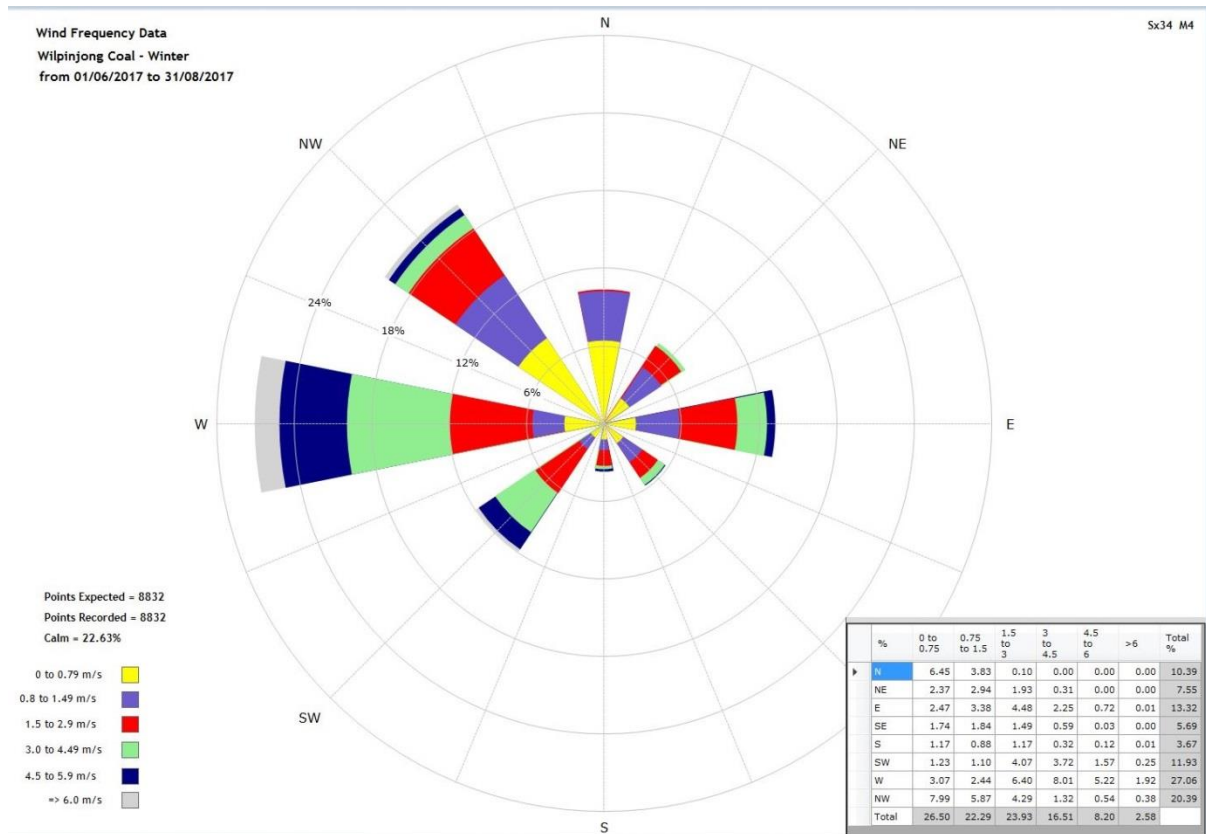
Annual Wind Rose 2017



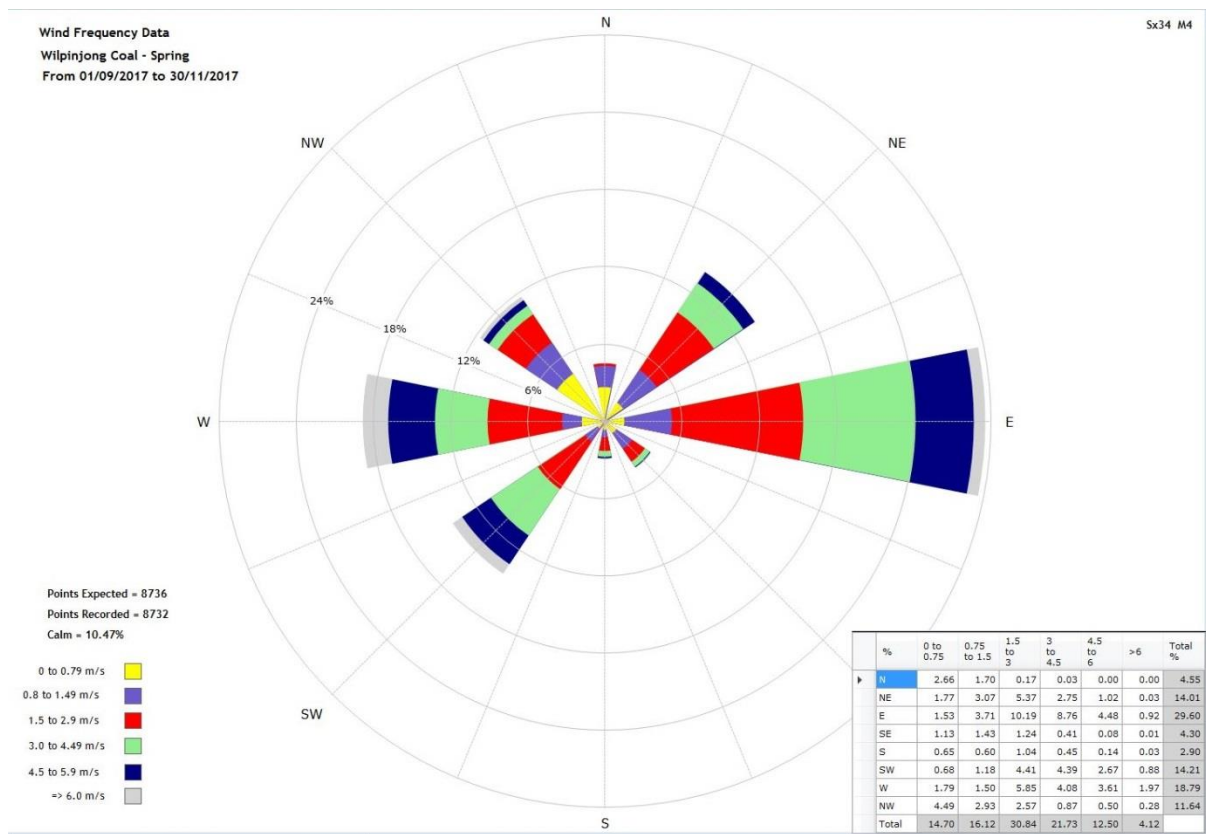
Autumn Wind Rose 2017



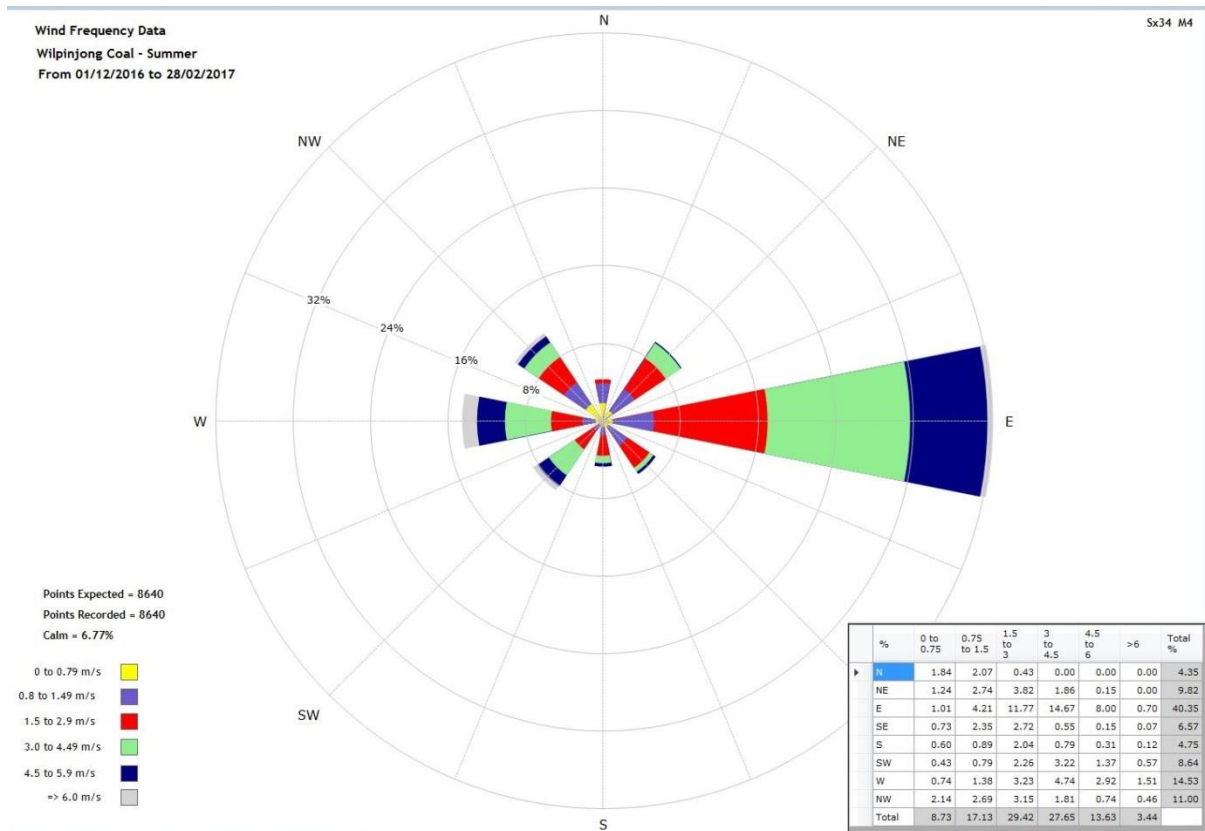
Winter Wind Rose 2017



Spring Wind Rose 2017



Summer Wind Rose 2017



Location of Meteorological Station

