

WAMBO COAL  
POLLUTION MONITORING DATA  
1 DECEMBER 2024 – 31 DECEMBER 2024  
DECEMBER MONTHLY REPORT

Published 06 January 2025

Environment Protection Licence Number: 529  
Licensee: Wambo Coal Pty Limited, PMB 1, Singleton NSW 2330  
Premises: Wambo Coal Pty Limited, Jerrys Plains Road, Warkworth NSW 2330

The following pollution monitoring data is published as a requirement of the Wambo Environmental Protection Licence (EPL) 529. A link to EPL529 can be found on the Environmental Protection Authority (EPA) Public Register. A link to the EPA's public register can be found at: <https://www.epa.nsw.gov.au/licensing-and-regulation/public-registers/about-prpoeo>

Monthly interim reports will be provided on a fortnightly basis until a final monthly report is produced when all monthly data is available.

The location of each sampling point is provided in 'Plan 2672-2' at the end of this document.

### Monitoring Data

#### Surface and Mine Water Dam Monitoring

Monitoring Frequency: Once per month

Sampling Method: Grab sample

Limits: Nil

Table 1 - WCPL Surface and Mine Water Dam Results

EPL ID	Site ID	Date	pH	EC (µS/cm)	TSS (mg/L)	Comments
Point 24	SW01	17/12/2024	7.59	902	<5	-
Point 25	SW02	17/12/2024	7.62	852	<5	-
Point 26	SW03	17/12/2024	7.63	898	6	-
Point 27	SW04	17/12/2024	-	-	-	DRY
Point 28	SW05	17/12/2024	-	-	-	DRY
Point 29	SW06	17/12/2024	-	-	-	DRY
Point 30	SW07	17/12/2024	-	-	-	-
Point 31	SW08	17/12/2024	-	-	-	DRY
Point 33	SW15	03/12/2024	8.98	6110	27	-
Point 34	SW27a	17/12/2024	-	-	-	DRY
Point 36	SW32a	17/12/2024	-	-	-	DRY
Point 39	SW39	17/12/2024	-	-	-	DRY
Point 40	SW40	17/12/2024	-	-	-	-
Point 41	SW41	17/12/2024	-	-	-	Pool/ No Flow
Point 42	SW54	17/12/2024	-	-	-	DRY

Water Discharge Monitoring

Monitoring Frequency: Continuous during discharge (EC, pH, Turbidity)  
 Daily during discharge (TSS, Volume)  
 Sampling Method: In line instrumentation (EC, pH Turbidity)  
 Grab sample (TSS)  
 Limits: pH- 6.5 to 9.5  
 TSS – 120  
 Volume – 250ML/day  
 Date sampled: Continuous  
 Date obtained: Continuous

Table 2 - WCPL Discharge Monitoring

Site	Date	pH (Avg)	Conductivity (µS/cm) Avg	TSS (mg/L)	Turbidity (NTU)	Volume (ML/day)	Comments
Point 4	No Discharge in December						
Point 19	No Discharge in December						

Sewerage Treatment Monitoring

Monitoring Frequency: Quarterly during discharge  
 Sampling Method: Grab sample  
 Limits: Nil  
 Date sampled: No Samples in December  
 Date obtained: No Samples in December

Table 3- WCPL Discharge Monitoring

EPL ID	Site ID	Date	pH	Faecal Coliforms (CFU/100mL)	Comments
Point 43	STPD3	-	-	-	No discharge
Point 52	STPD2				Sample required Quarterly
Point 56	STP1	-	-	-	Sample required Quarterly

**PM10 Monitoring**

Monitoring Frequency: Continuous

Sampling Method: AM22

Limits: Nil

Date sampled: Continuous

Date obtained: Continuous

Table 4 - WCPL PM10 Results

Date	PM02 (D2)- Wambo Road (Caban) (EPA14)		PM03 (D4) - Thelander (EPA15)		PM04 (D1) - Muller (EPA16)		PM05 (D5) - Kelly (EPA 53)	
	PM10 24 Hour Result (ug/m <sup>3</sup> )	Annual Average	PM10 24 Hour Result (ug/m <sup>3</sup> )	Annual Average	PM10 24 Hour Result (ug/m <sup>3</sup> )	Annual Average	PM10 24 Hour Result (ug/m <sup>3</sup> )	Annual Average
1/12/2024	9.3	14.26	7.3	11.04	15.7	18.11	25.0	21.80
2/12/2024	14.7	14.28	7.9	11.04	16.9	18.11	17.6	21.80
3/12/2024	14.7	14.28	10.9	11.04	15.3	18.11	20.9	21.83
4/12/2024	16.7	14.28	16.5	11.04	23.6	18.11	9.9	21.79
5/12/2024	16.1	14.28	17.3	11.06	26.3	18.13	17.2	21.74
6/12/2024	20.7	14.23	22.3	11.03	24.1	18.07	28.0	21.71
7/12/2024	13.3	14.15	6.7	10.96	16.6	17.99	32.6	21.73
8/12/2024	17.5	14.13	11.6	10.93	14.5	17.94	18.2	21.68
9/12/2024	17.4	14.11	12.2	10.90	29.0	17.94	21.2	21.67
10/12/2024	18.5	14.11	15.9	10.91	24.7	17.93	18.8	21.65
11/12/2024	29.6	14.09	21.3	10.88	44.5	17.94	29.4	21.63
12/12/2024	22.3	14.10	13.4	10.85	33.3	17.96	26.3	21.63
13/12/2024	28.3	14.09	18.4	10.84	42.6	17.97	47.3	21.66
14/12/2024	30.9	14.10	28.8	10.88	51.2	18.05	22.7	21.58
15/12/2024	33.1	14.09	26.9	10.86	44.9	18.04	35.2	21.56
16/12/2024	20.3	14.09	21.6	10.87	35.4	18.06	13.8	21.47
17/12/2024	18.2	14.06	11.7	10.84	26.4	18.04	27.4	21.46
18/12/2024	11.2	13.99	7.1	10.78	28.2	18.00	16.3	21.42
19/12/2024	16.1	13.90	13.6	10.75	27.1	17.96	17.9	21.35
20/12/2024	14.2	13.90	17.7	10.76	35.5	18.02	21.1	21.35
21/12/2024	23.8	13.95	14.4	10.78	38.2	18.10	23.4	21.38
22/12/2024	26.2	13.97	15.0	10.77	38.7	18.15	19.0	21.38
23/12/2024	20.5	13.98	15.6	10.78	26.1	18.15	44.4	21.45
24/12/2024	15.9	14.00	15.3	10.79	27.6	18.20	19.7	21.49
25/12/2024	13.6	14.00	10.1	10.80	18.8	18.21	10.6	21.48
26/12/2024	17.2	14.00	10.6	10.78	24.8	18.24	20.1	21.49
27/12/2024	21.3	14.03	NaN	10.79	27.7	18.27	40.3	21.52
28/12/2024	25.8	14.07	14.7	10.81	29.6	18.31	31.7	21.55
29/12/2024	22.9	14.11	19.5	10.84	36.2	18.38	24.8	21.54
30/12/2024	19.5	14.12	13.5	10.86	30.9	18.41	22.6	21.52
31/12/2024	18.7	14.13	20.6	10.88	40.1	18.45	25.7	21.54

\*NaN >75% of data collected during period

Meteorological Monitoring

Monitoring Frequency: Continuous

Sampling Method: Site Meteorological Station EPA17

Limits: Nil

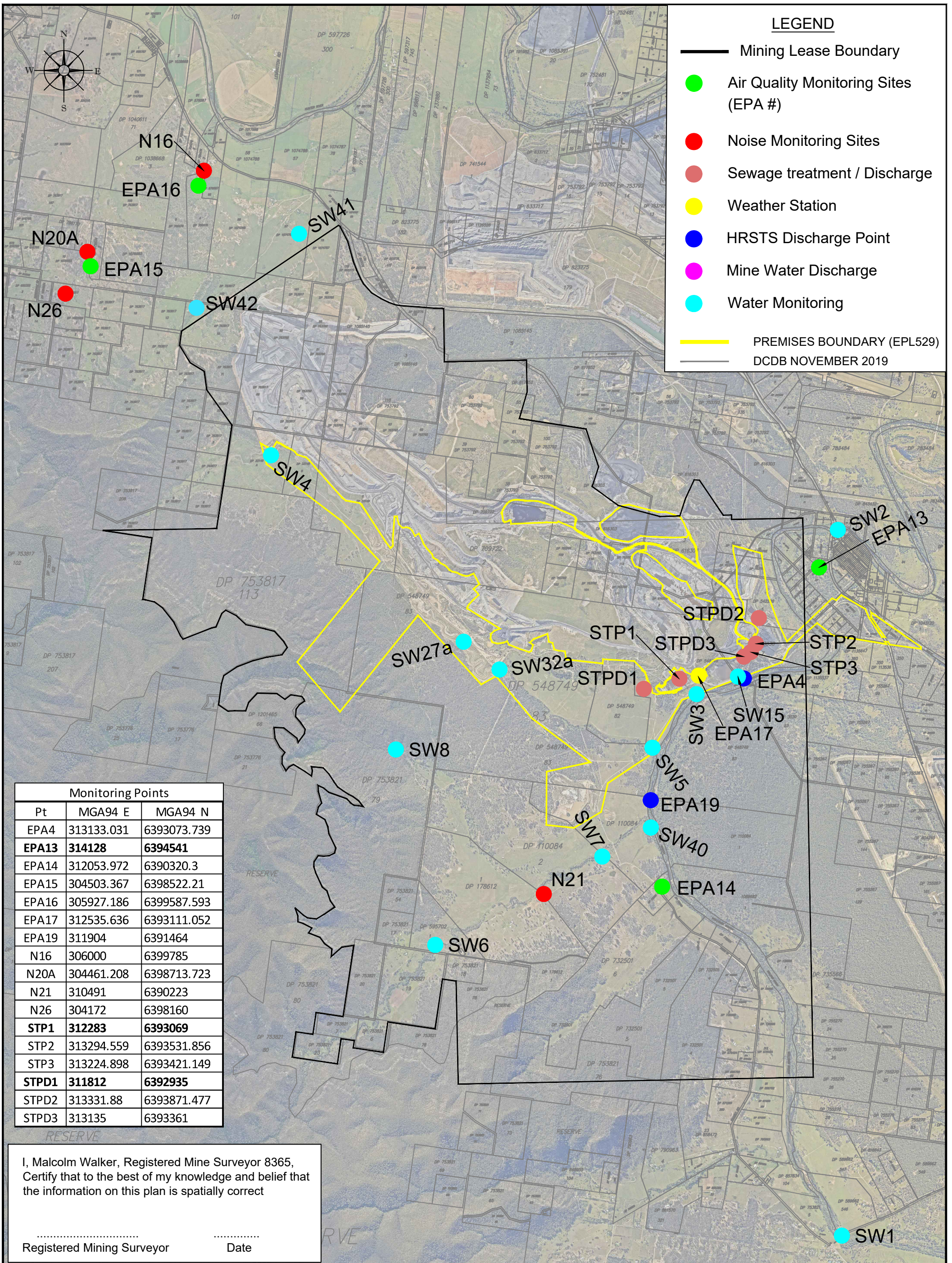
Date sampled: continuous

Date obtained: continuous

Table 5 - WCPL Meteorology

Date	Temperature (2m)			Temperature (10m)			Humidity			Solar Radiation		RAIN	Wind Speed at 10m			Wind Direction at 10m	Sigma Theta		
	Average	Min	Max	Average	Min	Max	Average	Min	Max	Average	Max	Sum (mm)	Average	Min	Max	Average	Average	Max	Min
1/12/2024	25.6	18.3	31.2	25.4	18.6	30.5	67.5	45.9	99.9	293.3	975.6	0.2	2.2	0.1	4.7	239.8	28.0	90.2	11.5
2/12/2024	26.0	15.0	36.0	26.1	15.4	35.3	61.4	21.9	99.9	280.8	991.6	0.0	1.5	0.1	4.9	252.0	26.9	84.8	6.3
3/12/2024	24.3	18.1	31.7	24.5	18.7	31.1	76.2	44.6	99.9	121.1	509.9	0.0	2.0	0.1	6.5	265.8	26.2	98.5	10.6
4/12/2024	24.7	19.8	29.6	24.6	20.4	28.9	75.9	54.8	99.9	146.4	876.3	0.2	2.4	0.2	5.0	147.0	23.2	64.1	12.1
5/12/2024	24.9	21.0	31.2	24.6	20.9	30.4	71.7	50.5	90.2	204.4	1034.2	0.0	1.8	0.3	4.3	131.3	23.1	79.1	10.3
6/12/2024	26.9	19.6	35.5	26.9	20.0	34.5	74.5	43.8	99.9	178.9	951.6	0.0	1.2	0.0	17.1	178.4	30.4	89.5	10.3
7/12/2024	28.5	22.4	35.4	28.6	22.6	34.6	67.9	36.6	99.9	136.4	886.9	0.2	2.2	0.1	6.9	229.1	28.3	100.4	7.0
8/12/2024	27.5	20.9	37.8	27.1	20.8	37.1	63.9	23.0	88.2	257.5	1011.2	0.2	3.9	1.0	6.6	233.4	22.8	66.3	12.4
9/12/2024	22.1	19.7	24.7	21.9	19.6	24.2	83.9	72.2	98.2	56.2	389.8	0.0	1.9	0.9	4.3	134.9	19.8	37.9	9.8
10/12/2024	24.5	19.4	33.0	24.3	19.8	32.4	67.2	24.8	99.9	244.5	1017.2	0.0	2.5	0.1	6.7	150.0	26.6	90.4	10.1
11/12/2024	23.8	16.0	31.7	23.6	16.8	31.1	59.8	28.6	99.9	281.0	940.4	0.0	1.7	0.1	5.3	122.1	31.1	102.7	8.4
12/12/2024	25.7	14.2	36.1	25.6	15.1	35.1	55.3	13.5	99.9	310.3	942.6	0.0	1.8	0.1	4.5	229.9	29.0	95.2	7.0
13/12/2024	28.3	16.5	38.2	28.2	17.3	37.4	49.6	13.8	99.9	292.9	937.3	0.0	1.8	0.0	6.5	233.9	30.9	102.0	7.5
14/12/2024	27.8	22.0	35.7	27.5	22.3	34.7	58.0	31.5	88.1	275.6	899.6	0.0	2.1	0.1	5.0	127.2	23.0	85.5	7.6
15/12/2024	27.6	19.3	37.7	27.5	19.8	36.7	67.0	25.7	99.9	251.5	909.3	0.0	2.0	0.1	8.0	123.6	30.3	93.3	7.7
16/12/2024	28.7	22.6	35.9	28.3	22.6	34.6	59.5	33.5	86.8	291.0	906.7	0.0	2.3	0.7	5.6	124.8	23.0	72.2	10.2
17/12/2024	29.8	18.2	40.8	29.5	18.8	40.0	57.0	19.4	99.9	270.3	904.1	0.4	2.3	0.0	6.0	234.5	25.0	74.0	8.2
18/12/2024	19.9	16.6	22.1	19.7	16.8	22.0	70.1	45.3	92.8	65.6	266.4	0.0	3.1	1.5	5.6	140.0	17.7	24.5	11.2
19/12/2024	20.4	14.1	26.9	20.1	15.2	25.6	59.1	29.2	99.9	235.2	1013.3	0.0	2.8	0.2	5.8	117.6	18.8	55.8	5.6
20/12/2024	20.7	10.2	30.5	20.6	10.9	29.6	60.9	26.5	99.9	289.3	874.9	0.0	2.0	0.1	5.9	133.2	26.2	83.0	7.5
21/12/2024	25.2	13.2	36.7	25.0	13.8	36.0	54.4	19.5	99.9	251.7	907.8	0.0	2.2	0.0	5.8	193.4	25.7	80.1	6.5
22/12/2024	26.0	21.2	34.2	25.6	21.1	33.1	61.7	36.6	79.1	238.2	852.8	0.0	2.1	0.3	5.3	131.1	24.3	95.3	8.4
23/12/2024	25.8	15.8	32.6	25.6	16.9	31.5	46.3	5.5	99.9	296.4	903.4	0.0	2.9	0.1	7.9	217.6	24.7	72.8	9.1
24/12/2024	20.3	8.8	30.0	20.3	10.0	28.9	49.5	16.1	97.6	295.0	891.1	0.0	2.3	0.2	7.6	154.5	31.2	88.6	10.8
25/12/2024	22.9	12.1	33.1	22.7	12.9	32.4	54.6	22.9	97.7	291.3	887.3	0.0	1.4	0.1	6.0	140.9	36.9	99.6	7.3
26/12/2024	27.1	14.3	38.0	27.0	15.4	37.1	47.9	15.6	96.1	292.7	887.0	0.0	1.6	0.1	4.8	178.4	30.6	81.0	6.2
27/12/2024	27.7	19.1	37.6	27.7	19.7	36.7	53.0	29.2	99.9	220.0	1017.5	5.0	2.7	0.0	6.3	262.6	25.2	83.5	6.7
28/12/2024	24.4	18.5	34.3	24.0	18.9	33.3	62.3	13.3	99.9	269.7	1067.7	1.0	1.9	0.3	5.8	135.0	26.9	96.4	8.1
29/12/2024	23.8	12.2	33.6	23.7	13.2	32.6	51.8	13.7	99.9	323.0	986.1	0.0	2.0	0.1	6.5	145.0	31.8	96.5	10.5
30/12/2024	25.1	20.7	31.4	24.7	20.7	30.2	60.5	36.6	77.9	285.2	1021.4	0.0	2.8	0.1	5.8	125.3	21.8	74.2	9.8
31/12/2024	24.8	19.2	31.1	24.6	19.4	30.1	63.6	40.8	93.5	209.4	1021.5	0.0	2.0	0.1	4.7	121.0	22.5	81.8	7.6
<b>Total</b>	<b>25.2</b>	<b>8.8</b>	<b>40.8</b>	<b>25</b>	<b>10</b>	<b>40</b>	<b>61.6</b>	<b>5.5</b>	<b>99.9</b>	<b>240</b>	<b>1067.7</b>	<b>7.2</b>	<b>2.2</b>	<b>0</b>	<b>17.1</b>	<b>172</b>	<b>26.2</b>	<b>102.7</b>	<b>5.6</b>

This page is intentionally left blank.



**LEGEND**

—	Mining Lease Boundary
●	Air Quality Monitoring Sites (EPA #)
●	Noise Monitoring Sites
●	Sewage treatment / Discharge
●	Weather Station
●	HRSTS Discharge Point
●	Mine Water Discharge
●	Water Monitoring
—	PREMISES BOUNDARY (EPL529)
—	DCDB NOVEMBER 2019

Monitoring Points		
Pt	MGA94 E	MGA94 N
EPA4	313133.031	6393073.739
<b>EPA13</b>	<b>314128</b>	<b>6394541</b>
EPA14	312053.972	6390320.3
EPA15	304503.367	6398522.21
EPA16	305927.186	6399587.593
EPA17	312535.636	6393111.052
EPA19	311904	6391464
N16	306000	6399785
N20A	304461.208	6398713.723
N21	310491	6390223
N26	304172	6398160
<b>STP1</b>	<b>312283</b>	<b>6393069</b>
STP2	313294.559	6393531.856
STP3	313224.898	6393421.149
<b>STPD1</b>	<b>311812</b>	<b>6392935</b>
STPD2	313331.88	6393871.477
STPD3	313135	6393361

I, Malcolm Walker, Registered Mine Surveyor 8365, Certify that to the best of my knowledge and belief that the information on this plan is spatially correct


.....  
 Registered Mining Surveyor                      Date

Rev.	Drawn	Description	Approved
D	MJW	Water monitoring and discharge sites added	
E	MJW	Monitoring points except water monitoring added to coordinate table	
G	MJW	STPD3 Location amended	
H	MJW	EPA 13, STP 1, STPD1 & EPA 11 Locations amended	JB
I	RE	Opencut related monitors removed	JB

**WAMBO COAL PTY LIMITED**  
 ABN 13 000 668 057

Jerry's Plains Rd, Warkworth Phone: 02 65 702200  
 Via Singleton, NSW, 2330 Fax: 02 65 702290

Prepared by NWU Survey Ph: 02 65 702318



**Wambo mine**  
 Environment Protection Licence 529  
 Plan of Premises- Monitoring Sites

Date \_\_\_\_\_ Scale: 1:45,000 Drawn: MJW Checked: JB Approved: PJ

Drawing No. <b>2672-2</b>
Revision No. J_26/11/2020
Sheet Size A3