

Wambo Coal Mine and Rail Spur

*Environmental Noise Monitoring
August 2020*

*Prepared for
Wambo Coal Pty Limited*



Noise and Vibration Analysis and Solutions

Global Acoustics Pty Ltd
PO Box 3115 | Thornton NSW 2322
Telephone +61 2 4966 4333
Email global@globalacoustics.com.au
ABN 94 094 985 734

Wambo Coal Mine and Rail Spur

Environmental Noise Monitoring August 2020

Reference: 20200_R02

Report date: 25 September 2020

Prepared for

Wambo Coal Pty Limited
PMB 1
Singleton NSW 2330

Prepared by

Global Acoustics Pty Ltd
PO Box 3115
Thornton NSW 2322



Prepared: Robert Kirwan
Consultant

QA Review: Jesse Tribby
Consultant

Global Acoustics Pty Ltd ~ Environmental noise modelling and impact assessment ~ Sound power testing ~ Noise control advice ~ Noise and vibration monitoring ~ OHS noise monitoring and advice ~ Expert evidence in Land and Environment and Compensation Courts ~ Architectural acoustics ~ Blasting assessments and monitoring ~ Noise management plans (NMP) ~ Sound level meter and noise logger sales and hire

Table of Contents

1 INTRODUCTION	1
1.1 Background	1
1.2 Monitoring Locations & Frequency	1
1.3 Terminology & Abbreviations	3
2 REGULATOR REQUIREMENTS AND NOISE CRITERIA	4
2.1 WCM Development Consent	4
2.2 WCRS Development Consent	4
2.3 Environment Protection Licence	4
2.4 Noise Management Plan	4
2.5 Noise Criteria	4
2.6 Meteorological Conditions	5
2.6.1 Development Consent	5
2.6.2 Environment Protection Licence	5
2.7 Modifying Factors	5
3 METHODOLOGY	6
3.1 Overview	6
3.2 Attended Noise Monitoring	6
3.3 Meteorological Data	7
3.4 Attended Noise Monitoring Equipment	7
3.5 Modifying Factors	7
4 RESULTS	8
4.1 Plant Locations	8
4.2 Total Measured Noise Levels	9
4.3 Modifying Factors	9
4.4 Attended Noise Monitoring	10
4.5 Atmospheric Conditions	11
5 DISCUSSION	12
5.1 Noted Noise Sources	12

5.1.1 N01.....	13
5.1.2 N16.....	14
5.1.3 N20A.....	15
5.1.4 N21.....	16
5.1.5 N26.....	17
6 SUMMARY.....	18

Appendices

A REGULATOR DOCUMENTS.....	19
B CALIBRATION CERTIFICATES.....	28

1 INTRODUCTION

1.1 Background

Global Acoustics was engaged by Wambo Coal (WC) to conduct a monthly noise survey of operations at Wambo Coal Mine (WCM) and Wambo Coal Rail Spur (WCRS). WCM and WCRS operate under separate development consents and have been monitored separately, while reporting has been combined. The purpose of the survey is to quantify and describe the existing acoustic environment around WCM and WCRS, and compare results with relevant limits.

WC operates both open cut and underground mining operations from their mine at Warkworth, NSW. The open cut operations include use of heavy mobile equipment in open cut pits, on haul roads, and on waste rock emplacements. The underground operations have surface facilities. Both operations utilise a coal handling and preparation plant (CHPP) including conveyors, bins and other material-handling infrastructure.

The WCRS is located between Mt Thorley and Warkworth Village and includes the following components:

- a product coal stockpile and reclaim area, product coal conveyor, train load-out bin, rail loop and a rail spur from the WCM to Mount Thorley;
- rail transport of product coal to the market, an intermittent activity that can take place at any time; and
- a locomotive refuelling facility.

Attended environmental noise monitoring described in this report was undertaken during the night of 24/25 August 2020 at a total of five monitoring locations for WCM and WCRS.

1.2 Monitoring Locations & Frequency

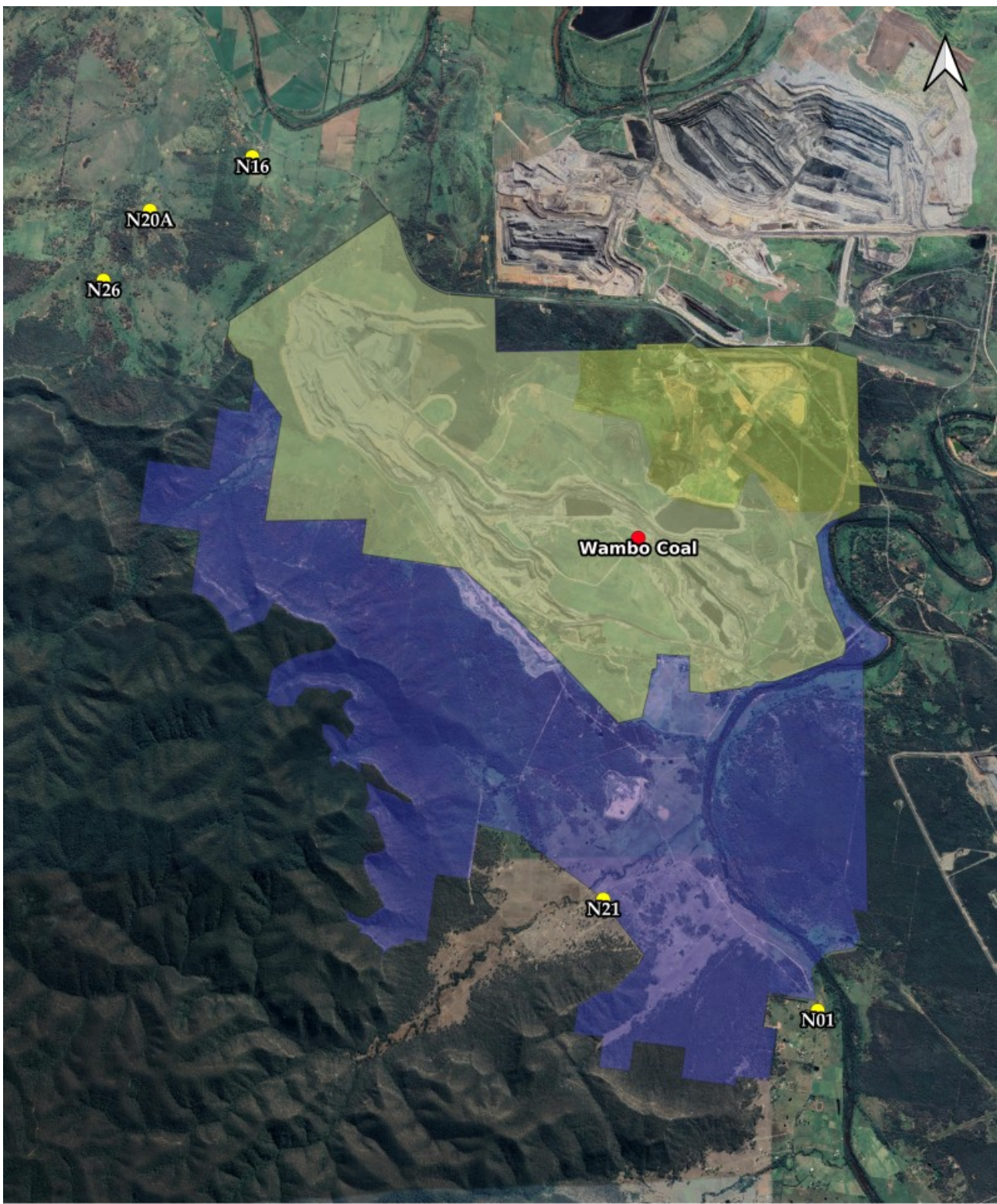
Monitoring locations, type, and frequency are detailed in Table 1.1 and shown in Figure 1. It should be noted that Figure 1 shows the actual monitoring position, not the location of residences.

Table 1.1: WAMBO COAL MONITORING LOCATIONS AND FREQUENCY¹

Site Reference	Residence	Monitor Type	Consent Requirements	Frequency
N01	Wambo Road Residence	Attended	Mine & Rail Spur	Monthly
N16	Jerrys Plains Road	Attended	Mine	Monthly
N20A	Redmanvale Road Central	Attended	Mine	Monthly
N20 ²	Redmanvale Road Central	Real-Time	Mine	Continuous
N21	Wambo South	Real-Time & Attended	Mine & Rail Spur	Continuous & Monthly
N26	Redmanvale Road South	Attended	Mine	Monthly

Notes:

1. Sourced from the NMP – WA-ENV-MNP-503, January 2018; and
2. N20 is not an attended noise monitoring location, but is the location of a real-time continuous noise monitor.



- Legend**
- WCM Features
 - WAMBO Monitoring Locations
 - United Wambo Project Area_SSD7142
 - WAMBO_DA_305_7_2003



CRS: GDA/MGA Zone 56s
Date of map creation: 03/12/2019
Source: Google Satellite Hybrid tile

Figure 1: WCM Attended Noise Monitoring Locations

1.3 Terminology & Abbreviations

Definitions of terms and abbreviations which may be used in this report are provided in Table 1.2.

Table 1.2: TERMINOLOGY & ABBREVIATIONS

Descriptor	Definition
dB(A)	Noise level measurement units are decibels (dB). The “A” weighting scale is used to describe human response to noise.
L _{Amax}	The maximum A-weighted noise level over a time period.
L _{A1}	The noise level which is exceeded for 1 per cent of the time.
L _{A1,1minute}	The noise level which is exceeded for 1 per cent of the specified time period of 1 minute.
L _{A10}	The noise level which is exceeded for 10 percent of the time.
L _{Aeq}	The average noise A-weighted energy during a measurement period.
L _{A50}	The noise level which is exceeded for 50 per cent of the time and the median noise level during a measurement period.
L _{A90}	The level exceeded for 90 percent of the time. The L _{A90} level is often referred to as the “background” noise level and is commonly used to determine noise criteria for assessment purposes.
L _{Amin}	The minimum A-weighted noise level over a time period.
L _{Ceq}	The average C-weighted noise energy during a measurement period. The “C” weighting scale is used to take into account low-frequency components of noise within the audibility range of humans.
SPL	Sound pressure level. Fluctuations in pressure measured as 10 times a logarithmic scale, with the reference pressure being 20 micropascals.
Hertz (Hz)	The frequency of fluctuations in pressure, measured in cycles per second. Most sounds are a combination of many frequencies together.
AWS	Automatic weather station used to collect meteorological data, typically at an altitude of 10 metres
VTG	Vertical temperature gradient in degrees Celsius per 100 metres altitude.
Sigma-theta	The standard deviation of the horizontal wind direction over a period of time.
SC	Stability class (or category) is determined from measured wind speed and either sigma-theta or VTG.
IA	Inaudible. When site noise is noted as IA then there was no site noise at the monitoring location.
NM	Not Measurable. If site noise is noted as NM, this means some noise was audible but could not be quantified.
Day	This is the period 7:00am to 6:00pm.
Evening	This is the period 6:00pm to 10:00pm.
Night	This is the period 10:00pm to 7:00am.

2 REGULATOR REQUIREMENTS AND NOISE CRITERIA

2.1 WCM Development Consent

The most current development consent for WCM is DA 305-7-2003 (MOD 16, 29 August 2019). Schedule 2, Part B of the WCM consent details specific conditions relating to noise generated by WCM. Relevant sections of the WCM consent are reproduced in Appendix A.

2.2 WCRS Development Consent

The most current development consent for Wambo Rail Loop is WCRS DA 177-8-2004 (MOD 3, 29 August 2019), last modified to include a rail refuelling facility. Schedule 2, Part B of the WCRS consent details specific conditions relating to noise generated by WCRS. Relevant sections of the WCRS consent are reproduced in Appendix A.

2.3 Environment Protection Licence

WCM holds Environment Protection Licence (EPL) No. 529 issued by the Environment Protection Authority (EPA) most recently on 27 March 2020. Relevant sections of the EPL are reproduced in Appendix A.

2.4 Noise Management Plan

Noise monitoring requirements are detailed in the *Wambo Coal Noise Management Plan WA-ENV-MNP-503* (NMP, January 2020), prepared in accordance with the WCM and WCRS consents. Relevant sections of the NMP are reproduced in Appendix A.

2.5 Noise Criteria

Noise criteria detailed in Table 2.1 have been adopted for each monitoring location based on the development consent (MOD 16) and Condition L5.1 of the EPL.

Table 2.1: WCM NOISE CRITERIA, dB(A)

Location	Day L _{Aeq,15minute}	Evening/Night L _{Aeq,15minute}	Night L _{A1,1minute}
N01 ¹	40	40	50
N16	40	40	50
N20A	40	40	50
N21	40	40	50
N26	38	38	50

Notes:

- Noise criteria for the nearest privately-owned property (R003 – Birrell) have been adopted.

2.6 Meteorological Conditions

Meteorological conditions required for noise criteria to apply are consistent between the consent and EPL.

2.6.1 Development Consent

Appendix 5 of MOD 16 details specific meteorological conditions required for noise criteria to be applicable:

APPENDIX 5 NOISE COMPLIANCE ASSESSMENT

Applicable Meteorological Conditions

1. The noise criteria in condition B12 are to apply under all meteorological conditions except the following:
 - (a) where 3°C/100 metres (m) lapse rates have been assessed, then:
 - (i) wind speeds greater than 3 metres/second (m/s) measured at 10m above ground level;
 - (ii) temperature inversion conditions between 1.5°C and 3°C/100m and wind speeds greater than 2m/s measured at 10m above ground level; or
 - (iii) temperature inversion conditions greater than 3°C/100m.
 - (b) where Pasquill Stability Classes have been assessed, then:
 - (i) wind speeds greater than 3m/s at 10m above ground level;
 - (ii) stability category F temperature inversion conditions and wind speeds greater than 2m/s at 10m above ground level;
 - (iii) stability category G temperature inversion conditions.

As lapse rates (VTG) were not measured directly, meteorological conditions have been assessed against Pasquill stability classes detailed in 1.(b).

2.6.2 Environment Protection Licence

Condition L5.5 of the EPL details meteorological conditions required for noise limits to apply:

- L5.5 The noise limits set out in condition L5.1 apply under all meteorological conditions except for the following:
- a) Wind speeds greater than 3 metres/second at 10 metres above the ground level;
 - b) Stability category F temperature inversion conditions and wind speeds greater than 2 metres/second at 10 metres above ground level; or
 - c) Stability category G temperature inversion conditions.

Condition L5.5 is consistent with stability category conditions outlined in Appendix 5, 1.(b).

2.7 Modifying Factors

The EPA 'Noise Policy for Industry' (NPfI, 2017) was approved for use in NSW in October 2017. For assessment of modifying factors, the NPfI immediately superseded the 'Industrial Noise Policy' (INP, 2000), as outlined in the EPA document 'Implementation and transitional arrangements for the Noise Policy for Industry' (2017). Assessment and reporting of modifying factors has been undertaken in accordance with Fact Sheet C of the NPfI.

3 METHODOLOGY

3.1 Overview

Attended environmental noise monitoring was conducted in general accordance with Australian Standard AS1055 'Acoustics, Description and Measurement of Environmental Noise', relevant NSW EPA requirements, and the NMP. Meteorological data was obtained from the WCM automatic weather station (AWS) which allowed correlation of atmospheric parameters with measured noise levels.

3.2 Attended Noise Monitoring

During this survey, monthly attended monitoring was undertaken during the night period at each location. The duration of each measurement was 15 minutes. Atmospheric condition measurement was also undertaken at each monitoring location.

This survey presents noise levels gathered during attended monitoring that are the result of many sounds reaching the sound level meter microphone during monitoring. Received levels from various noise sources were noted during attended monitoring and particular attention was paid to the extent of WCM/WCRS's contribution, if any, to measured levels. At each receptor location, WCM/WCRS's $L_{Aeq,15\text{minute}}$ and $L_{A1,1\text{minute}}$ (in the absence of any other noise) was measured directly, where possible, or, determined by frequency analysis.

If the exact contribution of the source of interest (in this case WCM and/or WCRS) cannot be established, due to masking by other noise sources in a similar frequency range, but site noise levels are observed to be well below (more than 5 dB lower than) any relevant criterion, a maximum estimate of the potential contribution of the site might be made based on other measured site-only noise descriptors in accordance with Section 7.1 of the NPfI. This is generally expressed as a 'less than' quantity, such as <20 dB or <30 dB.

The terms 'Inaudible' (IA) or 'Not Measurable' (NM) may also be used in this report. When site noise is noted as IA, no site noise was audible at the monitoring location. When site noise is noted as NM, this means some noise was audible but could not be quantified. If site noise was NM due to masking but estimated to be significant in relation to a relevant criterion, we would employ methods (e.g. measure closer and back calculate) to determine a value for reporting.

All sites noted as NM in this report are due to one or more of the following reasons:

- Site noise levels were extremely low and unlikely, in many cases, to be even noticed;
- Site noise levels were masked by another relatively loud noise source that is characteristic of the environment (e.g. breeze in foliage or continuous road traffic noise) that cannot be eliminated by moving closer; and/or
- It was not feasible, nor reasonable to employ methods such as move closer and back calculate. Cases may include, but are not limited to, rough terrain preventing closer measurement, addition/removal of significant source to receiver shielding caused by moving closer, and meteorological conditions where back calculation may not be accurate.

A measurement of $L_{A1,1\text{minute}}$ corresponds to the highest noise level generated for 0.6 second during one minute. In practical terms this is the highest noise level, or $L_{A\text{max}}$, received from the site during the entire measurement period (i.e. the highest level of the worst minute during the 15 minute measurement).

Often extraneous noise events (for example, road traffic pass-bys and dogs) interfere with the measurement of site noise levels in the frequency range of interest. Where required, the sound level meter is paused during these occurrences to aid in quantification of the site only $L_{A\text{eq},15\text{minute}}$ level.

3.3 Meteorological Data

Meteorological data was obtained from the WCM meteorological station; this was logged at 10-minute intervals. Atmospheric parameters include wind speed, wind direction, rainfall and sigma theta. When meteorological data is provided in less than 15 minute intervals, an analysis must be conducted to determine the meteorological conditions present for the majority of each measurement period and whether those conditions result in noise criteria being applicable or not.

3.4 Attended Noise Monitoring Equipment

Equipment used to measure environmental noise levels are listed in Table 3.1. Calibration certificates are provided in Appendix B.

Table 3.1: ATTENDED NOISE MONITORING EQUIPMENT

Model	Serial Number	Calibration Due Date
Rion NA-28 sound level analyser	00370304	29/11/2020
Rion NA-28 sound level analyser	30131882	05/02/2021
Pulsar 106 acoustic calibrator	81334	12/02/2022
Pulsar 105 acoustic calibrator	78226	11/03/2022

3.5 Modifying Factors

All measurements were evaluated for potential modifying factors in accordance with the NPfI. Specific methodology for assessment of each modifying factor is outlined in Fact Sheet C of the NPfI.

Assessment of modifying factors is undertaken at the time of measurement if the site was audible and directly quantifiable, such that the site-only $L_{A\text{eq}}$ was not “NM” or less than a maximum cut off value (e.g. “<20 dB” or “<30dB”).

If applicable, modifying factors have been reported and added to measured site-only $L_{A\text{eq}}$ noise levels when meteorological conditions satisfied requirements for site noise criteria to be applicable. Low-frequency modifying factors have only been applied to site-only $L_{A\text{eq}}$ levels if WCM/WCRS was the only contributing low-frequency noise source.

4 RESULTS

4.1 Plant Locations

During monitoring undertaken on 24/25 August 2020 between 22:00 and 02:00, equipment in operation was as follows:

- Ex211:- First bucket 18:06. Double benching Whynot A waste. All loads to the RL75 dump. Last bucket 03:25.
- Ex212:- First bucket 17:36. Conventionally loading Rider A waste. All loads to the RL120 dump. Last bucket 02:55.
- Ex213:- First bucket 17:33. Double benching Wambo A waste. All loads to the RL120 dump. Last bucket 02:46.
- Ex214:- First bucket 17:59. Conventionally loading Whynot A waste, exposing Whynot A coal. Hard, blocky material at times. All loads to the RL75 dump. Hotseated over crib break. Utilised for overtime. Last bucket 04:50.
- Ex217:- Down for maintenance. Ex218:- First bucket at 18:02. Double benching Wambo A waste. All loads to the RL120 dump. Last bucket at 03:25.
- Ex219:- First bucket at 17:39. Double benching Whynot A waste. Coal is rising in floor, therefore digger changing to conventionally loading during shift. All loads to the RL75 dump. Utilised for overtime. Last bucket at 04:50.
- LD393:- First load at 18:15. Loading Wet Cell Reject from the Bottom ROM. All loads to the RL75 dump. Crew used to hotseat EX214 over crib break. Last load at 01:50.
- 3x watercarts operating and hot-seated

4.2 Total Measured Noise Levels

Overall noise levels measured at each location during attended measurements are provided in Table 4.1. Discussion as to the noise sources responsible for these measured levels is provided in Section 5 of this report.

Table 4.1: MEASURED NOISE LEVELS – AUGUST 2020¹

Location	Start Date and Time	L _{Amax} dB	L _{A1} dB	L _{A10} dB	L _{Aeq} dB	L _{A50} dB	L _{A90} dB	L _{Amin} dB
N01	24/08/2020 22:49	50	43	30	30	26	24	22
N16	24/08/2020 23:13	58	54	47	43	36	32	29
N20A	24/08/2020 22:40	45	41	38	34	32	29	26
N21	24/08/2020 22:22	34	32	27	25	24	22	20
N26	24/08/2020 22:09	44	40	32	30	28	25	22

Notes:

1. Levels in this table are not necessarily the result of activity at WCM or WCRS.

4.3 Modifying Factors

Measured site-only levels were assessed for the applicability of modifying factors in accordance with the NPfI and methodology described in Section 3.5.

There were no modifying factors, as defined in the NPfI, applicable during the survey.

4.4 Attended Noise Monitoring

Table 4.2 to Table 4.3 detail noise levels from WCM in the absence of other noise sources. Noise criteria are applicable if weather conditions during the measurement were within parameters outlined in the WCM development consent.

Table 4.2: $L_{Aeq,15minute}$ GENERATED BY WCM AGAINST PROJECT APPROVAL METEOROLOGICAL CONDITIONS – AUGUST 2020

Location	Start Date and Time	Wind Speed m/s	Stability Category ¹	Criterion $L_{Aeq,15min}$ dB	Criterion Applies? ²	WCM $L_{Aeq,15min}$ dB ^{3,4}	Exceedance ^{4,5}
N01	24/08/2020 22:49	0.6	F	40	Yes	<25	Nil
N16	24/08/2020 23:13	1.0	D	40	Yes	35	Nil
N20A	24/08/2020 22:40	0.1	F	40	Yes	34	Nil
N21	24/08/2020 22:22	0.7	F	40	Yes	25	Nil
N26	24/08/2020 22:09	0.1	F	38	Yes	27	Nil

Notes:

1. Stability Class calculated using sigma theta method provided by NPfI;
2. Noise emission limits identified in the above table apply under all meteorological conditions except wind speeds greater than 3 m/s at 10 metres above ground level; or stability category F temperature inversion conditions and wind speeds greater than 2 m/s at 10 metres above ground level, or stability category G temperature inversion conditions;
3. Site-only $L_{Aeq,15minute}$ attributed to WCM, including modifying factors if applicable;
4. Bold results in red indicate an exceedance of relevant criterion; and
5. NA in exceedance column means atmospheric conditions outside conditions specified in development consent, therefore criterion was not applicable, or there is no applicable criterion.

Table 4.3: $L_{A1,1minute}$ GENERATED BY WCM AGAINST PROJECT APPROVAL METEOROLOGICAL CONDITIONS – AUGUST 2020

Location	Start Date and Time	Wind Speed m/s	Stability Category ¹	Criterion $L_{A1,1min}$ dB	Criterion Applies? ²	WCM $L_{A1,1min}$ dB ^{3,4}	Exceedance ^{4,5}
N01	24/08/2020 22:49	0.6	F	50	Yes	<25	Nil
N16	24/08/2020 23:13	1.0	D	50	Yes	37	Nil
N20A	24/08/2020 22:40	0.1	F	50	Yes	43	Nil
N21	24/08/2020 22:22	0.7	F	50	Yes	34	Nil
N26	24/08/2020 22:09	0.1	F	50	Yes	32	Nil

Notes:

1. Stability Class calculated using sigma theta method provided by NPfI;
2. Noise emission limits identified in the above table apply under all meteorological conditions except wind speeds greater than 3 m/s at 10 metres above ground level; or stability category F temperature inversion conditions and wind speeds greater than 2 m/s at 10 metres above ground level, or stability category G temperature inversion conditions;
3. Site-only $L_{A1,1minute}$ attributed to WCM;
4. Bold results in red indicate an exceedance of relevant criterion; and
5. NA in exceedance column means atmospheric conditions outside conditions specified in development consent, therefore criterion was not applicable, or there is no applicable criterion.

4.5 Atmospheric Conditions

Atmospheric condition data measured by the operator during each measurement using a Kestrel hand-held weather meter is shown in Table 4.4. The wind speed, direction and temperature were measured at approximately 1.8 metres. Attended noise monitoring is not undertaken during rain, hail, or wind speeds above 5 m/s at microphone height.

Table 4.4: MEASURED ATMOSPHERIC CONDITIONS – AUGUST 2020

Location	Start Date and Time	Temperature °C	Wind Speed m/s	Wind Direction ° Magnetic North ¹	Cloud Cover 1/8s
N01	24/08/2020 22:49	4	0.0	-	0
N16	24/08/2020 23:13	5	0.0	-	0
N20A	24/08/2020 22:40	4	0.0	-	0
N21	24/08/2020 22:22	6	0.0	-	0
N26	24/08/2020 22:09	7	0.0	-	0

Notes:

1. "-" indicates calm conditions at monitoring location.

Meteorological data used for compliance assessment is sourced from the WCM AWS.

5 DISCUSSION

5.1 Noted Noise Sources

During attended monitoring, the time variations (temporal characteristics) of noise sources are taken into account in each measurement via statistical descriptors. From these observations, summaries have been derived for each location and provided in this chapter. Statistical 1/3 octave-band analysis of environmental noise was undertaken and the following figures display frequency ranges of various noise sources at each location for LA1, LA10, LAeq, LA50 and LA90 descriptors. These figures also provide, graphically, statistical information for these noise levels.

An example is provided as Figure 2 where it can be seen that frogs and insects are generating noise at frequencies above 1000 Hz while mining noise is at frequencies less than 1000 Hz, which is typical. Adding levels at frequencies that relate to mining only allows separate statistical results to be calculated. This analysis cannot always be performed if there are significant levels of other noise at the same frequencies as mining, such as dogs, cows, or (most commonly) road traffic.

It should be noted that the method of summing statistical values up to a cut-off frequency can overstate the LA1 result by a small margin but is entirely accurate for LAeq.

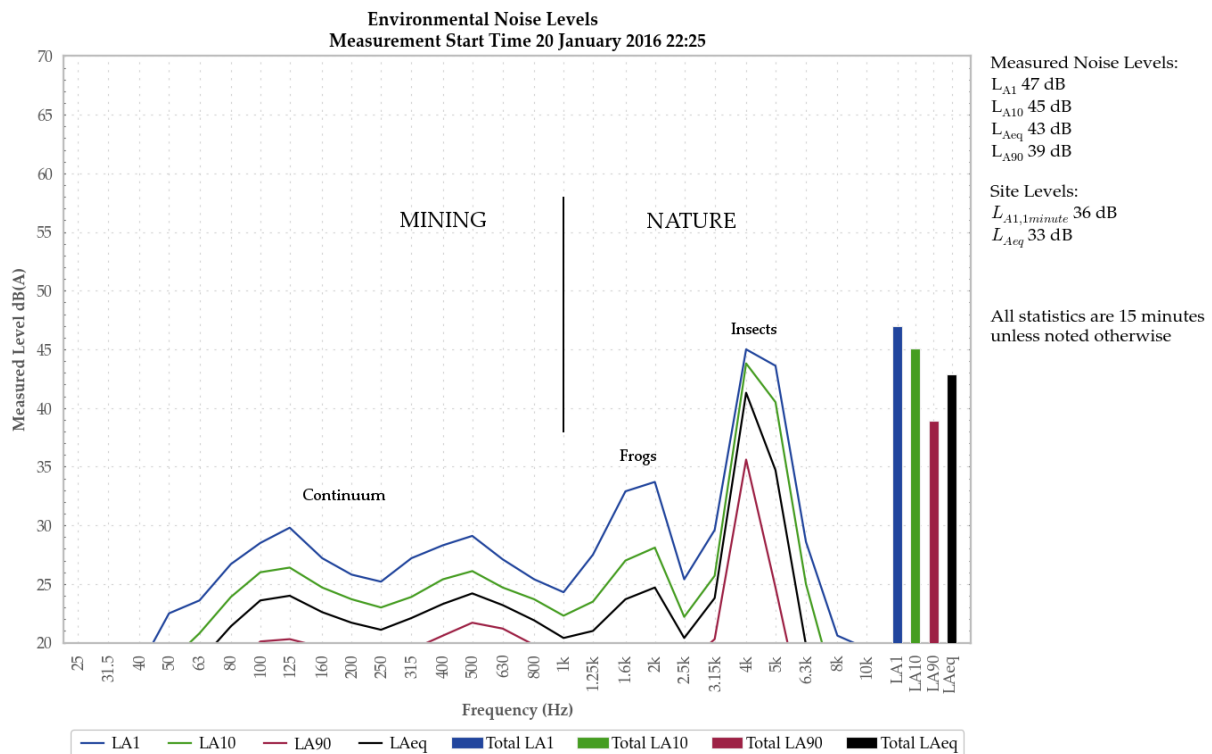


Figure 2: Example Graph (refer to section 5.1 for explanatory note)

5.1.1 N01

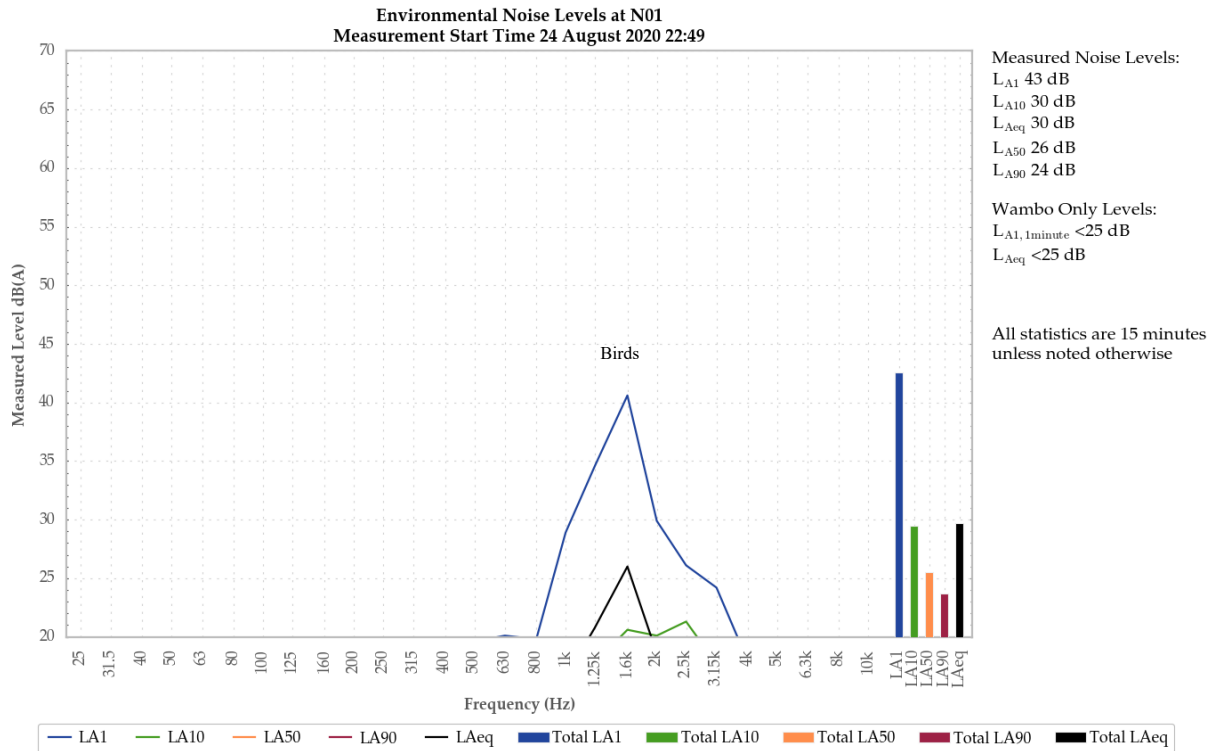


Figure 3: Environmental Noise Levels, N01 – Wambo Road

A mining continuum from WCM was audible at low levels throughout the measurement, generating a site-only LAeq and LA1,1minute of less than 25 dB.

Birds generated the measured LA1, LA10 and LAeq. Continuum from WCM and another mining operation were responsible for the measured LA50 and LA90.

Dogs, frogs and insects were also noted.

5.1.2 N16

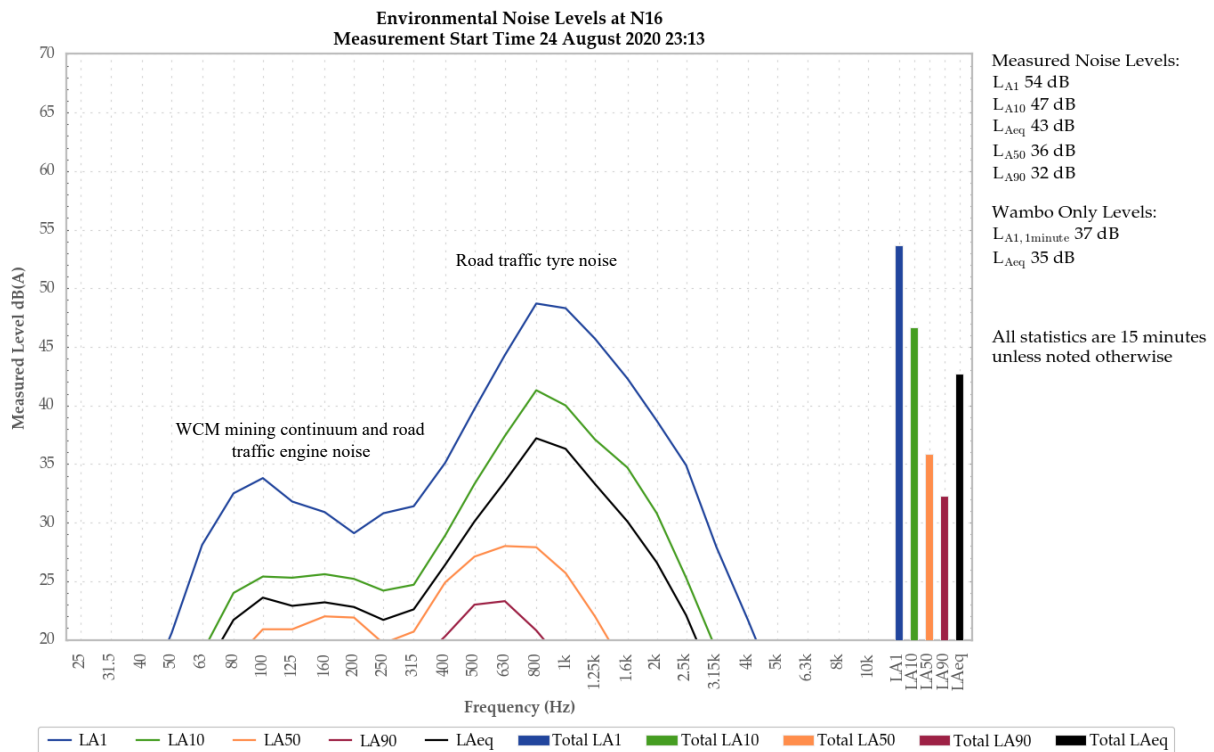


Figure 4: Environmental Noise Levels, N16 – Jerrys Plains Road

A mining continuum from WCM was audible throughout the measurement, generating the measured site-only LAeq of 35 dB. Surges in this continuum generated the site-only LA1,1minute of 37 dB. Impact noise was also noted.

Road traffic noise generated the measured LA1, LA10 and LAeq. WCM continuum was responsible for the measured LA50 and LA90.

Continuum from another mining operation was also noted.

5.1.3 N20A

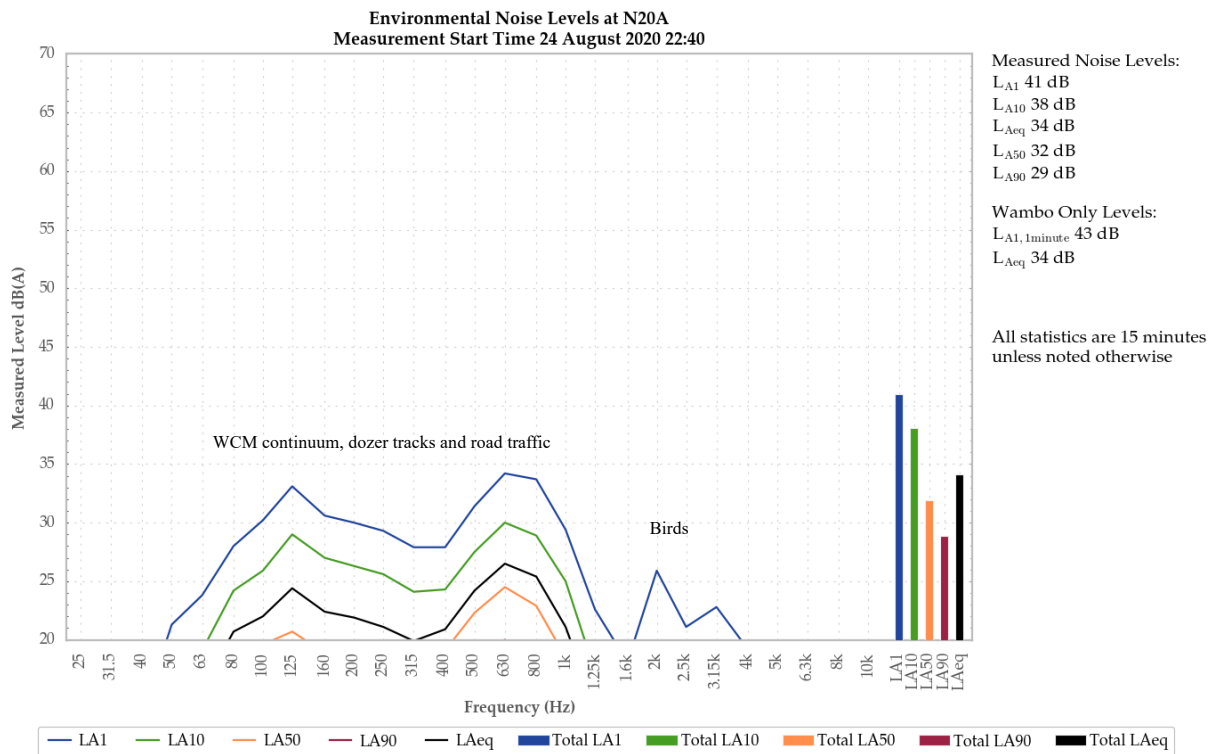


Figure 5: Environmental Noise Levels, N20A – Redmanvale Road Central

A mining continuum and track noise from WCM were audible throughout the measurement, generating the measured site-only L_{Aeq} of 34 dB. Track noise generated the measured site-only L_{A1,1minute} of 43 dB.

WCM continuum was primarily responsible for the measured noise levels. Birds contributed to the measured L_{A1}.

Insects were also noted.

5.1.4 N21

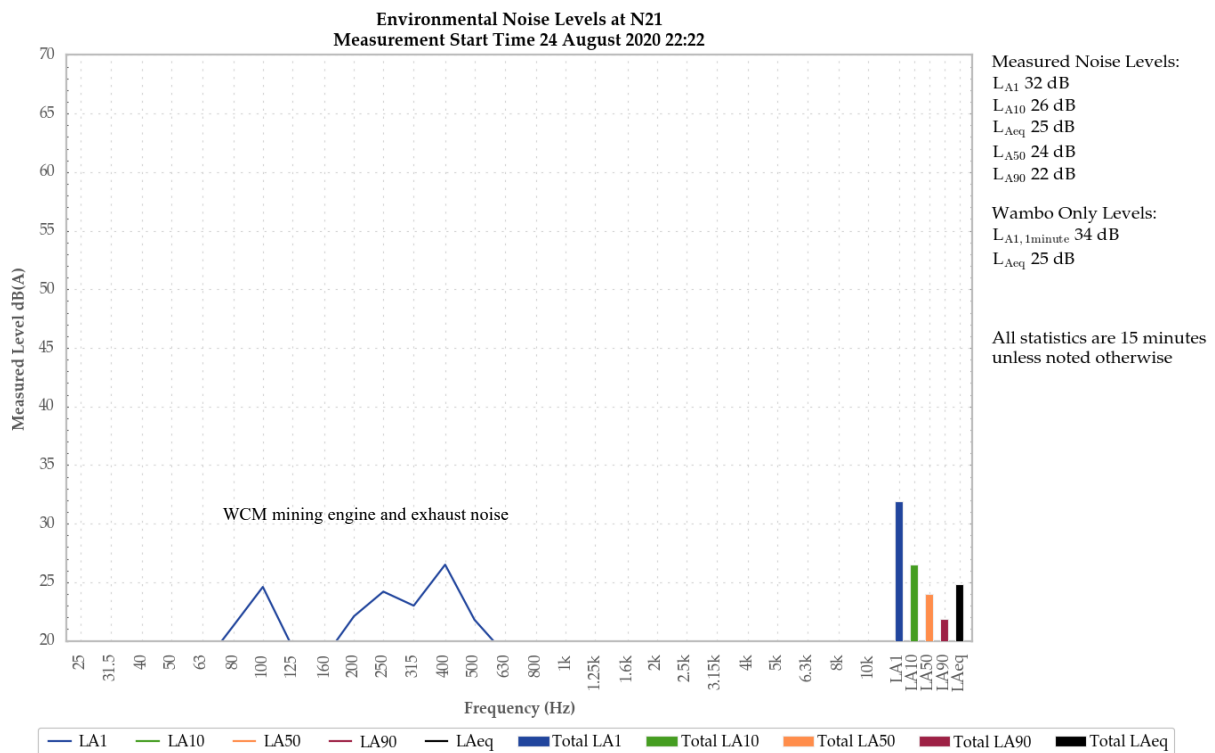


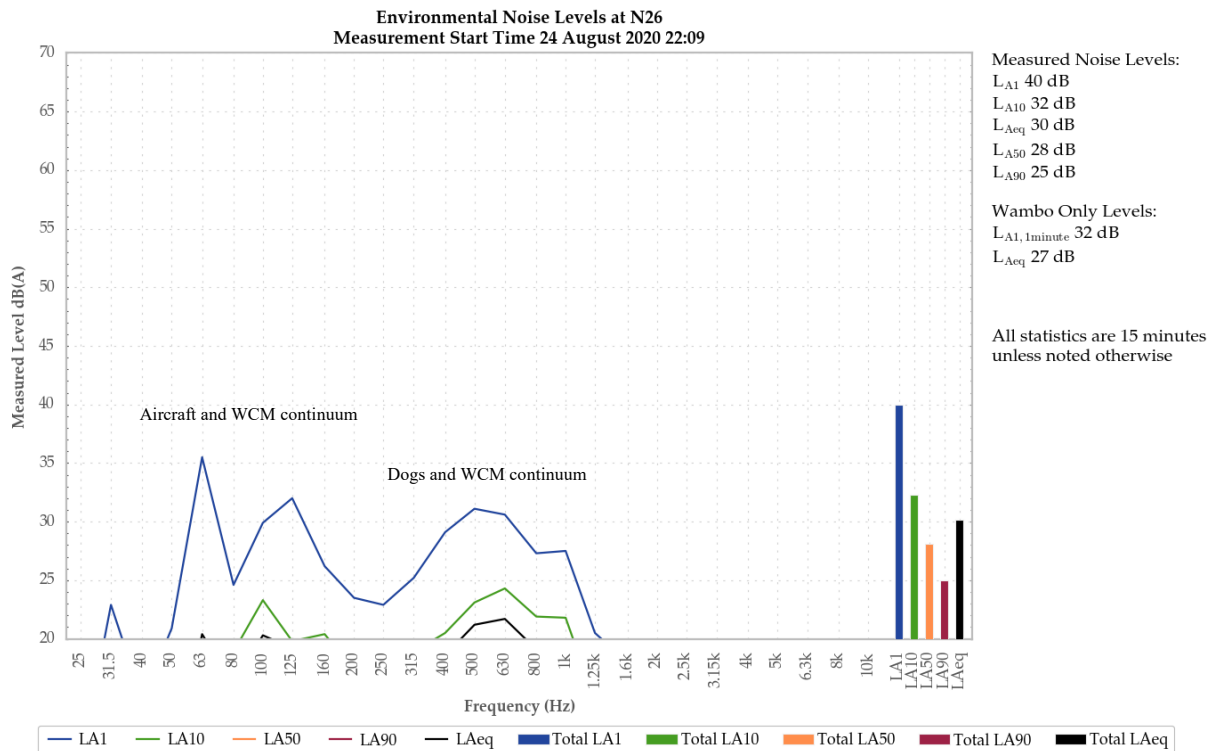
Figure 6: Environmental Noise Levels, N21 – Wambo South

Engine, exhaust and track noise from WCM were audible throughout the measurement, generating a site-only LAeq of 25 dB. Track noise was responsible for the measured site-only LA1,1minute of 34 dB.

Mining noise from WCM generated the measured noise levels.

Frogs and insects were also noted.

5.1.5 N26



A mining continuum from WCM was audible throughout the measurement, generating a site-only LAeq,15minute of 27 dB. An impact generated the site-only LA1,1minute of 32 dB. Track noise was also noted at low levels.

Aircraft and dogs combined with WCM noise sources to generate the measured LA1, LA10 and LAeq. WCM continuum was responsible for the measured LA50 and LA90.

Birds were also noted.

6 SUMMARY

Global Acoustics was engaged by WC to conduct a monthly noise survey of operations at WCM and WCRS. The purpose of the survey is to quantify and describe the existing acoustic environment and compare results with relevant limits.

Attended environmental noise monitoring described in this report was undertaken during the night of 24/25 August 2020 at five monitoring locations.

Noise levels from WCM and WCRS complied with relevant criteria at all monitoring locations during the August 2020 survey. Criteria may not always be applicable due to meteorological conditions at the time of monitoring.

Global Acoustics Pty Ltd

APPENDIX

A *REGULATOR DOCUMENTS*

A.1 WAMBO COAL MINE DEVELOPMENT CONSENT

NOISE

Operational Noise Criteria

- B12. During Phase 1, the Applicant must ensure that the noise generated by the Wambo Mining Complex does not exceed the criteria in Table 3 at any residence^a on privately-owned land.

Table 3: Operational noise criteria dB(A) for Phase 1

Noise Assessment Location	Day <i>L_{Aeq}</i> (15 min)	Evening/Night <i>L_{Aeq}</i> (15 min)	Night <i>L_{A1}</i> (1 min)
R019	59	59	N/A
R003	40	40	50
R016			
R025			
R029			
R033			
R039			
R042			
R320 (previously 15B)	39	39	50
R345 (previously 15B)			
R006			
R007			
R048	38	38	50
R343 (previously 37)			
R017			
R030 (previously 38)			
R035			
R049			
R075			
R346	37	37	50
R348			
R379 (previously 91)			
R043			
R163	36	36	50
R344 (previously 137)			
R380 (previously 246)			
R381 (previously 178)	35	35	50
All other privately-owned residences			

^a The Noise Assessment Locations referred to in Table 3 are shown in Appendix 4.

Noise Management Plan

- B17. The Applicant must prepare a Noise Management Plan for the Wambo Mining Complex to the satisfaction of the Planning Secretary. This plan must:
- (a) be prepared by a suitably qualified and experienced person/s;
 - (b) be prepared in consultation with the EPA;
 - (c) describe the measures to be implemented to ensure:
 - (i) compliance with the noise criteria and operating conditions in this consent;
 - (ii) best practice management is being employed; and
 - (iii) noise impacts of the development are minimised during noise-enhancing meteorological conditions under which the noise criteria in this consent do not apply (see Appendix 5);
 - (d) seek to minimise road traffic noise generated by employee commuter vehicles on public roads;
 - (e) describe the noise management system in detail; and
 - (f) include a monitoring program that:
 - (i) uses a combination of real-time and supplementary attended monitoring to evaluate the performance of the development;
 - (ii) includes a program to calibrate and validate the real-time noise monitoring results with the attended monitoring results over time;
 - (iii) adequately supports the noise management system; and
 - (iv) includes a protocol for distinguishing noise emissions between the Wambo Mining Complex and United Wambo open cut coal mine; and
 - (v) includes a protocol for identifying any noise-related exceedance, incident or non-compliance and for notifying the Department and relevant stakeholders of any such event.
- B18. The Applicant must not commence Phase 2 until the Noise Management Plan is approved by the Planning Secretary.
- B19. The Applicant must implement the Noise Management Plan as approved by the Planning Secretary.

A.2 WAMBO RAIL SPUR DEVELOPMENT CONSENT

NOISE

Noise Operating Conditions

B1. The Applicant must:

- (a) take all reasonable steps to minimise all noise associated with the development, including during noise-enhancing meteorological conditions;
- (b) operate a noise management system commensurate with the risk of impact to ensure compliance with the relevant conditions of this consent;
- (c) only use locomotives and rolling stock that are approved to operate on the NSW rail network in accordance with the noise limits in ARTC's EPL and use reasonable endeavours to ensure that rolling stock is selected to minimise noise;
- (d) use all reasonable efforts to co-ordinate noise management on the site with the noise management at Wambo mine; and
- (e) carry out regular attended noise monitoring to determine whether the development is complying with the relevant conditions of this consent.

ACQUISITION UPON REQUEST

- C1. Upon receiving a written request for acquisition from the owner of the privately-owned land^a listed in Table 3, the Applicant must acquire the land in accordance with the procedures in conditions C3 to C10, inclusive.

Table 3: Land subject to acquisition upon request

R019

^a The location of the land referred to in Table 3 is shown on the figure in Appendix 3.

A.3 ENVIRONMENT PROTECTION LICENCE 529

L5 Noise limits

L5.1 Noise generated at the premises must not exceed the noise limits presented in the table below. The noise limits in the table below represent the noise contribution from the premises.

Receiver Land Number	Day LAeq(15 minute)	Evening LAeq(15 minute)	Night LAeq(15 minute)	Night LA1(1 minute)
EPA Point 20 in NMG1	40	40	40	50
EPA Point 21 in NMG2	40	40	40	50
EPA Point 22 in NMG3	40	40	40	50
EPA Point 23 in NMG4	38	38	38	50
Residence 019	59	59	59	
Residence 003 and 025 in NMG3	40	40	40	50
Residence 016 and 039 in NMG1	40	40	40	50
Residence 029, 042 and 345 in NMG4	40	40	40	50
Residence 033 and 320 in NMG2	40	40	40	50
Residence 006 and 007 in NMG3	39	39	39	50
Residence 048 and 343	39	39	39	50
Residence 017 in NMG1	38	38	38	50
Residence 030, 035, 049, 075 and 379	38	38	38	50
Residence 346 and 348 in NMG4	38	38	38	50
Residence 344 in NMG2	37	37	37	50
Residence 043, 163, 380 and 381	37	37	37	50
All other privately owned residences in Appendix 4 of DA 305-7-2003 29 August 2019	35	35	35	50

- L5.2 Limits and Residences referenced in condition L5.1 are from Appendix 4 and Table 3 - Phase 1 in DA 305-7-2003 dated 29 August 2019 (EPA Reference DOC19/1117963).
- L5.3 Noise monitoring groups (NMG) referenced in Condition 5.1 are from the document titled "*Wambo Coal Mine Noise Monitoring Groups Noise Modelling Evaluation*" Global Acoustics dated 16 August 2019, EPA Reference DOC19/704212.
- L5.4 For the purpose of Condition L5.1:
- a) Day is defined as the period from 7am to 6pm Monday to Saturday and 8am to 6pm Sundays and Public Holidays;
 - b) Evening is defined as the period from 6pm to 10pm; and
 - c) Night is defined as the period from 10pm to 7am Monday to Saturday and 10pm to 8am Sundays and Public Holidays.
- L5.5 The noise limits set out in condition L5.1 apply under all meteorological conditions except for the following:
- a) Wind speeds greater than 3 metres/second at 10 metres above the ground level;
 - b) Stability category F temperature inversion conditions and wind speeds greater than 2 metres/second at 10 metres above ground level; or
 - c) Stability category G temperature inversion conditions.
- L5.6 For the purposes of condition L5.5:
- a) Data recorded by the closest and most representative meteorological station installed on the premises at EPA Identification Point 17 must be used to determine meteorological conditions; and
 - b) Temperature inversion conditions (stability category) are to be determined by the methods referred to in Fact Sheet D of the Noise Policy for Industry (2017).

M10 Noise monitoring

M10.1 To assess compliance with the noise limits specified within this licence, the licensee must undertake operator attended noise monitoring at each specified noise monitoring point in accordance with the table below.

POINT 20,21,22,23

Assessment period	Minimum frequency in a reporting period	Minimum duration within assessment period	Minimum number of assessment period
Night	Monthly	15 minutes	1 operation day

M10.2 To assess compliance with condition L5.1, attended noise monitoring must be undertaken in accordance with Conditions L5.4 to L5.6:

- a) at the EPA points 20,21,23 and 23 identified in P1.3;
- b) occur every calendar month in a reporting period; and
- c) occur during one night time period as defined in the Noise Policy for Industry 2017 for a minimum of 15 minutes at each location from a), and when relevant b) during the night.

M10.3 For the purposes of compliance monitoring and determining the noise generated at the premises the modification factors in the EPA's Fact Sheet C of the Noise Policy for Industry (2017) must be applied, as appropriate, to the noise levels measured by noise monitoring equipment.

Definitions

Noise refers to 'sound pressure levels' for the purpose of conditions L5.1 to L5.6 and condition M10.

A.4 WCM Noise Management Plan

5.0 Noise Monitoring Program

5.1 Noise Monitoring Network

WCPL has established a noise monitoring network to assess the noise performance of the operation against the noise impact assessment criteria provided in **Section 3.1**. The noise monitoring network (refer to **Table 6** and **Figure 5**) consists of:

- Four real time noise monitors (unattended noise monitoring); and
- Six attended noise monitoring locations.

The location and type of monitoring equipment in the noise monitoring network has been strategically chosen and positioned around the operation to provide noise monitoring coverage.

Table 6: Attended and Unattended Noise Monitoring Locations

Site Ref	Residence	Type	Location	Frequency	Approximate Co-ordinates (MGA 94, z56)	
					Northing	Easting
N01	Wambo Road Residence	Attended	Mine & Rail Spur	Monthly	6388696	313352
N03	Kelly Residence	Real-Time & Attended	Mine & Rail Spur	Continuous & Monthly	6394362	314207
N16	Jerrys Plains Road	Attended	Mine	Monthly	6399785	306000
N20A	Redmanvale Road Central	Attended	Mine	Monthly	6399100	304666
N20	Redmanvale Road Central	Real-Time	Mine	Continuous	6398504	304518
N21	Wambo South	Real-Time & Attended	Mine & Rail Spur	Continuous & Monthly	6390149	310586
N26	Redmanvale Road South	Attended	Mine	Monthly	6398160	304172

5.3 Attended Noise Monitoring

WCPL attended noise monitoring has been carried out monthly since January 2014. The monitoring is conducted by a WCPL appointed acoustic specialist who measures and describes the acoustic environment at each attended monitoring location. The attended noise monitoring results are compared with noise impact assessment criteria (as defined in **Section 3.1**) to assess compliance. Attended noise monitoring is considered the preferred method for determining compliance with prescribed limits because it allows for an accurate determination of the contribution, if any, made by industrial noise sources to measured ambient noise levels.

Operator attended noise measurements are conducted during night period² operations to quantify noise emissions from WCPL as well as the overall level of ambient noise.

Noise levels (LA_{max} and LA_{eq}) from the Mine are quantified over a 15 minute measurement period. In addition, the overall levels of ambient noise (i.e. LA_{max} , LA_1 , LA_{10} , LA_{50} , LA_{90} , and LA_{eq}) over the 15 minute period will be quantified and characterised.

Attended noise monitoring will be conducted at a representative location in accordance with the NPfl and Australian Standard AS 1055 '*Acoustics, Description and Measurement of Environmental Noise*'.

In accordance with Condition 7B, Schedule 4 of DA 177-8-2004, quarterly attended monitoring at the Kelly residence (N03) was undertaken to coincide with train refuelling, during the first 12 months of operation of the Wambo rail loop³ locomotive provisioning facility. Following a demonstrated history of compliance, the monitoring has ceased. Monitoring will be reactivated if triggered by a resident complaint or a significant change or amendment to the approved operations at the locomotive provisioning facility.

Measurement of rail pass-by noise levels was removed from the monitoring program in Version 5 of the NMP, following a demonstrated history of compliance. Monitoring will be recommenced if triggered by complaint, or change in rolling stock used to transport coal from WCPL.

Meteorological data from the WCPL meteorological station will be utilised to correlate atmospheric parameters and measured noise levels. Ground level atmospheric condition measurement is also undertaken during attended monitoring. Noise criteria only apply in meteorological conditions specified in the conditions (**Section 3.1**).

The modified DEFRA method (as described in Downey and Parnell [2017]) will be used to identify noise from the Mine with dominant low frequency content. Modifying factors will be applied in accordance with the NPfl.

APPENDIX

B CALIBRATION CERTIFICATES



Level 7 Building 2 423 Pennant Hills Rd
Pennant Hills NSW AUSTRALIA 2120
Ph: +61 2 9484 0800 A.B.N. 65 160 399 119
www.acousticresearch.com.au

Sound Level Meter
IEC 61672-3:2013
Calibration Certificate
Calibration Number C18618

Client Details	Global Acoustics Pty Ltd 12/16 Huntingdale Drive Thornton NSW 2322
Equipment Tested/ Model Number :	Rion NA-28
Instrument Serial Number :	00370304
Microphone Serial Number :	10421
Pre-amplifier Serial Number :	60313
Pre-Test Atmospheric Conditions	Post-Test Atmospheric Conditions
Ambient Temperature : 23.6°C	Ambient Temperature : 22.4°C
Relative Humidity : 42.6%	Relative Humidity : 42.4%
Barometric Pressure : 98.42kPa	Barometric Pressure : 98.45kPa
Calibration Technician : Lucky Jaiswal	Secondary Check: Lewis Boorman
Calibration Date : 26 Nov 2018	Report Issue Date : 29 Nov 2018
Approved Signatory :	Ken Williams

Clause and Characteristic Tested	Result	Clause and Characteristic Tested	Result
12: Acoustical Sig. tests of a frequency weighting	Pass	17: Level linearity incl. the level range control	Pass
13: Electrical Sig. tests of frequency weightings	Pass	18: Toneburst response	Pass
14: Frequency and time weightings at 1 kHz	Pass	19: C Weighted Peak Sound Level	Pass
15: Long Term Stability	Pass	20: Overload Indication	Pass
16: Level linearity on the reference level range	Pass	21: High Level Stability	Pass

The sound level meter submitted for testing has successfully completed the class 1 periodic tests of IEC 61672-3:2013, for the environmental conditions under which the tests were performed.

As public evidence was available, from an independent testing organisation responsible for approving the results of pattern evaluation test performed in accordance with IEC 61672-2:2013, to demonstrate that the model of sound level meter fully conformed to the requirements in IEC 61672-1:2013, the sound level meter submitted for testing conforms to the class 1 requirements of IEC 61672-1:2013.

Least Uncertainties of Measurement -			
Acoustic Tests		Environmental Conditions	
31.5 Hz to 8kHz	±0.12dB	Temperature	±0.05°C
12.5kHz	±0.18dB	Relative Humidity	±0.46%
16kHz	±0.51dB	Barometric Pressure	±0.017kPa
Electrical Tests			
31.5 Hz to 20 kHz	±0.12dB		

All uncertainties are derived at the 95% confidence level with a coverage factor of 2.



This calibration certificate is to be read in conjunction with the calibration test report.
Acoustic Research Labs Pty Ltd is NATA Accredited Laboratory Number 14172.
Accredited for compliance with ISO/IEC 17025 - calibration.
The results of the tests, calibrations and/or measurements included in this document are traceable to Australian/national standards.
NATA is a signatory to the ILAC Mutual Recognition Arrangement for the mutual recognition of the equivalence of testing, medical testing, calibration and inspection reports.



Level 7 Building 2 423 Pennant Hills Rd
Pennant Hills NSW AUSTRALIA 2120
Ph: +61 2 9484 0800 A.B.N. 65 160 399 119
www.acousticresearch.com.au

Sound Level Meter
IEC 61672-3:2013
Calibration Certificate
Calibration Number C19073

Client Details	Global Acoustics Pty Ltd 12/16 Huntingdale Drive Thornton NSW 2322
Equipment Tested/ Model Number :	NA-28
Instrument Serial Number :	30131882
Microphone Serial Number :	04739
Pre-amplifier Serial Number :	11942
Pre-Test Atmospheric Conditions	Post-Test Atmospheric Conditions
Ambient Temperature : 24.5°C	Ambient Temperature : 23.6°C
Relative Humidity : 54.5%	Relative Humidity : 51%
Barometric Pressure : 99.39kPa	Barometric Pressure : 99.36kPa
Calibration Technician : Charlie Neil	Secondary Check: Lewis Boorman
Calibration Date : 5 Feb 2019	Report Issue Date : 6 Feb 2019
Approved Signatory :	Ken Williams

Clause and Characteristic Tested	Result	Clause and Characteristic Tested	Result
12: Acoustical Sig. tests of a frequency weighting	Pass	17: Level linearity incl. the level range control	Pass
13: Electrical Sig. tests of frequency weightings	Pass	18: Toneburst response	Pass
14: Frequency and time weightings at 1 kHz	Pass	19: C Weighted Peak Sound Level	Pass
15: Long Term Stability	Pass	20: Overload Indication	Pass
16: Level linearity on the reference level range	Pass	21: High Level Stability	Pass

The sound level meter submitted for testing has successfully completed the class 1 periodic tests of IEC 61672-3:2013, for the environmental conditions under which the tests were performed.

As public evidence was available, from an independent testing organisation responsible for approving the results of pattern evaluation test performed in accordance with IEC 61672-2:2013, to demonstrate that the model of sound level meter fully conformed to the requirements in IEC 61672-1:2013, the sound level meter submitted for testing conforms to the class 1 requirements of IEC 61672-1:2013.

Least Uncertainties of Measurement -		Environmental Conditions	
Acoustic Tests		Temperature	±0.2°C
31.5 Hz to 8kHz	±0.15dB	Relative Humidity	±2.4%
12.5kHz	±0.2dB	Barometric Pressure	±0.015kPa
16kHz	±0.29dB		
Electrical Tests			
31.5 Hz to 20 kHz	±0.11dB		

All uncertainties are derived at the 95% confidence level with a coverage factor of 2.



This calibration certificate is to be read in conjunction with the calibration test report.

Acoustic Research Labs Pty Ltd is NATA Accredited Laboratory Number 14172
Accredited for compliance with ISO/IEC 17025 - calibration.

The results of the tests, calibrations and/or measurements included in this document are traceable to Australian national standards.

NATA is a signatory to the ILAC Mutual Recognition Arrangement for the mutual recognition of the equivalence of testing, medical testing, calibration and inspection reports.



**Acoustic
Research
Labs Pty Ltd**

Unit 36/14 Loyalty Rd
North Rocks NSW AUSTRALIA 2151
Ph: +61 2 9484 0800 A.B.N. 65 160 399 119
www.acousticresearch.com.au

**Sound Calibrator
IEC 60942-2017**

Calibration Certificate

Calibration Number C20082

Client Details Global Acoustics Pty Ltd
12/16 Huntingdale Drive
Thornton NSW 2322

Equipment Tested/ Model Number : Pulsar Model 106
Instrument Serial Number : 81334

Atmospheric Conditions

Ambient Temperature : 24.6°C
Relative Humidity : 48.9%
Barometric Pressure : 99.8kPa

Calibration Technician : Lucky Jaiswal
Calibration Date : 12 Feb 2020
Secondary Check: Max Moore
Report Issue Date : 13 Feb 2020

Approved Signatory :

Ken Williams

Characteristic Tested	Result
Generated Sound Pressure Level	Pass
Frequency Generated	Pass
Total Distortion	Pass

	Nominal Level	Nominal Frequency	Measured Level	Measured Frequency
Measured Output	94.0	1000.0	94.1	1000.35

The sound calibrator has been shown to conform to the class 2 requirements for periodic testing, described in Annex B of IEC 60942:2017 for the sound pressure level(s) and frequency(ies) stated, for the environmental conditions under which the tests were performed.

Specific Tests	Least Uncertainties of Measurement -		
	Environmental Conditions		
Generated SPL	±0.14dB	Temperature	±0.2°C
Frequency	±0.01%	Relative Humidity	±2.4%
Distortion	±0.5%	Barometric Pressure	±0.015kPa

All uncertainties are derived at the 95% confidence level with a coverage factor of 2.

* The tests <1000 kHz are not covered by Acoustic Research Labs Pty Ltd NATA accreditation.



This calibration certificate is to be read in conjunction with the calibration test report.

Acoustic Research Labs Pty Ltd is NATA Accredited Laboratory Number 14172.
Accredited for compliance with ISO/IEC 17025 - calibration.

The results of the tests, calibrations and/or measurements included in this document are traceable to SI units.

NATA is a signatory to the ILAC Mutual Recognition Arrangement for the mutual recognition of the equivalence of testing, medical testing, calibration and inspection reports.

PAGE 1 OF 1



Sound Calibrator
IEC 60942-2017

Calibration Certificate

Calibration Number C20155

Client Details Global Acoustics Pty Ltd
12/16 Huntingdale Dr
Thornton NSW 2322

Equipment Tested/ Model Number : Pulsar Model 105
Instrument Serial Number : 78226

Atmospheric Conditions

Ambient Temperature : 23.4°C
Relative Humidity : 53.8%
Barometric Pressure : 101.2kPa

Calibration Technician : Lucky Jaiswal
Calibration Date : 11 Mar 2020
Secondary Check: Alannah Squires
Report Issue Date : 12 Mar 2020

Approved Signatory :  Ken Williams

Characteristic Tested	Result
Generated Sound Pressure Level	Pass
Frequency Generated	Pass
Total Distortion	Pass

Nominal Level	Nominal Frequency	Measured Level	Measured Frequency
94	1000	94.13	1000.37

The sound calibrator has been shown to conform to the class 1 requirements for periodic testing, described in Annex B of IEC 60942:2017 for the sound pressure level(s) and frequency(ies) stated, for the environmental conditions under which the tests were performed.

Least Uncertainties of Measurement -			
Specific Tests		Environmental Conditions	
Generated SPL	±0.14dB	Temperature	±0.2°C
Frequency	±0.09%	Relative Humidity	±2.4%
Distortion	±0.09%	Barometric Pressure	±0.015kPa

All uncertainties are derived at the 95% confidence level with a coverage factor of 2.

* The tests <1000 kHz are not covered by Acoustic Research Labs Pty Ltd NATA accreditation.



This calibration certificate is to be read in conjunction with the calibration test report.

Acoustic Research Labs Pty Ltd is NATA Accredited Laboratory Number 14172.
Accredited for compliance with ISO/IEC 17025 - calibration.

The results of the tests, calibrations and/or measurements included in this document are traceable to SI units

NATA is a signatory to the ILAC Mutual Recognition Arrangement for the mutual recognition of the equivalence of testing, medical testing, calibration and inspection reports.

PAGE 1 OF 1

Scanned with CamScanner