

# WAMBO COAL PTY LIMITED



## SOUTH BATES EXTENSION UNDERGROUND MINE

### EXTRACTION PLAN LONGWALLS 24 TO 26

#### APPENDIX H SUBSIDENCE MONITORING PROGRAM

**Peabody**

WAMBO COAL PTY LIMITED  
SOUTH BATES EXTENSION UNDERGROUND MINE

SUBSIDENCE MONITORING PROGRAM  
LONGWALLS 24 - 26



PREPARED BY  
WAMBO COAL PTY LIMITED

November 2024  
Project No. WAM-09-15  
Document No. 1254955

## DOCUMENT CONTROL

<b>Document No.</b>	SMP LW24-26
<b>Title</b>	Subsidence Monitoring Program for South Bates Extension Underground Mine Longwalls 24 to 26
<b>General Description</b>	Monitoring program for subsidence effects for mining of Longwalls 24 to 26 at the South Bates Extension Underground Mine

### Revisions

Rev No	Date	Description	By	Checked
A	June 2023	Final for Submission	WCPL	ND
B	October 2023	Minor changes to incorporate agency consultation comments and DPE comments	WCPL and Resource Strategies	-
C	November 2023	Minor revisions to incorporate additional DPE comments	WCPL and Resource Strategies	-
D	November 2024	Updated to include revised mine layout of Longwalls 24-26	WCPL and Resource Strategies	

The nominated Coordinator for this document is	Technical Services Superintendent
------------------------------------------------	-----------------------------------

## TABLE OF CONTENTS

<u>Section</u>		<u>Page</u>
1	INTRODUCTION	1
2	SCOPE	1
3	SUBSIDENCE EFFECTS MONITORING AND REPORTING	2
	3.1 SUBSIDENCE MONITORING DETAILS	2
	3.2 SURVEY ACCURACY AND FREQUENCY	3
	3.3 SUBSIDENCE EFFECTS RECORDING AND REPORTING	3
4	MONITORING OF ENVIRONMENTAL CONSEQUENCES	5
5	ROLES AND RESPONSIBILITIES	13
6	REFERENCES	13

### LIST OF TABLES

Table 1	Subsidence Effects Monitoring Program Summary
Table 2	Longwalls 24 to 26 Monitoring Program Summary
Table 3	Subsidence Monitoring Program Responsibilities Summary

### LIST OF FIGURES

Figure 1	Locations of Surface Water and Groundwater Monitoring Sites
Figure 2	Locations of Relevant Biodiversity Monitoring Sites

### LIST OF ATTACHMENTS

Attachment 1	Existing and Proposed Subsidence Monitoring Lines
Attachment 2	Subsidence Impact Register

## 1 INTRODUCTION

The Wambo Coal Mine is an open cut and underground coal mining operation located approximately 15 kilometres (km) west of Singleton, near the village of Warkworth, New South Wales (NSW). The Wambo Coal Mine is owned and operated by Wambo Coal Pty Limited (WCPL), a subsidiary of Peabody Energy Australia Pty Limited.

The potential environmental impacts of the existing Wambo Coal Mine were assessed in the *Wambo Development Project Environmental Impact Statement* (WCPL, 2003). Development Consent DA 305-7-2003 for the Wambo Coal Mine was granted on 4 February 2004 by the then NSW Minister for Urban Affairs and Planning under Part 4 of the NSW *Environmental Planning and Assessment Act, 1979*.

The South Bates Extension Underground Mine is a component of the approved Wambo Coal Mine. An application to modify the Development Consent (DA 305-7-2003 MOD 19) to allow for the optimisation and continued operations of the South Bates Extension Underground Mine through the reorientation of Longwalls 24 and 25, and the addition of Longwall 26 (WCPL, 2022) was approved on 25 January 2023. The application was accompanied by the *Longwall 24 to 26 Modification Report* (WCPL, 2022).

The South Bates Extension Underground Mine commenced in Longwall 17 in December 2018 and involves extraction of coal by longwall mining methods from the Whybrow Seam within Coal Lease (CL) 397, Mining Lease (ML) 1594, ML 1572, ML 1806 and [ML 1873](#).

## 2 SCOPE

**Purpose:** This Subsidence Monitoring Program (SMP) for Longwalls 24 to 26 outlines the monitoring program for subsidence effects for mining of Longwalls 24 to 26 at the South Bates Extension Underground Mine.

**Scope:** This SMP covers the Longwalls 24 to 26 Application Area.

This SMP has been prepared in accordance with Condition B7(e) of Schedule 2 of the Development Consent (DA 305-7-2003), as a component of the South Bates Extension Underground Mine Longwalls 24 to 26 Extraction Plan.

This program has been prepared in consideration of the *Extraction Plan Guideline* (Department of Planning and Environment [DPE], 2022), which requires:

- proposed subsidence monitoring activities, including the use of land-based and/or satellite and other remote survey techniques and the accuracy of proposed techniques;
- information or subsidence parameters to be obtained from each monitoring activity;
- proposed locations and/or extents where each monitoring activity will take place – in particular, the proposed layout and/or locations of instrumentation, monitoring points or inspections (including plans);
- proposed timing, frequency and duration of each monitoring activity;
- proposed monitoring methods and technologies and industry standards or Codes of Practice to be applied in undertaking each monitoring activity;
- proposed measures and procedures for quality assurance and competence of personnel undertaking monitoring activities;
- proposed procedures to record monitoring results;

- proposed reporting of monitoring results, including the frequency of reporting, which will depend on the nature of the risk; and
- capacity of the program to detect early warning of deviations from the consent's performance measures and associated performance indicators.

Proposed monitoring and reporting of subsidence effects for Longwalls 24 to 26 is described in **Section 3**. A summary of monitoring of subsidence impacts and environmental consequences is described in **Section 4**.

This SMP has been prepared by WCPL. The appointment of the team of suitably qualified and experienced experts (which includes representatives from WCPL) has been endorsed by the Secretary of the DPE.

### 3 SUBSIDENCE EFFECTS MONITORING AND REPORTING

#### 3.1 SUBSIDENCE MONITORING DETAILS

Subsidence monitoring lines are monitored until negligible change in subsidence is detected. Discontinuance of survey of these lines will be totally at the discretion of the Principal Subsidence Engineer (NSW Resources Regulator).

The monitoring lines for Longwalls 24 to 26 (Lines CL24A, CL26A, 9XL, 10XL) will be installed as star pickets driven to refusal with a mark then punched into the top and labelled. The marks will be capped with a protective cover that will be removed during survey.

Survey pegs shall generally be a minimum of 10 metres (m) and a maximum of 20 m apart.

Surveys shall be carried out using either differential levelling to class LC accuracy or Trig heightening methods to an accuracy of Class B as specified in the Inter-Governmental Committee on Surveying and Mapping Special Publication 1.

Light Detection and Ranging (LiDAR) monitoring lines (Lines CL24A and CL26A) will be analysed by creating a surface profile along the line from 3 dimensional LiDAR data. The potential for survey error due to displacement of the data will be minimised through the use of fixed reference points outside the angle of draw. This data will be used to provide an estimate of the actual angle of draw to the limit of vertical subsidence data at the commencement ends. LiDAR analysis is considered the most suitable monitoring method given the terrain constraints the ability to use other survey methods.

Details of any subsidence impacts observed will be recorded in the Subsidence Impact Register with visual observations documented in the Subsidence Impact Register Assessment Form (**Attachment 2**). Visual inspections will be undertaken in accordance with the inspection checklist provided in **Attachment 2**. The Subsidence Impact Register will be maintained as an electronic spreadsheet on-site, with hard copies of assessment forms filed in a folder.

The data collected under this monitoring program for Longwalls 24 to 26 will be provided to the NSW Resources Regulator in a timely fashion and a suitable format.

### **3.2 SURVEY ACCURACY AND FREQUENCY**

The prescribed accuracy, as defined by the Inter-Governmental Committee on the Survey and Mapping Special Publication 1 (ICSM SP1) and the required frequency of the surveys can be seen in **Table 1**.

### **3.3 SUBSIDENCE EFFECTS RECORDING AND REPORTING**

Subsidence survey data for the South Bates Extension Underground Mine will be stored by WCPL in a centralised database, with results from each survey clearly demarcated.

Subsidence survey data will be provided to the Principal Subsidence Engineer (NSW Resources Regulator) promptly following each survey. Subsidence effects will also be reported under the reporting framework of the Extraction Plan.

**Table 1**  
**Subsidence Effects Monitoring Program Summary**

Survey Line	Data Type	Survey Accuracy Classification	Survey Frequency	Survey Status
Visual Inspections	As per the Subsidence Impact Register provided in <b>Attachment 2</b>	N/A	<ul style="list-style-type: none"> <li>• Within 1 month of longwall extraction that may cause surface movement.</li> <li>• 3 monthly or more frequent in areas of significance such as creeks, roads and buildings.</li> </ul>	<ul style="list-style-type: none"> <li>• As per monitoring program.</li> </ul>
Line 9XL	z (level and strain distances)	ICSM Class B or LC	<ul style="list-style-type: none"> <li>• Twice prior to longwall extraction that will cause surface movement.</li> <li>• After completion of each longwall block.</li> </ul>	<ul style="list-style-type: none"> <li>• Line to be installed and surveyed prior to commencement of mining.</li> </ul>
Line 10XL	z (level and strain distances)	ICSM Class B or LC	<ul style="list-style-type: none"> <li>• Twice prior to longwall extraction that will cause surface movement.</li> <li>• After completion of each longwall block.</li> </ul>	<ul style="list-style-type: none"> <li>• Line to be installed and surveyed prior to commencement of mining.</li> </ul>
Line CL24A	z (level and strain distances)	ICSM Class B or LC	<ul style="list-style-type: none"> <li>• Twice prior to longwall extraction that will cause surface movement.</li> <li>• After completion of each longwall block.</li> </ul>	<ul style="list-style-type: none"> <li>• Line to be installed and surveyed prior to commencement of mining.</li> </ul>
Line CL26A	z (level and strain distances)	ICSM Class B or LC	<ul style="list-style-type: none"> <li>• Twice prior to longwall extraction that will cause surface movement.</li> <li>• After completion of each longwall block.</li> </ul>	<ul style="list-style-type: none"> <li>• Line to be installed and surveyed prior to commencement of mining.</li> </ul>
Line CL24A	Random x, y, z (LiDAR)	<150mm Vert (1 sigma)	<ul style="list-style-type: none"> <li>• Prior to longwall extraction that will cause surface movement.</li> <li>• After completion of each longwall block.</li> </ul>	<ul style="list-style-type: none"> <li>• Baseline data to be collected prior to commencement of mining.</li> </ul>
Line CL26A	Random x, y, z (LiDAR)	<150mm Vert (1 sigma)	<ul style="list-style-type: none"> <li>• Prior to longwall extraction that will cause surface movement.</li> <li>• After completion of each longwall block.</li> </ul>	<ul style="list-style-type: none"> <li>• Baseline data to be collected prior to commencement of mining.</li> </ul>



## 4 MONITORING OF ENVIRONMENTAL CONSEQUENCES

The various monitoring programs presented in each of the management plans under the Extraction Plan are summarised in **Table 2** and the location of environmental monitoring sites included in WCPL's various environmental monitoring programs are presented in **Figures 1** and **2**.

**Figure 1** presents the location of surface water and groundwater monitoring sites.

**Figure 2** presents the location of biodiversity monitoring sites. As described in **Table 2**, visual observation of the Wollemi National Park escarpment will be undertaken as part of the subsidence monitoring program.

Details of any subsidence impacts observed will be recorded in the Subsidence Impact Register with visual observations documented in the Subsidence Impact Register Assessment Form as provided in **Attachment 2**. Visual inspections will be undertaken in accordance with the inspection checklist provided in **Attachment 2**.

The Subsidence Impact Register will be maintained as an electronic spread sheet on-site, with hard copies of assessment forms filed in a folder.

**Table 2**  
**Longwalls 24 to 26 Monitoring Program Summary**

Management Plan	Monitoring Component	Parameter	Frequency
Water Management Plan	Monitoring of surface water quality and flow monitoring sites (SW04, SW27a, SW39, US FM1, FM1, FM2, FM3), including at additional surface water quality monitoring site SW54.	<ul style="list-style-type: none"> <li>Monitoring of surface water flow and quality along Waterfall Creek, North Wambo Creek, North Wambo Creek Diversion, Stony Creek and Wollombi Brook in accordance with the SWMP.</li> </ul>	<ul style="list-style-type: none"> <li>In accordance with the SWMP.</li> </ul>
	Monitoring of groundwater sites (GW16, GW17, N3, N5, P317, UG139, GW23 to GW26, GW30 to GW36 [a, b], SBX_GW02a).	<ul style="list-style-type: none"> <li>In accordance with the GWMP and WMonP.</li> </ul>	<ul style="list-style-type: none"> <li>In accordance with the GWMP and WMonP.</li> </ul>
	Monitoring at additional groundwater VWP sites along the northern and western ends of LW24-26 (DDH1240, DDH1235, DDH1234), and four new standpipe monitoring bores adjacent to Waterfall Creek (monitoring sites GW40 [a, b] and GW41 [a, b], installed in October 2023.	<ul style="list-style-type: none"> <li>Groundwater pressure at VWP sites</li> <li>In accordance with the GWMP and WMonP at the four new standpipe monitoring bores adjacent to Waterfall Creek.</li> </ul>	<ul style="list-style-type: none"> <li>VWP sites downloaded quarterly</li> <li>Standpipe monitoring site in accordance with the GWMP and WMonP.</li> </ul>
	Inflows to underground workings.	<ul style="list-style-type: none"> <li>Dewatering volumes and underground water levels in accordance with the GWMP.</li> </ul>	<ul style="list-style-type: none"> <li>In accordance with the GWMP.</li> </ul>
	Diversion and subsidence monitoring program, including seven additional sites (U1A, U2A, U3A, U4A, W1, W2 and W3).	<ul style="list-style-type: none"> <li>As outlined in the SWMP, including: monitoring of Index of Diversion Condition; LFA; riparian vegetation; aerial photography; long and cross-section surveys (extracted from LiDAR); and geomorphic condition and efficacy of subsidence management or rehabilitation works.</li> </ul>	<ul style="list-style-type: none"> <li>In accordance with the SWMP.</li> </ul>
	Visual inspection of the North Wambo Creek and Waterfall Creek.	<ul style="list-style-type: none"> <li>Inspections for surface cracking and/or surface ponding.</li> </ul>	<ul style="list-style-type: none"> <li>Weekly inspections when extraction is occurring within 100 m of North Wambo Creek and Waterfall Creek.</li> </ul>
	Visual inspection of drainage line flow paths.	<ul style="list-style-type: none"> <li>Evidence of erosion or channelisation.</li> </ul>	<ul style="list-style-type: none"> <li>Following a rainfall event of greater than 40 mm in 24 hours.<sup>1</sup></li> </ul>

**Table 2 (Continued)**  
**Longwalls 24 to 26 Monitoring Program Summary**

Management Plan	Monitoring Component	Parameter	Frequency
Land Management Plan	Fences.	<ul style="list-style-type: none"> <li>Visual observation to record the condition of fences.</li> </ul>	<ul style="list-style-type: none"> <li>Prior to secondary extraction of Longwalls 24 to 26.</li> <li>Prior to secondary extraction within 100 m of any active WCPL fences (i.e. fences being used to hold stock or prevent public access) and undertaken at 50 m intervals until the active mining face is 100 m past the WCPL fence.</li> <li>Following completion of secondary extraction of Longwalls 24 to 26.</li> </ul>
	Ground surface.	<ul style="list-style-type: none"> <li>Visual observations to record the initial condition of the ground surface.</li> <li>Visual observations of the ground surface behind the longwall face to identify potential surface cracks.</li> </ul>	<ul style="list-style-type: none"> <li>Prior to secondary extraction of Longwalls 24 to 26.</li> <li>Monthly inspections during secondary extraction of Longwalls 24 to 26, increased to weekly inspections when extraction is within 100 m of the North Wambo Creek and Waterfall Creek.</li> </ul>
	Cliffs <sup>2</sup> .	<ul style="list-style-type: none"> <li>Visual observations of cliffs<sup>2</sup> for signs of recent rock fall and/or instability (high definition video/photos recorded via an unmanned aerial vehicle [UAV]).</li> </ul>	<ul style="list-style-type: none"> <li>Prior to, and following completion of, secondary extraction of each of Longwalls 24 to 26.</li> </ul>
	Low lying areas.	<ul style="list-style-type: none"> <li>Visual observations of low lying areas to identify potential surface ponding.</li> </ul>	<ul style="list-style-type: none"> <li>Following a significant rainfall event (i.e. 40 mm within 24 hours).<sup>1</sup></li> </ul>
	Surface areas which required remediation.	<ul style="list-style-type: none"> <li>Visual observations of the ground surface to identify stabilisation of erosion and groundcover.</li> </ul>	<ul style="list-style-type: none"> <li>Monthly inspections until stabilisation of erosion and groundcover is &gt;60%.</li> </ul>
	Steep slopes.	<ul style="list-style-type: none"> <li>Visual observations of steep slopes for signs of instability (high definition video/photos recorded via UAV).</li> </ul>	<ul style="list-style-type: none"> <li>Monthly during secondary extraction of Longwalls 25 and 26.</li> <li>Following completion of secondary extraction of Longwalls 25 and 26.</li> </ul>

**Table 2 (Continued)**  
**Longwalls 24 to 26 Monitoring Program Summary**

Management Plan	Monitoring Component	Parameter	Frequency
Biodiversity Management Plan	General monitoring of flora, fauna and aquatic ecosystems (including groundwater dependent ecosystems).	<ul style="list-style-type: none"> <li>Monitoring in accordance with the BMP.</li> </ul>	<ul style="list-style-type: none"> <li>In accordance with the BMP.</li> </ul>
	Subsidence impacts to Wollemi National Park escarpment.	<ul style="list-style-type: none"> <li>Visual observations of the Wollemi National Park escarpment for signs of recent rock fall and/or instability (high definition video/photos recorded via an UAV).</li> </ul>	<ul style="list-style-type: none"> <li>Prior to secondary extraction of Longwalls 24 to 26 and following completion of each longwall in accordance with the LMP.</li> </ul>
Heritage Management Plan	Artefact scatters.	<ul style="list-style-type: none"> <li>Significant surface cracks and/or erosion in the vicinity of artefact scatters or isolated finds.</li> </ul>	<ul style="list-style-type: none"> <li>In accordance with the HMP (prior to secondary extraction of Longwalls 24 to 26 and monthly during extraction of longwall panels in immediate proximity to a site).</li> </ul>
Built Features Management Plan – WCPL Asset Management Plan	All built features.	<ul style="list-style-type: none"> <li>Visual observations to record the general condition of WCPL assets including safety and serviceability.</li> </ul>	<ul style="list-style-type: none"> <li>Prior to secondary extraction within 1,000 m of WCPL assets.</li> <li>Monthly inspection during secondary extraction of Longwalls 24 to 26 when 100 m from to 100 m past each asset and at end of each longwall.</li> </ul>
	Active service lines. <sup>5</sup>	<ul style="list-style-type: none"> <li>Visual observations to record the general condition of WCPL active service lines including safety and serviceability.</li> </ul>	<ul style="list-style-type: none"> <li>Weekly inspections.</li> </ul>
		<ul style="list-style-type: none"> <li>Monitoring of pipeline integrity at fixed points.</li> </ul>	<ul style="list-style-type: none"> <li>Daily inspections commencing when secondary extraction is within 100 m of WCPL pipelines and undertaken until the active mining face is 100 m past the pipeline.</li> </ul>
		<ul style="list-style-type: none"> <li>Monitoring to detect abnormal changes in flow.</li> </ul>	<ul style="list-style-type: none"> <li>Continuous (SCADA) monitoring of pump and pipeline conditions.</li> </ul>

**Table 2 (Continued)**  
**Longwalls 24 to 26 Monitoring Program Summary**

Management Plan	Monitoring Component	Parameter	Frequency
Built Features Management Plan – WCPL Asset Management Plan (Cont.)	Groundwater monitoring bores.	<ul style="list-style-type: none"> <li>Integrity of groundwater monitoring bores by reviewing groundwater monitoring data.</li> </ul>	<ul style="list-style-type: none"> <li>Once the active mining face is 100 m past the bore.</li> </ul>
	Culverts.	<ul style="list-style-type: none"> <li>Visual observations to record cracking of concrete culverts or grade reversal.</li> </ul>	<ul style="list-style-type: none"> <li>Prior to secondary extraction within 100 m of culverts and undertaken at 50 m intervals until the active mining face is 100 m past the culverts.</li> </ul>
	Roads and tracks.	<ul style="list-style-type: none"> <li>Visual observations to record condition of roads and tracks, including surface cracks, buckling and general safety.</li> </ul>	<ul style="list-style-type: none"> <li>Prior to secondary extraction within 100 m of any WCPL asset and undertaken at 50 m intervals until the active mining face is 100 m past the WCPL asset.</li> </ul>
	Farm buildings, sheds, tanks.	<ul style="list-style-type: none"> <li>Structural assessment.</li> </ul>	<ul style="list-style-type: none"> <li>Following completion of active mining.</li> </ul>
Public Safety Management Plan	Fences.	<ul style="list-style-type: none"> <li>Visual observation to record the condition of fences.</li> </ul>	<ul style="list-style-type: none"> <li>Prior to secondary extraction of each longwall.</li> <li>Prior to secondary extraction within 100 m of any active WCPL fences (i.e. fences being used to hold stock or prevent public access) and undertaken at 50 m intervals until the active mining face is 100 m past the WCPL fence.</li> <li>Following completion of secondary extraction of Longwalls 24 to 26.</li> </ul>
	Warning signs.	<ul style="list-style-type: none"> <li>Visual observation to record the initial condition of existing warning signs (e.g. legibility).</li> <li>Visual observations to record the condition of warning signs (e.g. legibility) during extraction of Longwalls 24 to 26.</li> </ul>	<ul style="list-style-type: none"> <li>Prior to secondary extraction of each longwall.</li> <li>Monthly inspections during secondary extraction of Longwalls 24 to 26.</li> </ul>

**Table 2 (Continued)**  
**Longwalls 24 to 26 Monitoring Program Summary**

Management Plan	Monitoring Component	Parameter	Frequency
Rehabilitation Management Plan (RMP)	Remediated subsidence areas.	<ul style="list-style-type: none"> <li>Visual monitoring to identify any requirement for maintenance measures and/or remedial works.</li> </ul>	<ul style="list-style-type: none"> <li>Monthly inspections until monitoring confirms stabilisations of erosion and groundcover is &gt;60%.</li> </ul>
	Installed sediment control structures.	<ul style="list-style-type: none"> <li>Inspection of capacity, structural integrity and effectiveness in accordance with the ESCP.</li> </ul>	<ul style="list-style-type: none"> <li>Monthly and/or following a significant rainfall event (i.e. 20 mm within 24 hours, midnight to midnight).</li> </ul>

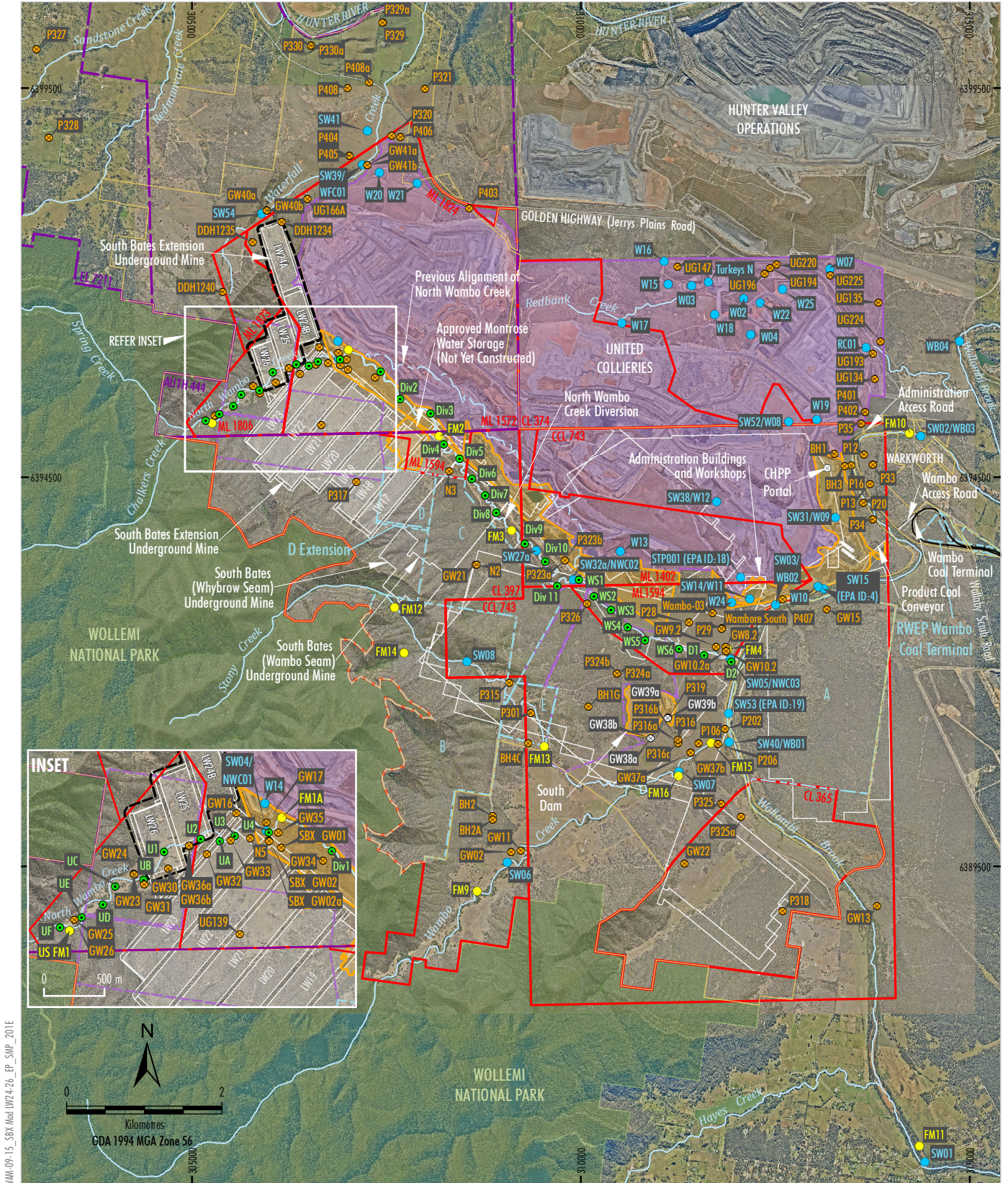
<sup>1</sup> Inspection to occur once access is practicably available following the rainfall event. Inspections will not occur for subsequent rainfall events within 7 days of previous inspection.

<sup>2</sup> Cliffs include: the low level cliffs, intermediate level cliffs and cliffs associated with the Wollemi National Park escarpment. There are no cliffs identified above or adjacent to Longwalls 24 to 26, however there are cliffs located approximately 760 m west of Longwall 26 within the Wollemi National Park escarpment.

<sup>3</sup> Where sufficient data for a baseline record has not already been obtained by WCPL.

<sup>4</sup> If no change is detected then this will be documented. If any adverse changes that threaten the stability of the tree are identified, then appropriate stabilisation works and/or salvage will be considered and undertaken as required.

<sup>5</sup> Active service lines include all services required for mining at the Wambo Coal Mine (electricity supply, telecommunications, water supply and mine dewatering).



WAM-09-15\_SBX\_Moat\_UW24-26\_EP\_SMP\_201E

Source: WCPL (2024); MSEC (2024); NSW Spatial Services (2024)  
Orthophoto Mosaic: WCPL (Nov 2023-May 2022)

- LEGEND**
- National Park
  - SSD 7142 Operational Area #
  - Biodiversity Stewardship Site under SSD 7142
  - WCPL Owned Land
  - Wambo Coal Mine
  - Exploration Licence Boundary (AUTH, EL)
  - Mining and Coal Lease Boundary (ML, CL, CCL)
  - Remnant Woodland Enhancement Program (RWEPP) Area
  - Existing/Approved Wambo Coal Mine Surface Development Area
  - Existing/Approved Underground Development
  - Extraction Plan Application Area

- Monitoring Sites**
- Groundwater Monitoring Sites
  - Proposed Groundwater Monitoring Sites
  - Surface Water Flow Monitoring Site
  - Surface Water Quality Monitoring Site
  - Diversion and Subsidence Monitoring Site

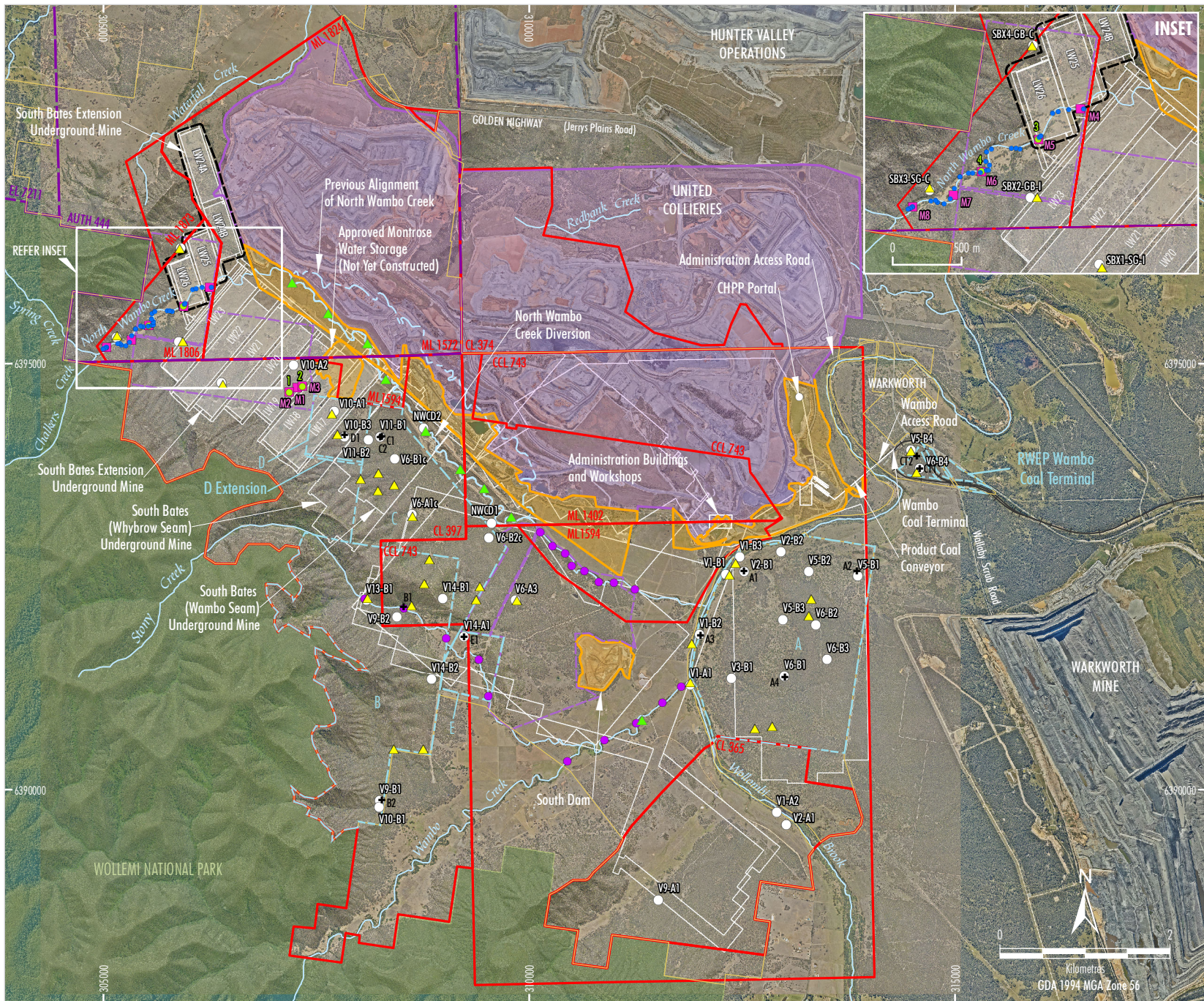
# Under Phase 2 of mining at Wambo Coal Mine (commenced 1 December 2020), this area is operated by United Collieries Pty Ltd under the United Wambo Joint Venture Project.

**Peabody**

W A M B O C O A L M I N E

Location of Surface Water and Groundwater Monitoring Sites

**Figure 1**



- LEGEND**
- National Park
  - SSD 7142 Operational Area #
  - Biodiversity Stewardship Site under SSD 7142
  - WCPL Owned Land
  - Wambo Coal Mine
  - Exploration Licence Boundary (AUTH, EL)
  - Mining and Coal Lease Boundary (ML, CL, CCL)
  - Remnant Woodland Enhancement Program (RWEP) Area
  - Existing/Approved Wambo Coal Mine Surface Development Area
  - Existing/Approved Underground Development
  - Extraction Plan Application Area
  - Bird Monitoring Site
  - Riparian Monitoring Cross-section
  - LFA Monitoring Location - Riparian
  - Flora Monitoring Plot
  - GDE Monitoring Plot
  - GDE Monitoring Photo Plot
  - GDE Tree
  - Photo Monitoring Point

# Under Phase 2 of mining at Wambo Coal Mine (commenced 1 December 2020), this area is operated by United Collieries Pty Ltd under the United Wambo Joint Venture Project.

Source: WCPL (2024); MSEC (2020, 2023); NSW Spatial Services (2024) Orthophoto: WCPL (Nov 2024-May 2022)

**Peabody**  
 W A M B O C O A L M I N E  
 Location of Relevant  
 Biodiversity Monitoring Sites



**Figure 2**



## 5 ROLES AND RESPONSIBILITIES

Key responsibilities of WCPL personnel in relation to this SMP are summarised in **Table 3**. Responsibilities may be delegated as required.

**Table 3**  
**Subsidence Monitoring Program Responsibilities Summary**

Responsibility	Task
<b>General Manager</b>	<ul style="list-style-type: none"> <li>Ensure resources are available to WCPL personnel to facilitate the completion of responsibilities under this SMP.</li> </ul>
<b>Mining Engineering Manager (Underground Mine Manager)</b>	<ul style="list-style-type: none"> <li>Ensure this SMP is implemented.</li> </ul>
<b>Technical Services Superintendent</b>	<ul style="list-style-type: none"> <li>Ensure monitoring and reporting required in accordance with this SMP is carried out within specified timeframes, are adequately checked and processed and are prepared to the required standard.</li> </ul>
<b>Manager, Environment and Community</b>	<ul style="list-style-type: none"> <li>Undertake environmental monitoring required in accordance with the Extraction Plan and ensure the Subsidence Impact Register is kept up to date and hard copies of the assessment forms are filed / stored correctly.</li> <li>Become familiarised with environmental aspects which require monitoring in accordance with the Extraction Plan.</li> </ul>
<b>Mine Surveyor</b>	<ul style="list-style-type: none"> <li>Undertake all monitoring in accordance with this SMP to the required standard within the specified timeframes and ensure data are adequately checked, processed and recorded.</li> </ul>

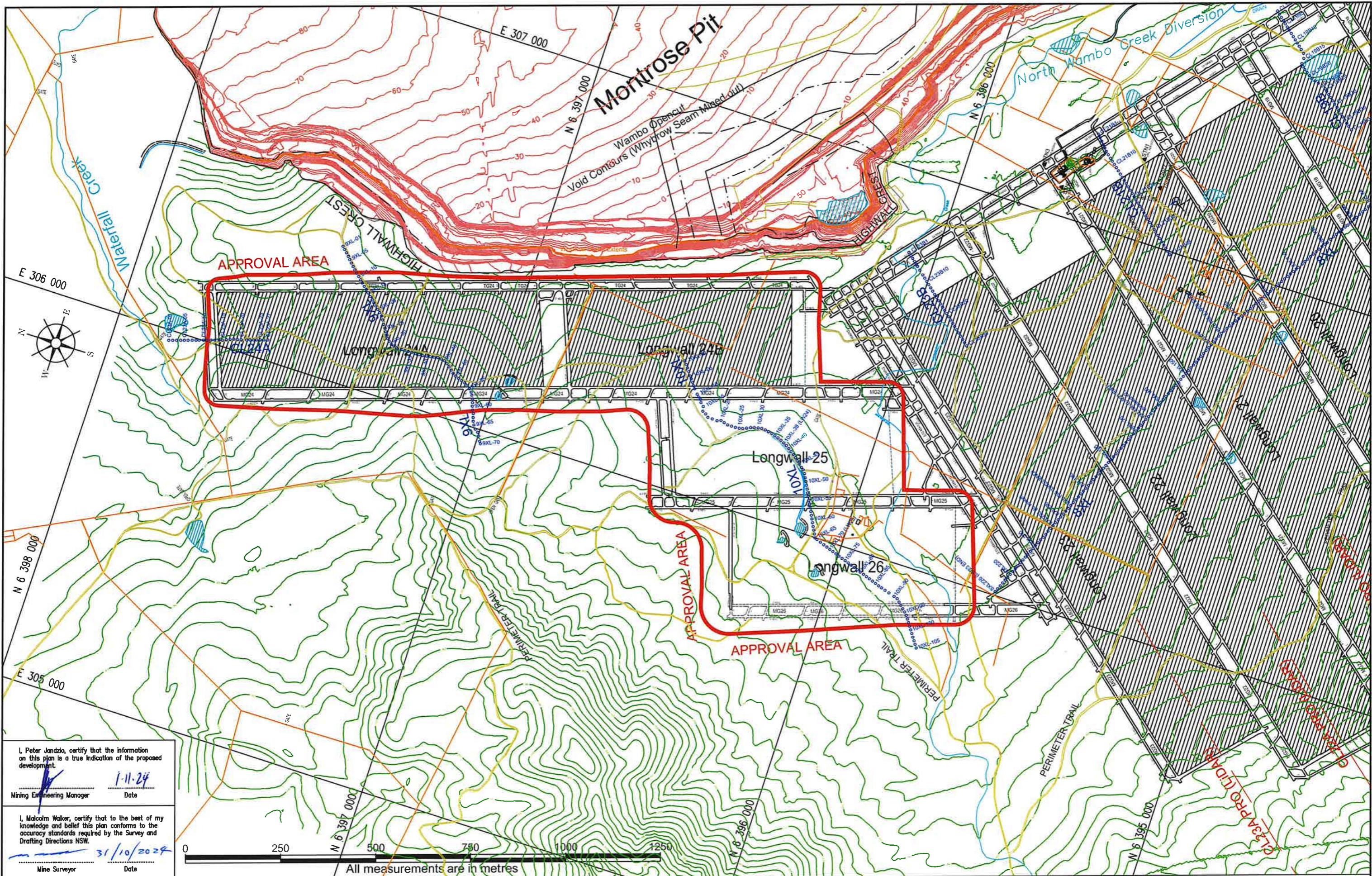
## 6 REFERENCES

Department of Planning and Environment (2022) *Extraction Plan Guideline*.

Wambo Coal Pty Limited (2003) *Wambo Development Project Environmental Impact Statement*.

Wambo Coal Pty Limited (2022) *Longwalls 24 to 26 Modification Report*.

ATTACHMENT 1  
EXISTING AND PROPOSED SUBSIDENCE MONITORING LINES



I, Peter Jandzio, certify that the information on this plan is a true indication of the proposed development.  
 Mining Engineering Manager Date 1-11-24

I, Malcolm Walker, certify that to the best of my knowledge and belief this plan conforms to the accuracy standards required by the Survey and Drafting Directions NSW.  
 Mine Surveyor Date 31/10/2024



- Longwall Extraction Approval Area (based on 26.5° angle of draw)
- South Bates Extension Underground Proposed Workings (Whybrow Seam)
- South Bates Extension Underground Existing Workings (Whybrow Seam)
- Opencut Whybrow Seam Mined Extents
- Depth of Cover Contours
- Wambo Opencut Void 5m Contours (AHD)
- Proposed Subsidence Monitoring Lines for South Bates Underground LW24-26 (alignments may vary slightly due to terrain, safety & Enviro restrictions)
- Existing Subsidence Monitoring Marks for South Bates Underground
- Fences

REV.	DATE	BY	DESCRIPTION	CHK.	REV.	DATE	BY	DESCRIPTION	CHK.
A	19/5/2023	MW	For Longwall 24 to 26 Submission	ND					
B	30/06/2024	MW	Mine plan reduction due to Dykes and 10m Fault	PJ					
C	29/10/2024	MW	Amended Mine plan for LW26	ND					

**Peabody** WAMBO COAL PTY LIMITED  
 ABN 13 000 668 057  
 Jerry's Plains Rd, Warkworth Phone: 02 65 702200  
 Via Singleton, NSW, 2330 Fax: 02 65 702290  
 Prepared by NWU Survey Ph: 02 65 702318

**South Bates Extension Underground Mine (Whybrow Seam)  
 Extraction Plan - Longwalls 24-26 (Revision C)  
 Plan 7 - Proposed and Existing Subsidence Monitoring**

Date: 15/05/2023 Scale: 1:5000 Drawn: MJW Checked: PJ Approved: PJ

Drawing No: 2989  
 Revision No: C\_29/10/2024  
 Sheet Size: AO

ATTACHMENT 2  
SUBSIDENCE IMPACT REGISTER

**Table A2-1  
Example Subsidence Impact Register (Electronic Version Maintained On-Site)**

Impact Register Number <sup>1</sup>	Impact Description	Does Impact Exceed the Performance Measure/Indicators? (Yes/No/Not Applicable)	Management Measures Implemented	Were Management Measures Effective? (Yes/No)

Notes:

1: Fill out all details in the Assessment Form and record the register number here.

SUBSIDENCE IMPACT REGISTER ASSESSMENT FORM		
<b>Date and Time</b>		
<b>Observer (Name and position)</b>		
<b>Register Number (i.e. Number 1, 2, etc.)</b>		
<b>Longwall Number</b>		
<b>Longwall Chainage</b>		
<b>Area Inspected</b> <small>Examples: location of crack, include GPS co-ordinates and a sketch</small>		
INSPECTION ITEM	CHECKED	COMMENTS <small>(Examples: nature and extent of impact, any relevant information, attach photographs)</small>
<b>Surface Cracking</b>		
<b>Surface Humps (compression)</b>		
<b>Surface Ponding</b>		
<b>Access Tracks/Serviceability of built features</b>		
<b>Warning Signage</b>		
<b>Powerline – poles, insulators, conductors, conductor clearance</b>		
<b>Other</b>		
Actions Required		
<b>Management or Contingency Measures Implemented</b>		
<b>Effectiveness of Management or Contingency Measures</b>		
WCPL Key Personnel Notified (include date of email)		
Technical Services Manager	<input type="checkbox"/>	_ / _ / _ _
Environment and Community Manager	<input type="checkbox"/>	_ / _ / _ _

## SUBSIDENCE INSPECTION CHECKLIST

### WHERE TO INSPECT

- 500 metres behind and 100 metres in front of the current longwall face position.

### EXTENT OF INSPECTION

- Include the area of active subsidence based on the 26.5 degree angle of draw.

### WHAT TO LOOK FOR

- **Surface Cracking:** inspect edges of extraction void and travelling abutments.
- **Surface Humps:** inspect near centre of extracted panels and travelling abutment.
- **Surface Ponding:** inspect low lying areas for evidence of increased/new ponding.
- **Access Tracks:** inspect for step change in land surface and changes in access for serviceability.
- **Warning Signage:** inspect condition and legibility of relevant warning signage.
- **Powerlines:** inspect for changes of conductor clearance and power pole condition.
- Check the serviceability of built features (e.g. fences, buildings, dams and access tracks).
- Note any flooding hazards for access tracks.
- Carry out any inspections required in accordance with the Built Features Management Plan for Longwalls 24 to 26.

### ACTIONS IF AN IMPACT IS IDENTIFIED

1. Employ additional subsidence warning signs if necessary.
2. Notify Key Personnel (including asset owner if relevant [e.g. if asset is not a WCPL-owned asset]).
3. Assess impact against requirements of the relevant TARP and implement actions as required.
4. Record implemented actions in the Subsidence Impact Register Assessment Form.
5. Notify the Principal Subsidence Engineer, if impacts greater than predicted are identified (NSW Resources Regulator).
6. Notify other stakeholders as required (e.g. DPE, NSW Resources Regulator etc.).