

**Introduction**

The *Protection of the Environment Operations Act 1997* (POEO Act) requires that holders of an environment protection licence make their pollution monitoring data publicly available within 14 days of receipt. The NSW EPA Public Register can be found at: [www.epa.nsw.gov.au/licensing-and-regulation/public-registers](http://www.epa.nsw.gov.au/licensing-and-regulation/public-registers)

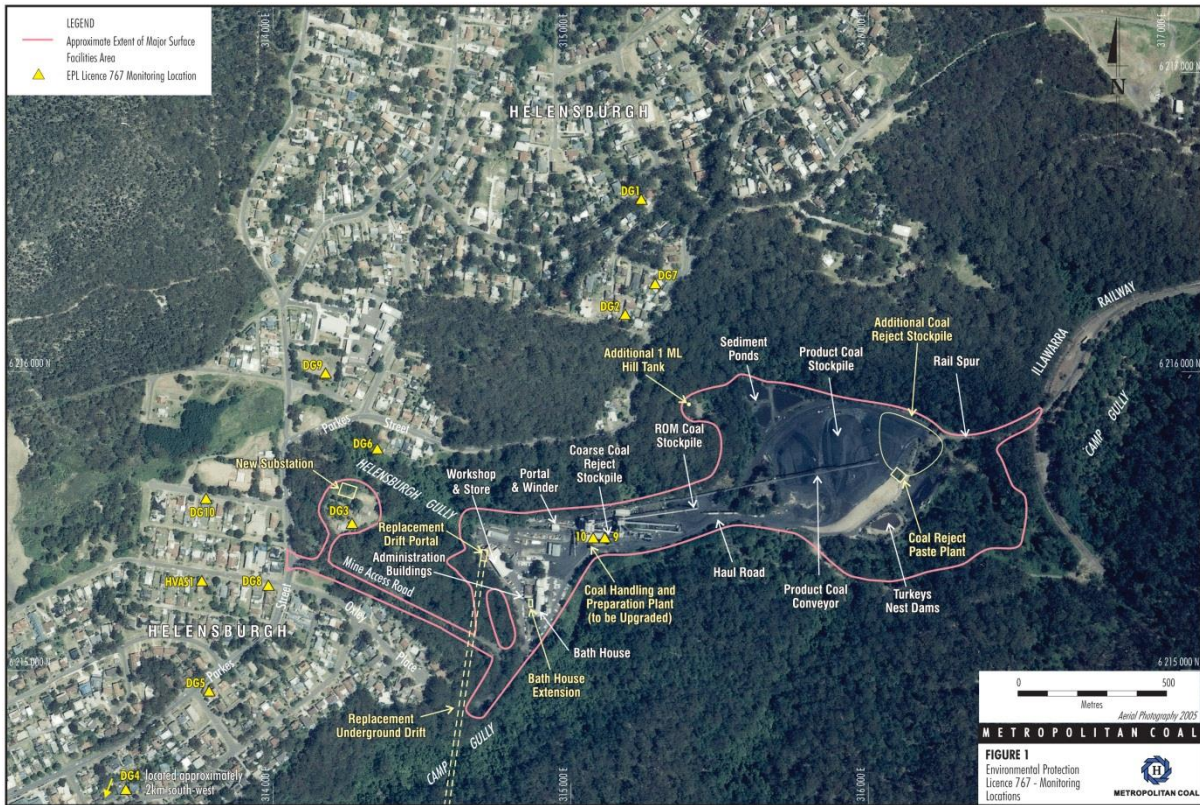
Metropolitan Coal is holder of Environmental Protection Licence 767 (EPL 767). This licence pertains to ‘Mining for Coal’ and ‘Coal Works’. EPL 767 identifies a number of monitoring points as shown in **Table 1 and Figure 1**. Metropolitan Coal is located Off Parkes Street Helensburgh, NSW, 2508.

**Table 1 – EPL 767 Monitoring Points, Parameters and Frequency**

Monitoring Point Number	Name	Parameter	Frequency
1	Dust Gauge at 136 The Crescent	Ash / Combustible Solids / Insoluble Solids	Monthly
2	Dust Gauge at 28 Old Station Road	Ash / Combustible Solids / Insoluble Solids	Monthly
3	Dust Gauge at The Mine Entrance	Ash / Combustible Solids / Insoluble Solids	Monthly
4	Dust Gauge at Helensburgh Golf Course	Ash / Combustible Solids / Insoluble Solids	Monthly
5	Dust Gauge at 83 Parkes Street	Ash / Combustible Solids / Insoluble Solids	Monthly
9*	Clean Water Tank at Water Treatment Plant	Oil and Grease / pH / TSS	Monthly
10	Flowmeter on from Water Treatment Plant to Camp Creek	Kilolitres Per Day	Daily (continuous)
11	Dust Gauge at 59 Parkes Street	Ash / Combustible Solids / Insoluble Solids	Monthly
12	Dust Gauge at 32 Old Station Road	Ash / Combustible Solids / Insoluble Solids	Monthly
13	Dust Gauge at 88 Parkes Street	Ash / Combustible Solids / Insoluble Solids	Monthly
14	Dust Gauge at Helensburgh Public School	Ash / Combustible Solids / Insoluble Solids	Monthly
15	Dust Gauge at Holy Cross Primary School	Ash / Combustible Solids / Insoluble Solids	Monthly
16	High Volume Air Sampler at 12 Robertson Street	Micrograms Per Cubic Metre	Every 6 days

*\*Note: The monitoring at Point 9 required by condition M2 is conducted by the licensee to determine compliance with the limits specified for Point 7 in condition L3.3*

**Figure 1 – EPL 767 Monitoring Point Locations**



This environmental monitoring summary is provided in accordance with the requirements of the POEA Act. It is distinct to the environmental monitoring summary which is provided in accordance with the requirements of Project Approval 08\_0149 which was granted under Section 75J of the NSW Environmental Planning and Assessment Act, 1979 on 22 June 2009.

**Monitoring Summary**

<b>Monitoring Point 1 – Dust Gauge at 136 The Crescent</b>			
<b>Month</b>	<b>Insoluble Solids (g/m<sup>2</sup>/month)</b>	<b>Ash (g/m<sup>2</sup>/month)</b>	<b>Combustible Solids (g/m<sup>2</sup>/month)</b>
Jan-24	0.6	0.2	0.4
Feb-24	0.8	0.3	0.5
Mar-24	0.7	0.3	0.4
Apr-24	1.0	0.2	0.8
May-24	0.2	<0.1	0.2
Jun-24	0.1	<0.1	0.1
Jul-24	0.3	0.1	0.2
Aug-24	0.3	0.3	<0.1
Sep-24	0.9	0.3	0.6
Oct-24	0.8	0.3	0.5
Nov-24	1.9	0.6	1.3
Dec-24			

**METROPOLITAN COAL – ENVIRONMENTAL PROTECTION LICENCE MONITORING SUMMARY**

<b>Monitoring Point 2 – Dust Gauge at 28 Old Station Road</b>			
<b>Month</b>	<b>Insoluble Solids (g/m<sup>2</sup>/month)</b>	<b>Ash (g/m<sup>2</sup>/month)</b>	<b>Combustible Solids (g/m<sup>2</sup>/month)</b>
Jan-24	0.6	0.2	0.4
Feb-24	0.4	0.1	0.3
Mar-24	0.2	0.2	<0.1
Apr-24	0.4	0.1	0.3
May-24	1.0	0.5	0.5
Jun-24	0.2	0.2	<0.1
Jul-24	0.2	0.1	0.1
Aug-24	0.2	0.1	0.1
Sep-24	0.8	<0.1	0.8
Oct-24	0.4	0.2	0.2
Nov-24	0.8	0.3	0.5
Dec-24			

<b>Monitoring Point 3 – Dust Gauge at Mine Entrance</b>			
<b>Month</b>	<b>Insoluble Solids (g/m<sup>2</sup>/month)</b>	<b>Ash (g/m<sup>2</sup>/month)</b>	<b>Combustible Solids (g/m<sup>2</sup>/month)</b>
Jan-24	0.2	0.1	0.1
Feb-24	0.7	0.2	0.5
Mar-24	0.4	0.1	0.3
Apr-24	0.1	<0.1	0.1
May-24	0.5	0.2	0.3
Jun-24	0.5	0.2	0.3
Jul-24	0.4	0.2	0.2
Aug-24	0.9	0.4	0.5
Sep-24	1.2	0.3	0.9
Oct-24	0.6	0.2	0.4
Nov-24	1.2	0.4	0.8
Dec-24			

<b>Monitoring Point 4 – Dust Gauge at Helensburgh Golf Course</b>			
<b>Month</b>	<b>Insoluble Solids (g/m<sup>2</sup>/month)</b>	<b>Ash (g/m<sup>2</sup>/month)</b>	<b>Combustible Solids (g/m<sup>2</sup>/month)</b>
Jan-24	0.6	0.4	0.2
Feb-24	2.9	1.7	1.2
Mar-24	1.0	0.4	0.6
Apr-24	0.4	0.2	0.2
May-24	0.6	0.4	0.2
Jun-24	0.8	0.5	0.3
Jul-24	0.6	0.4	0.2
Aug-24	0.9	0.6	0.3
Sep-24	1.0	0.7	0.3
Oct-24	0.2	0.2	<0.1
Nov-24	0.7	0.6	0.1
Dec-24			

<b>Monitoring Point 5 – Dust Gauge at 83 Parkes Street</b>			
<b>Month</b>	<b>Insoluble Solids (g/m<sup>2</sup>/month)</b>	<b>Ash (g/m<sup>2</sup>/month)</b>	<b>Combustible Solids (g/m<sup>2</sup>/month)</b>
Jan-24	0.3	0.2	0.1
Feb-24	0.4	0.2	0.2
Mar-24	0.4	0.1	0.3
Apr-24	0.2	0.1	0.1
May-24	0.1	0.1	<0.1
Jun-24	0.2	0.1	0.1
Jul-24	0.2	0.1	0.1
Aug-24	0.2	0.2	<0.1
Sep-24	0.9	0.6	0.3
Oct-24	0.2	0.2	<0.1
Nov-24	0.4	0.3	0.1
Dec-24			

**METROPOLITAN COAL – ENVIRONMENTAL PROTECTION LICENCE MONITORING SUMMARY**

<b>Monitoring Point 11 – Dust Gauge at 59 Parkes Street</b>			
<b>Month</b>	<b>Insoluble Solids (g/m<sup>2</sup>/month)</b>	<b>Ash (g/m<sup>2</sup>/month)</b>	<b>Combustible Solids (g/m<sup>2</sup>/month)</b>
Jan-24	0.3	0.1	0.2
Feb-24	0.6	0.2	0.4
Mar-24	0.7	0.1	0.6
Apr-24	0.2	0.1	0.1
May-24	0.2	0.1	0.1
Jun-24	0.2	<0.1	0.2
Jul-24	0.1	0.1	<0.1
Aug-24	0.2	0.1	0.1
Sep-24	0.4	0.1	0.3
Oct-24	0.3	0.1	0.2
Nov-24	0.6	0.2	0.4
Dec-24			

<b>Monitoring Point 12 – Dust Gauge at 32 Old Station Road</b>			
<b>Month</b>	<b>Insoluble Solids (g/m<sup>2</sup>/month)</b>	<b>Ash (g/m<sup>2</sup>/month)</b>	<b>Combustible Solids (g/m<sup>2</sup>/month)</b>
Jan-24	0.8	0.3	0.5
Feb-24	1.1	0.3	0.8
Mar-24	0.9	0.2	0.7
Apr-24	0.6	0.2	0.4
May-24	0.6	0.2	0.4
Jun-24	0.6	0.1	0.5
Jul-24	0.2	0.1	0.1
Aug-24	0.5	0.1	0.4
Sep-24	1.0	0.2	0.8
Oct-24	0.5	0.3	0.2
Nov-24	1.2	0.4	0.8
Dec-24			

**METROPOLITAN COAL – ENVIRONMENTAL PROTECTION LICENCE MONITORING SUMMARY**

<b>Monitoring Point 13 – Dust Gauge at 88 Parkes Street</b>			
<b>Month</b>	<b>Insoluble Solids (g/m<sup>2</sup>/month)</b>	<b>Ash (g/m<sup>2</sup>/month)</b>	<b>Combustible Solids (g/m<sup>2</sup>/month)</b>
Jan-24	0.5	0.2	0.3
Feb-24	0.9	0.5	0.4
Mar-24	1.1	0.4	0.7
Apr-24	0.7	0.3	0.4
May-24	0.7	0.5	0.2
Jun-24	0.5	0.3	0.2
Jul-24	0.5	0.3	0.2
Aug-24	0.6	0.3	0.3
Sep-24	0.6	0.3	0.3
Oct-24	0.6	0.4	0.2
Nov-24			
Dec-24			

<b>Monitoring Point 14 – Dust Gauge at Helensburgh Public School</b>			
<b>Month</b>	<b>Insoluble Solids (g/m<sup>2</sup>/month)</b>	<b>Ash (g/m<sup>2</sup>/month)</b>	<b>Combustible Solids (g/m<sup>2</sup>/month)</b>
Jan-24	0.4	0.2	0.2
Feb-24	0.3	0.2	0.1
Mar-24	0.5	0.1	0.4
Apr-24	0.3	0.1	0.2
May-24	0.4	0.2	0.2
Jun-24	0.2	0.1	0.1
Jul-24	0.2	0.1	0.1
Aug-24	0.4	<0.1	0.4
Sep-24	0.8	0.3	0.5
Oct-24	0.3	0.2	0.1
Nov-24	0.5	0.3	0.2
Dec-24			

<b>Monitoring Point 15 – Dust Gauge at Holy Cross Primary School</b>			
<b>Month</b>	<b>Insoluble Solids (g/m<sup>2</sup>/month)</b>	<b>Ash (g/m<sup>2</sup>/month)</b>	<b>Combustible Solids (g/m<sup>2</sup>/month)</b>
Jan-24	0.6	0.2	0.4
Feb-24	0.8	0.2	0.6
Mar-24	0.7	0.1	0.6
Apr-24	0.6	0.2	0.4
May-24	0.1	0.1	<0.1
Jun-24	0.3	0.1	0.2
Jul-24	0.3	0.2	0.1
Aug-24	0.6	0.3	0.3
Sep-24	1.6	0.4	1.2
Oct-24	0.1	0.1	<0.1
Nov-24	1.1	0.5	0.6
Dec-24			

**METROPOLITAN COAL – ENVIRONMENTAL PROTECTION LICENCE MONITORING SUMMARY**

<b>Monitoring Point 16 – High Volume Air Sampler at 12 Robertson Street</b>			
<b>Date</b>	<b>PM10 (µg/m<sup>3</sup>)</b>	<b>Date</b>	<b>PM10 (µg/m<sup>3</sup>)</b>
06/01/2024	11.4	10/07/2024	3.5
12/01/2024	11.8	16/07/2024	2.0
18/01/2024	11.1	22/07/2024	5.2
24/01/2024	19.4	28/07/2024	2.9
30/01/2024	15.9	03/08/2024	8.6
05/02/2024	25.6	09/08/2024	12.3
11/02/2024	18.8	15/08/2024	8.3
17/02/2024	17.5	21/08/2024	9.9
23/02/2024	23.5	27/08/2024	6.6
29/02/2024	25.3	02/09/2024	19.6
06/03/2024	25.2	08/09/2024	10.3
12/03/2024	22.4	14/09/2024	7.0
18/03/2024	5.0	20/09/2024	9.3
24/03/2024	12.1	26/09/2024	5.0
30/03/2024	14.2	02/10/2024	13.8
05/04/2024	9.0	08/10/2024	9.4
11/04/2024	8.7	14/10/2024	14.2
17/04/2024	10.1	20/10/2024	15.1
23/04/2024	10.5	26/10/2024	9.6
29/04/2024	13.0	01/11/2024	7.4
05/05/2024	2.4	07/11/2024	19.2
11/05/2024	3.4	13/11/2024	8.2
17/05/2024	12.5	19/11/2024	10.2
23/05/2024	8.9	25/11/2024	22.6
29/05/2024	17.3		
04/06/2024	4.5		
10/06/2024	10.7		
16/06/2024	3.8		
22/06/2024	3.2		
28/06/2024	5.2		
04/07/2024	9.1		



**METROPOLITAN COAL – ENVIRONMENTAL PROTECTION LICENCE MONITORING SUMMARY**

**Point 9\* – The Clean Water Tank of the Water Treatment Plant**

	Jan	Feb	Mar	Apr	May	Jun	Jul	Aug	Sep	Oct	Nov	Dec	Limit / Units
<b>Oil &amp; Grease</b>	<5	<5	<5	<5	<5	<5	<5	**	**	<5	**	-	<b>10</b>
<b>pH</b>	8.39	8.31	8.36	8.26	8.21	8.33	8.38	**	**	8.4	**	-	<b>6.5-8.5</b>
<b>TSS</b>	5	<5	11	8	<5	10	20	**	**	11	**	-	<b>30</b>
<b>EC</b>	2280	1360	3560	1020	1730	1910	2720	**	**	3600	**	-	<b>(µS/cm</b>
<b>Turbidity</b>	1.7	1.4	14.8	15.7	5.7	9.1	23.6	**	**	8.0	**	-	<b>NTU</b>
<b>Alkalinity</b>	995	544	1550	435	777	840	1210	**	**	1670	**	-	<b>(mg/L)</b>
<b>Aluminium</b>	0.89	0.63	0.87	0.28	0.13	0.36	0.31	**	**	0.12	**	-	<b>(mg/L)</b>
<b>Antimony</b>	0.02	0.0009	0.016	0.006	0.011	0.012	0.013	**	**	0.007	**	-	<b>(mg/L)</b>
<b>Arsenic</b>	0.005	0.0002	0.009	<0.001	0.003	0.005	0.003	**	**	0.007	**	-	<b>(mg/L)</b>
<b>Bicarbonate</b>	938	505	1430	418	730	797	1160	**	**	1610	**	-	<b>(mg/L)</b>
<b>Chromium</b>	0.001	<0.001	<0.001	<0.001	0.002	0.001	0.002	**	**	<0.001	**	-	<b>(mg/L)</b>
<b>Molybdenum</b>	0.031	0.025	0.034	0.017	0.02	0.023	0.021	**	**	0.058	**	-	<b>(mg/L)</b>
<b>Nickel</b>	0.011	0.004	0.022	0.002	0.008	0.01	0.013	**	**	0.02	**	-	<b>(mg/L)</b>
<b>Nitrogen</b>	0.5	0.2	0.9	0.3	0.5	0.4	0.3	**	**	0.3	**	-	<b>(mg/L)</b>
<b>Nit. Oxides</b>	0.29	0.23	0.47	0.17	0.28	0.29	0.28	**	**	0.43	**	-	<b>(mg/L)</b>
<b>Phosphorus</b>	0.2	0.09	0.27	0.06	0.08	0.06	0.22	**	**	0.15	**	-	<b>(mg/L)</b>
<b>Reactive Ph</b>	0.16	0.08	0.21	0.02	0.06	0.04	0.08	**	**	0.12	**	-	<b>(mg/L)</b>
<b>Vanadium</b>	<0.01	<0.01	<0.01	<0.01	<0.01	<0.01	<0.01	**	**	<0.01	**	-	<b>(mg/L)</b>
<b>Exceedance</b>	<b>N</b>	<b>N</b>	<b>N</b>	<b>N</b>	<b>N</b>	<b>N</b>	<b>N</b>	<b>N</b>	<b>N</b>	<b>N</b>	<b>N</b>		<b>(Y/N)</b>

*\*Note: The monitoring at Point 9 required by condition M2 is conducted by the licensee to determine compliance with the limits specified for Point 7 in condition L3.3. \*\*Note: No discharge to Camp Creek in August, September and November 2024.*

**Point 10 – The Flowmeter on the Clean Water Discharge Tank at the Water Treatment Plant**

Month	Volume (kL Per Day)
Jan-24	197
Feb-24	263
Mar-24	130
Apr-24	220
May-24	448
Jun-24	444
Jul-24	38
Aug-24	0
Sep-24	0
Oct-24	40
Nov-24	0
Dec-24	

